



NEPSE Index – Tuesday



MARKET SUMMARY

NEPSE	1,142.04	+0.45%
Total Turnover (Rs.)	222,452,078	+1.75%
Share Volume	765,897	-8.14%
Total Transactions	2,810	-17.43%
Total Market Cap. (Rs. Mill)	1,451,016.56	+0.46%
Floated Market Cap (Rs. Mill)	524,606.41	+0.45%

MARKET CAP TO GDP RATIO 41.88% ▲

WEIGHTAGE ON MARKET CAP

Commercial Banks	53.36%
Development Bank	5.41%
Finance	2.95%
Microfinance	6.59%
Life Insurance	6.74%
Non-life Insurance	5.09%
Hydropower	6.38%
Hotel	1.65%
Manufacturing And Processing	4.11%
Trading	0.12%
Others	7.60%
NTC	6.55%

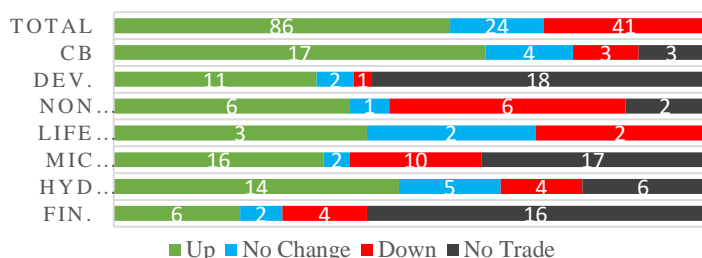
Top Gainers	RMDC, GRDBL, SPDL
Top Losers	CEFL, HPPL, EIC
Top Stocks by Shares Traded	ALICLP, SBL, PRVU
Top Stocks by Transactions	SBL, PRVU, RHPL
Top Stocks by Turnover	SBL, ALICLP, PRVU
Top Brokers by Transactions	43, 34, 58

NEPSE STATISTICS

Average Return	14.82%
Standard Deviation	16.89%
Skewness	0.48
Kurtosis	3.51

Notes: NEPSE Index from 2069.04.01 – 2076.06.28. Avg. annual trade day's 229. Lognormal return is used. Skewness shows market is asymmetrically skewed to right, indicating average return of 14.82% more affected by outliers. Further excess kurtosis shows fat tail and more peaked distribution than normal.

TRADED SCRIPTS STATS



MAJOR MARKET NEWS

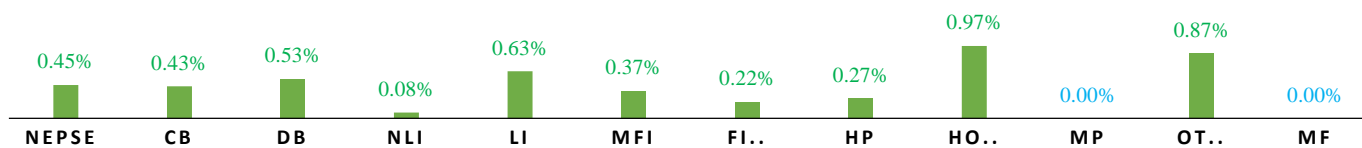
- Market closed by gaining 5.08 points on Tuesday. NEPSE posted a bullish candle after 2 consecutive bearish candles and closed at 1142.04 level.
- Sensitive, Float and Sensitive Float Index all closed green, by gaining 1.05, 0.38 and 0.34 points respectively.
- RMDC is the top gainers which gained by 5.93% whereas CEFL is the top loser which lost by 5.88%.
- SHINE started its joint transaction after acquiring BHBL and PURBL.
- NMBMF is issuing 150% right shares to its shareholders. The book closure for the same is set at 7th Kartik.
- NEPSE adjusted price of OHL for 5% bonus shares at Rs. 453.33
- MBL conducted its 21st AGM on 24th Ashwin. The main agenda of the AGM was to issue 5% bonus shares and 11% cash dividend.
- NLICL is inviting its shareholders to attend 31st AGM on 24th Kartik. The main agenda of the AGM is to issue 2.5% bonus shares and 12% cash dividend.
- EBL propose to distribute 5% bonus shares and 20% cash dividend to its shareholders.
- CDSC implements the WACC for CGT calculation in full fledge.

Today's Events (Wednesday)

- Book Closure Date for the 15.7895% cash dividend of SHIVM.
- Book Closure Date for the 10% bonus shares and 15.26% cash dividend of SBL.
- NFO Alert:** Issue opens of "Sunrise First Mutual Fund" - 100,000,000 units at Rs.10 each.
- Right Shares Alert:** SFFIL is issuing 60% Right
- Right Shares Alert:** SMATA is issuing 200% Right.
- Auction Alert:** GBLBS is auctioning its 299,982 units promoter shares via auction till 4th Kartik.
- Auction Alert:** LICN is auctioning its 50,000 units Promoter Shares
- Auction Alert:** GILB is auctioning its 56,561 units Ordinary Shares
- IPO Alert:** Shiva Shree is issuing 3351140 units IPO shares. Issue extended till 15th Kartik.
- Debentures Alert:** 10% Laxmi Bank Debenture 2086 open for issuance till 22nd Kartik.



INDICES % CHANGE



Volatile Stocks

SABSL	(459)	6.31%
GFCL	(135)	6.11%
API	(116)	5.45%

Stock Movement

SAPDBL	(125)	Lowest till now
RHPC	(77)	Lowest till now

Highest Volume – Day 3 (Week 12)

SBL	(338)	199,258 units
PRVU	(267)	161,657 units
MEGAPO	(104)	112,000 units

Sectorial Outlooks

Bullish

-
-

Bearish

Microfinance
Banking

Stock Pick...

Up Pick

MSMBS
LLBS

Down Pick

TRH
NLG

Financial Metrics

S.N.	Ticker	LTP	EPS	BVPS	P/E	P/B	ROE	NPL	CAR	Remarks
1	SHIVM	508	34.16	194.6	31.85	2.61	20.29%	-	-	-
2	LLBS	683	45.84	201.11	47.93	3.40	25.61%	1.26%	13.31%	-
2	JSLBB	993	73.73	327.01	73.28	3.04	26.99%	2.23%	8.37%	-
3	NIL	369	29.22	195.90	30.62	1.88	16.12%	-	-	-
5	SABSL	4\$59	27.87	128.75	28.42	3.57	27.75%	0.45%	9.76%	13% Bonus Proposal

NEPSE TECHNICAL OUTLOOKS



Date / Time	15.10.2019
Close	1142.04
Open	1138.38
High	1142.05
Low	1135.86
Bollinger Bands Top (20,2,ma,y)	1167.90
Bollinger Bands Median (20,2,ma,y)	1143.25
Bollinger Bands Bottom (20,2,ma,y)	1118.60
RSI (14)	43
MA (35, Price, ma, 0)	1164.37
MACD (12,26,9)	-12
Signal macd (12,26,9)	-16
macd (12,26,9)_hist	3

Indicators used: Bollinger Bands, MACD, RSI, Moving Average (35 days) Price

Global Indices	SENSEX	NIFTY	S&P 500	DJIA	NIKKEI 225
	38,506.09 (+0.76%)	11,428.30 (+0.77%)	2,995.68 (+1.00%)	27,024.80 (+0.89%)	22,497.00 (+1.30%)



Disclaimers: This MARKET SUMM is prepared to timely update the market participants about the Nepalese stock market before the Market opens for the day. The information and data herein should not be construed as an investment advice or recommendation. Should the investors choose to act based on this report, it shall be entirely at their own risk and KCL Astute shall not be liable, for any loss or damages incurred thereby. Unless otherwise specifically stated, the above data concerns the previous trading day.

KCL Astute Capital Limited

Address: Sundar Bhawan, Hattisar, Kathmandu

Contact No. 977-1-4429149 | 4429150

Email: info@kclastute.com