



NEPSE Index – Monday



MARKET SUMMARY

NEPSE	1,132.40	-0.12%
Total Turnover (Rs.)	164,349,536	+44.98%
Share Volume	608,601	+44.40%
Total Transactions	3,425	+13.98%
Total Market Cap. (Rs. Mill)	1,438,760.30	-0.12%
Floated Market Cap (Rs. Mill)	520,793.23	-0.11%

MARKET CAP TO GDP RATIO 41.53% ▼

WEIGHTAGE ON MARKET CAP

Commercial Banks	53.30%
Development Bank	5.42%
Finance	2.95%
Microfinance	6.61%
Life Insurance	6.80%
Non-life Insurance	5.15%
Hydropower	6.43%
Hotel	1.64%
Manufacturing And Processing	4.06%
Trading	0.12%
Others	7.51%
NTC	6.46%

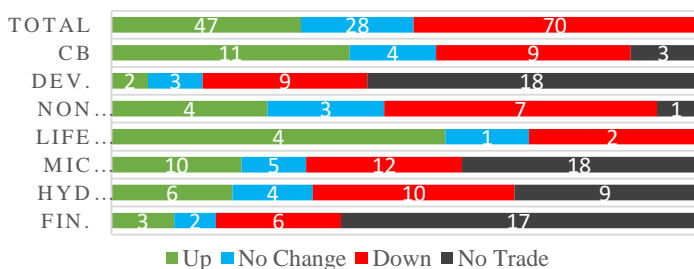
Top Gainers	GGBSL, PLIC, ALBSL
Top Losers	EBLCP, RADHI, KRBL
Top Stocks by Shares Traded	PRVU, API, MEGA
Top Stocks by Transactions	RHPL, PRVU, SJCL
Top Stocks by Turnover	PRVU, NBL, MEGA
Top Brokers by Transactions	39, 45, 34

NEPSE STATISTICS

Average Return	14.67%
Standard Deviation	16.87%
Skewness	0.48
Kurtosis	3.52

Notes: NEPSE Index from 2069.04.01 – 2076.07.04. Avg. annual trade day's 229. Lognormal return is used. Skewness shows market is asymmetrically skewed to right, indicating average return of 14.82% more affected by outliers. Further excess kurtosis shows fat tail and more peaked distribution than normal.

TRADED SCRIPTS STATS



MAJOR MARKET NEWS

- Market lost by marginal 1.33 points on Monday and closed at 1132.40 level.
- Sensitive, Float and Sensitive Float Index all closed red, by losing 0.37, 0.09 and 0.15 points respectively.
- GGBSL is the top gainers which gained by 4.81% whereas EBLCP hit negative circuit by losing 9.28%.
- SCB propose to distribute 22.50% cash dividend to its shareholders.
- Citizen Mutual Fund-2 is open for trading with the stock symbol CMF2 and the open range is set at 10-10 for first transaction
- SEBON adds 30% right shares of SICL in pipeline.
- NMBMF published its Q1 2076/77 financials. Net profit increased by 1403.50% on a y-o-y basis. EPS and BVPS stands at Rs.37.74 and Rs. 200.39 respectively.
- The 16th and 17th AGM of WMBF has passed the resolution to change the name of the company to Samriddhi Finance Company Limited.
- MEGA is inviting its shareholders to attend 9th AGM on 29th Kartik.
- NMBMF is issuing 150% right shares to its shareholders from 24th Kartik.
- NMBMF posted Q1 76/77 financials. The net profit of the company has increased by 1403.05% on a y-o-y basis. EPS and BVPS of the company stands at Rs. 37.74 and Rs. 200.39 respectively.

Today's Events (Tuesday)

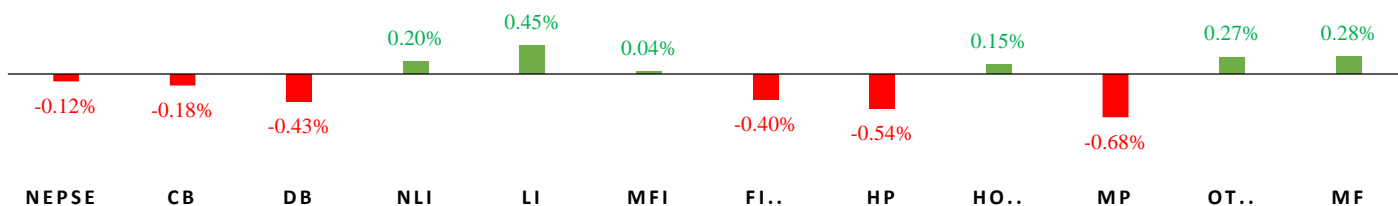
- NFO Alert:** Issue opens of "Sunrise First Mutual Fund" - 100,000,000 units at Rs.10 each.
- Right Shares Alert:** SFFIL is issuing 60% Right
- Right Shares Alert:** SMATA is issuing 200% Right.
- Auction Alert:** LICN is auctioning its 50,000 units Promoter Shares
- Auction Alert:** GILB is auctioning its 56,561 units Ordinary Shares
- Auction Alert:** MPFL is auctioning its 626,557 units Ordinary Shares and 1,860,721 units promoter shares
- IPO Alert:** Shiva Shree is issuing 3351140 units IPO shares. Issue extended till 15th Kartik.
- Debentures Alert:** 10% Laxmi Bank Debenture 2086 open for issuance till 22nd Kartik.



MARKET SUMM...

5th Kartik, 2076 Tuesday

INDICES % CHANGE



Volatile Stocks

SPDL	(72)	9.86%
NLICL	(455)	6.58%
SIC	(491)	6.11%

Stock Movement

GGBSL	(305)	Highest till now
SAPDBL	(119)	Lowest till now
API	(111)	Lowest till now

Highest Volume – Day 2 (Week 13)

PRVU	(263)	112,943 units
API	(111)	45,944 units
MEGA	(194)	45,386 units

Sectorial Outlooks

Bullish

-
-

Bearish

Microfinance
Banking

Stock Pick...

Up Pick

MDB
-

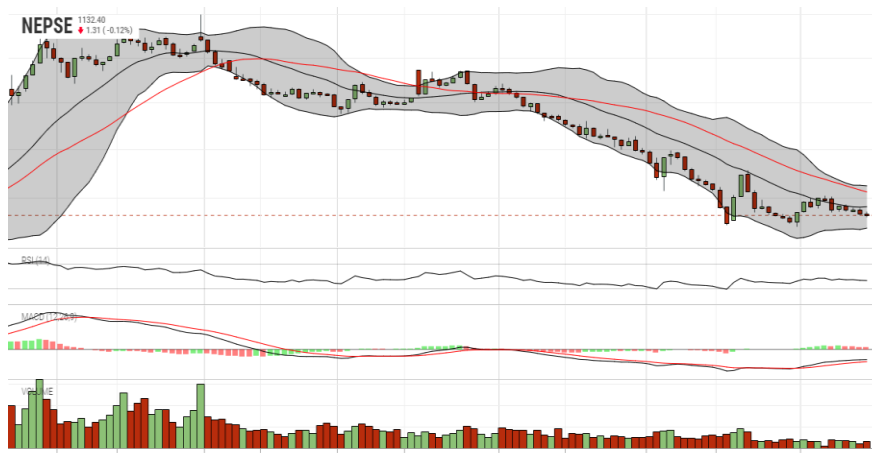
Down Pick

CBL
RHPL

Financial Metrics

S.N.	Ticker	LTP	EPS	BVPS	P/E	P/B	ROE	NPL	CAR	Remarks
1	SHIVM	485	34.16	194.6	14.20	2.49	20.29%	-	-	-
2	LLBS	655	45.84	201.11	14.29	3.26	25.61%	1.26%	13.31%	-
2	JSLBB	993	73.73	327.01	13.47	3.04	26.99%	2.23%	8.37%	-
3	NIL	354	29.22	195.90	12.11	1.81	16.12%	-	-	-
5	SABSL	450	27.87	128.75	16.15	3.50	27.75%	0.45%	9.76%	13% Bonus Proposal

NEPSE TECHNICAL OUTLOOKS



Date / Time	21.10.2019
Close	1132.40
Open	1133.73
High	1135.84
Low	1130.14
Bollinger Bands Top (20,2,ma,y)	1162.11
Bollinger Bands Median (20,2,ma,y)	1141.05
Bollinger Bands Bottom (20,2,ma,y)	1119.98
RSI (14)	39
MA (35, Price, ma, 0)	1155.83
MACD (12,26,9)	-11
Signal macd (12,26,9)	-13
macd (12,26,9)_hist	2

Indicators used: Bollinger Bands, MACD, RSI, Moving Average (35 days) Price

Global Indices	SENSEX 39,298.38 (+0.63%)	NIFTY 11,661.85 (+0.65%)	S&P 500 2,986.20 (-0.39%)	DJIA 26,770.20 (-0.95%)	NIKKEI 225 22,548.90 (+0.25%)
----------------	------------------------------	-----------------------------	------------------------------	----------------------------	----------------------------------



Disclaimers: This MARKET SUMM is prepared to timely update the market participants about the Nepalese stock market before the Market opens for the day. The information and data herein should not be construed as an investment advice or recommendation. Should the investors choose to act based on this report, it shall be entirely at their own risk and KCL Astute shall not be liable, for any loss or damages incurred thereby. Unless otherwise specifically stated, the above data concerns the previous trading day.

KCL Astute Capital Limited

Address: Sundar Bhawan, Hattisar, Kathmandu

Contact No. 977-1-4429149 | 4429150

Email: info@kclastute.com