



MARKET SUMMARY		
NEPSE	1,242.03	-0.23%
Total Turnover (Rs.)	374,725,075	-41.91%
Share Volume	1,221,400	-48.28%
Total Transactions	5,971	-17.08%
Total Market Cap. (Rs. Mill)	1,545,614.29	-0.23%
Floated Market Cap (Rs.Mill)	541,528.95	-0.22%

MARKET CAP TO GDP RATIO	51.39% ▼
-------------------------	----------

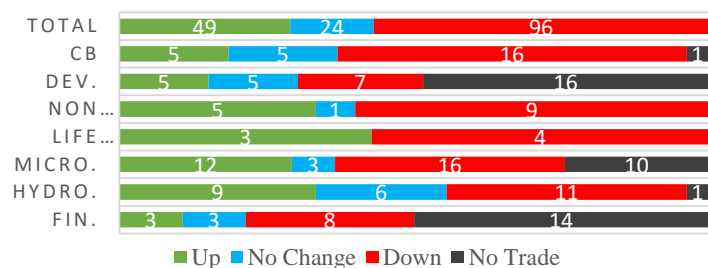
WEIGHTAGE ON MARKET CAP	
Commercial Banks	53.08%
Development Bank	5.14%
Finance	3.01%
Microfinance	5.84%
Life Insurance	7.46%
Non-life Insurance	5.59%
Hydropower	5.90%
Hotel	1.76%
Manufacturing And Processing	4.21%
Trading	0.10%
Others	7.89%
NTC	6.77%

Top Gainers	CLBSL, AHPC, SMFBS
Top Losers	MLBBL, UIC, SMFDB
Top Stocks by Shares Traded	NBL, PRVU, NHPC
Top Stocks by Transactions	SHIVM, GMFBS, UPPER
Top Stocks by Turnover	NBL, PRVU, SHIVM
Top Brokers by Turnover	4, 49, 34

NEPSE STATISTICS	
Average Return	16.67%
Standard Deviation	17.06%
Standard Error	1.13%
Skewness	0.46
Kurtosis	3.46

Notes: NEPSE Index from 2069.04.01 – 2076.03.16. Avg. annual trade day's 229. Lognormal return is used. Skewness shows market is asymmetrically skewed to right, indicating average return of 16.67% more affected by outliers. Further excess kurtosis shows fat tail and more peaked distribution than normal.

### TRADED SCRIPTS STATS



### MARKET OVERVIEW

NEPSE reported a marginal fall of 2.86 points on second trading day of the week closing at 1242.03 on Monday. After the consecutive fall for 4 days, NEPSE is at lowest since past 2.5 months. Other indicators like Turnover, Volume and Transaction all decreased by 41.91%, 48.28% and 17.08% respectively. Market took a steep fall in 45 minutes of opening the trading and throughout the day hovered around the region of 1237.43 to 1245.69. The trade of 169 scripts led to a turnover of Rs. 37.47 crores. Sensitive, Float and Sensitive Float closed Red with fall of 0.72, 0.2 and 0.18 points respectively.

Most of the sub-indices closed red at the end of the day whereas other indices like Manu & Pro, Life Insurance, Development Bank and Hydropower posted a gain of 4.89, 3.15, 2.76 and 1.11 points respectively. Major losing sectors were Hotels, Others and Banking that dropped by 19.39, 4.72 and 3.54 points respectively. Likewise, Microfinance posted a loss of 0.26 points.

SLBBL outperformed its respective sector while CLBSL and KRBL underperformed the most in comparison to their respective sectors. AHPC, UMHL and RRHP were the most volatile stocks. MPFL, KSBBL and SEF traded closest to their 52 week high whereas SMB, PRIN, and HGI traded closest to their 52 week low.

### MAJOR MARKET NEWS

- NRB is renewing the T Bill auction worth Rs. 10 crores. These T-bills will mature on Ashwin 14, 2076.
- SLBBL will conduct SGM on 11th Shrawan, 2076. The book closure for the same is 24<sup>th</sup> Asadh, 2076. The main agenda of the SGM is to issue 100% right shares after the completion of merger or acquisition process.
- The merger of Saptakoshi Development Bank and Kabeli Bikas Bank is completed. The joint transaction is likely to start from 22<sup>nd</sup> Asadh, 2076.
- SIL 17<sup>th</sup> AGM endorsed 15.48% Bonus shares for the FY 2074/75.
- PIC has called its shareholders to attend the AGM on 31<sup>st</sup> Asadh, 2076. The book closure date for the same is set on 20<sup>th</sup> Asadh, 2076. The special agenda of the AGM is to issue 84% bonus shares.
- IPO worth of Rs. 60 crores relating to Prabhu Life Insurance is underway.



**Under Watch: Monetary Policy for FY 2076/77**  
– likely date 27<sup>th</sup> Asadh

### Major Events (Today)

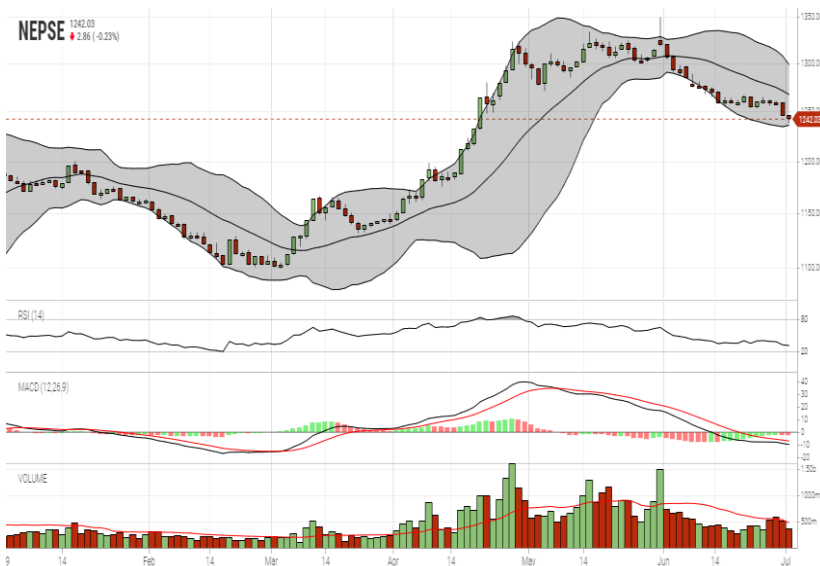
- 📌 Last day to be eligible for 20% bonus shares of JSLBB.
- 📌 **Auction:** Last day to apply for the 1.1 lakh units promoter shares of NLBBL via auction.
- 📌 **Auction:** CBL is selling its 149,089 unit promoter shares till 22<sup>nd</sup> Asadh, 2076.
- 📌 **Right Issue:** 100% Right Shares of JSLBB is open for issuance till 15<sup>th</sup> Shrawan, 2076.

GLOBAL INDICES		
SENSEX	39,686.50	+291.86
NIFTY	11,865.60	+76.75
S&P 500	2,941.74	+16.82
DJIA	26,599.96	+73.38
NIKKEI 225	21,729.97	+454.05

	Stock Name	Ticker	LTP
UNDER PRICED	Kumari Bank Ltd.	KBL	210.00
	Nepal Bank Ltd.	NBL	333.00
	Prime Commercial Bank Ltd.	PCBL	273.00
	Civil Bank Ltd.	CBL	145.00
	Nepal Credit And Commercial Bank	NCCB	244.00
FAIRLY PRICED	Janata Bank Nepal Limited	JBNL	208.00
	Mega Bank Nepal Limited	MEGA	198.00
	Global IME Bank Limited	GBIME	297.00
	Sunrise Bank Limited	SRBL	246.00
	Agriculture Development Bank	ADBL	405.00
OVER PRICED	Standard Chartered Bank Limited	SCB	654.00
	Everest Bank Limited	EBL	655.00
	Nepal SBI Bank Limited	SBI	464.00
	Himalayan Bank Limited	HBL	550.00
	Nabil Bank Limited	NABIL	785.00

**Notes:** # Above pricing is performed by averaging the prices derived as per P/E, P/B and 180 days closing averages. Based on Published Q3 75/76 data.  
# Harmonic Mean of industries is carried for Pricings.

### NEPSE TECHNICAL OUTLOOKS



Date / Time	16.03.2076
Close	1242.03
Open	1245.58
High	1245.69
Low	1237.43
Turnover	374,725,075
Bollinger Bands Top Bollinger Bands (20,2,ma,y)	1298.72
Bollinger Bands Median Bollinger Bands (20,2,ma,y)	1267.24
Bollinger Bands Bottom Bollinger Bands (20,2,ma,y)	1235.76
RSI (14)	32
MA (20, Volume, ma, 0)	477m
MACD (12,26,9)	-10
Signal macd (12,26,9)	-7
macd (12,26,9)_hist	-3

Indicators used: Bollinger Bands, MACD, RSI, Moving Average (20 days) Volume



*Disclaimers: This MARKET SUMM is prepared to timely update the market participants about the Nepalese stock market before the Market opens for the day. The information and data herein should not be construed as an investment advice or recommendation. Should the investors choose to act based on this report, it shall be entirely at their own risk and KCL Astute shall not be liable, for any loss or damages incurred thereby. Unless otherwise specifically stated, the above data concerns the previous trading day.*

### KCL Astute Capital Limited

Address: Sundar Bhawan, Hattisar, Kathmandu

Contact No. 977-1-4429149 | 4429150,

Email: [info@kclastute.com](mailto:info@kclastute.com)