



MARKET SUMMARY		
NEPSE	1,305.68	-1.05%
Total Turnover (Rs.)	753,257,209	-50.71%
Share Volume	2,078,091	-57.54%
Total Transactions	9,803	-39.87%
Total Market Cap. (Rs. Mill)	1,622,424.92	-1.05%
Floated Market Cap (Rs. Mill)	567,297.30	-1.05%

MARKET CAP TO GDP RATIO	53.94%	▼
--------------------------------	---------------	----------

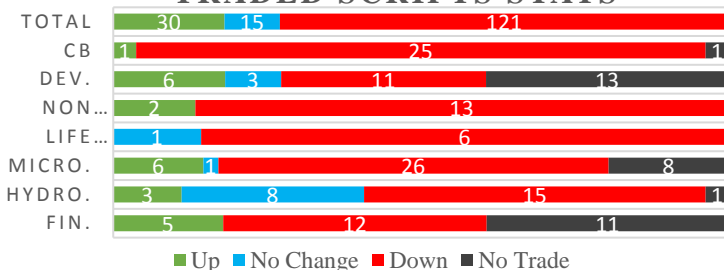
WEIGHTAGE ON MARKET CAP	
Commercial Banks	52.68%
Development Bank	5.03%
Finance	3.01%
Microfinance	5.80%
Life Insurance	7.74%
Non-life Insurance	6.03%
Hydropower	5.91%
Hotel	1.73%
Manufacturing And Processing	4.21%
Trading	0.09%
Others	7.77%
NTC	6.63%

Top Gainers	KNBL, TRH, MHNL
Top Losers	PPCL, GRDBL, SDESI
Top Stocks by Shares Traded	PRVU, SHIVM, NBL
Top Stocks by Transactions	PIC, SHIVM, UPPER
Top Stocks by Turnover	PIC, SHIVM, NBL
Top Brokers by Turnover	58, 49, 34

NEPSE STATISTICS	
Average Return	17.59%
Standard Deviation	17.14%
Standard Error	1.13%
Skewness	0.45
Kurtosis	3.41

Notes: NEPSE Index from 2069.04.01 – 2076.02.19. Avg. annual trade day's 229. Lognormal return is used. Skewness shows market is asymmetrically skewed to right, indicating average return of 17.59% more affected by outliers. Further excess kurtosis shows fat tail and more peaked distribution than normal.

TRADED SCRIPTS STATS



MARKET OVERVIEW

NEPSE opened the week's trade with a bearish candle, reporting a fall of 13.79 points and closing at 1305.68 level. Market reported a loss throughout the day showing no signs of upward momentum from the previous day's close. It traded at the range of 1319.98 to 1304.53. Turnover, Share Volume and transactions decreased substantially by 50.71%, 57.54% and 39.87% respectively. A total trade of 166 scripts resulted in a total turnover of Rs. 75.32 crores. Sensitive, Float and Sensitive Float decreased by 3.03, 1.02 and 0.93 points respectively.

All the sectors reported loss in their sub-indices except Hotels and Manu & Pro. which posted a gain of 12.61 and 10.11 points respectively. Sectors to lose the most throughout the day were Life Insurance followed by Non- Life Insurance and Hydropower which lost by 59.37, 42.83 and 22.28 points respectively. Banking and Microfinance posted a loss of 13.77 and 18.08 points respectively.

GRDBL, SDESI, and SPARS underperformed the most as compared to its sector performance while KNBL, TRH, and MHNL outperformed its respective sectors. HURJA, MHNL and AKPL were the most volatile stocks. VLBS, JOSHI and MSLB traded closer to 52 weeks low while KNBL, HURJA, and KADBL traded near to 52 weeks high.

KNBL and TRH hit the positive circuit, gaining 9.88% and 9.80% respectively while PPCL hit the negative circuit losing 9.81%.

MAJOR MARKET NEWS

- 📌 NEPSE has listed 7,75,063 Units (25%) Bonus shares of FOWAD.
- 📌 WDBL to convene its 13th AGM on 12th Ashad; 14.74% cash dividend; M&A with DBBL – swap ratio 1:1
- 📌 SLICL to held its 11th AGM on 11th Ashad; book closure date 28th Jestha; 12% bonus shares
- 📌 Allotment of Infinity Laghubitta IPO to be made on Wednesday.
- 📌 TRH to held its 22nd AGM on Jestha 24; 12.63% Cash dividend

NRB to auction Treasure Bill worth Rs.3.13 arba of 91 days and Rs.2 arba of 364 days on 20th Jestha (Monday); issue to be made on 21st Jestha.



Major Events (Today)

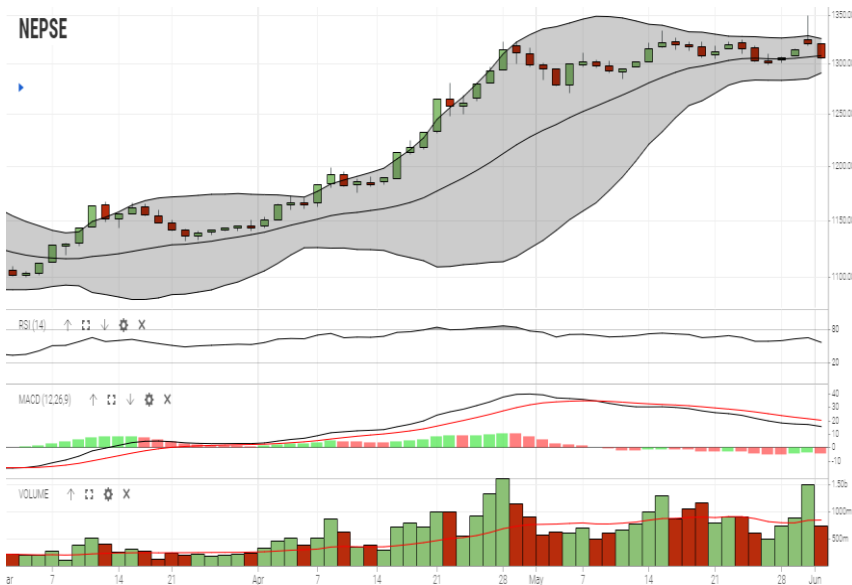
- 2nd & 3rd AGM of PMHPL
- AGM of UPCL
- Book closure day of KBL SGM
- NFO Alert:** NIBL Sahabhagita Fund, an Open End Mutual Fund worth Rs.12.5 crores (12.5 million at Rs.10 each) open; Issue closes on 22nd Jestha.
- NFO Alert:** Citizens Mutual Fund-2 (CMF II), 7-years closed end fund worth Rs.1 billion (100 million units at Rs.10) undersubscribed; issue is extended till 8th Asadh, 2076.
- Himal Dolkha Hydropower Company Ltd. issuing 16 lakhs units IPO to the locals of project affected area of Ilam district.
- 10.25% NBBL Debenture 2085

GLOBAL INDICES		
SENSEX	39,714.20	-117.77
NIFTY	11,922.80	-23.10
S&P 500	2,752.06	-36.80
DJIA	24,815.04	-354.84
NIKKEI 225	20,601.19	-341.34

	Stock Name	Ticker	LTP
UNDER PRICED	Nepal Bank Ltd.	NBL	335.00
	Kumari Bank Ltd.	KBL	218.00
	Civil Bank Ltd.	CBL	147.00
	Prime Commercial Bank Ltd.	PCBL	307.00
	Nepal Bangladesh Bank Ltd.	NBB	225.00
FAIRLY PRICED	Agriculture Development Bank Ltd.	ADBL	422.00
	Janata Bank Nepal Ltd.	JBNL	210.00
	Mega Bank Nepal Ltd.	MEGA	204.00
	Sunrise Bank Limited	SRBL	257.00
OVER PRICED	Laxmi Bank Limited	LBL	224.00
	Standard Chartered Bank Limited	SCB	692.00
	Everest Bank Limited	EBL	671.00
	Nepal SBI Bank Limited	SBI	482.00
	Himalayan Bank Limited	HBL	575.00
	Nabil Bank Limited	NABIL	834.00

Notes: # Above pricing is performed by averaging the prices derived as per P/E, P/B and 180 days closing averages. Based on Published Q3 75/76 data.
Harmonic Mean of industries is carried for Pricings.

NEPSE TECHNICAL OUTLOOKS



Date / Time	19.02.2076
Close	1305.68
Open	1319.96
High	1319.98
Low	1304.53
Turnover	753,257,209
Bollinger Bands Top Bollinger Bands (20,2,ma,y)	1325.70
Bollinger Bands Median Bollinger Bands (20,2,ma,y)	1308.14
Bollinger Bands Bottom Bollinger Bands (20,2,ma,y)	1290.58
RSI (14)	57
MA (20, Volume, ma, 0)	839m
MACD (12,26,9)	16
Signal macd (12,26,9)	20
macd (12,26,9)_hist	-5

Indicators used: Bollinger Bands, MACD, RSI, Moving Average (20 days) Volume



Disclaimers: This MARKET SUMM is prepared to timely update the market participants about the Nepalese stock market before the Market opens for the day. The information and data herein should not be construed as an investment advice or recommendation. Should the investors choose to act based on this report, it shall be entirely at their own risk and KCL Astute shall not be liable, for any loss or damages incurred thereby. Unless otherwise specifically stated, the above data concerns the previous trading day.

KCL Astute Capital Limited

Address: Sundar Bhawan, Hattisar, Kathmandu

Contact No. 977-1-4429149 | 4429150,

Email: info@kclastute.com