



17th Bhadra, 2076 Tuesday

Market Summ... concerning previous day's trading Monday"

NEPSE Index – Monday



MARKET SUMMARY

NEPSE	1,170.34	-1.22%
Total Turnover (Rs.)	407,569,712	37.05%
Share Volume	1,380,660	25.02%
Total Transactions	10,770	66.26%
Total Market Cap. (Rs. Mill)	1,486,341.89	-1.22%
Floated Market Cap (Rs.Mill)	534,592.4	-1.24%

MARKET CAP TO GDP RATIO 49.42% ▼

WEIGHTAGE ON MARKET CAP

Commercial Banks	52.98%
Development Bank	5.37%
Finance	2.93%
Microfinance	6.46%
Life Insurance	6.91%
Non-life Insurance	5.27%
Hydropower	6.50%
Hotel	1.75%
Manufacturing And Processing	4.04%
Trading	0.11%
Others	7.68%
NTC	6.64%

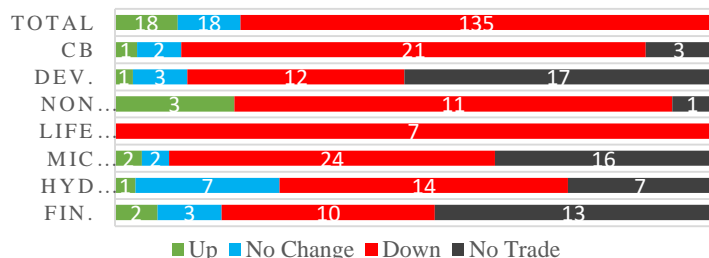
Top Gainers	DHPL, SABSL, AKBSL
Top Losers	GBLBS, SMB, UFL
Top Stocks by Shares Traded	UFL, KBL, NBL
Top Stocks by Transactions	SABSL, SJCL, RHPL
Top Stocks by Turnover	NBL, NLIC, UFL
Top Brokers by Transactions	32, 34, 45

NEPSE STATISTICS

Average Return	15.39%
Standard Deviation	16.90%
Skewness	0.47
Kurtosis	3.55

Notes: NEPSE Index from 2069.04.01 – 2076.05.16. Avg. annual trade day's 229. Lognormal return is used. Skewness shows market is asymmetrically skewed to right, indicating average return of 15.39% more affected by outliers. Further excess kurtosis shows fat tail and more peaked distribution than normal.

TRADED SCRIPTS STATS



MAJOR MARKET NEWS

- 📌 Market continued its free fall on Monday with a double digit loss of 14.45 points; NEPSE Index closed at 1170.34.
- 📌 Sensitive, Float and Sensitive Float Index all fell by 2.98, 1.08 and 1.03 points respectively.
- 📌 All Sub-indices closed Red on the day.
- 📌 CDS and Clearing Limited has added a new feature in Meroshare that enables investors to compute and declare capital gain tax online through weighted average cost basis, without having to visit broker's office; CDS&C has brought the system as a Trial, seeking the users/investors to provides the feedback; CDS&C has also made several changes to the features of Meroshare.
- 📌 NEPSE has listed 2 million units of "10.25% Nepal Investment Debenture 2082".
- 📌 NEPSE has listed 16,84,505 units of 10% N"MB Debenture 2085".
- 📌 GBIME to commence joint transaction after acquisition of HATH, from 18th Bhadra, 2076.
- 📌 BOKL 130th BoD Meeting proposed 11% Cash dividend (including tax) and 6% Bonus for FY 2075/76.
- 📌 Citizens Mutual Fund 1 (CMF1) to distribute 7% Cash dividend (including tax) for FY 2075/76.
- 📌 Siddhartha Equity Oriented Scheme (SEOS), after maturity started the liquidation of shares and debentures via auction from 16th Bhadra.
- 📌 CLBSL to issue 100% Right Shares.
- 📌 MPFL to convene the 20th and 21st AGM of FY 2073/74 and FY 2074/75 respectively on 6th Ashoj.
- 📌 NRB assured the safety of depositor's money, following the theft of millions of rupees from hacking of ATM system of Banks by Chinese hackers.

Today's Events (Tuesday)

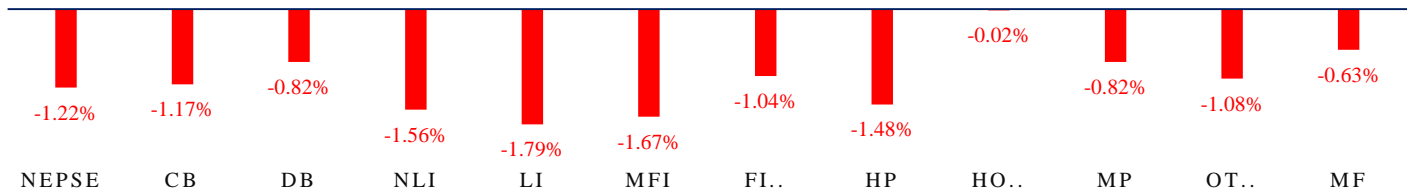
- 📌 NRB to issue Treasury Bill worth Rs.8.655 Billion, after its auction on Monday, 16th Bhadra.
- 📌 **Debentures Alert:** SBL is issuing 10.25% 25 lakh units debentures. Issue open till 19th Bhadra.
- 📌 **Right Shares Alert:** MNBBL is issuing 20% Right
- 📌 **Right Shares Alert:** SLICL is issuing 70% Right
- 📌 **Right Shares Alert:** GILB is issuing 100% Right
- 📌 **Right Shares Alert:** UIC is issuing 240% Right
- 📌 **Auction Alert:** CBL is selling its 1,282,881 units promoter shares via auction.
- 📌 **Auction Alert:** BFC is selling its 557,674.57 units promoter shares and 244,549.90 units ordinary shares via auction.
- 📌 **Auction Alert:** JSLBB is selling its 18,503 units ordinary shares via auction.



MARKET SUMM...

17th Bhadra, 2076 Tuesday

INDICES % CHANGE

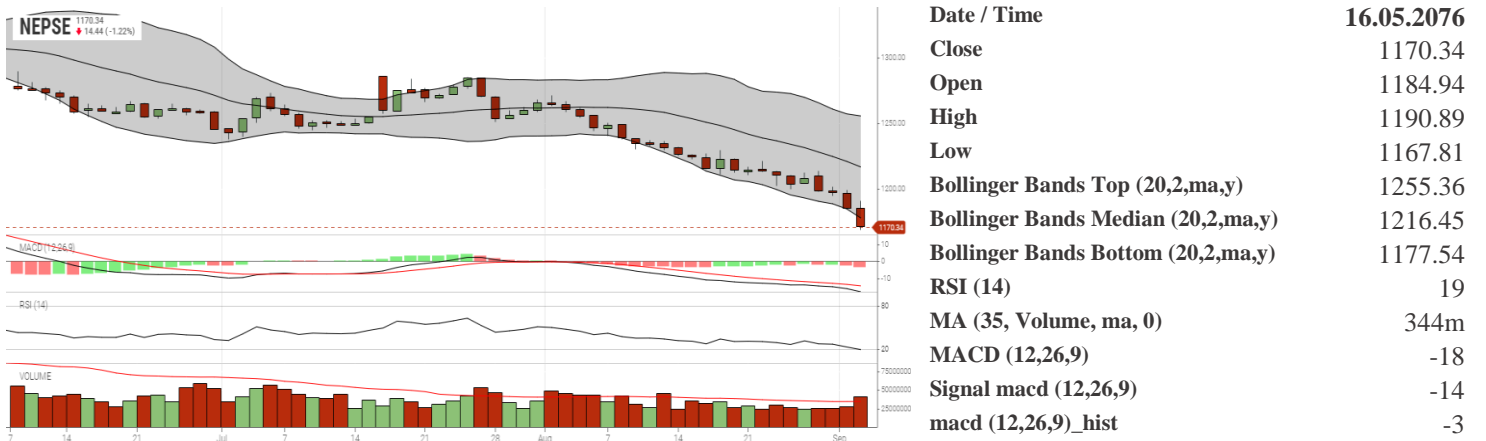


Volatile Stocks			Stock Movement			Highest Volume – Day 5 (Week 7)		
GBLBS	(335)	15.76%	AKBSL	(342)	Highest till now	KBL	(201)	140,227 units
UFL	(180)	12.97%	SABSL	(507)	Highest till now	UFL	(180)	120,926 units
NGPL	(108)	10.2%	NGPL	(108)	Lowest till now	NBL	(314)	109,558 units

Sectorial Outlooks		Stock Pick...	
Bullish	Bearish	Up Pick	Down Pick
Finance	Life Insurance	SABSL	SHIVM
-	Non-Life Insurance	AKBSL	HGI

Financial Metrics										
S.N.	Ticker	LTP	EPS	BVPS	P/E	P/B	ROE	NPL	CAR	Remarks
1	SICL	755	44.73	250.17	16.88	3.02	19.64%	-	-	-
1	SIC	540	27.62	191.17	19.55	2.82	15.57%	-	-	-
2	JSLBB	892	73.73	327.01	12.10	2.73	26.99%	2.23%	8.37%	-
3	NIL	380	29.22	195.90	13.00	1.94	16.12%	-	-	-
5	BFC	91	9.92	87.53	9.17	1.04	17.56%	18.46%	17.17%	-

NEPSE TECHNICAL OUTLOOKS



Indicators used: Bollinger Bands, MACD, RSI, Moving Average (35 days) Volume

Global Indices	SENSEX	NIFTY	S&P 500	DJIA	NIKKEI 225
	36,893.48 (-1.18%)	10,890.80 (-1.20%)	2,926.46 (+0.06%)	26,403.28 (+0.16%)	20,643.50 (+0.11%)



Disclaimers: This MARKET SUMM is prepared to timely update the market participants about the Nepalese stock market before the Market opens for the day. The information and data herein should not be construed as an investment advice or recommendation. Should the investors choose to act based on this report, it shall be entirely at their own risk and KCL Astute shall not be liable, for any loss or damages incurred thereby. Unless otherwise specifically stated, the above data concerns the previous trading day.

KCL Astute Capital Limited

Address: Sundar Bhawan, Hattisar, Kathmandu

Contact No. 977-1-4429149 | 4429150

Email: info@kclastute.com