



MARKET SUMMARY		
NEPSE	1,292.84	-0.98%
Total Turnover (Rs.)	698,739,706	-7.24%
Share Volume	2,176,370	+4.73%
Total Transactions	8,447	-13.83%
Total Market Cap. (Rs. Mill)	1,606,681.52	-0.97%
Floated Market Cap (Rs. Mill)	561,831.21	-0.96%

MARKET CAP TO GDP RATIO	53.41% ▼
--------------------------------	-----------------

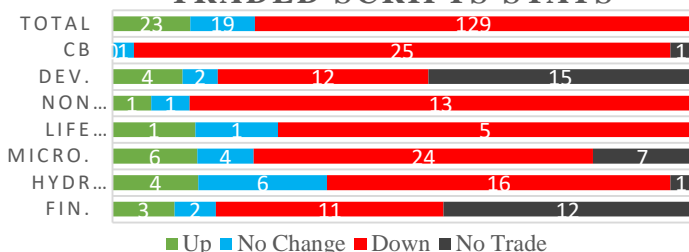
WEIGHTAGE ON MARKET CAP	
Commercial Banks	52.69%
Development Bank	5.09%
Finance	3.02%
Microfinance	5.82%
Life Insurance	7.75%
Non-life Insurance	6.01%
Hydropower	5.87%
Hotel	1.72%
Manufacturing And Processing	4.17%
Trading	0.09%
Others	7.80%
NTC	6.68%

Top Gainers	TRH, GLBSL, KNBL
Top Losers	PPCL, CORBL, WMBF
Top Stocks by Shares Traded	NICA, PRVU, UPPER
Top Stocks by Transactions	NICA, UPPER, SHIVM
Top Stocks by Turnover	NICA, SHIVM, PRVU
Top Brokers by Turnover	58, 49, 45

NEPSE STATISTICS	
Average Return	17.44%
Standard Deviation	17.14%
Standard Error	1.13%
Skewness	0.45
Kurtosis	3.41

Notes: NEPSE Index from 2069.04.01 – 2076.02.20. Avg. annual trade day's 229. Lognormal return is used. Skewness shows market is asymmetrically skewed to right, indicating average return of 17.44% more affected by outliers. Further excess kurtosis shows fat tail and more peaked distribution than normal.

TRADED SCRIPTS STATS



MARKET OVERVIEW

Market closed red for the day at 1292.84 level, losing a double digit of 12.84 points. Market floated at the range of 1308.63 to 1291.02 level. Turnover and total transactions decreased by 7.24% and 13.83% respectively while Share volume saw an increase of 4.73%. A total trade of 171 scripts resulted in a total turnover of Rs. 69.87 Crores. Sensitive, Float and Sensitive Float decreased by 2.64, 0.93 and 0.86 points respectively.

All sectors reported a loss for the day closing at a red. Among these, the most to fall were Non-Life Insurance, Manu. & Pro. and Life Insurance with decline in points of 67.64, 54.78 and 54.73 respectively.

TRH, KNBL and RLFL outperformed its respective sectors by the most while ALBSL, KPCL and OHL underperformed the most in relation to its respective sectors. KPCL, TRH and HURJA were the most volatile stocks. TRH, KNBL and KADBL traded closest to 52 week high whereas MSLB, VLBS and SLBBL traded closest to 52 week low.

PPCL hit the negative circuit, losing 9.52%

MAJOR MARKET NEWS

- 📌 DBBL will convene its 12th AGM on Ashad 12 2076; major agenda: bonus share endorsement and acquisition of WDBL.
- 📌 Life Insurance Companies have extended loan of Rs. 27.99 billion against Insurance policies in the 3rd quarter of the current FY.
- 📌 VLBS is distributing 10% bonus shares directly to DMAT accounts and have urged their shareholders to dematerialize their shares.
- 📌 Allotment of Infinity Laghubitta IPO to be made on Wednesday.
- 📌 SLICL to hold its 11th AGM on Ashad 11, 2076; agenda: 12% bonus, 0.632% cash dividend and other issues.
- 📌 NEPSE has listed 4.63 lakh units IPO shares of JLBS for trading.
- 📌 PIC proposes 79.79% bonus shares and 4.20% cash dividend.
- 📌 MERO microfinance opens bid for the auction of its 2.09 lakh ordinary shares from today



Major Events (Today)

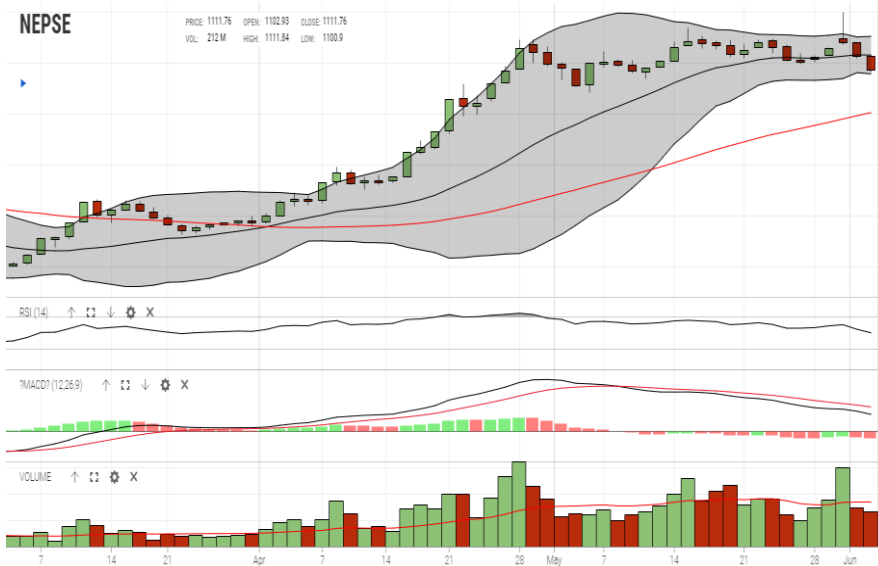
- Book Closure Day of UPPER
- NFO Alert:** NIBL Sahabagita Fund, an Open End Mutual Fund worth Rs.12.5 crores (12.5 million at Rs.10 each) open; Issue closes on 22nd Jestha.
- NFO Alert:** Citizens Mutual Fund-2 (CMF II), 7-years closed end fund worth Rs.1 billion (100 million units at Rs.10) undersubscribed; issue is extended till 8th Asadh, 2076.
- Himal Dolkha Hydropower Company Ltd. issuing 16 lakhs units IPO to the locals of project affected area of Ilam district.
- 10.25% NBBL Debenture 2085

GLOBAL INDICES		
SENSEX	40093.57	-174.05
NIFTY	12026.3	-62.25
S&P 500	2744.45	-7.61
DJIA	24819.78	+4.74
NIKKEI 225	20383.5	-27.38

	Stock Name	Ticker	LTP
UNDER PRICED	Nepal Bank Ltd.	NBL	331.00
	Kumari Bank Ltd.	KBL	217.00
	Civil Bank Ltd.	CBL	146.00
	Prime Commercial Bank Ltd.	PCBL	305.00
	Nepal Bangladesh Bank Ltd.	NBB	223.00
FAIRLY PRICED	Sunrise Bank Limited	SRBL	253.00
	Laxmi Bank Limited	LBL	221.00
	Mega Bank Nepal Ltd.	MEGA	202.00
	Global IME Bank Ltd.	GBIME	303.00
OVER PRICED	Agricultural Development Bank Ltd.	ADBL	414.00
	Standard Chartered Bank Limited	SCB	684.00
	Everest Bank Limited	EBL	671.00
	Nepal SBI Bank Limited	SBI	472.00
	Himalayan Bank Limited	HBL	573.00
	Nabil Bank Limited	NABIL	833.00

Notes: # Above pricing is performed by averaging the prices derived as per P/E, P/B and 180 days closing averages. Based on Published Q3 75/76 data.
Harmonic Mean of industries is carried for Pricings.

NEPSE TECHNICAL OUTLOOKS



Indicators used: Bollinger Bands, MACD, RSI, Moving Average (20 days) Volume

Date / Time	19.03.2076
Close	1292.84
Open	1306.88
High	1308.63
Low	1291.02
Turnover	698,739,706
Bollinger Bands Top Bollinger Bands (20,2,ma,y)	1326.23
Bollinger Bands Median Bollinger Bands (20,2,ma,y)	1307.81
Bollinger Bands Bottom Bollinger Bands (20,2,ma,y)	1289.38
RSI (14)	50
MA (20, Volume, ma, 0)	846m
MACD (12,26,9)	13
Signal macd (12,26,9)	19
macd (12,26,9)_hist	-6



Disclaimers: This MARKET SUMM is prepared to timely update the market participants about the Nepalese stock market before the Market opens for the day. The information and data herein should not be construed as an investment advice or recommendation. Should the investors choose to act based on this report, it shall be entirely at their own risk and KCL Astute shall not be liable, for any loss or damages incurred thereby. Unless otherwise specifically stated, the above data concerns the previous trading day.

KCL Astute Capital Limited

Address: Sundar Bhawan, Hattisar, Kathmandu

Contact No. 977-1-4429149 | 4429150,

Email: info@kclastute.com