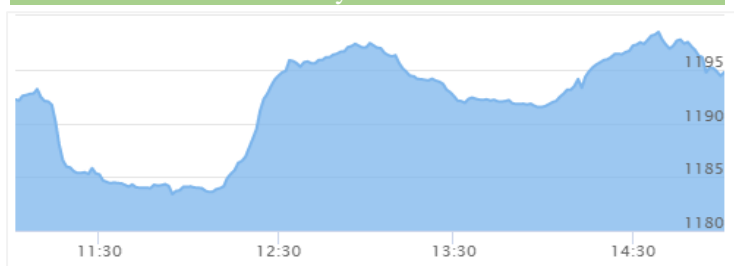




19<sup>th</sup> Bhadra, 2076 Thursday

Market Summ... concerning previous day's trading Wednesday"

## NEPSE Index – Wednesday



## MARKET SUMMARY

NEPSE	1,194.77	+0.32%
Total Turnover (Rs.)	436,444,688	-14.52%
Share Volume	1,422,112	-34.89%
Total Transactions	6,628	-15.21%
Total Market Cap. (Rs. Mill)	1,517,372.64	+0.32%
Floated Market Cap (Rs. Mill)	547,043.27	+0.42%

MARKET CAP TO GDP RATIO 50.45% ▲

## WEIGHTAGE ON MARKET CAP

Commercial Banks	53.12%
Development Bank	5.35%
Finance	2.89%
Microfinance	6.48%
Life Insurance	6.96%
Non-life Insurance	5.34%
Hydropower	6.54%
Hotel	1.74%
Manufacturing And Processing	4.00%
Trading	0.11%
Others	7.48%
NTC	6.45%

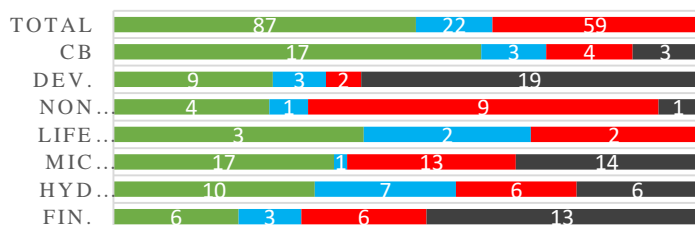
Top Gainers	PPCL, RHPC, KRBL
Top Losers	HIDCL, SFFIL, UFL
Top Stocks by Shares Traded	MBL, NBL, PRVU
Top Stocks by Transactions	SABSL, SJCL, RHPL
Top Stocks by Turnover	MBL, NBL, CIT
Top Brokers by Transactions	49, 34, 45

## NEPSE STATISTICS

Average Return	15.66%
Standard Deviation	16.90%
Skewness	0.47
Kurtosis	3.54

Notes: NEPSE Index from 2069.04.01 – 2076.05.18. Avg. annual trade day's 229. Lognormal return is used. Skewness shows market is asymmetrically skewed to right, indicating average return of 15.66% more affected by outliers. Further excess kurtosis shows fat tail and more peaked distribution than normal.

## TRADED SCRIPTS STATS



■ Up ■ No Change ■ Down ■ No Trade

## MAJOR MARKET NEWS

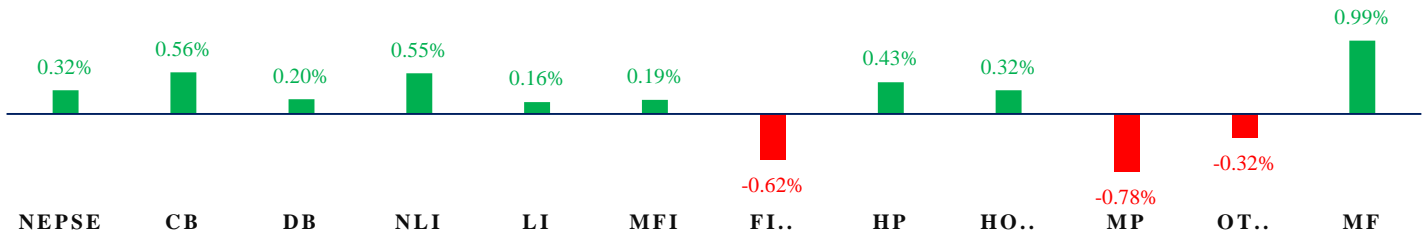
- Market gained 3.87 points on Wednesday; NEPSE Index closed at 1194.77 level.
- Sensitive, Float and Sensitive Float Index all gained 0.63, 0.37 and 0.39 points respectively.
- SDESI proposed 20% Bonus and 13.25% Cash Dividend (including tax) for FY 2075/76.
- NEPSE has listed 20,00,000 units of 10.25 % NBBL Debenture 2085
- Joint transaction of GBIME and HATH after the acquisition of latter by former, began from Wednesday.
- SFFIL revised the Book closure date for 60% Right Shares from 20<sup>th</sup> Bhadra to 6<sup>th</sup> Ashoj.
- Ghodighoda Laghubitta Bittiya Sanstha Ltd. set to trade in Secondary Market with the Ticker GGBSL.
- Credit Information Bureau (CIB) data hinted the growing Default risk in the BFIs system; No. of defaulters increased to 2,842 by end of FY 75/76 as compared to 1,335 in FY 74/75.
- UPPER claimed to finish the 456MW Project by Chaitra 2076.
- WOMI and Nagarik Laghubitta to join Merger hands; calls SGM on Ashoj 2.
- Government intent to divest its stakes in NTC, limiting its holding to 66% from 91.52%.
- NCCB to convene its 20<sup>th</sup> and 21<sup>st</sup> AGM for FY 2073/74 and FY 2074/75 on 23<sup>rd</sup> Bhadra; Major agendas – Endorsement of 15.89% Bonus for FY 74/75, Amend MoA and AoA authorizing the issue of FPO, provide Brokerage service through Subsidiary etc.

## Today's Events (Thursday)

- Book closure date of CIT; 22% Bonus share underway
- Debentures Alert:** SBL is issuing 10.25% 25 lakh units debentures. Issue open till 19<sup>th</sup> Bhadra.
- Right Shares Alert:** MNBBL is issuing 20% Right
- Right Shares Alert:** SLICL is issuing 70% Right
- Right Shares Alert:** GILB is issuing 100% Right
- Right Shares Alert:** UIC is issuing 240% Right
- Auction Alert:** BFC is selling its 557,674.57 units promoter shares and 244,549.90 units ordinary shares via auction.



### INDICES % CHANGE

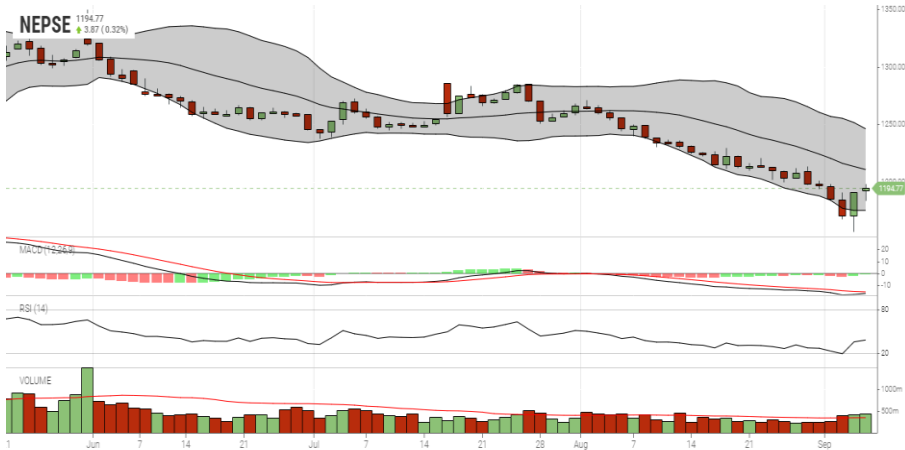


Volatile Stocks			Stock Movement			Highest Volume – Day 3 (Week 8 )		
PPCL	(106)	10.53%	NHDL	(103)	Lowest till now	MBL	(258)	762,149 units
SLICL	(295)	10.36%	AKJCL	(61)	Lowest till now	KBL	(206)	239,635 units
API	(118)	7.96%				NBL	(320)	236,146 units

Sectorial Outlooks		Stock Pick...	
Bullish	Bearish	Up Pick	Down Pick
Banking	Hydropower	NBB	PPCL
Development Bank	-	MBL	KKHC

Financial Metrics										
S.N.	Ticker	LTP	EPS	BVPS	P/E	P/B	ROE	NPL	CAR	Remarks
1	UPCL	84	1.37	101.19	61.31	0.83	-	-	-	-
1	SIC	541	27.62	191.17	19.59	2.83	15.57%	-	-	-
2	JSLBB	927	73.73	327.01	12.57	2.83	26.99%	2.23%	8.37%	-
3	NIL	390	29.22	195.90	13.55	1.99	16.12%	-	-	-
5	BFC	92	9.92	87.53	9.27	1.05	17.56%	18.46%	17.17%	-

### NEPSE TECHNICAL OUTLOOKS



Date / Time	18.05.2076
Close	1194.77
Open	1192.61
High	1198.48
Low	1183.40
Bollinger Bands Top (20,2,ma,y)	1246.29
Bollinger Bands Median (20,2,ma,y)	1211.02
Bollinger Bands Bottom (20,2,ma,y)	1175.76
RSI (14)	38
MA (35, Volume, ma, 0)	348m
MACD (12,26,9)	-16
Signal macd (12,26,9)	-15
macd (12,26,9)_hist	-1

Indicators used: Bollinger Bands, MACD, RSI, Moving Average (35 days) Volume

Global Indices	SENSEX	NIFTY	S&P 500	DJIA	NIKKEI 225
	36,798.28 (+0.20%)	10,880.35 (+0.33%)	2,937.78 (+1.08%)	26,355.47 (+0.91%)	21,098.00 (+2.11%)



Disclaimers: This MARKET SUMM is prepared to timely update the market participants about the Nepalese stock market before the Market opens for the day. The information and data herein should not be construed as an investment advice or recommendation. Should the investors choose to act based on this report, it shall be entirely at their own risk and KCL Astute shall not be liable, for any loss or damages incurred thereby. Unless otherwise specifically stated, the above data concerns the previous trading day.

**KCL Astute Capital Limited**  
 Address: Sundar Bhawan, Hattisar, Kathmandu  
 Contact No. 977-1-4429149 | 4429150  
 Email: [info@kclastute.com](mailto:info@kclastute.com)