



| MARKET SUMMARY | | |
|------------------------------|--------------|---------|
| NEPSE | 1,256.04 | -0.35% |
| Total Turnover (Rs.) | 540,529,465 | -19.34% |
| Share Volume | 2,216,493 | -75.33% |
| Total Transactions | 7,698 | -1.86% |
| Total Market Cap. (Rs. Mill) | 1,562,985.91 | -0.36% |
| Floated Market Cap (Rs.Mill) | 556,286.96 | -0.48% |

| | | |
|-------------------------|--------|---|
| MARKET CAP TO GDP RATIO | 51.97% | ▼ |
|-------------------------|--------|---|

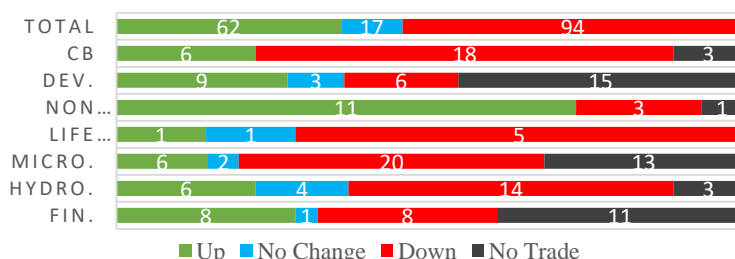
| WEIGHTAGE ON MARKET CAP | |
|------------------------------|--------|
| Commercial Banks | 53.05% |
| Development Bank | 5.15% |
| Finance | 2.97% |
| Microfinance | 5.87% |
| Life Insurance | 7.48% |
| Non-life Insurance | 5.73% |
| Hydropower | 5.87% |
| Hotel | 1.74% |
| Manufacturing And Processing | 4.21% |
| Trading | 0.10% |
| Others | 7.83% |
| NTC | 6.69% |

| | |
|-----------------------------|---------------------|
| Top Gainers | SMFBS, DHPL, RRHP |
| Top Losers | JSLBB, SLBBL, MLBBL |
| Top Stocks by Shares Traded | CBL, MEGA, CCBL |
| Top Stocks by Transactions | CBL, MEGA, CCBL |
| Top Stocks by Turnover | CBL, MEGA, NBL |
| Top Brokers by Turnover | 49, 44, 34 |

| NEPSE STATISTICS | |
|--------------------|--------|
| Average Return | 16.79% |
| Standard Deviation | 17.05% |
| Standard Error | 1.13% |
| Skewness | 0.46 |
| Kurtosis | 3.46 |

Notes: NEPSE Index from 2069.04.01 – 2076.03.22. Avg. annual trade day's 229. Lognormal return is used. Skewness shows market is asymmetrically skewed to right, indicating average return of 16.79% more affected by outliers. Further excess kurtosis shows fat tail and more peaked distribution than normal.

TRADED SCRIPTS STATS



MARKET OVERVIEW

NEPSE opened the week's trade with a red candle, reporting a loss of 4.45 points and closing at 1256.04 level on Sunday. Market made the down turn from the beginning, making the high of 1263.83 and falling to low 1255.01 level. Turnover, Volume and Transaction all fell by 19.34%, 75.33% and 1.86% respectively. The trade of 173 scripts led to a turnover of Rs. 54 crores. Sensitive, Float and Sensitive Float closed Red with fall of 1.11, 0.44 and 0.51 points respectively.

Under sub-indices, Non-life Insurance, Development Bank, Hotels, Finance and Manu. & Pro. closed Green, gaining 38.32, 3.15, 6.84, 2.69 and 11.07 points respectively. On the other side, Life Insurance, Microfinance, Banking, Hydropower lost 50.24, 9.07, 6.7, 3.16 points respectively.

DHPL, MPFL, and RRHP outperformed its respective sector while JSLBB, SLBBL and KKHC underperformed the most in comparison to their respective sectors. SMFDB, DHPL and NBB were the most volatile stocks. KSBBL, MPFL and NAGRO traded closest to their 52 week high whereas PMHPL, BARUN, and FOWAD traded closest to their 52 week low.

SMFBS and DHPL hit positive circuit, price rising by 9.86% and 9.23% respectively. JSLBB hit the negative circuit, price falling by 11.3%.

MAJOR MARKET NEWS

- ❏ CZBIL issued a notice informing to acquire SBBLJ; At preliminary swap ratio is 1:0.9, which will be finalized based on DDA report.
- ❏ 752nd BoD meeting of NCCB proposed to issue 15.89% Bonus shares and 0.83% cash dividend for tax purpose for its FY 2074/75; Post Bonus issue, the paid up capital of the bank to reach Rs.8.13 arba
- ❏ SEBON has added 5 lakhs units IPO proposal of Emerging Nepal Limited in its pipeline.
- ❏ NEPSE has listed 20,74,000 units IPO shares of Infinity Laghubitta.; Trading to start from Monday
- ❏ Price adjusted for 84% Bonus share of PIC.
- ❏ NEPSE has listed 35,77,132 units (13.5%) Bonus share of NLICL.
- ❏ Trading of Shares of GBIME, JBNL, KBBL and SLBS has been halted by NEPSE on account of M&A procedures.
- ❏ NEPSE has fully integrated e-payments systems of NCHL i.e. NCHL-IPS and ConnectIPS within its TMS for online share trading.



Under Watch: Monetary Policy for FY 2076/77
– likely date 27th Asadh

Major Events (Today)

- 400,000 units IPO issue of Adhikhola Laghubitta Bittiya Sanstha Limited
- 132,600 units IPO issue of Ghodighoda Laghubitta Bittiya Sanstha Limited
- Auction:** RMDC is selling its 323,525 unit promoter shares till 16th Shrawan, 2076.
- Right Issue:** 100% Right Shares of JSLBB is open for issuance till 15th Shrawan, 2076.

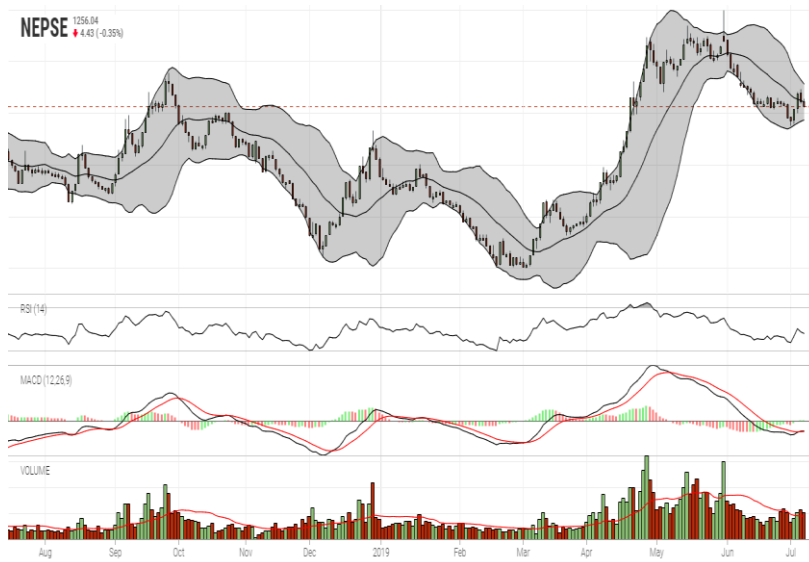
Upcoming IPO: 7,672,210 units IPO Issue of Himal Dolakha Hydropower Company Ltd. from 25th to 29th Asadh.

| GLOBAL INDICES | | |
|----------------|-----------|---------|
| SENSEX | 39,513.39 | -394.67 |
| NIFTY | 11,811.15 | -135.60 |
| S&P 500 | 2,990.41 | -5.41 |
| DJIA | 26,922.12 | -43.88 |
| NIKKEI 225 | 21,746.38 | +43.93 |

| | Stock Name | Ticker | LTP |
|---------------|---------------------------------|--------|--------|
| UNDER PRICED | Prime Commercial Bank Ltd. | PCBL | 275.00 |
| | Nepal Bank Ltd. | NBL | 339.00 |
| | Kumari Bank Ltd. | KBL | 220.00 |
| | Nepal Credit and Commerce Bank | NCCB | 244.00 |
| | Prabhu Bank Limited | PRVU | 266.00 |
| FAIRLY PRICED | Janata Bank Nepal Limited | JBNL | 214.00 |
| | Global IME Bank Limited | GBIME | 295.00 |
| | Siddhartha Bank Limited | SBL | 320.00 |
| | Sunrise Bank Limited | SRBL | 249.00 |
| | Century Commercial Bank Ltd. | CCBL | 182.00 |
| OVER PRICED | Standard Chartered Bank Limited | SCB | 661.00 |
| | Everest Bank Limited | EBL | 650.00 |
| | Nepal SBI Bank Limited | SBI | 466.00 |
| | Himalayan Bank Limited | HBL | 545.00 |
| | Nabil Bank Limited | NABIL | 790.00 |

Notes: # Above pricing is performed by averaging the prices derived as per P/E, P/B and 180 days closing averages. Based on Published Q3 75/76 data.
Harmonic Mean of industries is carried for Pricings.

NEPSE TECHNICAL OUTLOOKS



| | |
|--|-------------|
| Date / Time | 22.03.2076 |
| Close | 1256.04 |
| Open | 1260.95 |
| High | 1263.83 |
| Low | 1255.01 |
| Turnover | 540,529,465 |
| Bollinger Bands Top Bollinger Bands (20,2,ma,y) | 1277.90 |
| Bollinger Bands Median Bollinger Bands (20,2,ma,y) | 1260.53 |
| Bollinger Bands Bottom Bollinger Bands (20,2,ma,y) | 1243.16 |
| RSI (14) | 44 |
| MA (20, Volume, ma, 0) | 442m |
| MACD (12,26,9) | -7 |
| Signal macd (12,26,9) | -7 |
| macd (12,26,9)_hist | 0 |

Indicators used: Bollinger Bands, MACD, RSI, Moving Average (20 days) Volume



Disclaimers: This MARKET SUMM is prepared to timely update the market participants about the Nepalese stock market before the Market opens for the day. The information and data herein should not be construed as an investment advice or recommendation. Should the investors choose to act based on this report, it shall be entirely at their own risk and KCL Astute shall not be liable, for any loss or damages incurred thereby. Unless otherwise specifically stated, the above data concerns the previous trading day.

KCL Astute Capital Limited

Address: Sundar Bhawan, Hattisar, Kathmandu

Contact No. 977-1-4429149 | 4429150,

Email: info@kclastute.com