



MARKET SUMMARY		
NEPSE	1,247.35	-0.69%
Total Turnover (Rs.)	591,053,812	+9.35%
Share Volume	2,910,153	+31.30%
Total Transactions	7,244	-5.90%
Total Market Cap. (Rs. Mill)	1,552,165.99	-0.69%
Floated Market Cap (Rs.Mill)	552,228.28	-0.73%

MARKET CAP TO GDP RATIO	51.61% ▼
-------------------------	----------

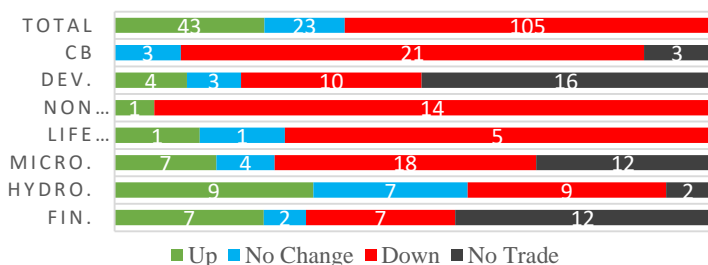
WEIGHTAGE ON MARKET CAP	
Commercial Banks	52.94%
Development Bank	5.17%
Finance	2.99%
Microfinance	5.93%
Life Insurance	7.45%
Non-life Insurance	5.69%
Hydropower	5.92%
Hotel	1.76%
Manufacturing And Processing	4.22%
Trading	0.10%
Others	7.84%
NTC	6.69%

Top Gainers	ILBS, AKJCL, AKPL
Top Losers	JSLBB, RRHP, BFC
Top Stocks by Shares Traded	PRVUPO, CBL, GBBLPO
Top Stocks by Transactions	SMFBS, CBL, PRVU
Top Stocks by Turnover	PRVUPO, CBL, STC
Top Brokers by Turnover	45, 42, 13

NEPSE STATISTICS	
Average Return	16.68%
Standard Deviation	17.05%
Standard Error	1.13%
Skewness	0.46
Kurtosis	3.46

Notes: NEPSE Index from 2069.04.01 – 2076.03.23. Avg. annual trade day's 229. Lognormal return is used. Skewness shows market is asymmetrically skewed to right, indicating average return of 16.68% more affected by outliers. Further excess kurtosis shows fat tail and more peaked distribution than normal.

### TRADED SCRIPTS STATS



### MARKET OVERVIEW

Market reported a fall of 8.70 points on Monday. After the consecutive fall for three days, NEPSE closed at 1247.35 on the second day of the week. Throughout the day, market experienced fall in its index going as low as 1245.62. However, a brief upside in the market pulled the index to 1257.57 level. Other indicators like Turnover and Volume rose by 9.35% and 31.30% respectively. Whereas, transaction fell by 5.90% on the same day. The trade of 171 scripts led to a turnover of Rs. 59.11 crores. Sensitive, Float and Sensitive Float closed Red with fall of 1.56, 0.67 and 0.53 points respectively.

Most of the sub-indices closed red at the end of the day. Indices like Hydropower and Mutual Fund closed Green, gaining 2.4 and 0.05 points respectively. On the other side, Life Insurance, followed by Non-Life Insurance and Banking lost 64.08, 63.22 and 9.49 points respectively.

DHPL, SPDL, and SEF outperformed its respective sector while JSLBB, RRHP and SIFC underperformed the most in comparison to their respective sectors. SMFBS, HURJA and JSLBB were the most volatile stocks. SMFBS, KSBBL and RMDC traded closest to their 52 week high whereas MLBBL, HGI and RADHI traded closest to their 52 week low.

*ILBS hit positive circuit, price rising by 10%. JSLBB hit the negative circuit, price falling by 9.92%.*

### MAJOR MARKET NEWS

- 42.75% bonus shares of Suryodaya Laghubitta is listed in NEPSE for trading.
- CBIL Capital allots the NFO issue of Citizen Mutual Fund-II worth Rs. 15 crores to general public.
- NEPSE set the trading range for the first transaction of ILBS at Rs. 103.81 to Rs. 311.53. Within first day of transaction open, the stock hit positive circuit.
- The 10% shares of NABILP is fully converted to NABIL.
- IPO of Ghodighoda is oversubscribed by more than 30.10 times on Monday.
- CZBIL is on the verge of acquiring SBBLJ. The preliminary swap ratio of 1:0.9 is determined and the trading of SBBLJ is halted for this purpose.
- IPO of Sabaiko Laghubitta worth Rs. 5.3 crores is set to open for issuance from 1<sup>st</sup> Shrawan, 2076.



**Under Watch: Monetary Policy for FY 2076/77**  
– likely date 27<sup>th</sup> Asadh

### Major Events (Today)

- 400,000 units IPO issue of Adhikhola Laghubitta Bittiya Sanstha Limited.
- 132,600 units IPO issue of Ghodighoda Laghubitta Bittiya Sanstha Limited.
- Auction:** RMDC is selling its 323,525 unit promoter shares till 16<sup>th</sup> Shrawan, 2076.
- Right Issue:** 100% Right Shares of JSLBB is open for issuance till 15<sup>th</sup> Shrawan, 2076.
- Right Issue:** 865% Right Shares of MPFL is open for issuance till 26<sup>th</sup> Shrawan, 2076.

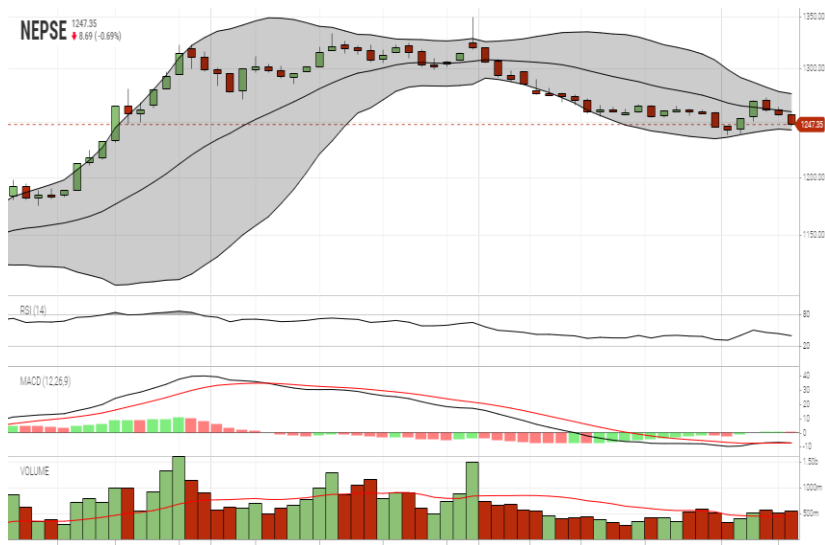
**Upcoming IPO: 7,672,210 units IPO Issue of Himal Dolakha Hydropower Company Ltd. from 25<sup>th</sup> to 29<sup>th</sup> Asadh.**

GLOBAL INDICES		
SENSEX	38,720.57	-792.82
NIFTY	11,558.60	-252.55
S&P 500	2,990.41	-5.41
DJIA	26,922.12	-43.88
NIKKEI 225	21,534.35	-212.03

	Stock Name	Ticker	LTP
UNDER PRICED	Nepal Bank Ltd.	NBL	336.00
	Prime Commercial Bank Ltd.	PCBL	275.00
	Kumari Bank Ltd.	KBL	218.00
	Nepal Credit and Commerce Bank	NCCB	242.00
	Prabhu Bank Limited	PRVU	260.00
FAIRLY PRICED	Janata Bank Nepal Limited	JBNL	214.00
	Global IME Bank Limited	GBIME	295.00
	Civil Bank Limited	CBL	158.00
	Siddhartha Bank Limited	SBL	320.00
	Century Commercial Bank Ltd.	CCBL	179.00
OVER PRICED	Standard Chartered Bank Limited	SCB	655.00
	Everest Bank Limited	EBL	645.00
	Nepal SBI Bank Limited	SBI	462.00
	Himalayan Bank Limited	HBL	534.00
	Nabil Bank Limited	NABIL	787.00

**Notes:** # Above pricing is performed by averaging the prices derived as per P/E, P/B and 180 days closing averages. Based on Published Q3 75/76 data.  
# Harmonic Mean of industries is carried for Pricings.

### NEPSE TECHNICAL OUTLOOKS



Date / Time	23.03.2076
Close	1247.35
Open	1256.15
High	1257.57
Low	1245.62
Turnover	591,053,812
Bollinger Bands Top Bollinger Bands (20,2,ma,y)	1275.89
Bollinger Bands Median Bollinger Bands (20,2,ma,y)	1259.11
Bollinger Bands Bottom Bollinger Bands (20,2,ma,y)	1242.32
RSI (14)	40
MA (20, Volume, ma, 0)	442m
MACD (12,26,9)	-7
Signal macd (12,26,9)	-7
macd (12,26,9)_hist	0

Indicators used: Bollinger Bands, MACD, RSI, Moving Average (20 days) Volume



*Disclaimers: This MARKET SUMM is prepared to timely update the market participants about the Nepalese stock market before the Market opens for the day. The information and data herein should not be construed as an investment advice or recommendation. Should the investors choose to act based on this report, it shall be entirely at their own risk and KCL Astute shall not be liable, for any loss or damages incurred thereby. Unless otherwise specifically stated, the above data concerns the previous trading day.*

### KCL Astute Capital Limited

Address: Sundar Bhawan, Hattisar, Kathmandu

Contact No. 977-1-4429149 | 4429150,

Email: [info@kclastute.com](mailto:info@kclastute.com)