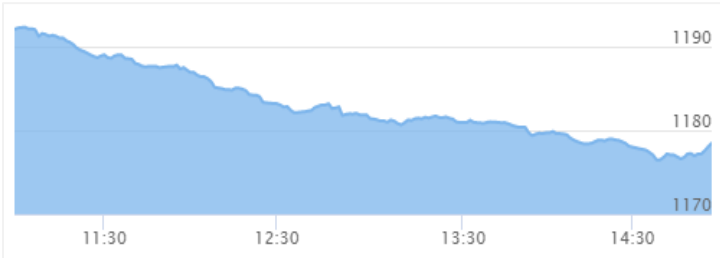




NEPSE Index – Sunday



MARKET SUMMARY

NEPSE	1,178.46	-1.06%
Total Turnover (Rs.)	305,310,719	5.22%
Share Volume	1,173,488	22.51%
Total Transactions	5,640	-2.71%
Total Market Cap. (Rs. Mill)	1,496,716.23	-1.05%
Floated Market Cap (Rs. Mill)	540,088.81	-0.97%

MARKET CAP TO GDP RATIO **49.76%** ▼

WEIGHTAGE ON MARKET CAP

Commercial Banks	53.16%
Development Bank	5.35%
Finance	2.97%
Microfinance	6.53%
Life Insurance	6.92%
Non-life Insurance	5.29%
Hydropower	6.48%
Hotel	1.72%
Manufacturing And Processing	4.03%
Trading	0.11%
Others	7.43%
NTC	6.40%

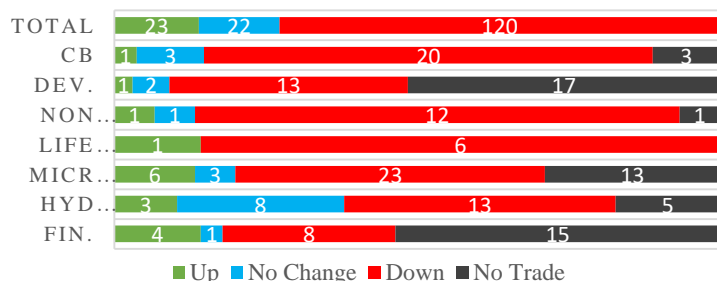
Top Gainers	AKBSL, JFL, RADHI
Top Losers	PPCL, UPCL, SINDU
Top Stocks by Shares Traded	PRVUPO, PRVU, KBL
Top Stocks by Transactions	RHPL, SJCL, SABS
Top Stocks by Turnover	PRVUPO, NICA, PRVU
Top Brokers by Transactions	34, 29, 44

NEPSE STATISTICS

Average Return	15.45%
Standard Deviation	16.90%
Skewness	0.47
Kurtosis	3.54

Notes: NEPSE Index from 2069.04.01 – 2076.05.22. Avg. annual trade day's 229. Lognormal return is used. Skewness shows market is asymmetrically skewed to right, indicating average return of 15.45% more affected by outliers. Further excess kurtosis shows fat tail and more peaked distribution than normal.

TRADED SCRIPTS STATS



MAJOR MARKET NEWS

- Market opened the week's trade with a bearish candle. NEPSE lost 12.61 points and closed at 1178.46 level.
- Sensitive, Float and Sensitive Float Index all lost 2.77, 0.86 and 0.81 points respectively.
- AKBSL hit positive circuit, gaining 9.90%.
- All sectors reported loss in its sub-indices with Non-Life Insurance followed by Life Insurance losing by most points of 102.29 and 85.44 points respectively.
- KBL has proposed 10% bonus shares and cash dividend for tax purposes to its shareholders. The book closure date for AGM is set from 29th Bhadra to 11th Ashwin.
- RSDC has proposed 6% bonus shares and 10% cash dividend to its shareholders.
- JFL has proposed 22% bonus shares and cash dividend for tax purposes to its shareholders.
- NCDB is calling its shareholders to attend SGM on 7th Ashwin. The main agenda of the SGM is to discuss the acquisition of NCDB by Tinnu Mission Development Bank Limited. The swap ratio is determined at 1:1 for the acquisition process.
- CZBIL is calling its shareholders to attend its 13th AGM on 10th Ashwin. The main agenda of the AGM is to distribute 3% bonus shares and 12% cash dividend to its shareholders.
- Chautari Laghubitta has proposed 10.89% cash dividend and 7% bonus shares to its shareholders.
- NRB allots the auctioned shares of NEPSE. Only 57.84% shares were subscribed and the remaining will be put up for auction in the near future.
- WMOBI allots 100% right shares to its shareholders. 87.81% of the shares is subscribed, the remaining unsubscribed portion is soon to be sold via auction.
- BARUN published Q4 financial report. The company reported net profit of Rs. 5.21 lacs. EPS and BVPS stands at Rs. 10.15 and 110.15 respectively.

Today's Events (Monday)

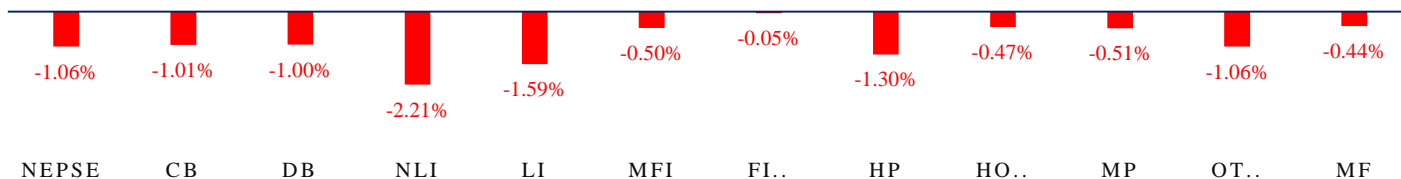
- 20th and 21st AGM of NCCB; 15.89% Bonus Shares
- Right Shares Alert:** MNBBL is issuing 20% Right
- Right Shares Alert:** SLICL is issuing 70% Right
- Right Shares Alert:** GILB is issuing 100% Right. Last Day.
- Right Shares Alert:** UIC is issuing 240% Right
- Auction Alert:** BFC is auctioning its 557,674.57 units promoter shares and 244,549.90 units ordinary shares via auction.
- Auction Alert:** NLBBL is auctioning its 87,300 units promoter via auction.



MARKET SUMM...

23rd Bhadra, 2076 Monday

INDICES % CHANGE

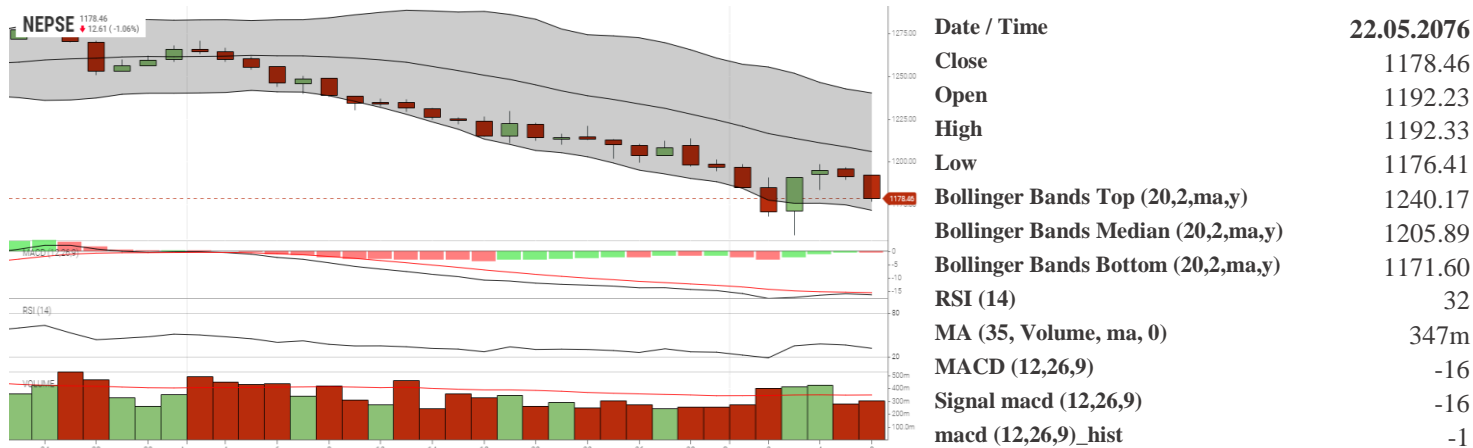


Volatile Stocks			Stock Movement			Highest Volume – Day 1 (Week 9)		
RADHI	(141)	8.03%	AKBSL	(444)	Highest till now	PRVUPO	(162)	323,951 units
NLICL	(506)	7.86%	GGBSL	(235)	Highest till now	PRVU	(264)	48,952 units
AKBSL	(444)	7.77%	API	(113)	Lowest till now	KBL	(203)	45,770 units

Sectorial Outlooks		Stock Pick...	
Bullish	Bearish	Up Pick	Down Pick
-	Banking	JFL	NLICL
-	Non-Life Insurance	RADHI	PPCL

Financial Metrics										
S.N.	Ticker	LTP	EPS	BVPS	P/E	P/B	ROE	NPL	CAR	Remarks
1	UPCL	78	1.37	101.19	56.93	0.77	-	-	-	-
1	SIC	545	27.62	191.17	19.73	2.85	15.57%	-	-	-
2	JSLBB	945	73.73	327.01	12.82	2.89	26.99%	2.23%	8.37%	-
3	NIL	391	29.22	195.90	13.38	2.00	16.12%	-	-	-
5	BFC	93	9.92	87.53	9.38	1.06	17.56%	18.46%	17.17%	-

NEPSE TECHNICAL OUTLOOKS



Indicators used: Bollinger Bands, MACD, RSI, Moving Average (35 days) Volume

Global Indices	SENSEX	NIFTY	S&P 500	DJIA	NIKKEI 225
	36,929.22 (-0.14%)	10,930.65 (-0.14%)	2,978.71 (+0.09%)	26,797.46 (+0.26%)	21,293.50 (+0.44%)



Disclaimers: This MARKET SUMM is prepared to timely update the market participants about the Nepalese stock market before the Market opens for the day. The information and data herein should not be construed as an investment advice or recommendation. Should the investors choose to act based on this report, it shall be entirely at their own risk and KCL Astute shall not be liable, for any loss or damages incurred thereby. Unless otherwise specifically stated, the above data concerns the previous trading day.

KCL Astute Capital Limited

Address: Sundar Bhawan, Hattisar, Kathmandu

Contact No. 977-1-4429149 | 4429150

Email: info@kclastute.com