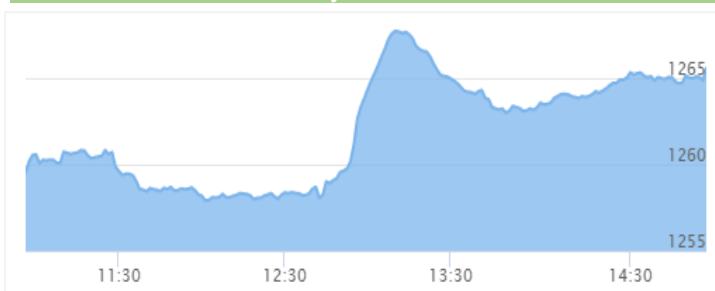




NEPSE Index - Wednesday



MARKET SUMMARY

NEPSE	1,265.57	+0.49%
Total Turnover (Rs.)	357,836,185	+21.59%
Share Volume	1,261,590	+24.44%
Total Transactions	6,300	+22.52%
Total Market Cap. (Rs. Mill)	1,576,450.52	+0.49%
Floated Market Cap (Rs. Mill)	562,867.58	+0.49%

MARKET CAP TO GDP RATIO 52.42% ▲

WEIGHTAGE ON MARKET CAP

Commercial Banks	53.21%
Development Bank	5.15%
Finance	2.91%
Microfinance	6.37%
Life Insurance	7.22%
Non-life Insurance	5.62%
Hydropower	5.81%
Hotel	1.74%
Manufacturing And Processing	4.12%
Trading	0.09%
Others	7.74%
NTC	6.64%

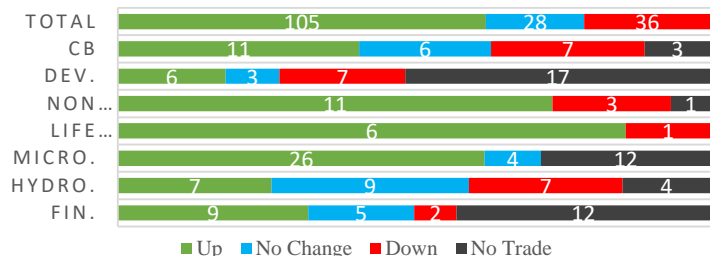
Top Gainers	CLBSL, VLBS, LLBS
Top Losers	UNHPL, RADHI, SFFIL
Top Stocks by Shares Traded	NBL, CBL, PRVU
Top Stocks by Transactions	ILBS, UIC, ALBSL
Top Stocks by Turnover	NBL, ADBL, PRVU
Top Brokers by Transactions	17, 34, 33

NEPSE STATISTICS

Average Return	16.71%
Standard Deviation	16.99%
Skewness	0.46
Kurtosis	3.50

Notes: NEPSE Index from 2069.04.01 – 2076.04.15. Avg. annual trade day's 229. Lognormal return is used. Skewness shows market is asymmetrically skewed to right, indicating average return of 16.71% more affected by outliers. Further excess kurtosis shows fat tail and more peaked distribution than normal.

TRADED SCRIPTS STATS



MAJOR MARKET NEWS

- NEPSE continued its uptrend, posted gain of 6.20 points, closed at 1265.57.
- Sensitive, Float and Sensitive Float Index rose by 1.1, 0.45 and 0.36 points respectively.
- Microfinance Indices gained the most, rising by 3.49% ; many MFIs scripts hit the positive circuit on the day.
- CDS and Clearing Ltd. to determine the base price for CGT calculation for share bought before FY 76/77, Highest and lowest price of script between 2058 BS till 2076 BS (Asadh end) to be used for computation of average price; For transaction from FY 76/77, actual purchase price to be used for CGT computation.
- MMFDB Q4 75/76 y-o-y Net profit rose by 106.69% to Rs.2.97 crores; EPS Rs.47.74 BVPS Rs.174.45
- VLBS (572) Q4 75/76 y-o-y Net profit rose by 149.87% to Rs.6.23 crores; EPS Rs.31.99 BVPS Rs.143.87
- HATH Q4 75/76 y-o-y Net profit fell by 56.17% to Rs.2.48 crores; EPS Rs.8.28 BVPS Rs.74.42
- NIBL Samridhi Fund-1 (NIBSF1) Asadh end NAV decreased to Rs.10.69 from Rs.10.75;
- NIBL Pragati Fund (NIBLPF) Asadh end NAV decreased to Rs.8.28 from Rs.8.34;
- NIBL Sahabhagita Fund, an open end fund, Asadh end NAV Rs.9.96; Net loss reported Rs.8.65 lakhs
- Global IME Samunnat Scheme-1 (GIMES1) Asadh end NAV decreased to Rs.8.92 from Rs.9.07;
- NMB Sulav Investment Fund-1 (NMBSF-1) Asadh end NAV remained unchanged at Rs.11.92;
- Nabil Equity Fund (NEF) Asadh end NAV decreased to Rs.9.02 from Rs.9.08;
- Nabil Balance Fund II (NBF2) Asadh end NAV stood Rs.10.04;
- Citizens Mutual Fund-1 (CMF1) Asadh end NAV increased to Rs.10.35 from Rs.10.34;
- Citizens Mutual Fund-2 (CMF2) Asadh end NAV stood Rs.9.92
- WMBF has been declared as crisis-ridden institution by NRB, after 6 years.

Major Events (Today)

- NFO Alert:** NMB 50 worth Rs.1.20 billion (120 million units at Rs.10 each). *Issue date extended.*
- NFO Alert:** NIC ASIA Balance Fund worth Rs.1.25 billion (125 million units at Rs.10 each). *Extended*

New Fund Offerings (Upcoming)

	Schemes	Units	@ Rs.	Open
1	Siddhartha Investment Growth Scheme-2	140 mil.	10	23/4/76

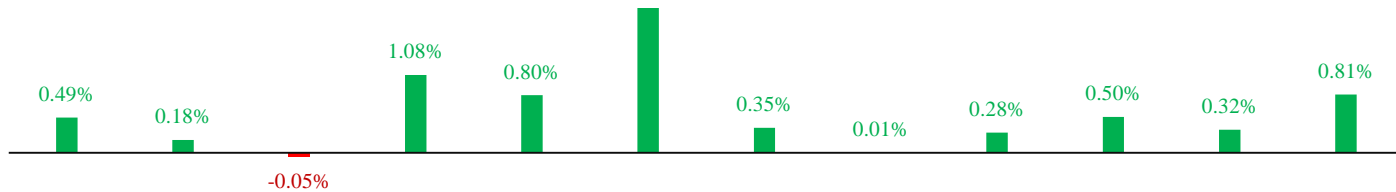
Fundamental Watch: Quarter 4 2075/76 Unaudited Reports



MARKET SUMM...

16th Asadh, 2076 Thursday

INDICES % CHANGE



NEPSE CB DB NLI LI MFI FI.. HP HO.. MP OT.. MF

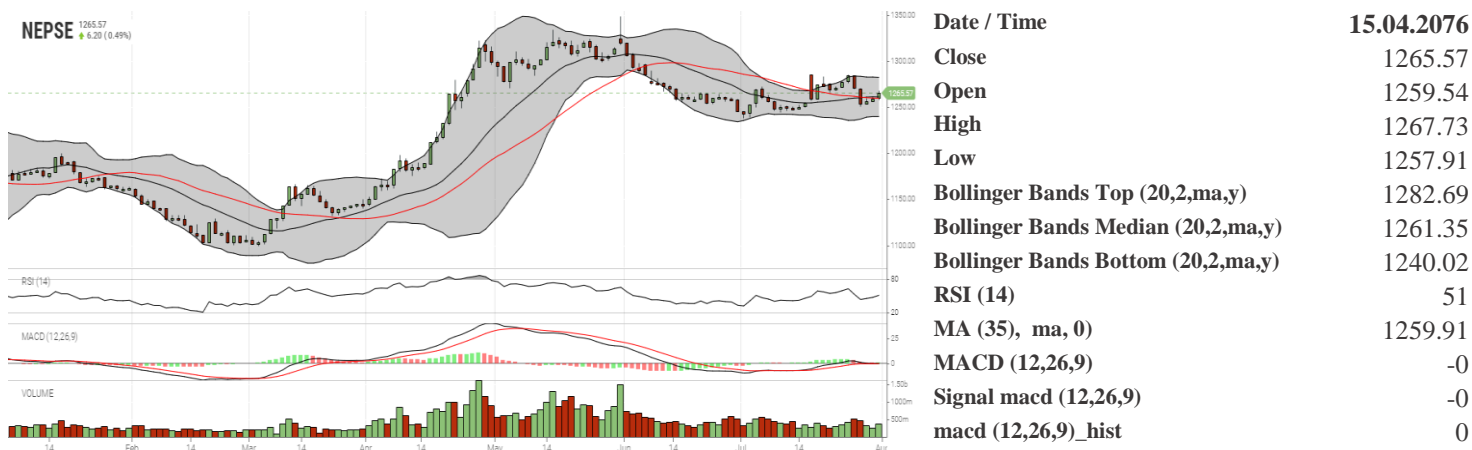
Volatile Stock			Stock Movement			Highest Volume – Day 4 (Week 3)	
SLBSL	(672)	13.6%	GLBSL	(492)	Highest till now	PRVU	(277) 269,019 units
GMFBS	(609)	13.2%	NAGRO	(718)	Highest till now	CBL	(154) 207,718 units
ILBS	(500)	11.53%	JOSHI	(75)	Lowest till now	NBL	(340) 192,966 units

Sectorial Outlooks		Stock Pick...	
Bullish	Bearish	Up Pick	Down Pick
Microfinance	Mutual Fund	PRIN	MPFL
Non-Life Insurance	Finance	NLG	SFFIL

Financial Metrics										
S.N.	Ticker	LTP	EPS	BVPS	P/E	P/B	ROE	NPL	CAR	Remarks
1	KMCDB	699	19.25	162.69	36.31	4.30	12.46	1.60%	8.49%	Trade halted; M&A - JLBS
2	GMFBS	609	29.45	116.57	20.68	5.22	34.66%	0.69%	14.11%	
3	LLBS	793	45.84	201.11	17.30	3.94	25.61%	1.26%	13.31%	-
4	HATH	116	8.28	74.42	14.01	1.56	11.18%	2.46%	40.88%	Trade halted; M&A - GBIME
5	SMATA	1268	42.32	238.87	30.36	5.38	25.21%	0.98%	10.17%	-

Note: If asterisk sign (*) financial metrics denotes Quarter 3 75/76 data, otherwise financial metrics are of Quarter 4 75/76 data.

NEPSE TECHNICAL OUTLOOKS



Indicators used: Bollinger Bands, MACD, RSI, Moving Average (35 days) Volume

Global Indices	SENSEX	NIFTY	S&P 500	DJIA	NIKKEI 225
	37,481.12 (+0.22%)	11,118.00 (+0.29%)	3,012.00 (-0.04%)	27,197.77 (-0.00%)	21,521.53 (-0.86%)



Disclaimers: This MARKET SUMM is prepared to timely update the market participants about the Nepalese stock market before the Market opens for the day. The information and data herein should not be construed as an investment advice or recommendation. Should the investors choose to act based on this report, it shall be entirely at their own risk and KCL Astute shall not be liable, for any loss or damages incurred thereby. Unless otherwise specifically stated, the above data concerns the previous trading day.

KCL Astute Capital Limited

Address: Sundar Bhawan, Hattisar, Kathmandu

Contact No. 977-1-4429149 | 4429150,

Email: info@kclastute.com