



MARKET SUMMARY		
NEPSE	1284.59	-0.36%
Total Turnover (Rs.)	588,822,625	-17.70%
Share Volume	1,859,248	-17.46%
Total Transactions	8,081	-18.69%
Total Market Cap. (Rs. Mill)	1,596,434.14	-0.36%
Floated Market Cap (Rs.Mill)	558,167,.91	-0.39%

MARKET CAP TO GDP RATIO	53.08%	▼
-------------------------	--------	---

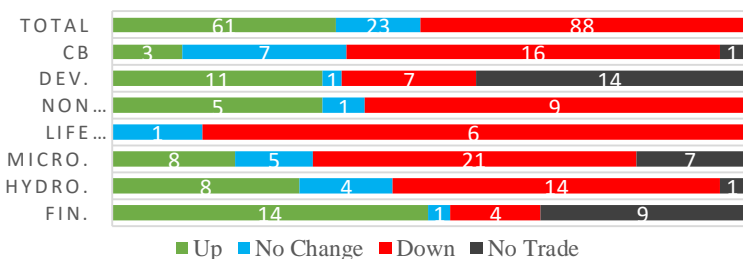
WEIGHTAGE ON MARKET CAP	
Commercial Banks	52.63%
Development Bank	5.09%
Finance	3.07%
Microfinance	5.81%
Life Insurance	7.66%
Non-life Insurance	5.98%
Hydropower	5.85%
Hotel	1.77%
Manufacturing And Processing	4.24%
Trading	0.09%
Others	7.81%
NTC	6.70%

Top Gainers	CORBL, GFCL, WMBF
Top Losers	PPCL, CLBSL, MSLB
Top Stocks by Shares Traded	KBBL, PRVU, SHIVM
Top Stocks by Transactions	SHIVM, PPCL, UPPER
Top Stocks by Turnover	SHIVM, KBBL, NBL
Top Brokers by Turnover	45, 42, 58

NEPSE STATISTICS	
Average Return	17.33%
Standard Deviation	17.13%
Standard Error	1.13%
Skewness	0.45
Kurtosis	3.42

Notes: NEPSE Index from 2069.04.01 – 2076.02.23. Avg. annual trade day's 229. Lognormal return is used. Skewness shows market is asymmetrically skewed to right, indicating average return of 17.33% more affected by outliers. Further excess kurtosis shows fat tail and more peaked distribution than normal.

TRADED SCRIPTS STATS



MARKET OVERVIEW

NEPSE closed the weekend trade with a fall of 4.69 points, closing at 1,284.59 level. Trading was halted for more than hours, following the Technical problems in the NEPSE in the early trading session. This resulted the weaker market participants on the day, evidence by notable drop in Turnover, Share volume and Total transaction by 17.7%, 17.46% and 18.69% respectively. Throughout the day, market made the high of 1296.80 and low of 1284.59. Sensitive, Float and Sensitive Float also decreased by 0.97, 0.36 and 0.38 points respectively.

Under Sub-indices, Finance, Development Banks, Hotels and Microfinance reported a gain of 18.55, 3.63, 3.46 and 1.54 points respectively. Remaining sub-indices reported a loss for the day with Life Insurance, Manu. & Pro. and Non-life insurance losing the most by 85.24, 14 and 11.31 points each. Banking fell by 5.62 points and Microfinance lost 5.06 points.

CORBL, KRBL and GFCL outperformed its respective sectors by the most whereas PPCL, UFL and CLBSL underperformed its respective sectors by their most. SPARS, NTC and CEFL were the most volatile stocks. MSLB, SLBBL and SMB traded closest to their 52 week high low while SINDU, KRBL and CFCL traded closest to their 52 week high.

CORBL, GFCL, WMBF and KRBL hit positive circuits, gaining 9.65%, 9.60%, 9.52% and 9.40% respectively.

MAJOR MARKET NEWS

- ☒ Sunrise Bank appointed Mr. Niraj Kumar Shrestha as its new CEO.
- ☒ AMFI and CHLBS to go into Merger; swap ratio - 1:1; name of merged entity - Aarambha Chautari Laghubitta Bittiya Sanstha Ltd.
- ☒ PCBL to acquire to KNBL; swap ratio undisclosed; MoU signed for acquiring Lalitpur Finance (LFC) as well.
- ☒ NEPSE has listed 1,10,000 units (20%) Right Shares of UMB.
- ☒ SIC's 22nd AGM to be held on Asar 13 ; Main Agendas: 86% Bonus
- ☒ SIL's 17th AGM to be held on 13th Asar ; Main Agenda: Endorse 15.484% bonus

5 Commercial Banks – GBIME, NIB, NICA, NMB and SRBL classified under Class 'A' as per NEPSE 3rd Quarter Classification of Listed Companies. Remaining all banks classified under Class 'Z'.



Major Events (Today)

- 8th & 9th AGM of RLFL; 12% bonus and 2.63% Cash dividend.
- NFO Alert:** NIBL Sahabagita Fund, an Open End MF worth Rs.12.5 crores (12.5 million at Rs.10 each) has been extended upto 16th Ashad, after the issue remained undersubscribed by more than 50% till 22nd Jestha;
- NFO Alert:** Issue of Citizens Mutual Fund-2 (CMF II), 7-years closed end fund worth Rs.1 billion (100 million units at Rs.10) extended till 8th Asadh, 2076 after undersubscription.
- Himal Dolkha Hydropower Company Ltd. issuing 16 lakhs units IPO to the locals of project affected area of Ilam district.

GLOBAL INDICES

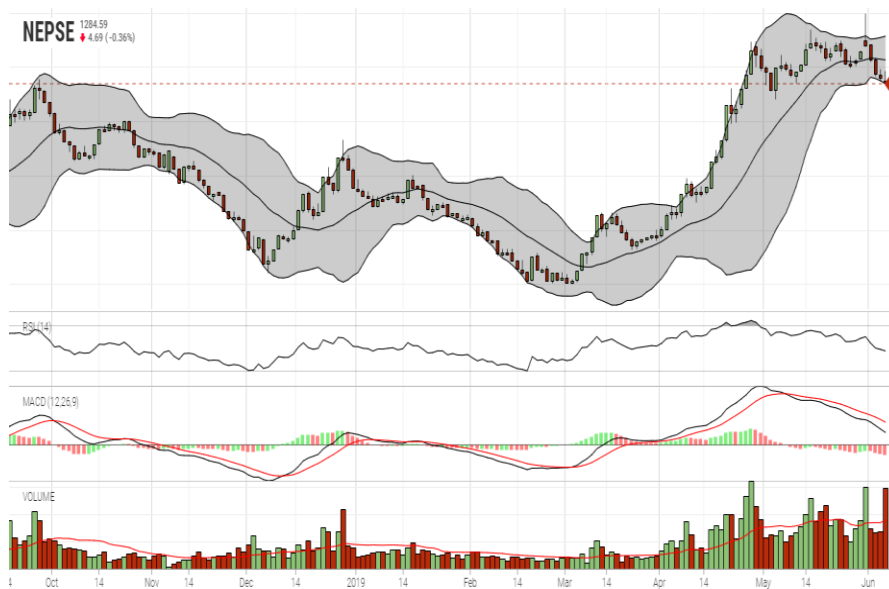
SENSEX	39,615.90	+86.18
NIFTY	11,870.65	+26.90
S&P 500	2,873.34	+29.85
DJIA	25,983.94	+263.28
NIKKEI 225	20,884.71	+110.67

	Stock Name	Ticker	LTP
UNDER PRICED	Nepal Bank Ltd.	NBL	326.00
	Kumari Bank Ltd.	KBL	216.00
	Civil Bank Ltd.	CBL	147.00
	Prime Commercial Bank Ltd.	PCBL	300.00
	Nepal Bangladesh Bank Ltd.	NBB	222.00
FAIRLY PRICED	Laxmi Bank Limited	LBL	219.00
	Sunrise Bank Limited	SRBL	254.00
	Global IME Bank Ltd.	GBIME	302.00
	Mega Bank Nepal Limited	MEGA	199.00
	Agricultural Development Bank Ltd.	ADBL	413.00
OVER PRICED	Standard Chartered Bank Limited	SCB	673.00
	Everest Bank Limited	EBL	667.00
	Himalayan Bank Limited	HBL	565.00
	Nepal SBI Bank Limited	SBI	472.00
	Nabil Bank Limited	NABIL	828.00

Notes: # Above pricing is performed by averaging the prices derived as per P/E, P/B and 180 days closing averages. Based on Published Q3 75/76 data.

Harmonic Mean of industries is carried for Pricings.

NEPSE TECHNICAL OUTLOOKS



Date / Time	23.06.2076
Close	1284.59
Open	1296.42
High	1296.80
Low	1284.59
Turnover	588,822,625
Bollinger Bands Top Bollinger Bands (20,2,ma,y)	1328.47
Bollinger Bands Median Bollinger Bands (20,2,ma,y)	1306.56
Bollinger Bands Bottom Bollinger Bands (20,2,ma,y)	1284.64
RSI (14)	47
MA (20, Volume, ma, 0)	896m
MACD (12,26,9)	8
Signal macd (12,26,9)	15
macd (12,26,9)_hist	-7

Indicators used: Bollinger Bands, MACD, RSI, Moving Average (20 days) Volume

Today's
Outlook

Disclaimers: This MARKET SUMM is prepared to timely update the market participants about the Nepalese stock market before the Market opens for the day. The information and data herein should not be construed as an investment advice or recommendation. Should the investors choose to act based on this report, it shall be entirely at their own risk and KCL Astute shall not be liable, for any loss or damages incurred thereby. Unless otherwise specifically stated, the above data concerns the previous trading day.

KCL Astute Capital Limited

Address: Sundar Bhawan, Hattisar, Kathmandu

Contact No. 977-1-4429149 | 4429150,

Email: info@kclastute.com