



MARKET SUMMARY		
NEPSE	1179.36	0.19%
Total Turnover (Rs.)	347,879,469	1.49%
Share Volume	1,513,912	36.51%
Total Transactions	3,205	-10.30%
Total Market Cap. (Rs. Mill)	1,411,667.8	0.23%
Floated Market Cap (Rs. Mill)	489,907.09	0.25%

MARKET CAP TO GDP RATIO	46.94%	▲
-------------------------	--------	---

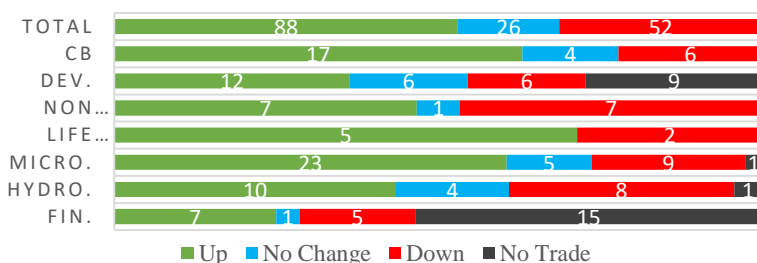
WEIGHTAGE ON MARKET CAP (as on 24.09.75)	
Commercial Banks	52.82%
Development Bank	5.22%
Finance	3.12%
Microfinance	6.20%
Life Insurance	8.31%
Non-life Insurance	6.76%
Hydropower	4.05%
Hotel	1.63%
Manufacturing And Processing	2.83%
Trading	0.10%
Others	8.97%
NTC	7.77%

Top Gainers	BHBL, HPPL, HDL
Top Losers	HATH, SAEF, ICFC
Top Stocks by Shares Traded	CBBLPO, NBL, PRVU
Top Stocks by Transactions	BOKL, NBL, NICA
Top Stocks by Turnover	CBBLPO, NBL, NICA
Top Brokers by Turnover	49, 45, 38

NEPSE STATISTICS	
Average Return	17.21%
Standard Deviation	17.42%
Standard Error	1.15%
Skewness	0.44
Kurtosis	3.36

Notes: NEPSE Index from 2069.04.01 –2075.09.25. Avg. annual trade days 229. Lognormal return is used. Skewness shows market is asymmetrically skewed to right, indicating average return of 17.21% more affected by outliers. Further excess kurtosis shows fat tail and more peaked distribution than normal.

## TRADED SCRIPTS STATS



## MARKET OVERVIEW

NEPSE surged 2.29 points on Wednesday to close at 1,179.36. Though the Transaction of only 3,205 scripts took place which is lower than earlier day, the Volume increased along with the Turnover amounts at the end of the day. Sensitive, Float and Sensitive Float index increased 0.42, 0.18 and 0.14 points respectively.

Only Finance and Others sub-indices registered loss of 0.18 and 1.11 points respectively while rest all sub-indices posted gain. Major gainers were Manu. & Pro. (12.57 points), Life insurance (9.73 points) and Development banks (8.32 points). Banking rose by 2.43 points and Non-life insurance rose by 6.3 points.

CBBLPO and SKDBL underperformed the most as compared to its sector performance while BHBL, HPPL, and NMBMF performed relatively well. CBBLPO, NIB, and NBB were the most volatile stocks. NABIL, LFC and SINDU are trading closer to 52 weeks low while PCBLP, NTC and NIBPO are trading near to 52 weeks high. SHL, SADBL and MNBBL have falling investors participation and SKDBL, MERO, and HIDCL have rising participations.

## MAJOR MARKET NEWS

- NEPSE listed NBBL 7,66,531.44 Units Rights Share of NBBL
- Shuvam Power Ltd. Rs.58,058,000 worth of proposed IPO received “ICRANP IPO Grade 5” rating from ICRA.
- Sanjen Jalavidhyut Company Ltd. Rs. 547,500,000 worth of proposed IPO received “ICRANP IPO Grade 4+” from ICRA.
- NIC Asia Bank received “ISO 9001-2015” certification from United Registrar of Systems (UKAS-UK) for its quality services.
- AMFI 4<sup>th</sup> AGM endorsed 70% Right Shares.
- Ashutosh Brokerage & Securities, Broker No. 8, has been removed from Black listed; can perform brokerage activities.
- UMB received approval from SEBON for issuance of 20% Right shares.
- CZBIL stationed Dhangadi as Provincial office for Province 7; Provincial office to monitor and coordinate the branches of bank in the Province.



### MAJOR EVENTS (On Thursday)

- NMB 23<sup>rd</sup> AGM
- NBB 24<sup>th</sup> AGM
- MIDBL 9<sup>th</sup> AGM
- SWBBL 17<sup>th</sup> AGM
- SHL 44<sup>th</sup> AGM
- GDBL 11<sup>th</sup> AGM
- CORBL 7/8/9/10<sup>th</sup> AGM
- Book closure day for 4<sup>th</sup> AGM of NGBBL
- Book closure day for 17<sup>th</sup> AGM of DDBL

GLOBAL INDICES		
<b>SENSEX</b>	36,212.91	+231.98
<b>NIFTY</b>	10,855.15	+53.00
<b>S&amp;P 500</b>	2,574.41	+0.97%
<b>DJIA</b>	23,787.45	+256.10
<b>NIKKEI 225</b>	20,427.06	+223.02

# AMAZON; the most valuable company with \$796.78 Billion market cap.

COMMERCIAL BANKS SCRIPTS PRICINGS			
	Script Name	Ticker	LTP
UNDER PRICED	Nepal Credit And Commercial Bank	NCCB	219.00
	Nepal Bank Ltd.	NBL	308.00
	Janata Bank Nepal Ltd.	JBNL	169.00
	Citizen Bank International Limited	CZBIL	214.00
	Mega Bank Nepal Ltd.	MEGA	173.00
FAIRLY PRICED	Civil Bank Ltd	CBL	163.00
	NMB Bank Limited	NMB	326.00
	Kumari Bank Limited	KBL	245.00
	Nepal Investment Bank Limited	NIB	549.00
OVER PRICED	Laxmi Bank Limited	LBL	221.00
	Standard Chartered Bank Limited	SCB	605.00
	Nabil Bank Limited	NABIL	834.00
	Bank of Kathmandu Ltd.	BOKL	332.00
	Everest Bank Limited	EBL	532.00
Prime Commercial Bank Ltd.	PCBL	331.00	

**Notes:** # Above pricing is performed by averaging the prices derived as per P/E, P/B and 180 days closing averages.  
# Harmonic Mean of industries is carried for Pricings.

### NEPSE TECHNICAL OUTLOOKS



<b>Date / Time</b>	<b>25.09.2075</b>
<b>Close</b>	1,179.36
<b>Open</b>	1,177.01
<b>High</b>	1,183.12
<b>Low</b>	1,176.88
<b>Turnover</b>	347,879,469
<b>Bollinger Bands Top Bollinger Bands (20,2,ma,y)</b>	1,215.48
<b>Bollinger Bands Median Bollinger Bands (20,2,ma,y)</b>	1,182.26
<b>Bollinger Bands Bottom Bollinger Bands (20,2,ma,y)</b>	1,149.04
<b>RSI (14)</b>	50
<b>MA (20, Volume, ma, 0)</b>	438m
<b>MACD (12,26,9)</b>	2
<b>Signal macd (12,26,9)</b>	3
<b>macd (12,26,9)_hist</b>	-1

Indicators used: Bollinger Bands, MACD, RSI, Moving Average (20 days) Volume



*Disclaimers: This MARKET SUMM is prepared to timely update the market participants about the Nepalese stock market before the Market opens for the day. The information and data herein should not be construed as an investment advice or recommendation. Should the investors choose to act based on this report, it shall be entirely at their own risk and KCL Astute shall not be liable, for any loss or damages incurred thereby. Unless otherwise specifically stated, the above data concerns the previous trading day.*

### KCL Astute Capital Limited

Address: Sundar Bhawan, Hattisar, Kathmandu

Contact No. 977-1-4429149 | 4429150, Email: info@kclastute.com