



MARKET SUMMARY		
NEPSE	1275.81	-0.68%
Total Turnover (Rs.)	610,334,831	3.65%
Share Volume	2,072,282	11.46%
Total Transactions	8,328	3.06%
Total Market Cap. (Rs. Mill)	1,586,288.39	-0.64%
Floated Market Cap (Rs.Mill)	554,990.11	-0.57%

MARKET CAP TO GDP RATIO	52.74%	▼
-------------------------	--------	---

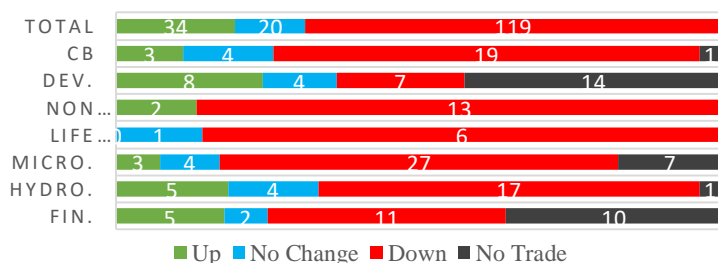
WEIGHTAGE ON MARKET CAP	
Commercial Banks	52.73%
Development Bank	5.14%
Finance	3.06%
Microfinance	5.80%
Life Insurance	7.64%
Non-life Insurance	5.89%
Hydropower	5.82%
Hotel	1.75%
Manufacturing And Processing	4.29%
Trading	0.09%
Others	7.79%
NTC	6.67%

Top Gainers	WMBF, HDL, GMFBS
Top Losers	TRH, RLFL, UPCL
Top Stocks by Shares Traded	CEFLPO, SBL, NICA
Top Stocks by Transactions	UPPER, SHIVM, PPCL
Top Stocks by Turnover	NICA, SHIVM, SBL
Top Brokers by Turnover	42, 34, 47

NEPSE STATISTICS	
Average Return	17.22%
Standard Deviation	17.13%
Standard Error	1.13%
Skewness	0.45
Kurtosis	3.42

Notes: NEPSE Index from 2069.04.01 – 2076.02.27. Avg. annual trade day's 229. Lognormal return is used. Skewness shows market is asymmetrically skewed to right, indicating average return of 17.22% more affected by outliers. Further excess kurtosis shows fat tail and more peaked distribution than normal.

TRADED SCRIPTS STATS



MARKET OVERVIEW

Market continued its downtrend on Tuesday, closing the day at 1,275.81 level, forming a Red candle with a fall of 8.78 points. However total turnover, share volume and total transactions all increased by 3.65%, 11.46% and 3.06% respectively. Highest reached throughout the day was 1289.54 while the lowest was 1274.43. The trade of 173 scripts resulted in a total turnover of Rs. 61 Crores. Sensitive, Float and Sensitive Float all recorded the loss of 1.43, 0.57 and 0.38 points respectively.

The sub-indices that reported a gain were Manu. & Pro and Development Bank, gaining 15.55 and 4.47 points respectively. Remaining all other sub- indices saw a loss for the day with Non-life Insurance, Life Insurance and Hotels losing the most by 124.38, 62.43 and 34.06 points respectively. Banking posted fall of 5.61 points while Microfinance fell by 11.49 points.

WMBF, KADBL and SLBSL outperformed its respective sectors by the most whereas TRH, RLFL and CFCL unperformed its respective sectors by the most. BFC, KRBL and GUFL were the most volatile stocks. JBBL and KSBBL have been in consecutive rise for 3 days despite overall bearish trend. TRH, CEFLPO and RLFL traded closest to their 52 week high while VLBS, MSLB and SMB traded closest to their 52 week low.

MAJOR MARKET NEWS

- ☑ Mr. Rajendra Das Shrestha appointed as new Chairman of PCBL.
- ☑ RADHI to propose 5% Bonus and 5% Cash for its up coming AGM.
- ☑ PCBL 11th AGM endorsed 16% Bonus shares.
- ☑ NEPSE has listed 52,640 Units (1%) Bonus Shares of NCDB.
- ☑ JSLBB will open 100% Right's Issue from Asar 12 to Shrawan 15.
- ☑ PICL will be holding SGM on Asar 10; Agenda: Issue of 10:6 Rights Shares, increase capital base.
- ☑ Swap ratio for the acquisition of Aarthik Samriddhi Laghubitta by Sadhana Laghubitta determined at 100:80. Post acquisition 100% Right's Issue by acquirer.
- ☑ Swabhimaan Laghubitta Bittiya Sanstha Ltd. (SMBSL) 618,610 units of IPO shares has been listed by NEPSE.
- ☑ NLIC publishes its 30th AGM minute.
- ☑ Global IME Capital Ltd. to start refunding money to the non-allotted investors of Auction shares of Mero Microfinance.



Major Events (Today)

- Book closure day for 12% Bonus of SLICL
- “10.5% Nepal Investment Bank Debenture 2082” last day
- NFO Alert:** NIBL Sahabhogita Fund, an Open End MF worth Rs.12.5 crores (12.5 million at Rs.10 each) has been extended upto 16th Ashad, after the issue remained undersubscribed by more than 50% till 22nd Jestha;
- NFO Alert:** Issue of Citizens Mutual Fund-2 (CMF II), 7-years closed end fund worth Rs.1 billion (100 million units at Rs.10) extended till 8th Asadh, 2076 after undersubscription.

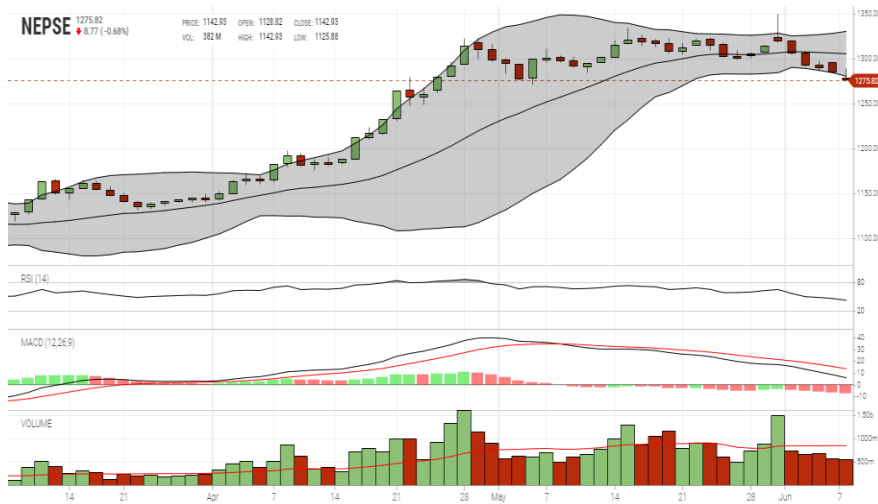
GLOBAL INDICES		
SENSEX	39835.22	+50.70
NIFTY	11932.70	+10.00
S&P 500	2,886.73	+13.39
DJIA	26,062.68	+78.74
NIKKEI 225	21,205.00	+70.58

	Stock Name	Ticker	LTP
UNDER PRICED	Laxmi Bank Limited	LBL	217.00
	Nepal Bank Ltd.	NBL	325.00
	Kumari Bank Ltd.	KBL	215.00
	Civil Bank Ltd.	CBL	145.00
	Prime Commercial Bank Ltd.	PCBL	300.00
	Nepal Bangladesh Bank Ltd.	NBB	223.00
FAIRLY PRICED	Sunrise Bank Limited	SRBL	254.00
	Global IME Bank Ltd.	GBIME	301.00
	Laxmi Bank Limited	LBL	217.00
	Mega Bank Nepal Limited	MEGA	199.00
	Agricultural Development Bank Ltd.	ADBL	412.00
OVER PRICED	Standard Chartered Bank Limited	SCB	673.00
	Everest Bank Limited	EBL	675.00
	Himalayan Bank Limited	HBL	565.00
	Nepal SBI Bank Limited	SBI	470.00
	Nabil Bank Limited	NABIL	826.00

Notes: # Above pricing is performed by averaging the prices derived as per P/E, P/B and 180 days closing averages. Based on Published Q3 75/76 data.

Harmonic Mean of industries is carried for Pricings.

NEPSE TECHNICAL OUTLOOKS



Date / Time	27.02.2076
Close	1275.82
Open	1278.28
High	1289.54
Low	1274.43
Turnover	610,334,831
Bollinger Bands Top Bollinger Bands (20,2,ma,y)	1330.73
Bollinger Bands Median Bollinger Bands (20,2,ma,y)	1305.75
Bollinger Bands Bottom Bollinger Bands (20,2,ma,y)	1280.77
RSI (14)	43
MA (20, Volume, ma, 0)	849m
MACD (12,26,9)	6
Signal macd (12,26,9)	14
macd (12,26,9)_hist	-8

Indicators used: Bollinger Bands, MACD, RSI, Moving Average (20 days) Volume

Today's Outlook

Disclaimers: This MARKET SUMM is prepared to timely update the market participants about the Nepalese stock market before the Market opens for the day. The information and data herein should not be construed as an investment advice or recommendation. Should the investors choose to act based on this report, it shall be entirely at their own risk and KCL Astute shall not be liable, for any loss or damages incurred thereby. Unless otherwise specifically stated, the above data concerns the previous trading day.

KCL Astute Capital Limited

Address: Sundar Bhawan, Hattisar, Kathmandu

Contact No. 977-1-4429149 | 4429150,

Email: info@kclastute.com

KCL ASTUTE CAPITAL RESEARCH TEAM