



MARKET SUMMARY		
NEPSE	1,249.15	-0.09%
Total Turnover (Rs.)	573,447,509	+22.46%
Share Volume	2,998,947	+86.54%
Total Transactions	5,272	-9.07%
Total Market Cap. (Rs. Mill)	1,555,115.47	-0.09%
Floated Market Cap (Rs. Mill)	553,967.41	+0.01%

MARKET CAP TO GDP RATIO	51.71% ▼
-------------------------	----------

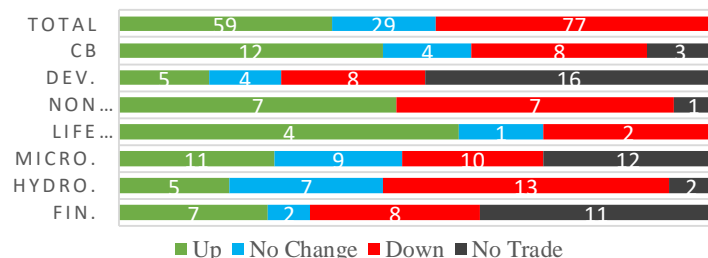
WEIGHTAGE ON MARKET CAP	
Commercial Banks	53.13%
Development Bank	5.17%
Finance	3.00%
Microfinance	5.93%
Life Insurance	7.47%
Non-life Insurance	5.63%
Hydropower	5.91%
Hotel	1.74%
Manufacturing And Processing	4.18%
Trading	0.10%
Others	7.74%
NTC	6.62%

Top Gainers	ILBS, SMFDB, MPFL
Top Losers	CLBSL, KADBL, AKJCL
Top Stocks by Shares Traded	CBLPO, NBL, MEGA
Top Stocks by Transactions	UPPER, MEGA, PRVU
Top Stocks by Turnover	CBLPO, CIT, NBL
Top Brokers by Turnover	44, 10, 49

NEPSE STATISTICS	
Average Return	16.68%
Standard Deviation	17.04%
Standard Error	1.13%
Skewness	0.46
Kurtosis	3.47

Notes: NEPSE Index from 2069.04.01 – 2076.03.25. Avg. annual trade day's 229. Lognormal return is used. Skewness shows market is asymmetrically skewed to right, indicating average return of 16.68% more affected by outliers. Further excess kurtosis shows fat tail and more peaked distribution than normal.

TRADED SCRIPTS STATS



MARKET OVERVIEW

NEPSE reported a marginal loss of 1.12 points on Wednesday, closing at 1249.15 level. Market remained volatile during the day, trading at the range of 1246.15 to 1251.90 level. However, indicators like Turnover, Volume rose by 22.46%, and 86.54% respectively. While, total transaction at the end of the day fell by 9.07%. The trade of 168 scripts led to a turnover of Rs. 57.34 crores. Sensitive and Sensitive Float closed red by losing 0.73 and 0.12 points respectively. Meanwhile, Float closed green by a meagre gain of 0.01 points.

Most of the sub-indices closed red at the end of the day. Remaining sub-indices posted meagre gain. Microfinance, Banking and Life Insurance reported gain of 3.52, 1.78 and 1.44 points respectively. Sectors to lose the most are Manu & Pro, followed by Non-life Insurance and Hydropower which reported loss of 27.01, 16.75 and 4.54 points respectively.

ILBS, SEOS and CMF1 outperformed its respective sector while CLBSL, AKPL and KADBL underperformed the most in comparison to their respective sectors. AKPL, AKJCL and CLBSL were the most volatile stocks. KSBBL, MPFL and CFCL traded closest to their 52 week high whereas PRIN, HGI and RSDC traded closest to their 52 week low.

ILBS hit positive circuit, price rising by 9.81%. Whereas, CLBSL hit negative circuit, price losing by 9.67%.

MAJOR MARKET NEWS

- 📌 GILB is issuing 100% right shares for its shareholders. The book closure date for the same is set at 1st Shrawan, 2076.
- 📌 60% proposed right shares of NLG receives IPO Grade 3, indicating average fundamentals.
- 📌 SIC is distributing 86% bonus shares to its shareholders. The bonus tax levied should be paid by shareholders.
- 📌 The allotment of NFO issue of NIBL Sahabagita Fund is concluded
- 📌 WOMI is issuing 100% right shares for its shareholders. The book closure date for the same is set at 27th Asadh, 2076.
- 📌 NRB is selling Development Bond worth Rs. 12 arba with maturity period of 5 years. Interested bidders can apply for the issue till 26th Asadh, 2076.
- 📌 Even after 2 weeks of granting the margin lending license to brokers, the said services is not rendered to investors.



Under Watch: Monetary Policy for FY 2076/77
– likely date 27th Asadh

Major Events (Today)

- Auction Alert:** RMDC is selling its 323,525 unit promoter shares till 16th Shrawan, 2076.
- IPO Alert:** 7,672,210 units IPO Issue of Himal Dolakha Hydropower Company Ltd. from 25th to 29th Asadh.
- Right Issue:** 100% Right Shares of JSLBB is open for issuance till 15th Shrawan, 2076.
- Right Issue:** 865% Right Shares of MPFL is open for issuance till 26th Shrawan, 2076.

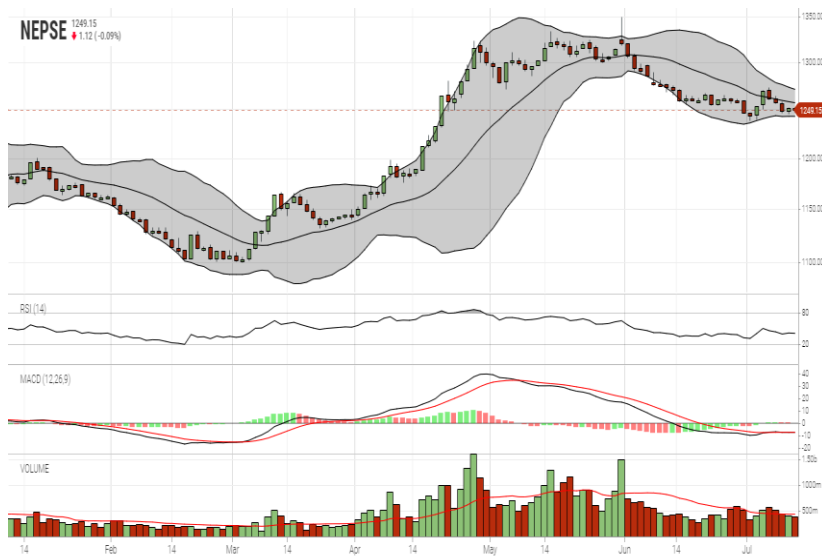
Upcoming IPO: 530,000 units IPO Issue of Sabaiko Laghubitta Bittiya Sanstha Limited. from 1st to 5th Shrawan.

GLOBAL INDICES		
SENSEX	38,751.62	+194.58
NIFTY	11,561.45	+62.55
S&P 500	2,993.07	+13.44
DJIA	26,860.20	+76.71
NIKKEI 225	21,622.50	+89.02

	Stock Name	Ticker	LTP
UNDER PRICED	Prime Commercial Bank Ltd.	PCBL	274.00
	Nepal Bank Ltd.	NBL	338.00
	Kumari Bank Ltd.	KBL	220.00
	Nepal Credit and Commerce Bank	NCCB	245.00
	Prabhu Bank Limited	PRVU	260.00
FAIRLY PRICED	Siddhartha Bank Limited	SBL	313.00
	Sunrise Bank Limited	SRBL	252.00
	Global IME Bank Limited	GBIME	295.00
	Laxmi Bank Limited	LBL	227.00
OVER PRICED	Century Commercial Bank Ltd.	CCBL	176.00
	Standard Chartered Bank Limited	SCB	669.00
	Everest Bank Limited	EBL	659.00
	Nabil Bank Limited	NABIL	811.00
	Nepal SBI Bank Limited	SBI	460.00
	Himalayan Bank Limited	HBL	535.00

Notes: # Above pricing is performed by averaging the prices derived as per P/E, P/B and 180 days closing averages. Based on Published Q3 75/76 data.
Harmonic Mean of industries is carried for Pricings.

NEPSE TECHNICAL OUTLOOKS



Date / Time	25.03.2076
Close	1249.15
Open	1250.44
High	1251.90
Low	1246.15
Turnover	573,447,509
Bollinger Bands Top Bollinger Bands (20,2,ma,y)	1270.81
Bollinger Bands Median Bollinger Bands (20,2,ma,y)	1256.66
Bollinger Bands Bottom Bollinger Bands (20,2,ma,y)	1242.50
RSI (14)	41
MA (20, Volume, ma, 0)	443m
MACD (12,26,9)	-7
Signal macd (12,26,9)	-7
macd (12,26,9)_hist	0

Indicators used: Bollinger Bands, MACD, RSI, Moving Average (20 days) Volume



Disclaimers: This MARKET SUMM is prepared to timely update the market participants about the Nepalese stock market before the Market opens for the day. The information and data herein should not be construed as an investment advice or recommendation. Should the investors choose to act based on this report, it shall be entirely at their own risk and KCL Astute shall not be liable, for any loss or damages incurred thereby. Unless otherwise specifically stated, the above data concerns the previous trading day.

KCL Astute Capital Limited
Address: Sundar Bhawan, Hattisar, Kathmandu
Contact No. 977-1-4429149 | 4429150,
[Email: info@kclastute.com](mailto:info@kclastute.com)