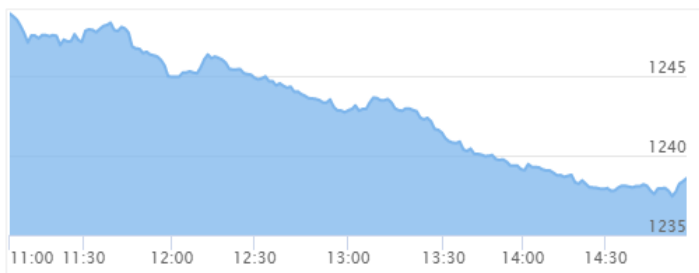




## NEPSE Index – Thursday



## MARKET SUMMARY

<b>NEPSE</b>	1,238.56	-0.79%
<b>Total Turnover (Rs.)</b>	454,629,575	23.32%
<b>Share Volume</b>	1,877,542	64.89%
<b>Total Transactions</b>	29,496	444.91%
<b>Total Market Cap. (Rs. Mill)</b>	1,567,426.6	-0.79%
<b>Floated Market Cap (Rs.Mill)</b>	562,441.89	-0.83%

**MARKET CAP TO GDP RATIO** 52.12% ▼

## WEIGHTAGE ON MARKET CAP

<b>Commercial Banks</b>	52.49%
<b>Development Bank</b>	5.10%
<b>Finance</b>	2.88%
<b>Microfinance</b>	6.29%
<b>Life Insurance</b>	7.23%
<b>Non-life Insurance</b>	5.53%
<b>Hydropower</b>	7.00%
<b>Hotel</b>	1.71%
<b>Manufacturing And Processing</b>	4.02%
<b>Trading</b>	0.10%
<b>Others</b>	7.66%
<b>NTC</b>	6.57%

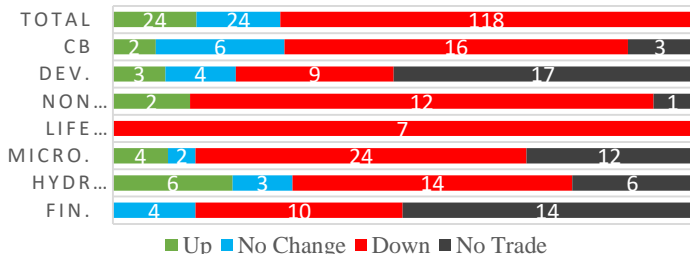
<b>Top Gainers</b>	SMB, VLBS, SAEF
<b>Top Losers</b>	RHPL, SJCL, SLBBL
<b>Top Stocks by Shares Traded</b>	RHPL, SJCL, CBLPO
<b>Top Stocks by Transactions</b>	RHPL, SJCL, UPPER
<b>Top Stocks by Turnover</b>	RHPL, SJCL, NBL
<b>Top Brokers by Transactions</b>	34, 58, 44

## NEPSE STATISTICS

<b>Average Return</b>	16.35%
<b>Standard Deviation</b>	16.96%
<b>Skewness</b>	0.46
<b>Kurtosis</b>	3.51

Notes: NEPSE Index from 2069.04.01 – 2076.04.23. Avg. annual trade day's 229. Lognormal return is used. Skewness shows market is asymmetrically skewed to right, indicating average return of 16.35% more affected by outliers. Further excess kurtosis shows fat tail and more peaked distribution than normal.

## TRADED SCRIPTS STATS



## MAJOR MARKET NEWS

- 📌 Market closed the week on Thursday with a fall of 9.92 point, closing the index at 1238.56.
- 📌 Sensitive, Float and Sensitive Float Index dropped 1.96, 0.77 and 0.69 points respectively.
- 📌 NEPSE witnessed the highest number of transaction till date on Thursday, totalling 29,496.
- 📌 All Sub-indices closed Red on the day, Hydropower losing the most.
- 📌 The issue on CGT Calculation still unresolved; SEBON tasked to solve the matter urgently; Accordingly, NEPSE and CDS & Clearing Ltd. proposed weighted average price basis.
- 📌 IPO issue of Himal Dolkha Hydropower Ltd. closed undersubscribed.
- 📌 *RHPL hit negative circuit, price falling by 9.7%.*
- 📌 BOKL Q4 75/76 y-o-y Net profit increased by 46.7% to Rs.1.93 billion; EPS Rs.24.04 BVPS Rs.173.72.
- 📌 CLBSL Q4 75/76 y-o-y Net profit increased by 45.31% to Rs.1.63 crores; EPS Rs.14.36 BVPS Rs.118.63.
- 📌 Mr. Sharad Nidhi Tiwari elected as the new Chairman of NUBL, effective from 23<sup>rd</sup> Shrawan.
- 📌 Price adjusted for 7.50% Bonus share of NICL.
- 📌 Mr. Sajan Devkota has resigned from the CEO post of SHIVM with personal reasoning; the responsibility for the vacated position to be carried on by Mr. Raghunandan Maru, *the Managing Director of the Co.*
- 📌 Mr. Ashok Kumar Khadka has resumed the office as new CEO of NIL.
- 📌 LICN's 17<sup>th</sup> AGM endorsed 70% dividend; 34.46% Bonus and 35.54% Cash dividend.

## Today Events (Sunday)

- 📌 Book closure date of NCCB for 20<sup>th</sup> and 21<sup>st</sup> AGM
- 📌 **NFO Alert:** SIGS2 worth Rs.1.40 billion (140 million units at Rs.10 each). *Issue open from today.*
- 📌 **NFO Alert:** NMB 50 worth Rs.1.20 billion (120 million units at Rs.10 each). *Issue date extended.*
- 📌 **NFO Alert:** NIC ASIA Balance Fund worth Rs.1.25 billion (125 million units at Rs.10 each). *Extended*
- 📌 **Debenture Alert:** 10.25% NIC ASIA Debenture 2083/84
- 📌 **Debenture Alert:** 10.25% Machhapuchchhre Debenture 2085
- 📌 **Debenture Alert:** 10% Himalayan Bank Ltd. Debenture 2083
- 📌 **Right Alert:** 865% right shares of MPFL is open for issuance till 26th Shrawan.

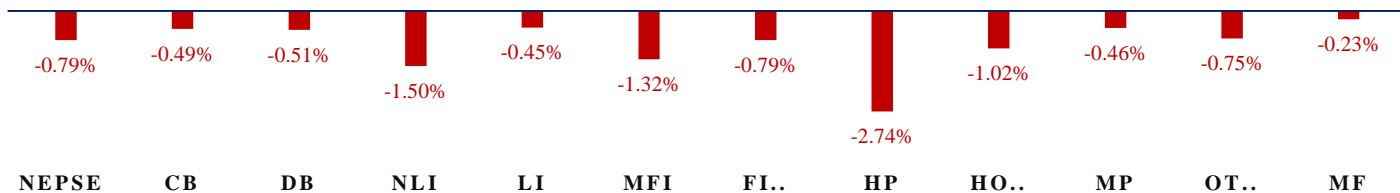
**Fundamental Watch:** Quarter 4 2075/76 Unaudited Reports



# MARKET SUMM...

26<sup>th</sup> Shrawan, 2076 Sunday

### INDICES % CHANGE



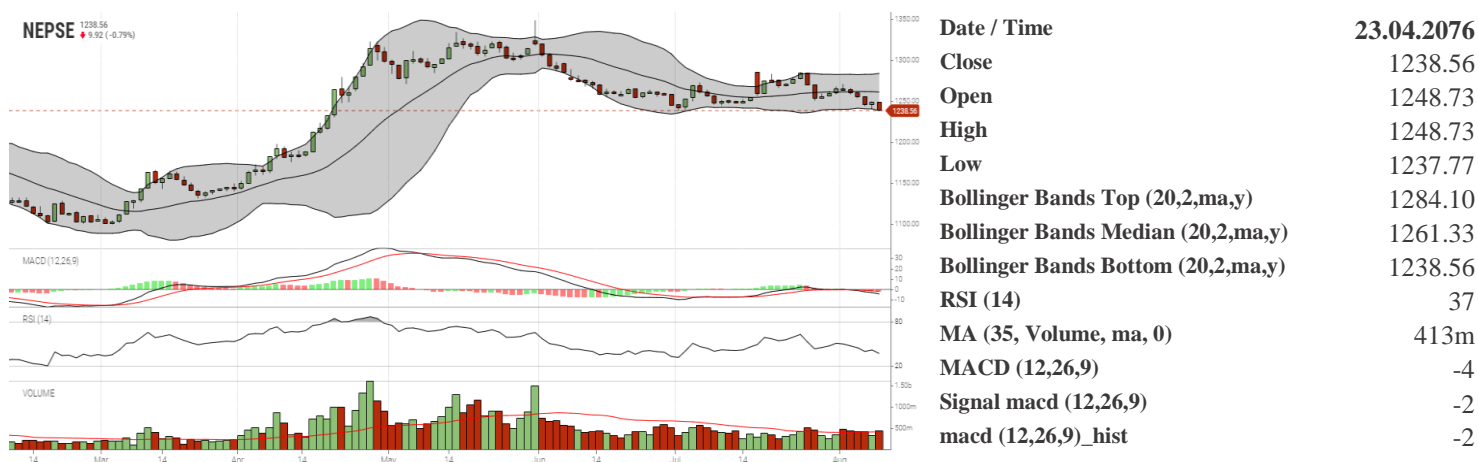
Volatile Stock		Stock Movement		Highest Volume for the week (Trade day 5)	
SJCL	(224) 16.51%	SPDL	(86) <i>Lowest till now</i>	RHPL	(214) 906,362 units
RHPL	(214) 15.89%	NHDL	(115) <i>Lowest till now</i>	NBL	(328) 550,445 units
GLICL	(480) 5.2%	UPCL	(86) <i>Lowest till now</i>	ADBL	(431) 530,588 units

Sectorial Outlooks		Stock Pick...	
<b>Bullish</b>	<b>Bearish</b>	<b>Up Pick</b>	<b>Down Pick</b>
Hotel	Finance	MLBL	SICL
Banking	Microfinance	UPPER	CBBL

Financial Metrics										
S.N.	Ticker	LTP	EPS	BVPS	P/E	P/B	ROE	NPL	CAR	Remarks
1	BOKL	264	24.04	173.72	10.98	1.52	14.64%	1.50%	14.58%	-
1	LBL	216	17.67	141.67	12.22	1.52	13.25%	1.11%	11.33%	-
2	NUBL	882	61.62	235	14.31	3.75	29.15%	1.17%	12.20%	-
3	MPFL	110	21.83	152.44	5.04	0.72	15.95%	4.51%	25.51%	864.469% right shares
5	UMB	878	47.43	164.96	18.51	5.32	34.95%	1.63%	9.93%	-

Note: If asterisk sign (\*) financial metrics denotes Quarter 3 75/76 data, otherwise financial metrics are of Quarter 4 75/76 data.

### NEPSE TECHNICAL OUTLOOKS



Indicators used: Bollinger Bands, MACD, RSI, Moving Average (35 days) Volume

Global Indices	SENSEX	NIFTY	S&P 500	DJIA	NIKKEI 225
	37,581.91 (+0.68%)	11,109.65 (+0.70%)	2,918.65 (-0.66%)	26,287.44 (-0.34%)	20,684.32 (+0.44%)



Disclaimers: This MARKET SUMM is prepared to timely update the market participants about the Nepalese stock market before the Market opens for the day. The information and data herein should not be construed as an investment advice or recommendation. Should the investors choose to act based on this report, it shall be entirely at their own risk and KCL Astute shall not be liable, for any loss or damages incurred thereby. Unless otherwise specifically stated, the above data concerns the previous trading day.

### KCL Astute Capital Limited

Address: Sundar Bhawan, Hattisar, Kathmandu

Contact No. 977-1-4429149 | 4429150,

Email: [info@kclastute.com](mailto:info@kclastute.com)