



25th Bhadra, 2076 Wednesday

Market Summ... concerning previous day's trading Tuesday"

NEPSE Index – Tuesday



MARKET SUMMARY

NEPSE	1,166.67	-0.19%
Total Turnover (Rs.)	237,959,653	-20.47%
Share Volume	992,122	-30.56%
Total Transactions	6,631	-15.38%
Total Market Cap. (Rs. Mill)	1,481,747.95	-0.19%
Floated Market Cap (Rs. Mill)	535,089.19	-0.20%

MARKET CAP TO GDP RATIO **49.27%** ▼

WEIGHTAGE ON MARKET CAP

Commercial Banks	53.27%
Development Bank	5.40%
Finance	2.92%
Microfinance	6.51%
Life Insurance	6.87%
Non-life Insurance	5.30%
Hydropower	6.44%
Hotel	1.73%
Manufacturing And Processing	4.05%
Trading	0.11%
Others	7.39%
NTC	6.38%

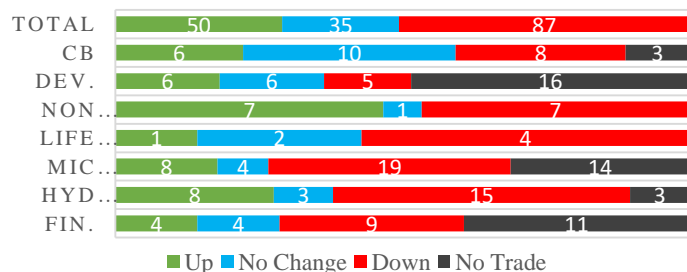
Top Gainers	HURJA, MHNL, NEF
Top Losers	CFCL, AKPL, KADBL
Top Stocks by Shares Traded	KBL, RHPL, CBL
Top Stocks by Transactions	AKBSL, RHPL, SJCL
Top Stocks by Turnover	KBL, NICA, NLIC
Top Brokers by Transactions	49, 45, 44

NEPSE STATISTICS

Average Return	15.29%
Standard Deviation	16.89%
Skewness	0.47
Kurtosis	3.54

Notes: NEPSE Index from 2069.04.01 – 2076.05.24. Avg. annual trade day's 229. Lognormal return is used. Skewness shows market is asymmetrically skewed to right, indicating average return of 15.29% more affected by outliers. Further excess kurtosis shows fat tail and more peaked distribution than normal.

TRADED SCRIPTS STATS



MAJOR MARKET NEWS

- ❏ Market lost 2.24 points on Tuesday for 4 consecutive days; NEPSE Index closed at 1166.67 level.
- ❏ Sensitive and Sensitive Float Index gained 0.21 and 0.06 points respectively. Whereas, Float Index lost 0.18 points at the end of the trading day.
- ❏ Most of the sub-indices closed red at the end of the day with Life Insurance followed by Manu & Pro. lost the most by 26.21 and 16.66 points respectively.
- ❏ The top gainer for the day is HURJA which gained by 6.72% and top loser for the day is CFCL which lost by 4.46%.
- ❏ 60% and 100% right shares of PICL and GLICL respectively is added to SEBON pipeline for approval.
- ❏ 10% Nabil Bank Debenture 2082 worth Rs. 2 arba is added to SEBON pipeline for approval.
- ❏ SMATA is issuing 200% right shares to its shareholders. The book closure date for the same is set on 1st Ashwin.
- ❏ 10.25% Siddhartha Bank Debentures worth Rs. 2.50 arba with a maturity period of 7 years has been oversubscribed by 5.6% till the last day of issuance.
- ❏ IPO worth Rs. 43.5 crores of Singhati Hydro Energy is added to SEBON pipeline for approval. The said issue landed CARE NP IPO 4 grade from Care Ratings Nepal.
- ❏ The 7% preference shares of Everest Bank Limited is to be converted to ordinary shares on 9th Ashwin, 2076. For this purpose, the trading of these shares would be halt from 2nd Ashwin to 30th Ashwin.
- ❏ Janauthhan Samudayik Laghubitta has allotted its 18,503 units ordinary shares via auction to the general public. Cut off stood at Rs. 801.

Today's Events (Wednesday)

- ❏ Last day to hold the units of NMBSF1 to be eligible for 15% cash dividend.
- ❏ Last day to hold the units of NMBHF1 to be eligible for 10% cash dividend.
- ❏ Book Closure Date for the 13th AGM of NLG.
- ❏ **Right Shares Alert:** MNBBL is issuing 20% Right
- ❏ **Right Shares Alert:** SLICL is issuing 70% Right
- ❏ **Right Shares Alert:** UIC is issuing 240% Right
- ❏ **Auction Alert:** BFC is auctioning its 557,674.57 units promoter shares and 244,549.90 units ordinary shares via auction. *Last day.*
- ❏ **Auction Alert:** NLBBL is auctioning its 87,300 units promoter via auction.

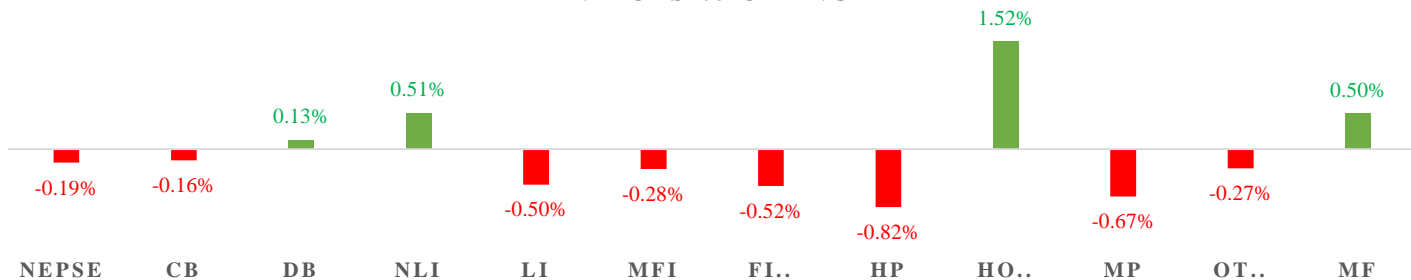


MARKET SUMM...



25th Bhadra, 2076 Wednesday

INDICES % CHANGE



Volatile Stocks

NAGRO	(778)	7.46%
NEF	(8.07)	6.89%
RHPL	(161)	6.25%

Stock Movement

SPDL	(70)	Lowest till now
RHPL	(161)	Lowest till now
SJCL	(177)	Lowest till now

Highest Volume – Day 3 (Week 9)

CBLPO	(100)	400,000 units
PRVUPO	(162)	323,951 units
KBL	(203)	167,212 units

Sectorial Outlooks

Bullish

-
-

Bearish

Life Insurance
Microfinance

Stock Pick...

Up Pick

HURJA
LLBS

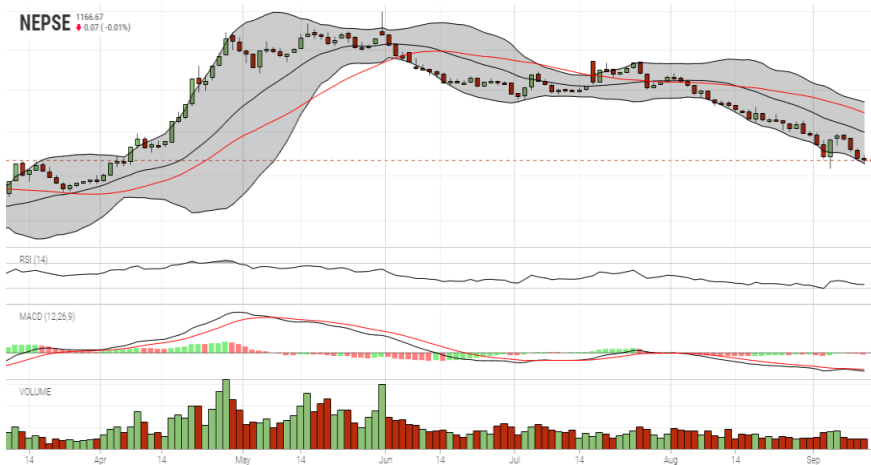
Down Pick

NLICL
PPCL

Financial Metrics

S.N.	Ticker	LTP	EPS	BVPS	P/E	P/B	ROE	NPL	CAR	Remarks
1	UPCL	77	1.37	101.19	56.20	0.76	-	-	-	-
1	SIC	535	27.62	191.17	19.37	2.80	15.57%	-	-	-
2	JSLBB	963	73.73	327.01	13.06	2.94	26.99%	2.23%	8.37%	-
3	NIL	382	29.22	195.90	13.07	1.95	16.12%	-	-	-
5	BFC	91	9.92	87.53	9.17	1.04	17.56%	18.46%	17.17%	-

NEPSE TECHNICAL OUTLOOKS



Date / Time	24.05.2076
Close	1166.67
Open	1168.92
High	1172.82
Low	1161.20
Bollinger Bands Top (20,2,ma,y)	1235.55
Bollinger Bands Median (20,2,ma,y)	1199.42
Bollinger Bands Bottom (20,2,ma,y)	1163.28
RSI (14)	28
MA (35, Price, ma, 0)	1222.46
MACD (12,26,9)	-18
Signal macd (12,26,9)	-16
macd (12,26,9)_hist	-2

Indicators used: Bollinger Bands, MACD, RSI, Moving Average (35 days) Volume

Global Indices

SENSEX	37,145.45 (+0.44%)	NIFTY	11,003.05 (+0.52%)	S&P 500	2,978.43 (-0.01%)	DJIA	26,835.51 (+0.14%)	NIKKEI 225	21,392.10 (+0.35%)
--------	--------------------	-------	--------------------	---------	-------------------	------	--------------------	------------	--------------------



Disclaimers: This MARKET SUMM is prepared to timely update the market participants about the Nepalese stock market before the Market opens for the day. The information and data herein should not be construed as an investment advice or recommendation. Should the investors choose to act based on this report, it shall be entirely at their own risk and KCL Astute shall not be liable, for any loss or damages incurred thereby. Unless otherwise specifically stated, the above data concerns the previous trading day.

KCL Astute Capital Limited

Address: Sundar Bhawan, Hattisar, Kathmandu

Contact No. 977-1-4429149 | 4429150

Email: info@kclastute.com