



MARKET SUMMARY		
NEPSE	1,248.53	-0.05%
Total Turnover (Rs.)	460,036,571	-19.78%
Share Volume	165,4251	-44.84%
Total Transactions	8,655	+64.17%
Total Market Cap. (Rs. Mill)	1,554,362.51	-0.05%
Floated Market Cap (Rs.Mill)	553,916.88	-0.01%

MARKET CAP TO GDP RATIO	51.68% ▼
-------------------------	----------

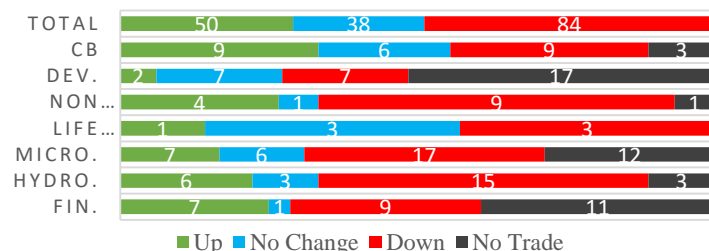
WEIGHTAGE ON MARKET CAP	
Commercial Banks	53.25%
Development Bank	5.16%
Finance	3.00%
Microfinance	5.91%
Life Insurance	7.44%
Non-life Insurance	5.62%
Hydropower	5.92%
Hotel	1.73%
Manufacturing And Processing	4.15%
Trading	0.10%
Others	7.72%
NTC	6.59%

Top Gainers	NADEP, SIFC, GHL
Top Losers	MPFL, LLBS, ILBS
Top Stocks by Shares Traded	NBL, CBL, DBBL
Top Stocks by Transactions	ILBS, SHIVM, UPPER
Top Stocks by Turnover	NBL, SHIVM, CBL
Top Brokers by Turnover	34, 49, 57

NEPSE STATISTICS	
Average Return	16.66%
Standard Deviation	17.04%
Standard Error	1.13%
Skewness	0.46
Kurtosis	3.48

Notes: NEPSE Index from 2069.04.01 – 2076.03.26. Avg. annual trade day's 229. Lognormal return is used. Skewness shows market is asymmetrically skewed to right, indicating average return of 16.66% more affected by outliers. Further excess kurtosis shows fat tail and more peaked distribution than normal.

### TRADED SCRIPTS STATS



### MARKET OVERVIEW

NEPSE reported a marginal loss of 0.62 points on Thursday, closing at 1248.53 level. Market remained volatile during the day, trading at the range of 1247.63 to 1251.09 level. Similarly, indicators like Turnover, and Volume fell by 19.78%, and 44.84% respectively. While, total transaction at the end of the day rose by 64.17%. The trade of 172 scripts led to a turnover of Rs. 46 crores. Sensitive and Float closed red by losing 0.01 and 0.01 points respectively. Meanwhile, Sensitive Float closed green by a meagre gain of 0.05 points.

Most of the sub-indices closed red at the end of the day. Remaining sub-indices like Banking and Hydropower posted meagre gain of 1.9 and 1.27 points respectively. Sectors to lose the most are Life Insurance, followed by Hotels and Manu & Pro. reported loss of 24.4, 20.44 and 19.28 points respectively. Likewise, Non Life Insurance and Microfinance lost by 2.99 and 5.53 points respectively.

VLBS, NADEP and LVF1 outperformed its respective sector while LLBS, DHPL and ILBS underperformed the most in comparison to their respective sectors. ILBS, CLBSL and NEF were the most volatile stocks. KSBBL, MPFL and ILBS traded closest to their 52 week high whereas SMB, MLBBL and PRIN traded closest to their 52 week low.

As per the Financial Comptroller General Office, the total revenue collection for FY 2075/76 is 82.56% of the Target Revenue. And the total expenditure for the same period is 76.33% of the target expenditure up till 26th Asadh, 2076.

### MAJOR MARKET NEWS

- 📌 IPO of Ghodighoda Laghubitta is set to be allotted on Friday. The issue was oversubscribed by more than 38.85 times.
- 📌 The joint operation of Nepal Investment Bank and Jebils Finance is to commence from 30<sup>th</sup> Asadh, 2076.
- 📌 NEPSE lists 1,000,000 units of 10% Sunrise Debenture 2080 for trading.
- 📌 NFO issue worth Rs. 1.25 arba relating to NIC Asia Balanced Fund is approved by SEBON.
- 📌 Care Ratings Nepal has assigned IPO Grade 4 to the 70% right shares issuance of SLICL; indicating below average fundamentals.
- 📌 BFC Finance has appointed Mr. Amir Dhoj Pradhan as the new chairman.



**Under Watch: Monetary Policy for FY 2076/77 – has been extended- Likely to announce in the first week of Shrawan 76.**

### Major Events (Today)

- Auction Alert:** RMDC is selling its 323,525 unit promoter shares till 16th Shrawan, 2076.
- IPO Alert:** 7,672,210 units IPO Issue of Himal Dolakha Hydropower Company Ltd. from 25th to 29th Asadh.
- Right Issue:** 100% Right Shares of JSLBB is open for issuance till 15<sup>th</sup> Shrawan, 2076.
- Right Issue:** 865% Right Shares of MPFL is open for issuance till 26<sup>th</sup> Shrawan, 2076.

**Upcoming IPO: 530,000 units IPO Issue of Sabaiko Laghubitta Bittiya Sanstha Limited. from 1<sup>st</sup> to 5<sup>th</sup> Shrawan.**

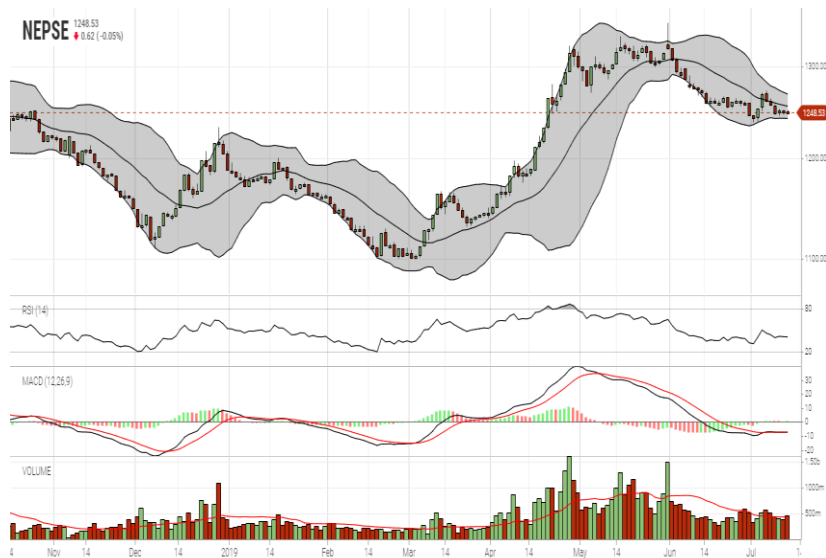
	Stock Name	Ticker	LTP
UNDER PRICED	Nepal Bank Ltd.	NBL	337.00
	Prime Commercial Bank Ltd.	PCBL	275.00
	Kumari Bank Ltd.	KBL	220.00
	Nepal Credit and Commerce Bank	NCCB	242.00
	Prabhu Bank Limited	PRVU	261.00
FAIRLY PRICED	Siddhartha Bank Limited	SBL	314.00
	Global IME Bank Limited	GBIME	295.00
	Sunrise Bank Limited	SRBL	249.00
	Janata Bank Nepal Limited	JBNL	214.00
	Century Commercial Bank Ltd.	CCBL	177.00
OVER PRICED	Standard Chartered Bank Limited	SCB	669.00
	Everest Bank Limited	EBL	666.00
	Nabil Bank Limited	NABIL	823.00
	Nepal SBI Bank Limited	SBI	459.00
	Himalayan Bank Limited	HBL	541.00

**Notes:** # Above pricing is performed by averaging the prices derived as per P/E, P/B and 180 days closing averages. Based on Published Q3 75/76 data.

# Harmonic Mean of industries is carried for Pricings.

GLOBAL INDICES		
SENSEX	38,770.26	-52.85
NIFTY	11,562.25	-20.65
S&P 500	2,999.91	+6.84
DJIA	27,088.08	+227.88
NIKKEI 225	21,665.50	+22.08

### NEPSE TECHNICAL OUTLOOKS



Date / Time	26.03.2076
Close	1248.53
Open	1249.46
High	1251.09
Low	1247.63
Turnover	460,036,571
Bollinger Bands Top Bollinger Bands (20,2,ma,y)	1268.86
Bollinger Bands Median Bollinger Bands (20,2,ma,y)	1255.60
Bollinger Bands Bottom Bollinger Bands (20,2,ma,y)	1242.34
RSI (14)	41
MA (20, Volume, ma, 0)	436m
MACD (12,26,9)	-7
Signal macd (12,26,9)	-7
macd (12,26,9)_hist	0

Indicators used: Bollinger Bands, MACD, RSI, Moving Average (20 days) Volume



**Disclaimers:** This MARKET SUMM is prepared to timely update the market participants about the Nepalese stock market before the Market opens for the day. The information and data herein should not be construed as an investment advice or recommendation. Should the investors choose to act based on this report, it shall be entirely at their own risk and KCL Astute shall not be liable, for any loss or damages incurred thereby. Unless otherwise specifically stated, the above data concerns the previous trading day.

### KCL Astute Capital Limited

Address: Sundar Bhawan, Hattisar, Kathmandu  
Contact No. 977-1-4429149 | 4429150,



# MARKET SUMM...



**KCL  
ASTUTE  
CAPITAL**

7<sup>th</sup> Asadh, 2076 Friday

[Email: info@kclastute.com](mailto:info@kclastute.com)