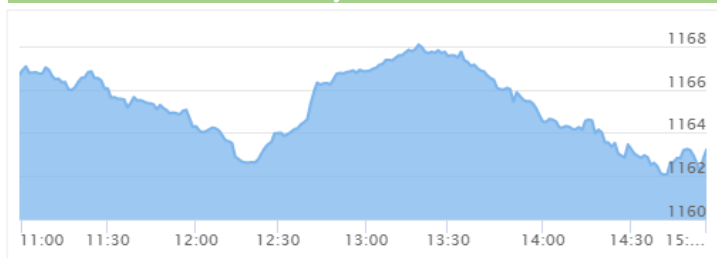




NEPSE Index – Wednesday



MARKET SUMMARY

NEPSE	1163.21	-0.30%
Total Turnover (Rs.)	341745136	+43.61%
Share Volume	1503928	+51.59%
Total Transactions	5430	-18.11%
Total Market Cap. (Rs. Mill)	1477352.79	-0.30%
Floated Market Cap (Rs.Mill)	533706.78	-0.26%

MARKET CAP TO GDP RATIO **49.12%** ▼

WEIGHTAGE ON MARKET CAP

Commercial Banks	53.54%
Development Bank	5.40%
Finance	2.93%
Microfinance	6.51%
Life Insurance	6.85%
Non-life Insurance	5.25%
Hydropower	6.44%
Hotel	1.70%
Manufacturing And Processing	4.05%
Trading	0.11%
Others	7.41%
NTC	6.38%

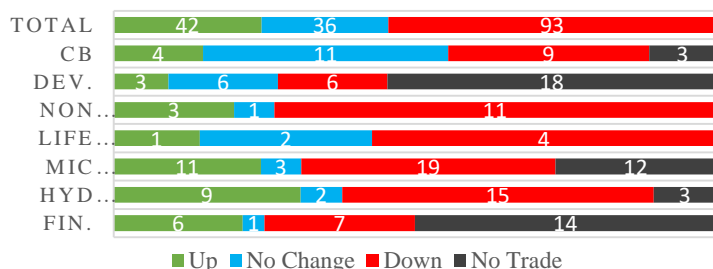
Top Gainers	GHL, AHPC, GMFIL
Top Losers	NEF, LLBS, DHPL
Top Stocks by Shares Traded	SHL, LBLPO, PRVU
Top Stocks by Transactions	SJCL, RHPL, AKBSL
Top Stocks by Turnover	SHL, LBLPO, CBBL
Top Brokers by Transactions	

NEPSE STATISTICS

Average Return	15.24%
Standard Deviation	16.89%
Skewness	0.47
Kurtosis	3.55

Notes: NEPSE Index from 2069.04.01 – 2076.05.25. Avg. annual trade day's 229. Lognormal return is used. Skewness shows market is asymmetrically skewed to right, indicating average return of 15.24% more affected by outliers. Further excess kurtosis shows fat tail and more peaked distribution than normal.

TRADED SCRIPTS STATS



MAJOR MARKET NEWS

- Market continued its downtrend on Wednesday, losing 3.46 points; NEPSE Index closed at 1163.21 level.
- Sensitive, Float and Sensitive Float Index dropped 0.79, 0.22 and 0.23 points respectively.
- Except Mutual Fund, remaining Sub-indices closed Red; Hotels and Non-Life Insurance losing the most.
- The top gainer for the day is GHL which gained by 4.41% and top loser for the day is NEF which lost by 6.69%.
- Prime Bank is to commence its joint transaction from 29th Bhadra after acquiring KNBL.
- CBBL has proposed 27.12% bonus shares and 17.22% cash dividend to its shareholders.
- LLBS has proposed 15% bonus shares and 11.32% cash dividend to its shareholders.
- The margin loan floated by BFIs till Asadh end, reached Rs. 45.41 arba, an increment by 10.43% as compared to previous year.
- The 20% preference shares of Everest Bank Limited is to be converted to ordinary shares on 9th Ashwin, 2076. The book closure date for the same is set on 2nd Ashwin.
- Last day to grab the 10% bonus shares and 11.05% cash dividend of NICA.
- CZBIL has proposed 3% bonus shares and 12% cash dividend to its shareholders. The book closure for the same is set at 31st Bhadra.
- Last day to grab the 10% bonus shares and cash dividend for tax purposes of KBL.

Today's Events (Thursday)

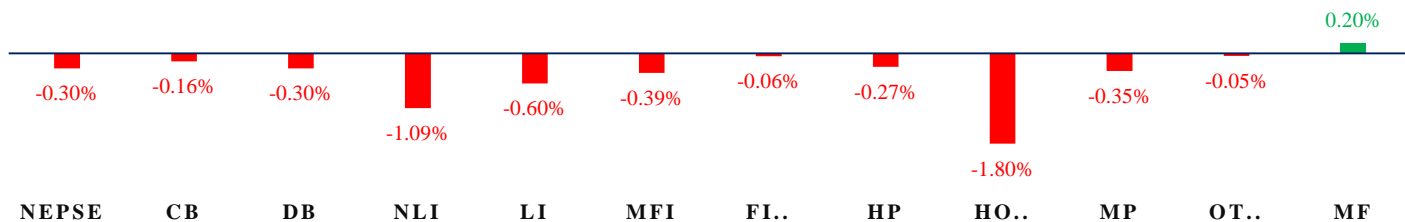
- Book Closure date for the 15% cash dividend of NMBSF1 and 10% cash dividend of NMBHF1.
- Right Shares Alert:** MNBBL is issuing 20% Right
- Right Shares Alert:** SLICL is issuing 70% Right
- Right Shares Alert:** UIC is issuing 240% Right
- Auction Alert:** NLBBL is auctioning its 87,300 units promoter via auction.

New Fund Offerings (Upcoming)

Schemes	Units	@ Rs.	Open
1 Sunrise First Mutual Fund	100,000,000	10	Coming Soon



INDICES % CHANGE

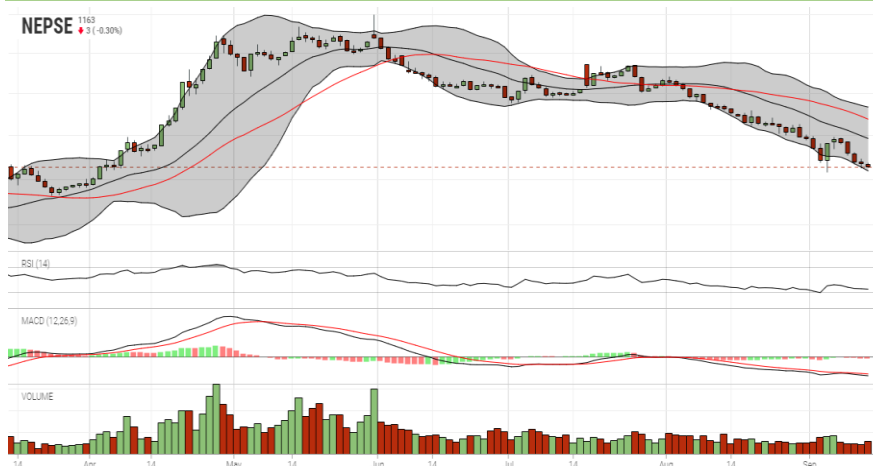


Volatile Stocks			Stock Movement			Highest Volume – Day 3 (Week 9)		
DHPL	(55)	9.26%	GGBSL	(239)	Highest till now	CBLPO	(100)	431,000 units
AHPC	(103)	8.33%	NGPL	(97)	Lowest till now	PRVUPO	(162)	323,951 units
UIC	(267)	6.87%	NHDL	(95)	Lowest till now	SHL	(219)	219,442 units

Sectorial Outlooks		Stock Pick...	
Bullish	Bearish	Up Pick	Down Pick
-	Life Insurance	HURJA	NLICL
-	Non-Life Insurance	NNLB	PPCL

Financial Metrics										
S.N.	Ticker	LTP	EPS	BVPS	P/E	P/B	ROE	NPL	CAR	Remarks
1	UPCL	77	1.37	101.19	56.20	0.76	-	-	-	-
1	SIC	526	27.62	191.17	19.04	2.75	15.57%	-	-	-
2	JSLBB	965	73.73	327.01	13.09	2.95	26.99%	2.23%	8.37%	-
3	NIL	383	29.22	195.90	13.11	1.96	16.12%	-	-	-
5	BFC	92	9.92	87.53	9.27	1.05	17.56%	18.46%	17.17%	-

NEPSE TECHNICAL OUTLOOKS



Date / Time	25.05.2076
Close	1163.21
Open	1166.68
High	1168.06
Low	1161.95
Bollinger Bands Top (20,2,ma,y)	1233.55
Bollinger Bands Median (20,2,ma,y)	1196.28
Bollinger Bands Bottom (20,2,ma,y)	1159.02
RSI (14)	27
MA (35, Price, ma, 0)	1219.01
MACD (12,26,9)	-19
Signal macd (12,26,9)	-17
macd (12,26,9)_hist	-2

Indicators used: Bollinger Bands, MACD, RSI, Moving Average (35 days) Volume

Global Indices	SENSEX	NIFTY	S&P 500	DJIA	NIKKEI 225
	37,270.82 (+0.34%)	11,035.70 (+0.30%)	2,992.68 (+0.45%)	27,045.75 (+0.51%)	21,597.76 (+0.96%)



Disclaimers: This MARKET SUMM is prepared to timely update the market participants about the Nepalese stock market before the Market opens for the day. The information and data herein should not be construed as an investment advice or recommendation. Should the investors choose to act based on this report, it shall be entirely at their own risk and KCL Astute shall not be liable, for any loss or damages incurred thereby. Unless otherwise specifically stated, the above data concerns the previous trading day.

KCL Astute Capital Limited
 Address: Sundar Bhawan, Hattisar, Kathmandu
 Contact No. 977-1-4429149 | 4429150
 Email: info@kclastute.com