



MARKET SUMMARY		
NEPSE	1,128.86	0.12%
Total Turnover (Rs.)	202,714,022	-13.81%
Share Volume	687,336	-12.16%
Total Transactions	4,982	-10.91%
Total Market Cap. (Rs. Mill)	1,378,069.62	0.04%
Floated Market Cap (Rs. Mill)	481,948.3	0.02%

MARKET CAP TO GDP RATIO	45.82% ▲
-------------------------	----------

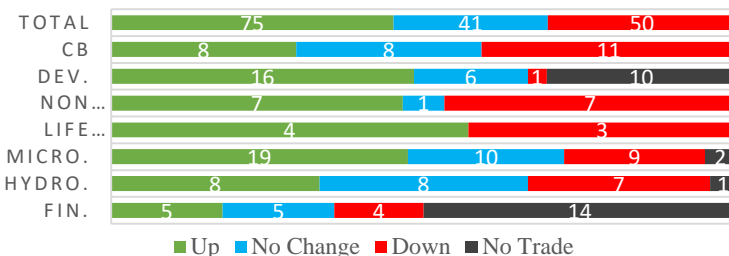
WEIGHTAGE ON MARKET CAP	
Commercial Banks	51.51%
Development Bank	5.25%
Finance	3.46%
Microfinance	6.46%
Life Insurance	7.94%
Non-life Insurance	6.62%
Hydropower	5.74%
Hotel	1.66%
Manufacturing And Processing	2.49%
Trading	0.11%
Others	8.78%
NTC	7.67%

Top Gainers	CHLBS, KPCL
Top Losers	BARUN, SIL, CORBL
Top Stocks by Shares Traded	UPPER, NCCB, NMB
Top Stocks by Transactions	UPPER, SLBSL, NLIC
Top Stocks by Turnover	UPPER, NCCB, NMB
Top Brokers by Turnover	4, 38, 39

NEPSE STATISTICS	
Average Return	16.29%
Standard Deviation	17.33%
Standard Error	1.14%
Skewness	0.45
Kurtosis	3.41

Notes: NEPSE Index from 2069.04.01 –2075.10.28. Avg. annual trade day's 229. Lognormal return is used. Skewness shows market is asymmetrically skewed to right, indicating average return of 16.29% more affected by outliers. Further excess kurtosis shows fat tail and more peaked distribution than normal.

TRADED SCRIPTS STATS



MARKET OVERVIEW

NEPSE made a minor gain of 1.34 points on Monday, closing at 1128.86. However, the Turnover shrank further to Rs.20.27 crores through the trade of 687,336 unit shares from 4,982 Transactions of 166 Companies scripts. Sensitive, Float and Sensitive Float index fell by 0.19, 0.1 and 0.06 points respectively.

Only the Banking and Manu. & Pro. Sub-Indices closed Red which lost the point of 1.48 and 10.24 respectively. Rest sub-indices closed Green on the day. Life insurance, Development Banks and Hotels rose highest with a rise of 24.42, 13.71 and 13.34 points respectively. Microfinance and Non-Life Insurance each made 10.45 and 10.21 points.

CORBL, BARUN underperformed the most as compared to its sector performance while SIFC, KPCL, CHLBS outperformed. KPCL, NLG, GLICL were the most volatile stocks. CHLBS traded at all-time low today and SPDL, BARUN, AKPL and KPCL traded at all-time low. NABIL, BPCL, SLBBL are trading closer to 52 weeks low while JEFL, SLBSL are trading near to 52 weeks high.

MAJOR MARKET NEWS

- 📌 BOKL Q2 Report – Net profit rose by 33.71% to Rs.73.75 crores; EPS Rs.20.86, BVPS Rs.186.60.
- 📌 NICL Q2 Report – Net profit rose by 71.20% to Rs.7.32 crores; EPS Rs.23.72, BVPS Rs.181.77
- 📌 UMHL Q2 Report – Net profit rose by 1.06% to Rs.5.55 crores; EPS Rs.9.66, BVPS Rs.106.02.
- 📌 API Q2 Report – Net profit rose by 62.91% to Rs.5.11 crores; EPS Rs.9.01, BVPS Rs.109.91.
- 📌 EIC Q2 Report – Net profit rose by 5.87% to Rs.2.51 crores; EPS Rs.18.83, BVPS Rs.402.91.
- 📌 Sanima Insurance Company Ltd. (SAICL) earned Net profit of Rs.1.28 crores till Q2 Report.
- 📌 Prabhu Life Insurance Ltd. earned Net Profit of Rs.2.74 crores till Q2 Report.
- 📌 Central Finance Ltd. to propose 7% cash dividend in its coming AGM; received approval from NRB
- 📌 KPCL Q2 Report – Net profit rose by 69.85% to Rs.2.03 crores; EPS Rs.6.78, BVPS Rs.100.86.
- 📌 AKPL Q2 Report – Earned Net profit of Rs. 6.26 crores; BVPS Rs.99.01.
- 📌 MPFL Q2 Report – Net profit rose by 184.16% to Rs.36.03 lakhs; EPS Rs.12.01, BVPS Rs.156.33.
- 📌 GLBSL Q2 Report – Earned Net profit of Rs.40.91 lakhs; EPS Rs.15.78, BVPS Rs.100.51.



Shivam Cement proposed IPO (for General Public) issue price is reduced to Rs.300 (Rs.100 face value + Rs.200 premium). Similarly, the issue price for IPO to Locals is down to Rs.200. Locals who had earlier subscribed the shares at Rs.300 can now apply for additional shares with the money that rest after pricing the shares with Rs.200. The company had earlier proposed to issue IPO at price Rs.400 to Public and Rs.300 to Locals.

Major Events (Today)

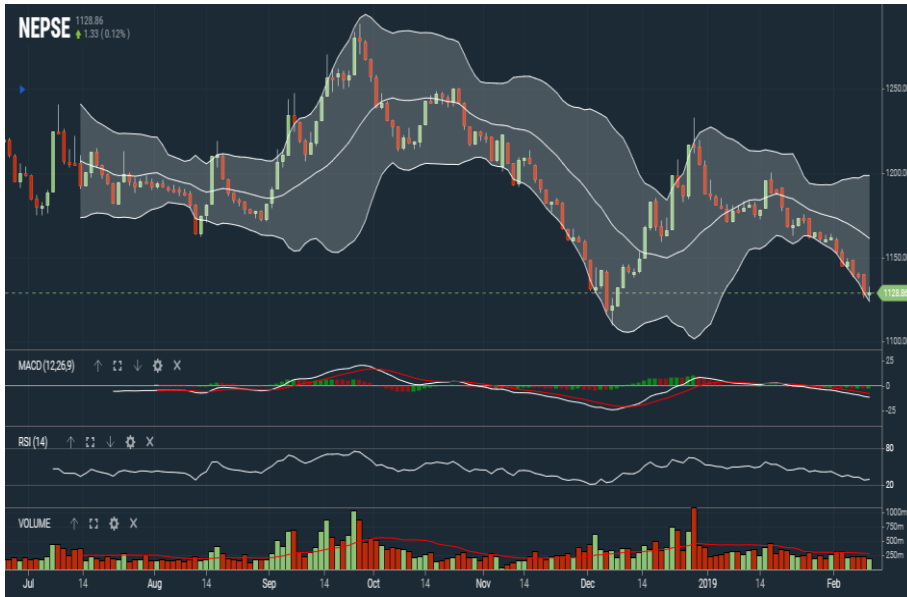
IPO: Universal Power Company Limited is issuing 9,327,410 units IPO shares to the General Public; Issue to remain open till 29th Poush 2075. (Last day)

GLOBAL INDICES		
SENSEX	36,395.03	-151.45
NIFTY	10,888.80	-54.80
S&P 500	2,710.75	+2.87
DJIA	25,109.29	+2.96
NIKKEI 225	20,333.17	-418.11

	Scrip Name	Ticker	LTP
UNDER PRICED	Nepal Bank Ltd.	NBL	285.00
	Bank of Kathmandu Ltd.	BOKL	240.00
	Laxmi Bank Limited	LBL	193.00
	Nepal Bangladesh Bank Limited	NBB	183.00
	Agriculture Development Bank Ltd.	ADBL	332.00
FAIRLY PRICED	Kumari Bank Limited	KBL	235.00
	Machhapuchhre Bank Limited	MBL	208.00
	Siddhartha Bank Limited	SBL	283.00
	Himalayan Bank Limited	HBL	430.00
	Sanima Bank Limited	SANIMA	296.00
OVER PRICED	Nabil Bank Limited	NABIL	825.00
	Everest Bank Limited	EBL	516.00
	Nepal Investment Bank Limited	NIB	516.00
	NIC Asia Bank Ltd.	NICA	386.00
	Nepal SBI Bank Limited	SBI	377.00

Notes: # Above pricing is performed by averaging the prices derived as per P/E, P/B and 180 days closing averages. Based on 25 CB's Published Q2 75/76 data.
Harmonic Mean of industries is carried for Pricings.

NEPSE TECHNICAL OUTLOOKS



Date / Time	28.10.2075
Close	1,128.86
Open	1,127.70
High	1,132.69
Low	1,124.42
Turnover	202,714,022
Bollinger Bands Top Bollinger Bands (20,2,ma,y)	1,198.53
Bollinger Bands Median Bollinger Bands (20,2,ma,y)	1,161.17
Bollinger Bands Bottom Bollinger Bands (20,2,ma,y)	1,123.81
RSI (14)	29
MA (20, Volume, ma, 0)	281m
MACD (12,26,9)	-12
Signal macd (12,26,9)	-8
macd (12,26,9)_hist	-4

Indicators used: Bollinger Bands, MACD, RSI, Moving Average (20 days) Volume



Disclaimers: This MARKET SUMM is prepared to timely update the market participants about the Nepalese stock market before the Market opens for the day. The information and data herein should not be construed as an investment advice or recommendation. Should the investors choose to act based on this report, it shall be entirely at their own risk and KCL Astute shall not be liable, for any loss or damages incurred thereby. Unless otherwise specifically stated, the above data concerns the previous trading day.

KCL Astute Capital Limited

Address: SundarBhawan, Hattisar, Kathmandu
Contact No. 977-1-4429149 | 4429150, Email: info@kclastute.com