



MARKET SUMMARY		
NEPSE	1,291.96	-0.43%
Total Turnover (Rs.)	947,347,776	+86.51%
Share Volume	3,585,695	+87.95%
Total Transactions	6,937	+1.06%
Total Market Cap. (Rs. Mill)	1,603,591.17	-0.43%
Floated Market Cap (Rs. Mill)	562,918.53	-0.43%

MARKET CAP TO GDP RATIO	53.32%	▼
-------------------------	--------	---

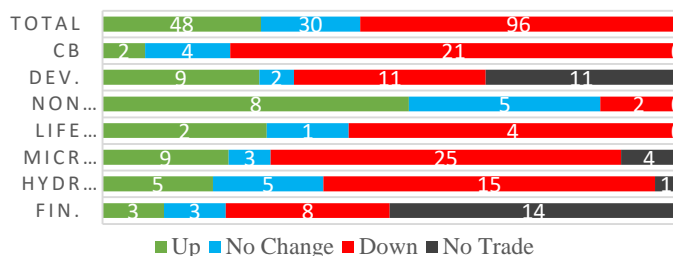
WEIGHTAGE ON MARKET CAP	
Commercial Banks	53.20%
Development Bank	4.91%
Finance	3.04%
Microfinance	6.02%
Life Insurance	8.08%
Non-life Insurance	6.33%
Hydropower	5.44%
Hotel	1.65%
Manufacturing And Processing	3.64%
Trading	0.09%
Others	7.59%
NTC	6.60%

Top Gainers	SIC, NHDL, HDL
Top Losers	PROFL, MPFL, GHL
Top Stocks by Shares Traded	SBBPO, NCCB, SHIVM
Top Stocks by Transactions	SHIVM, PIC, NCCB
Top Stocks by Turnover	SBBLPO, SHIVM, NIL
Top Brokers by Turnover	33, 50, 34

NEPSE STATISTICS	
Average Return	17.65%
Standard Deviation	17.21%
Standard Error	1.14%
Skewness	0.45
Kurtosis	3.38

Notes: NEPSE Index from 2069.04.01 – 2076.01.26. Avg. annual trade day's 229. Lognormal return is used. Skewness shows market is asymmetrically skewed to right, indicating average return of 17.65% more affected by outliers. Further excess kurtosis shows fat tail and more peaked distribution than normal.

TRADED SCRIPTS STATS



MARKET OVERVIEW

NEPSE closed the week's trade with a bearish candle reporting a marginal loss of 5.64 points closing at 1291.96 on Thursday. The highest index reached throughout the day was 1302.62 while the lowest index reached was 1290.11. Turnover, share volume and total transactions all increased significantly by 86.51%, 87.95% and 1.06% respectively. The trade of 174 scripts resulted in a total turnover of Rs. 94.73 crores. Sensitive, Float and Sensitive Float reported a loss of 1.55, 0.41 and 0.5 points respectively.

Most of the sectors closed red at the end of the day except Non-Life Insurance and Manu & Pro which reported gain of 50.21 and 36.09 points respectively. Sectors to lose the most at the end of the trading day were Life Insurance followed by Hotels and Banking which reported loss of 53.88, 12.12 and 8.31 points respectively. Microfinance and Development Bank lost by 8.18 and 7.68 points respectively.

MPFL, KNBL, and RADHI underperformed the most as compared to its sector performance while NHDL, SIC, and HDL outperformed its respective sectors. HDL, SHIVM and SIC are the most volatile stock that traded throughout the day. KMFL, DHPL and AKJCL are trading closer to 52 weeks low while SIC, SEF, and SBBLPO are trading near to 52 weeks high.

SIC is the top gainer which gained by 8.51% at the end of the trading day. Whereas, PROFL hit negative circuit by losing 9.24%.

MAJOR MARKET NEWS

- IPO of Gurans Laghubitta Bittiya Sanstha Ltd is allotted on Thursday.
- ADBL has published its financial report for 3rd Quarter 75/76. The net profit of the company has increased by 23.09% on a y-o-y basis. EPS and BVPS stands at Rs. 29.10 and Rs. 168.31 respectively.
- PCBL has published its financial report for 3rd Quarter 75/76. The net profit of the company has increased by 31.36% on a y-o-y basis. EPS and BVPS stands at Rs. 25.69 and Rs. 158.48 respectively.
- NCCB has published its financial report for 3rd Quarter 75/76. The net profit of the company has increased by 31.08% on a y-o-y basis. EPS and BVPS stands at Rs. 24.70 and Rs. 174.66 respectively.



☑ UMB has published its financial report for 3rd Quarter 75/76. The net profit of the company has increased by 75.08% on a y-o-y basis. EPS and BVPS stands at Rs. 54.66 and Rs. 151.39 respectively.

Major Events (Today)

- ☑ Issue open for 60%, 50% and 50% right shares of ALICL, GLICL and GBLBS.
- ☑ UMB and CBL is selling its unsold right shares via auction. The bids for the auction will be accepted till 2nd Jestha, 2076 and 9th Jestha, 2076 respectively.
- ☑ IPO of Swabhiman and Janasewi Laghubitta is open for issuance till 31st Baisakh, 2076.

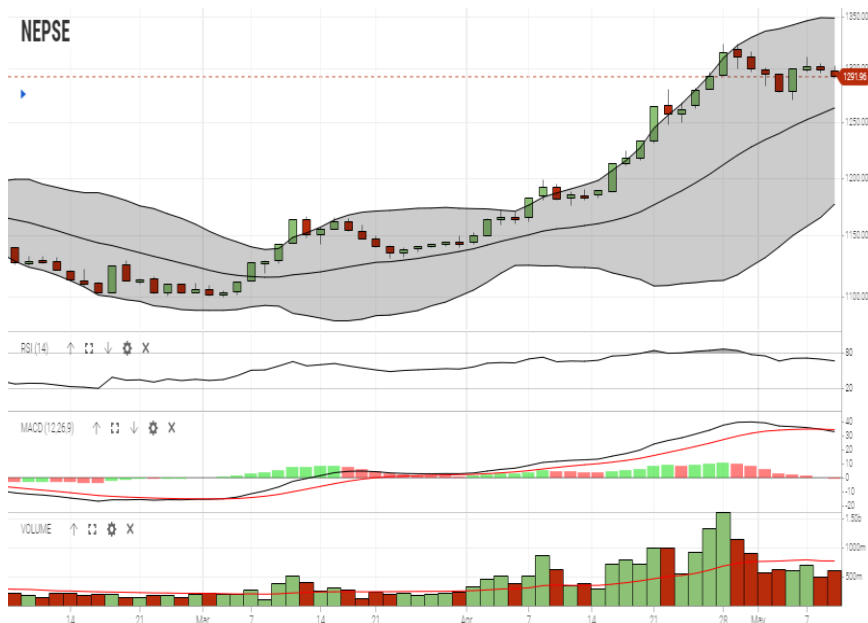
	Scrip Name	Ticker	LTP
UNDER PRICED	Nepal Bank Ltd.	NBL	312.00
	Kumari Bank Ltd.	KBL	223.00
	Civil Bank Ltd.	CBL	152.00
	Agriculture Development Bank Ltd.	ADBL	388.00
	Bank of Kathmandu Ltd.	BOKL	276.00
FAIRLY PRICED	Citizen Bank International Ltd.	CZBIL	224.00
	Century Commercial Bank Ltd	CCBL	176.00
	Nepal Credit and Commerce Ltd.	NCCB	246.00
	Prabhu Bank Ltd.	PRVU	281.00
	Nepal Bangladesh Bank Limited	NBB	228.00
OVER PRICED	Standard Chartered Bank Limited	SCB	690.00
	Everest Bank Limited	EBL	665.00
	Nepal SBI Bank Limited	SBI	483.00
	Himalayan Bank Limited	HBL	578.00
	NIC Asia Bank Limited	NICA	488.00

Notes: # Above pricing is performed by averaging the prices derived as per P/E, P/B and 180 days closing averages. Based on Published Q2 75/76 data.

Harmonic Mean of industries is carried for Pricings.

GLOBAL INDICES		
SENSEX	37,558.91	-230.22
NIFTY	11,301.80	-57.65
S&P 500	2,879.42	-4.63
DJIA	25,967.33	+2.24
NIKKEI 225	21,402.13	-200.46

NEPSE TECHNICAL OUTLOOKS



Indicators used: Bollinger Bands, MACD, RSI, Moving Average (20 days) Volume

Date / Time	26.01.2076
Close	1,291.96
Open	1,297.57
High	1,302.62
Low	1,290.11
Turnover	947,347,776
Bollinger Bands Top Bollinger Bands (20,2,ma,y)	1,348.79
Bollinger Bands Median Bollinger Bands (20,2,ma,y)	1,262.88
Bollinger Bands Bottom Bollinger Bands (20,2,ma,y)	1,176.98
RSI (14)	67
MA (20, Volume, ma, 0)	789m
MACD (12,26,9)	33
Signal macd (12,26,9)	34
macd (12,26,9)_hist	-1



Disclaimers: This MARKET SUMM is prepared to timely update the market participants about the Nepalese stock market before the Market opens for the day. The information and data herein should not be construed as an investment advice or recommendation. Should the investors choose to act based on this report, it shall be entirely at their own risk and KCL Astute shall not be liable, for any loss or damages incurred thereby. Unless otherwise specifically stated, the above data concerns the previous trading day.

KCL Astute Capital Limited

Address: Sundar Bhawan, Hattisar, Kathmandu

Contact No. 977-1-4429149 | 4429150, Email: info@kclastute.com