



MARKET OVERVIEW

MARKET SUMMARY		
NEPSE	1,295.03	+0.24%
Total Turnover (Rs.)	847,699,661	-10.52%
Share Volume	2,669,059	-25.56%
Total Transactions	8,013	+17.57%
Total Market Cap. (Rs. Mill)	1,607,401.14	+0.24%
Floated Market Cap (Rs.Mill)	563,859,83	+0.17%

MARKET CAP TO GDP RATIO	53.44% ▲
--------------------------------	-----------------

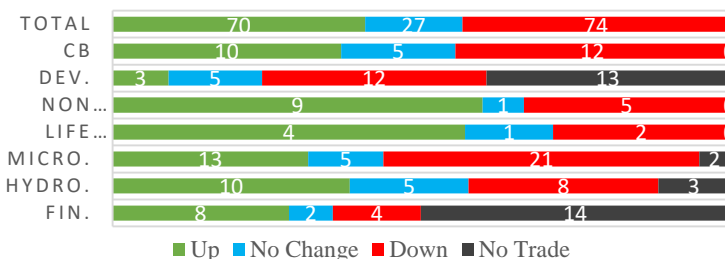
WEIGHTAGE ON MARKET CAP	
Commercial Banks	53.05%
Development Bank	4.87%
Finance	3.04%
Microfinance	6.00%
Life Insurance	8.05%
Non-life Insurance	6.40%
Hydropower	5.42%
Hotel	1.73%
Manufacturing And Processing	3.78%
Trading	0.09%
Others	7.56%
NTC	6.56%

Top Gainers	SHIVM, PIC, OHL
Top Losers	SLBS, NEF, SPDL
Top Stocks by Shares Traded	SBBLPO, SHIVM, NBL
Top Stocks by Transactions	SHIVM, PIC, SIC
Top Stocks by Turnover	SBBLPO, SIC, SHIVM
Top Brokers by Turnover	33, 50, 34

NEPSE STATISTICS	
Average Return	17.64%
Standard Deviation	17.20%
Standard Error	1.14%
Skewness	0.45
Kurtosis	3.38

Notes: NEPSE Index from 2069.04.01 – 2076.01.29. Avg. annual trade day's 229. Lognormal return is used. Skewness shows market is asymmetrically skewed to right, indicating average return of 17.64% more affected by outliers. Further excess kurtosis shows fat tail and more peaked distribution than normal.

TRADED SCRIPTS STATS



NEPSE started the week's trade with a bullish candle reporting a marginal gain of 3.07 points closing at 1295.03. The highest index reached throughout the day was 1295.03 while the lowest index reached was 1284.17. Turnover and share volume decreased by 10.52% and 25.56% respectively while total transactions saw an increase by 17.57%. The trade of 171 scripts resulted in a total turnover of Rs. 84.77 crores. Sensitive, Float and Sensitive Float reported a gain of 0.18, 0.17 and 0.3 points respectively.

Majority of the sectors closed red at the end of the day except Hotels, Finance, Non-Life Insurance and Manu & Pro which reported gain of 100.24, 0.41, 76.04 and 98.79 points respectively. Sectors to lose the most at the end of the trading day were Life Insurance followed by Development Bank and Microfinance which reported loss of 10.03, 7.85 and 1.60 points respectively. Hydro Power and Banking lost by 1.21 and 0.56 respectively.

SLBS, HDL and EIC underperformed the most as compared to its sector performance while PIC, NHDL and SHIVM outperformed its respective sectors. HDL, SHIVM and OHL are the most volatile stock that traded throughout the day. BARUN, KMFL, and KKHC are trading closer to 52 weeks low while SHIVM, HDL and GILB are trading near to 52 weeks high.

SHIVM and PIC hit positive circuit by gaining 9.98% and 9.87% respectively at the end of the trading day. Whereas, SLBS is the top loser that lost by 7.26%.

MAJOR MARKET NEWS

- IPO of Janasewi Laghubitta Bittiya Sanstha Ltd is oversubscribed by 8.18 times in its second day of issuance.
- IPO of Swabimaan Laghubitta Bittiya Sanstha Ltd is oversubscribed by 18.68 times in its second day of issuance.
- BPCL has published its financial report for 3rd Quarter 75/76. The net profit of the company has increased by 13.90% on a y-o-y basis. EPS and BVPS stands at Rs. 30.77 and Rs. 278.71 respectively.
- OHL has published its financial report for 3rd Quarter 75/76. The net profit of the company has increased by 6.32% on a y-o-y basis. EPS and BVPS stands at Rs. 19.31 and Rs. 200.66 respectively.



☑ GDBL has published its financial report for 3rd Quarter 75/76. The net profit of the company has increased by 14.66% on a y-o-y basis. EPS and BVPS stands at Rs. 18.93 and Rs. 136.66 respectively.

Major Events (Today)

- ☑ Issue open for 50% and 50% right shares of GBLBS, and GLICL.
- ☑ UMB and CBL is selling its unsold right shares via auction. The bids for the auction will be accepted till 2nd Jestha, 2076 and 9th Jestha, 2076 respectively.
- ☑ IPO of Swabhimaan and Janasewi Laghubitta is open for issuance till 31st Baisakh, 2076.

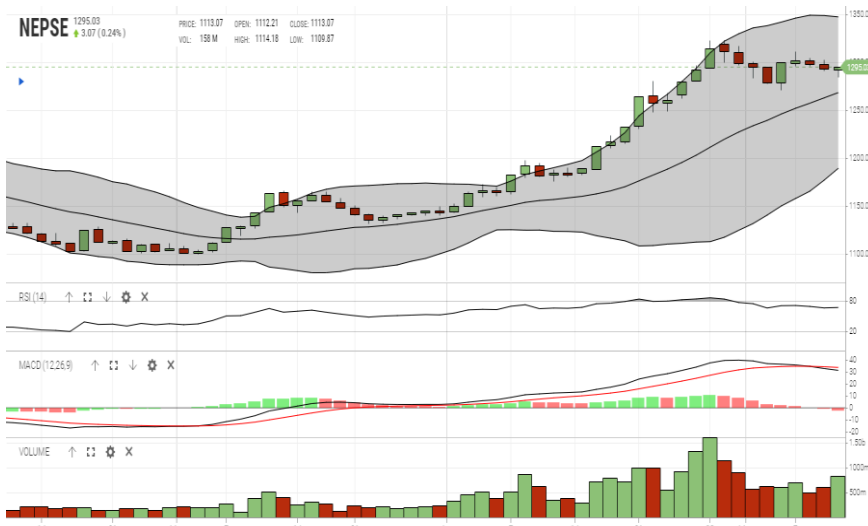
GLOBAL INDICES		
SENSEX	37,462.99	-95.92
NIFTY	11,278.90	-22.90
S&P 500	2,881.40	+114.01
DJIA	25,967.33	+2.24
NIKKEI 225	21,402.13	-200.46

	Scrip Name	Ticker	LTP
UNDER PRICED	Nepal Bank Ltd.	NBL	310.00
	Kumari Bank Ltd.	KBL	221.00
	Civil Bank Ltd.	CBL	151.00
	Bank of Kathmandu Ltd.	BOKL	274.00
	Agriculture Development Bank	ADBL	390.00
FAIRLY PRICED	Century Commercial Bank Ltd	CCBL	174.00
	Citizen Bank International Limited	CZBIL	225.00
	Laxmi bank Ltd.	LBL	225.00
	Nepal Bangladesh Bank Limited	NBB	226.00
	Nepal Credit and Commercial Bank	NCCB	246.00
OVER PRICED	Standard Chartered Bank Limited	SCB	689.00
	Everest Bank Limited	EBL	667.00
	Himalayan Bank Limited	HBL	589.00
	Nepal SBI Bank Limited	SBI	487.00
	NIC Asia Bank Limited	NICA	498.00

Notes: # Above pricing is performed by averaging the prices derived as per P/E, P/B and 180 days closing averages. Based on Published Q2 75/76 data.

Harmonic Mean of industries is carried for Pricings.

NEPSE TECHNICAL OUTLOOKS



Indicators used: Bollinger Bands, MACD, RSI, Moving Average (20 days) Volume

Date / Time	29.01.2076
Close	1,295.3
Open	1,291.16
High	1,295.03
Low	1,284.17
Turnover	847,699,661
Bollinger Bands Top Bollinger Bands (20,2,ma,y)	1,347.39
Bollinger Bands Median Bollinger Bands (20,2,ma,y)	1,268.40
Bollinger Bands Bottom Bollinger Bands (20,2,ma,y)	1,189.42
RSI (14)	68
MA (20, Volume, ma, 0)	796m
MACD (12,26,9)	31
Signal macd (12,26,9)	34
macd (12,26,9)_hist	-2



Disclaimers: This MARKET SUMM is prepared to timely update the market participants about the Nepalese stock market before the Market opens for the day. The information and data herein should not be construed as an investment advice or recommendation. Should the investors choose to act based on this report, it shall be entirely at their own risk and KCL Astute shall not be liable, for any loss or damages incurred thereby. Unless otherwise specifically stated, the above data concerns the previous trading day.

KCL Astute Capital Limited

Address: Sundar Bhawan, Hattisar, Kathmandu

Contact No. 977-1-4429149 | 4429150, Email: info@kclastute.com