



NEPSE Index – Tuesday



MARKET SUMMARY

NEPSE	1,231.07	-0.23%
Total Turnover (Rs.)	481,629,760	+53.99%
Share Volume	1,896,454	+4.44%
Total Transactions	9,375	-14.50%
Total Market Cap. (Rs. Mill)	1,559,623.34	-0.23%
Floated Market Cap (Rs.Mill)	559,489.27	-0.17%

MARKET CAP TO GDP RATIO **51.86%** ▼

WEIGHTAGE ON MARKET CAP

Commercial Banks	52.54%
Development Bank	5.11%
Finance	2.88%
Microfinance	6.31%
Life Insurance	7.22%
Non-life Insurance	5.48%
Hydropower	6.95%
Hotel	1.73%
Manufacturing And Processing	4.02%
Trading	0.10%
Others	7.66%
NTC	6.59%

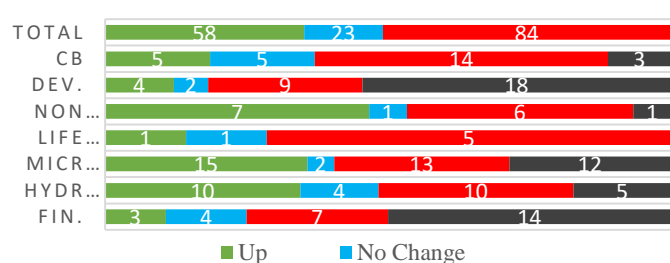
Top Gainers	UMHL, WMBF, NAGRO
Top Losers	NLG, PICL, NSEWA
Top Stocks by Shares Traded	MBL, LBL, MNBBLP
Top Stocks by Transactions	RHPL, SJCL, NADEP
Top Stocks by Turnover	MBL, LBL, MNBBLP
Top Brokers by Transactions	34, 49, 58

NEPSE STATISTICS

Average Return	16.23%
Standard Deviation	16.95%
Skewness	0.46
Kurtosis	3.52

Notes: NEPSE Index from 2069.04.01 – 2076.04.28. Avg. annual trade day's 229. Lognormal return is used. Skewness shows market is asymmetrically skewed to right, indicating average return of 16.23% more affected by outliers. Further excess kurtosis shows fat tail and more peaked distribution than normal.

TRADED SCRIPTS STATS



MAJOR MARKET NEWS

- Market closed with a marginal loss of 2.78 points on Tuesday; Index closed at 1231.07.
- Sensitive, Float and Sensitive Float Index all by dropped 0.58, 0.16 and 0.06 points respectively.
- The turnover on the trading day increased significantly by 53.99%.
- 12% bonus shares of SLICL is listed on NEPSE for trading.
- All Sub-indices closed Red on the day, except Mutual Fund. Hotels losing the most.
- LICN is distributing 34.46% bonus shares and 35.53% cash dividend to its shareholders.
- AHPC Q4 75/76 y-o-y Net profit increased by 149.42% to Rs.5.33 crores; EPS Rs.5.74 BVPS Rs.108.34
- GBBL Q4 75/76 y-o-y Net profit increased by 26.33% to Rs.59.23 crores; EPS Rs.21.24 BVPS Rs.135.46
- HGI Q4 75/76 y-o-y Net profit increased by 40.10% to Rs.19.85 crores; EPS Rs.19.33 BVPS Rs.174.10
- LBBL Q4 75/76 y-o-y Net profit increased by 71.80% to Rs.55.74 crores; EPS Rs.25.22 BVPS Rs.177.40
- Price adjusted for 15% cash dividend of LVF1.
- FMDBL has announced 17% bonus shares and cash dividend for tax purposes to its shareholders.
- Rasuwegadhi Hydropower Company Limited has announced the lock in period of 3 years to the below shareholders:
 - a) Employees of EPF
 - b) Employees of Rasuwagadhi
 - c) Employees of NEA, CHCL and local level officers of Rasuwa District
 - d) Savers of EPF
 - e) If THESE shares are found traded, shareholders are subject to fines accordingly.

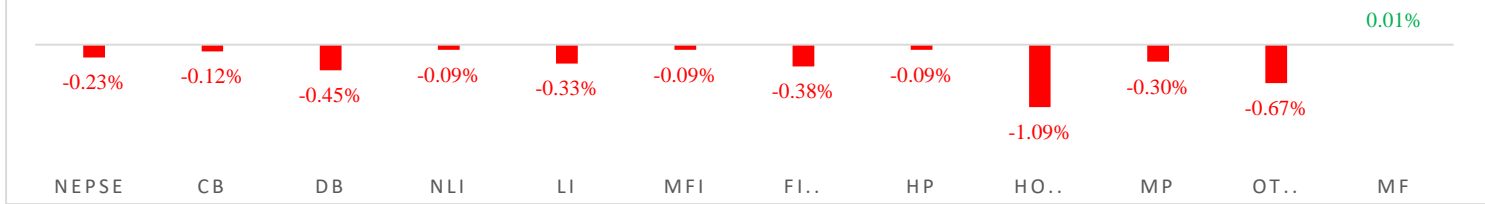
Today Events (Wednesday)

- Book Closure of SLICL: 70% right shares
- NFO Alert:** SIGS2 worth Rs.1.40 billion (140 million units at Rs.10 each). *Issue date extended.*
- NFO Alert:** NMB 50 worth Rs.1.20 billion (120 million units at Rs.10 each). *Issue date extended.*
- NFO Alert:** NIC ASIA Balance Fund worth Rs.1.25 billion (125 million units at Rs.10 each). *Extended*
- Debenture Alert:** 10.25% NIC ASIA Debenture 2083/84
- Debenture Alert:** 10.25% Machhapuchchhre Debenture 2085
- Debenture Alert:** 10% Himalayan Bank Ltd. Debenture 2083

Fundamental Watch: Quarter 4 2075/76 Unaudited Reports



INDICES % CHANGE



Volatile Stock			Stock Movement			Highest Volume – Day 3 (Week 5)		
SBL	(316)	7.07%	UPCL	(85)	Lowest till now	MBL	(259)	525,707 units
SPARS	(619)	6.78%	PPCL	(122)	Lowest till now	LVF1	(9.60)	523,870 units
LBBL	(180)	6.74%				LBL	(215)	416,117 units

Sectorial Outlooks		Stock Pick...	
Bullish	Bearish	Up Pick	Down Pick
Finance	Hydropower	MLBL	SICL
Development Banks	Non-Life Insurance	LBBL	PPCL

Financial Metrics										
S.N.	Ticker	LTP	EPS	BVPS	P/E	P/B	ROE	NPL	CAR	Remarks
1	RADHI	142	11.67	203.83	12.17	0.70	9.85%	-	-	-
1	LBL	215	17.67	141.67	12.17	1.52	13.25%	1.11%	11.33%	-
2	LBBL	180	25.22	177.40	7.14	1.01	15.24%	1.57%	16.56%	-
3	GBBL	215	21.24	135.46	10.12	1.59	16.75%	0.20%	14.40%	-
5	SKBBL	976	62.47	313.56	15.62	3.11	22.14%	0.08%	11.19%	-

Note: If asterisk sign (*) financial metrics denotes Quarter 3 75/76 data, otherwise financial metrics are of Quarter 4 75/76 data.

NEPSE TECHNICAL OUTLOOKS



Indicators used: Bollinger Bands, MACD, RSI, Moving Average (35 days) Volume

Global Indices	SENSEX	NIFTY	S&P 500	DJIA	NIKKEI 225
	36,958.16 (-1.66%)	10,925.85 (-1.65%)	2,882.69 (-1.23%)	25,897.71 (-1.48%)	20,455.44 (-1.11%)



Disclaimers: This MARKET SUMM is prepared to timely update the market participants about the Nepalese stock market before the Market opens for the day. The information and data herein should not be construed as an investment advice or recommendation. Should the investors choose to act based on this report, it shall be entirely at their own risk and KCL Astute shall not be liable, for any loss or damages incurred thereby. Unless otherwise specifically stated, the above data concerns the previous trading day.

KCL Astute Capital Limited

Address: Sundar Bhawan, Hattisar, Kathmandu

Contact No. 977-1-4429149 | 4429150

Email: info@kclastute.com