



MARKET SUMMARY		
NEPSE	1,301.34	+0.49%
Total Turnover (Rs.)	786,412,808	-7.23%
Share Volume	2,392,403	-10.37%
Total Transactions	8,721	+8.84%
Total Market Cap. (Rs. Mill)	1,615,224.06	+0.49%
Floated Market Cap (Rs.Mill)	565,518.39	+0.29%

MARKET CAP TO GDP RATIO	53.44%
-------------------------	--------

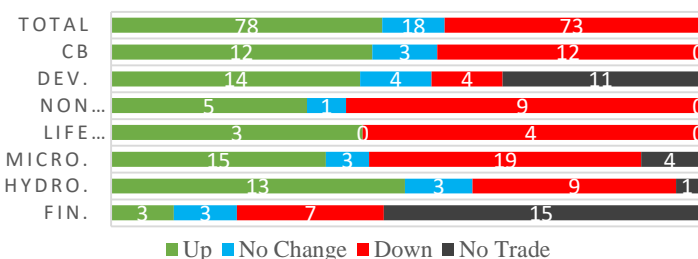
WEIGHTAGE ON MARKET CAP	
Commercial Banks	52.83%
Development Bank	4.89%
Finance	3.00%
Microfinance	5.97%
Life Insurance	7.99%
Non-life Insurance	6.34%
Hydropower	5.56%
Hotel	1.74%
Manufacturing And Processing	3.85%
Trading	0.09%
Others	7.73%
NTC	6.64%

Top Gainers	SHIVM, HIDCL, KMFL
Top Losers	HDL, UMHL, JOSHI
Top Stocks by Shares Traded	SHIVM, CBL, PCBL
Top Stocks by Transactions	SHIVM, UPPER, PCBL
Top Stocks by Turnover	SHIVM, PCBL, PIC
Top Brokers by Turnover	58, 42, 49

NEPSE STATISTICS	
Average Return	17.70%
Standard Deviation	17.20%
Standard Error	1.14%
Skewness	0.45
Kurtosis	3.39

Notes: NEPSE Index from 2069.04.01 – 2076.01.30. Avg. annual trade day's 229. Lognormal return is used. Skewness shows market is asymmetrically skewed to right, indicating average return of 17.70% more affected by outliers. Further excess kurtosis shows fat tail and more peaked distribution than normal.

TRADED SCRIPTS STATS



MARKET OVERVIEW

NEPSE reported a marginal gain of 6.30 points closing at 1301.34 on Monday following the previous day's green candle. The highest index reached throughout the day was 1301.78 while the lowest index reached was 1295.99. Turnover and share volume decreased by 7.23% and 10.37% respectively while total transactions saw an increase by 8.84%. The trade of 169 scripts resulted in a total turnover of Rs. 78.64 crores. Sensitive, Float and Sensitive Float reported a gain of 1.21, 0.28 and 0.1 points respectively.

Majority of the sectors throughout the day saw rise in its sub-indices. Sectors like Manu & Pro, followed by Hydropower and Hotels reported gain of 59.81, 35.46, and 20.64 points respectively. Whereas, sectors to lose the most at the end of the trading day were Non-Life Insurance followed by Life Insurance and Trading reported loss of 25.65, 13.06 and 5.49 points respectively. Banking gained by 0.82 points while Microfinance lost by 1.46 points at the end of the trading day.

UMHL, HDL, and KKHC underperformed the most as compared to its sector performance while SHIVM, CORBL and HIDCL outperformed its respective sectors. HIDCL, SIC and AKPL are the most volatile stock that traded throughout the day. BBC, SMB and NNLB are trading closer to 52 weeks low while GILB, OHL and SHIVM are trading near to 52 weeks high.

SHIVM and HIDCL hit positive circuit by gaining 9.96% and 9.59% respectively at the end of the trading day. Whereas, HDL is the top loser that lost by 6.07%.

MAJOR MARKET NEWS

- SADBIL has published its financial report for 3rd Quarter 75/76. The net profit of the company has decreased by 7.49% on a y-o-y basis. EPS and BVPS stands at Rs. 11.86 and Rs. 122.38 respectively.
- GLICL has published its financial report for 3rd Quarter 75/76. The net profit of the company has increased by 41.03% on a y-o-y basis. EPS and BVPS stands at Rs. 11.76 and Rs. 141.61 respectively.
- SLICL has published its financial report for 3rd Quarter 75/76. The net profit of the company has increased by 40.29% on a y-o-y basis. EPS and



BVPS stands at Rs. 16.15 and Rs. 146.34 respectively.

- ALICL has published its financial report for 3rd Quarter 75/76. The net profit of the company has increased by 63.55% on a y-o-y basis. EPS and BVPS stands at Rs. 5.77 and Rs. 122.56 respectively.

Major Events (Today)

- Issue open for 50% and 50% right shares of GBLBS, and GLICL.
- UMB and CBL is selling its unsold right shares via auction. The bids for the auction will be accepted till 2nd Jestha, 2076 and 9th Jestha, 2076 respectively.
- IPO of Swabhimaan and Janasewi Laghubitta is open for issuance till 31st Baisakh, 2076.

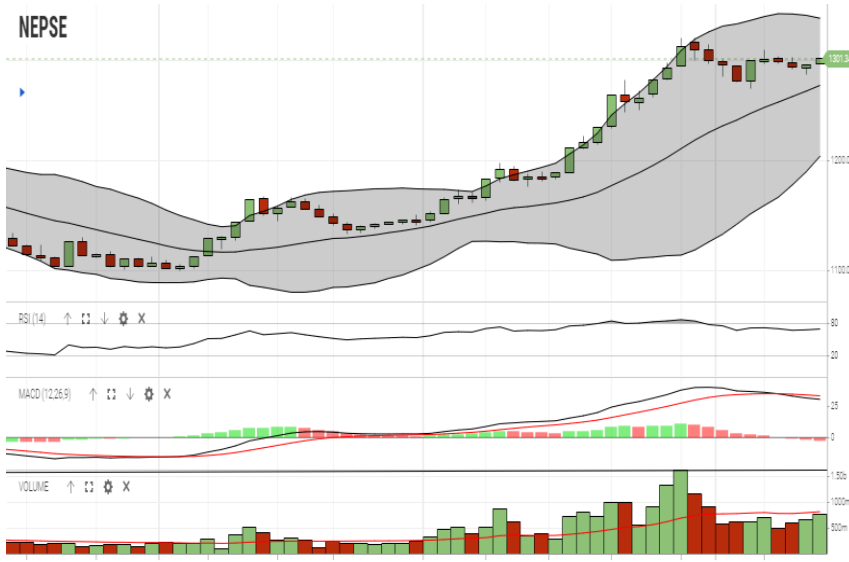
GLOBAL INDICES		
SENSEX	37,090.82	-372.17
NIFTY	11,148.20	-130.70
S&P 500	2,881.40	+10.68
DJIA	25,942.37	+114.01
NIKKEI 225	21,176.24	-168.68

	Script Name	Ticker	LTP
UNDER PRICED	Nepal Bank Ltd.	NBL	309.00
	Kumari Bank Ltd.	KBL	221.00
	Civil Bank Ltd.	CBL	149.00
	Nepal Credit & Commercial Bank	NCCB	249.00
	Agriculture Development Bank	ADBL	386.00
FAIRLY PRICED	Citizen Bank International Limited	CZBIL	224.00
	Mega Bank Nepal Ltd	MEGA	193.00
	Janata Bank Nepal Ltd.	JBNL	203.00
	Century Commercial Bank Ltd	CCBL	173.00
	Nepal Bangladesh Bank Limited	NBB	228.00
OVER PRICED	Standard Chartered Bank Limited	SCB	691.00
	Himalayan Bank Limited	HBL	588.00
	Everest Bank Limited	EBL	668.00
	Nepal SBI Bank Limited	SBI	488.00
	Nabil Bank Limited	NABIL	844.00

Notes: # Above pricing is performed by averaging the prices derived as per P/E, P/B and 180 days closing averages. Based on Published Q3 75/76 data.

Harmonic Mean of industries is carried for Pricings.

NEPSE TECHNICAL OUTLOOKS



Indicators used: Bollinger Bands, MACD, RSI, Moving Average (20 days) Volume

Date / Time	30.01.2076
Close	1,301.34
Open	1,295.99
High	1,301.78
Low	1,295.99
Turnover	786,412,808
Bollinger Bands Top Bollinger Bands (20,2,ma,y)	1,344.23
Bollinger Bands Median Bollinger Bands (20,2,ma,y)	1,274.27
Bollinger Bands Bottom Bollinger Bands (20,2,ma,y)	1,204.31
RSI (14)	69
MA (20, Volume, ma, 0)	807m
MACD (12,26,9)	30
Signal macd (12,26,9)	33
macd (12,26,9)_hist	-3



Disclaimers: This MARKET SUMM is prepared to timely update the market participants about the Nepalese stock market before the Market opens for the day. The information and data herein should not be construed as an investment advice or recommendation. Should the investors choose to act based on this report, it shall be entirely at their own risk and KCL Astute shall not be liable, for any loss or damages incurred thereby. Unless otherwise specifically stated, the above data concerns the previous trading day.

KCL Astute Capital Limited

Address: Sundar Bhawan, Hattisar, Kathmandu

Contact No. 977-1-4429149 | 4429150, Email: info@kclastute.com