



NEPSE Index – Wednesday



MARKET SUMMARY

NEPSE	1,225.9	-0.42%
Total Turnover (Rs.)	257,285,001	-46.58%
Share Volume	1,069,690	-43.60%
Total Transactions	8,048	-14.15%
Total Market Cap. (Rs. Mill)	1,553,960.54	-0.36%
Floated Market Cap (Rs.Mill)	557,104.41	-0.43%

MARKET CAP TO GDP RATIO **51.67%** ▼

WEIGHTAGE ON MARKET CAP

Commercial Banks	52.43%
Development Bank	5.12%
Finance	2.88%
Microfinance	6.33%
Life Insurance	7.27%
Non-life Insurance	5.48%
Hydropower	6.93%
Hotel	1.73%
Manufacturing And Processing	4.02%
Trading	0.10%
Others	7.70%
NTC	6.62%

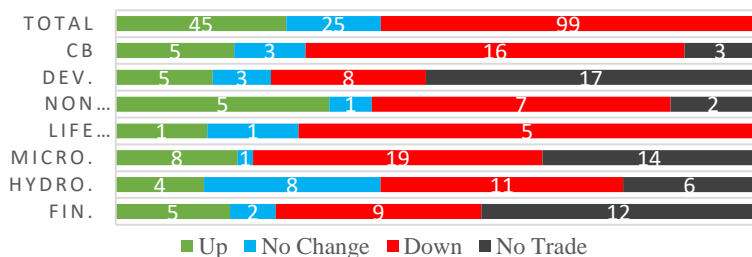
Top Gainers	VLBS, NLG, GHL
Top Losers	WMBF, SMB, GFCL
Top Stocks by Shares Traded	RHPL, NBL, NCCB
Top Stocks by Transactions	RHPL, SJCL, UPPER
Top Stocks by Turnover	NBL, RHPL, NCCB
Top Brokers by Transactions	34, 49, 44

NEPSE STATISTICS

Average Return	16.16%
Standard Deviation	16.94%
Skewness	0.46
Kurtosis	3.53

Notes: NEPSE Index from 2069.04.01 – 2076.04.29. Avg. annual trade day's 229. Lognormal return is used. Skewness shows market is asymmetrically skewed to right, indicating average return of 16.16% more affected by outliers. Further excess kurtosis shows fat tail and more peaked distribution than normal.

TRADED SCRIPTS STATS



MAJOR MARKET NEWS

- 📌 Market closed with a loss of 5.17 points on Wednesday; NEPSE closed at 1225.90.
- 📌 Sensitive, Float and Sensitive Float Index all by dropped 1.22, 0.43 and 0.51 points respectively.
- 📌 Significant fall in market participants was observed as all Transaction, Volume and Turnover fell by massive.
- 📌 Supreme Court has nullified the direction of NRB regarding the age limit for the CEO and Directors of the BFIs. The CEO and Directors who had to vacate the position following the NRB direction, can now join the Company in the same position.
- 📌 NEPSE has listed 27,98,419 units new Share of NIB after JFL acquisition.
- 📌 NABIL Q4 75/76 y-o-y Net profit increased by 7.84% to Rs.4.29 billion; EPS Rs.47.65 BVPS Rs.258.06
- 📌 SCB Q4 75/76 y-o-y Net profit increased by 13.95% to Rs.2.49 billion; EPS Rs.31.15 BVPS Rs.187.08
- 📌 MEGA Q4 75/76 y-o-y Net profit increased by 30.51% to Rs.1.71 billion; EPS Rs.16.55 BVPS Rs.130.93.
- 📌 SRBL Q4 75/76 y-o-y Net profit increased by 15.58% to Rs.1.70 billion; EPS Rs.20.94 BVPS Rs.151.47.
- 📌 NCCB Q4 75/76 y-o-y Net profit increased by 13.81% to Rs.1.52 billion; EPS Rs.21.75 BVPS Rs.178.38.
- 📌 SADBBL Q4 75/76 y-o-y Net profit increased by 20.36% to Rs.33.17 crore; EPS Rs.12.73 BVPS Rs.126.21.
- 📌 UPPER Q4 75/76 y-o-y Net loss reported Rs.5.39 crore; EPS Rs.-0.51 BVPS Rs.93.95.
- 📌 NSEWA Q4 75/76 y-o-y Net profit decreased by 35.88% to Rs.26.08 lakhs; EPS Rs.4.35 BVPS Rs.107.73.
- 📌 LGIL Q4 75/76 y-o-y Net profit increased by 8.84% to Rs.25.98 crores; EPS Rs.29.52 BVPS Rs.200.84.
- 📌 OHL Q4 75/76 y-o-y Net profit increased by 2.40% to Rs.29.78 crores; EPS Rs.27.72 BVPS Rs.209.07.
- 📌 LICN Q4 75/76 y-o-y Net profit increased by 20% to Rs.16.15 crores; EPS Rs.10.81 BVPS Rs.17851.
- 📌 NEPSE has listed 70% Right Shares of SLICL.

Today Events (Thursday)

- 📌 NFO Alert: SIGS2 worth Rs.1.40 billion (140 million units at Rs.10 each). Issue date extended.
- 📌 NFO Alert: NMB 50 worth Rs.1.20 billion (120 million units at Rs.10 each). Issue date extended.
- 📌 NFO Alert: NIC ASIA Balance Fund worth Rs.1.25 billion (125 million units at Rs.10 each). Extended

Fundamental Watch: Quarter 4 2075/76 Unaudited Reports



INDICES % CHANGE

0.01%

-0.42%	-0.58%	-0.03%	-0.21%	-0.38%		-0.17%		-0.65%	-0.60%	-0.36%	-0.01%		-0.45%
NEPSE	CB	DB	NLI	LI	MFI	FI..		HP	HO..	MP	OT..		MF

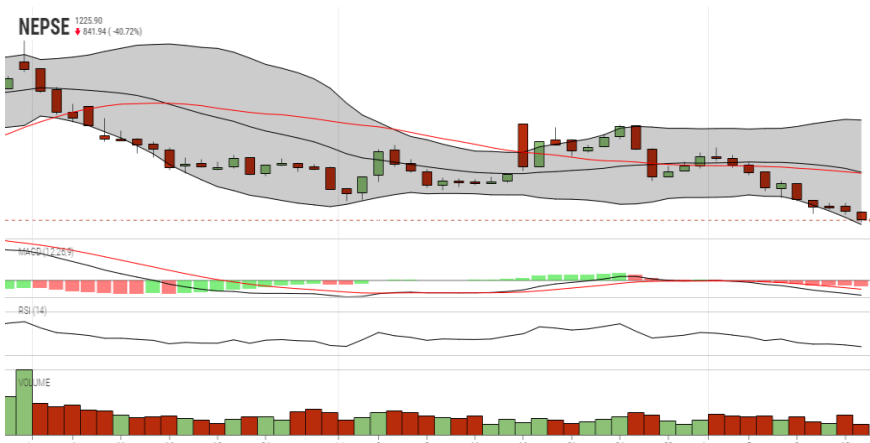
Volatile Stock			Stock Movement			Highest Volume – Day 4 (Week 5)		
NAGRO	(842)	7.96%	UPCL	(85)	Lowest till now	RHPL	(208)	490,276 units
WMBF	(107)	7.48%	DHPL	(62)	Lowest till now	SJCL	(222)	277,436 units
NADEP	(504)	7.11%	KPCL	(86)	Lowest till now	NBL	(324)	199,677 units

Sectorial Outlooks		Stock Pick...	
Bullish	Bearish	Up Pick	Down Pick
-	Banking	UPPER	SBI
-	Non-Life Insurance	JBNL	GBIME

Financial Metrics										
S.N.	Ticker	LTP	EPS	BVPS	P/E	P/B	ROE	NPL	CAR	Remarks
1	NABIL	779	47.65	258.06	16.35	3.02	19.59%	0.74%	12.71%	
1	SCB	646	31.15	187.08	20.74	3.45	17.26%	0.15%	19.90%	
2	SRBL	237	20.94	151.47	11.32	1.56	14.28%	1.03%	13.14%	-
3	NCCB	205	23.58	178.38	8.69	1.15	14.54%	2.78%	14.04%	-
5	LGIL	415	29.52	200.84	14.06	2.07	-	-	-	-

Note: If asterisk sign (*) financial metrics denotes Quarter 3 75/76 data, otherwise financial metrics are of Quarter 4 75/76 data.

NEPSE TECHNICAL OUTLOOKS



Date / Time	29.04.2076
Close	1225.90
Open	1230.98
High	1231.49
Low	1224.43
Bollinger Bands Top (20,2,ma,y)	1288.11
Bollinger Bands Median (20,2,ma,y)	1255.66
Bollinger Bands Bottom (20,2,ma,y)	1223.21
RSI (14)	31
MA (35, ma, 0)	1255.11
MACD (12,26,9)	-9
Signal macd (12,26,9)	-5
macd (12,26,9)_hist	-3

Indicators used: Bollinger Bands, MACD, RSI, Moving Average (35 days) Volume

Global Indices	SENSEX	NIFTY	S&P 500	DJIA	NIKKEI 225
	37,311.53 (+0.96%)	11,029.40 (+0.95%)	2,840.60 (-2.93%)	25,479.42 (-3.05%)	20,319.00 (-1.63%)



Disclaimers: This MARKET SUMM is prepared to timely update the market participants about the Nepalese stock market before the Market opens for the day. The information and data herein should not be construed as an investment advice or recommendation. Should the investors choose to act based on this report, it shall be entirely at their own risk and KCL Astute shall not be liable, for any loss or damages incurred thereby. Unless otherwise specifically stated, the above data concerns the previous trading day.

KCL Astute Capital Limited

Address: Sundar Bhawan, Hattisar, Kathmandu

Contact No. 977-1-4429149 | 4429150

Email: info@kclastute.com