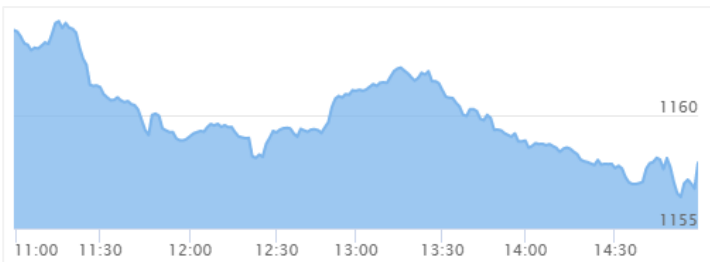




NEPSE Index – Thursday



MARKET SUMMARY

NEPSE	1,157.88	-0.46%
Total Turnover (Rs.)	376,184,491	+10.08%
Share Volume	1,556,790	+3.51%
Total Transactions	6,594	+21.44%
Total Market Cap. (Rs. Mill)	1,470,584.86	-0.46%
Floated Market Cap (Rs. Mill)	531,584.38	-0.40%

MARKET CAP TO GDP RATIO **48.90%** ▼

WEIGHTAGE ON MARKET CAP

Commercial Banks	53.45%
Development Bank	5.42%
Finance	2.92%
Microfinance	6.51%
Life Insurance	6.84%
Non-life Insurance	5.24%
Hydropower	6.41%
Hotel	1.68%
Manufacturing And Processing	4.04%
Trading	0.11%
Others	7.39%
NTC	6.38%

Top Gainers	KPCL, NICGF, NGPL
Top Losers	AHPC, HURJA, NICL
Top Stocks by Shares Traded	LBLPO, KBL, NICA
Top Stocks by Transactions	RHPL, SJCL, KBL
Top Stocks by Turnover	LBLPO, NICA, KBL
Top Brokers by Transactions	49, 57, 44

NEPSE STATISTICS

Average Return	15.17%
Standard Deviation	16.88%
Skewness	0.48
Kurtosis	3.55

Notes: NEPSE Index from 2069.04.01 – 2076.05.26. Avg. annual trade day's 229. Lognormal return is used. Skewness shows market is asymmetrically skewed to right, indicating average return of 15.17% more affected by outliers. Further excess kurtosis shows fat tail and more peaked distribution than normal.

TRADED SCRIPTS STATS

Category	Up	No Change	Down	No Trade
TOTAL	34	25	109	
CB	5	6	13	3
DEV.	4	1	11	17
NON..	2	4	9	
LIFE..	1		6	
MIC..	8	3	21	13
HYD..	6	4	16	3
FIN.	3	5	7	13

Legend: ■ Up ■ No Change ■ Down ■ No Trade

MAJOR MARKET NEWS

- Market closed the weekend trade with the loss of 5.33 points on Thursday; NEPSE Index closed at 1157.88 level.
- Sensitive, Float and Sensitive Float Index dropped 0.98, 0.34 and 0.21 points respectively.
- All Sub-indices closed Red; Hotels and Hydropower losing the most.
- Share Market lost 33.19 points during the week, opening at 1191.07 and closing at 1157.88; Market closed Red in all days of the Week trade.
- Joint Transaction of PCBL and KNBL to start from 29th Bhadra Sunday, after successful acquisition of latter by former.
- NEPSE set the criteria for stocks eligible for margin trade:
 - At least 10,000 shareholders of the company
 - Net Assets ≥ Paid up Capital
 - ≥ 10% dividend in last 2 FY.
 - ≥ 80% Trading history in last FY.
 - AGM held within 6 months of new FY.
- Finance Minister, Dr. Yuvraj Khatiwada tabled 4 Bills in Parliament for Amendment which includes - Amendments in Banks and Financial Institutions Act (BAFIA), 2073, Amendments in Securities Act, 2063, Amendments in Nepal Rastra Bank Act, 2058 and Amendments and unification in public debt management regulations.
- NEPSE revised down the number of constituents in Sensitive Index Basket from 111 to now only 76.
- SEBON direct the CDS & Clearing Ltd. to make the inspection and submit reports regarding openings of Demat Account in unauthorized way.

Today's Events (Sunday)

- Book closure date of NICA and KBL for its upcoming AGM.
- Right Shares Alert:** MNBBL is issuing 20% Right
- Right Shares Alert:** SLICL is issuing 70% Right
- Right Shares Alert:** UIC is issuing 240% Right
- Auction Alert:** NLBBL is auctioning its 87,300 units promoter via auction. *Last day.*

New Fund Offerings (Upcoming)

	Schemes	Units	@ Rs.	Open
1	Sunrise First Mutual Fund	100,000,000	10	Coming Soon



INDICES % CHANGE

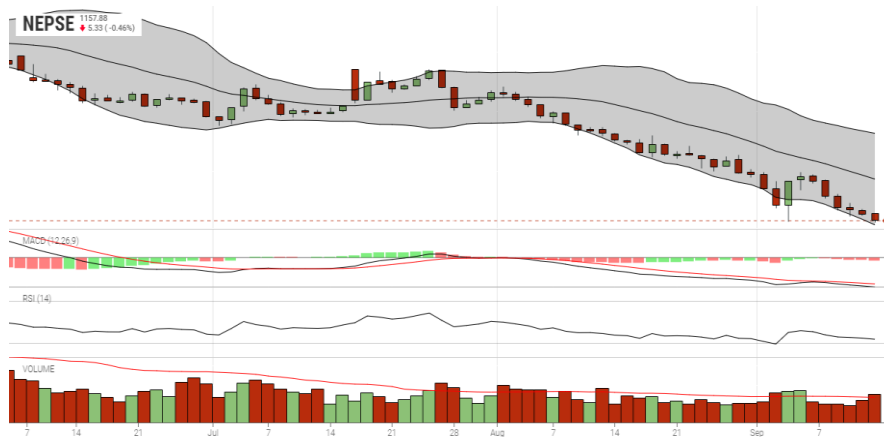
-0.46%	-0.26%	-0.17%	-0.77%	-0.65%	-0.44%	-0.19%	-0.97%	-1.29%	-0.75%	-0.87%	-0.79%
NEPSE	CB	DB	NLI	LI	MFI	FI..	HP	HO..	MP	OT..	MF

Volatile Stocks			Stock Movement			Highest Volume – Week 9		
AHPC	(96)	12.5%	SPDL	(68)	Lowest till now	CBLPO	(100)	400,000 units
AKPL	(137)	11.85%	RHPL	(158)	Lowest till now	PRVUPO	(162)	323,951 units
KPCL	(84)	10.13%	SJCL	(173)	Lowest till now	KBL	(203)	193,687 units

Sectorial Outlooks		Stock Pick...	
Bullish	Bearish	Up Pick	Down Pick
-	Life Insurance	SHVM	OHL
-	Microfinance	LLBS	CBL

Financial Metrics										
S.N.	Ticker	LTP	EPS	BVPS	P/E	P/B	ROE	NPL	CAR	Remarks
1	UPCL	76	1.37	101.19	56.47	0.75	-	-	-	-
1	SIC	520	27.62	191.17	18.83	2.72	15.57%	-	-	-
2	JSLBB	970	73.73	327.01	13.16	2.97	26.99%	2.23%	8.37%	-
3	NIL	379	29.22	195.90	12.97	1.93	16.12%	-	-	-
5	BFC	90	9.92	87.53	9.07	1.03	17.56%	18.46%	17.17%	-

NEPSE TECHNICAL OUTLOOKS



Date / Time	26.05.2076
Close	1157.88
Open	1163.71
High	1164.10
Low	1156.37
Bollinger Bands Top (20,2,ma,y)	1231.52
Bollinger Bands Median (20,2,ma,y)	1192.98
Bollinger Bands Bottom (20,2,ma,y)	1154.43
RSI (14)	26
MA (35, Volume, ma, 0)	332m
MACD (12,26,9)	-19
Signal macd (12,26,9)	-17
macd (12,26,9)_hist	-2

Indicators used: Bollinger Bands, MACD, RSI, Moving Average (35 days) Volume

Global Indices	SENSEX	NIFTY	S&P 500	DJIA	NIKKEI 225
	37,384.99 (+0.76%)	11,075.90 (+0.85%)	3,007.39 (-0.07%)	27,219.52 (+0.14%)	21,988.29 (+1.05%)



Disclaimers: This MARKET SUMM is prepared to timely update the market participants about the Nepalese stock market before the Market opens for the day. The information and data herein should not be construed as an investment advice or recommendation. Should the investors choose to act based on this report, it shall be entirely at their own risk and KCL Astute shall not be liable, for any loss or damages incurred thereby. Unless otherwise specifically stated, the above data concerns the previous trading day.

KCL Astute Capital Limited
 Address: Sundar Bhawan, Hattisar, Kathmandu
 Contact No. 977-1-4429149 | 4429150
 Email: info@kclastute.com