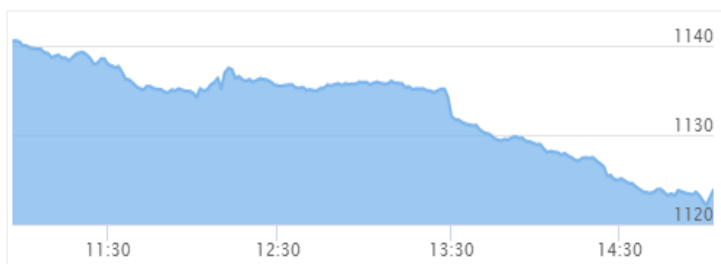




31<sup>st</sup> Bhadra, 2076 Tuesday

Market Summ... concerning previous day's trading Monday"

## NEPSE Index – Monday



## MARKET SUMMARY

NEPSE	1,123.83	-1.42%
Total Turnover (Rs.)	343,918,221	-
Share Volume	1,248,409	+14.51%
Total Transactions	7,547	+4.25%
Total Market Cap. (Rs. Mill)	1,427,339.22	-1.42%
Floated Market Cap (Rs. Mill)	516,546.49	-1.30%

MARKET CAP TO GDP RATIO 47.46% ▼

## WEIGHTAGE ON MARKET CAP

Commercial Banks	53.41%
Development Bank	5.44%
Finance	2.93%
Microfinance	6.57%
Life Insurance	6.78%
Non-life Insurance	5.23%
Hydropower	6.39%
Hotel	1.70%
Manufacturing And Processing	4.06%
Trading	0.12%
Others	7.38%
NTC	6.37%

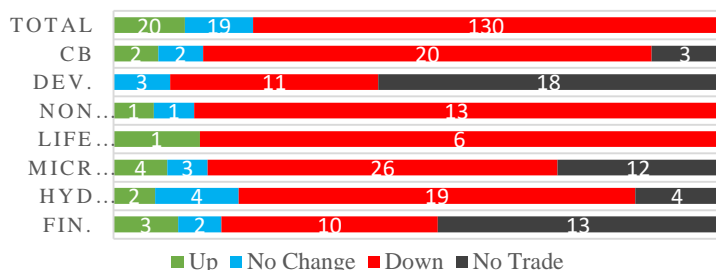
Top Gainers	STC, NMBMF, CHL
Top Losers	NLICL, SPDL, IGI
Top Stocks by Shares Traded	CZBIL, NBL, MLBLPO
Top Stocks by Transactions	RHPL, SJCL, CZBIL
Top Stocks by Turnover	CBBL, NBL, CZBIL
Top Brokers by Transactions	49, 44, 45

## NEPSE STATISTICS

Average Return	14.74%
Standard Deviation	16.89%
Skewness	0.48
Kurtosis	3.53

Notes: NEPSE Index from 2069.04.01 – 2076.05.30. Avg. annual trade day's 229. Lognormal return is used. Skewness shows market is asymmetrically skewed to right, indicating average return of 14.74% more affected by outliers. Further excess kurtosis shows fat tail and more peaked distribution than normal.

## TRADED SCRIPTS STATS



## MAJOR MARKET NEWS

- Market plummet further by 16.18 points on Monday; NEPSE Index closed at 1123.83 level.
- Sensitive, Float and Sensitive Float Index dropped 3.66, 1.09 and 1.04 points respectively.
- Except Trading, remaining Sub-indices closed Red; Others and Life Insurance lost the most.
- SEBON seeks reports from CDSC within a week time, regarding the work progress on reduction of settlement time from T+3 to T+1 duration, Settlement Guarantee Fund, System Audit, Weighted average cost of shares and Supervision guidelines.
- NRB requires the Banks to disclose the name of Shareholders holding more than 0.5% of total shares in its Annual Report. Further disclosure need to be made on fund spent on CSR, Employee Training & Development etc.
- SABSL propose 13% Bonus Dividend and 0.68% Cash for tax purpose, for the FY 2075/76.
- NEPSE has listed 1,14,41,681,.25 units Share of Tinau Mission Development Bank Limited after successful merger between TNBL and MIDBL.
- NEA looking to float 25% of its shares to Public via. IPO; Issue worth Rs.31.25 crores approx.
- 60% Right share of NLG added in SEBON's pipelines.
- SRBL to float "10.25% Sunrise Debentures 2083" worth Rs.3 billion.
- LBL to float "10% Laxmi Bank debenture 2086" worth Rs.2 billion.

## Today's Events (Tuesday)

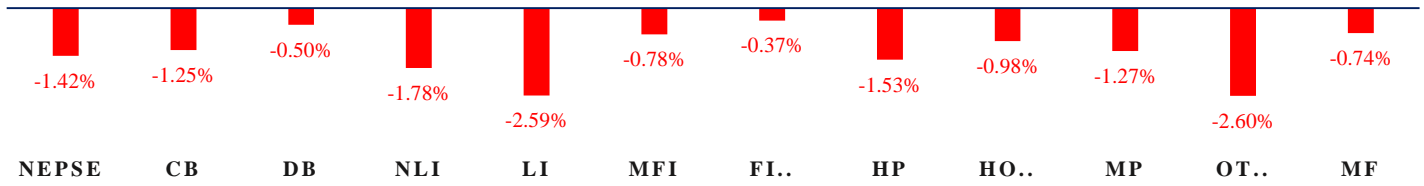
- Right Shares Alert: MNBBL is issuing 20% Right
- Right Shares Alert: SLICL is issuing 70% Right
- Right Shares Alert: UIC is issuing 240% Right

## New Fund Offerings (Upcoming)

Schemes	Units	@ Rs.	Open
1 Sunrise First Mutual Fund	100,000,000	10	Coming Soon



### INDICES % CHANGE

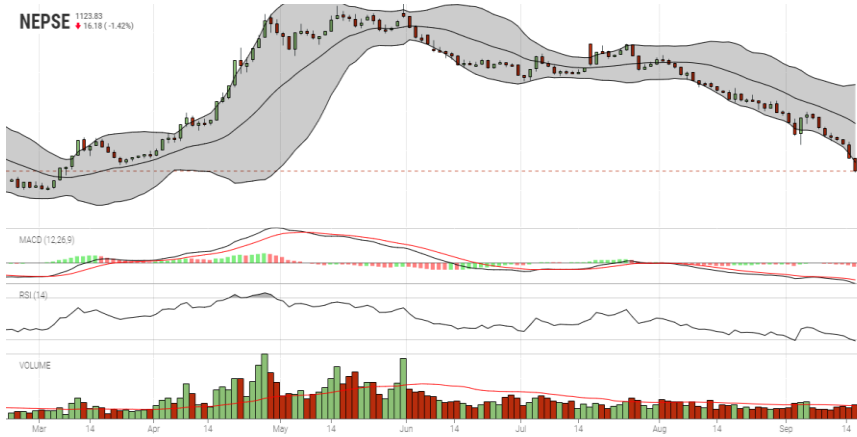


Volatile Stocks			Stock Movement			Highest Volume – Day 2 (Week 10)		
BPCL	(357)	9.07%	AHPC	(95)	Lowest till now	NBL	(310)	114,169 units
FMDBL	(364)	8.78%	AKJCL	(56)	Lowest till now	CZBIL	(217)	95,592 units
MERO	(540)	6.39%	AKPL	(130)	Lowest till now	RHPL	(155)	95,473 units

Sectorial Outlooks		Stock Pick...	
Bullish	Bearish	Up Pick	Down Pick
-	Non-Life Insurance	RLFL	OHL
-	Life Insurance	SABSL	CBL

Financial Metrics										
S.N.	Ticker	LTP	EPS	BVPS	P/E	P/B	ROE	NPL	CAR	Remarks
1	SHIVM	495	34.16	194.6	14.49	2.54	20.29%	-	-	-
2	LLBS	655	45.84	201.11	14.29	3.26	25.61%	1.26%	13.31%	-
2	JSLBB	948	73.73	327.01	12.86	1.83	26.99%	2.23%	8.37%	-
3	NIL	359	29.22	195.90	12.29	1.83	16.12%	-	-	-
5	SABSL	460	27.87	128.75	16.51	3.57	27.75%	0.45%	9.76%	13% Bonus Proposal

### NEPSE TECHNICAL OUTLOOKS



Date / Time	30.05.2076
Close	1123.83
Open	1140.55
High	1140.55
Low	1122.02
Bollinger Bands Top (20,2,ma,y)	1233.71
Bollinger Bands Median (20,2,ma,y)	1184.32
Bollinger Bands Bottom (20,2,ma,y)	1134.94
RSI (14)	18
MA (35, Volume, ma, 0)	326m
MACD (12,26,9)	-23
Signal macd (12,26,9)	-19
macd (12,26,9)_hist	-4

Indicators used: Bollinger Bands, MACD, RSI, Moving Average (35 days) Volume

Global Indices	SENSEX	NIFTY	S&P 500	DJIA	NIKKEI 225
	36,991.89 (-0.35%)	10,962.50 (-0.37%)	2,997.96 (-0.31%)	27,076.82 (-0.52%)	21,993.50 (+0.02%)



Disclaimers: This MARKET SUMM is prepared to timely update the market participants about the Nepalese stock market before the Market opens for the day. The information and data herein should not be construed as an investment advice or recommendation. Should the investors choose to act based on this report, it shall be entirely at their own risk and KCL Astute shall not be liable, for any loss or damages incurred thereby. Unless otherwise specifically stated, the above data concerns the previous trading day.

### KCL Astute Capital Limited

Address: Sundar Bhawan, Hattisar, Kathmandu

Contact No. 977-1-4429149 | 4429150

Email: [info@kclastute.com](mailto:info@kclastute.com)