



MARKET SUMMARY		
NEPSE	1212.05	+1.96%
Total Turnover (Rs.)	742,718,751	+143.85%
Share Volume	2,411,650	+150.02%
Total Transactions	8,978	+66.11%
Total Market Cap. (Rs. Mill)	1,497,794.84	+1.96%
Floated Market Cap (Rs. Mill)	528,139.54	+2.19%

MARKET CAP TO GDP RATIO	49.80%	▲
-------------------------	--------	---

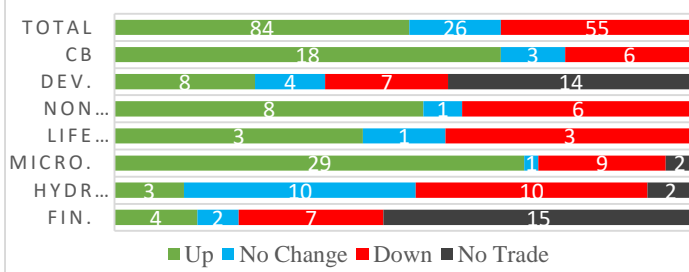
WEIGHTAGE ON MARKET CAP	
Commercial Banks	53.25%
Development Bank	5.05%
Finance	3.18%
Microfinance	6.20%
Life Insurance	7.73%
Non-life Insurance	6.30%
Hydropower	5.54%
Hotel	1.56%
Manufacturing And Processing	3.26%
Trading	0.11%
Others	7.83%
NTC	6.81%

Top Gainers	SIFC, CFCL, SLBSL
Top Losers	UPCL, EIC, SMFDB
Top Stocks by Shares Traded	CBL, NMB, PRVU
Top Stocks by Transactions	NMB, CBL, UPPER
Top Stocks by Turnover	NMB, NICA, PRVU
Top Brokers by Turnover	17, 58, 49

NEPSE STATISTICS	
Average Return	16.89%
Standard Deviation	17.21%
Standard Error	1.14%
Skewness	0.45
Kurtosis	3.42

Notes: NEPSE Index from 2069.04.01 – 2076.01.03. Avg. annual trade day's 229. Lognormal return is used. Skewness shows market is asymmetrically skewed to right, indicating average return of 16.89% more affected by outliers. Further excess kurtosis shows fat tail and more peaked distribution than normal.

TRADED SCRIPTS STATS



MARKET OVERVIEW

NEPSE reported significant gain of 23.33 points closing at 1212.05 on Tuesday. Market increased throughout the day closing at its highest level. The highest index reached throughout the day was 1212.05 while the lowest index reached was 1187.73. Turnover, share volume and total transactions all reported significant gain by 143.85%, 150.02% and 66.11% respectively. The trade of 170 scripts resulted in a total turnover of Rs.74.27 crores. Sensitive, Float and Sensitive Float reported significant gain of 5.48, 1.92 and 1.91 points respectively.

All sub-indices reported gain in their respective index. Sectors to gain the most at the end of the trading day are Life Insurance followed by Non-Life Insurance and Microfinance which reported gain of 80.19, 48.92 and 35.8 points respectively. Similarly, Banking and Development Bank closed green by gaining 29.41 and 20.02 points respectively.

SMFDB, SLBBL and EIC underperformed the most as compared to its sector performance while SIFC, CFCL and RSDC outperformed its respective sectors. SLBSL, CFCL and NADEP are the most volatile stock traded throughout the day. UPCL, NTC and MLBBL are trading closer to 52 weeks low while NIBPO, PRVU, and NICA are trading near to 52 weeks high.

SIFC is the top gainer that gained by 6.67% at the end of the trading day while UPCL is the top loser that lost by 3.23%.

SEBON has implemented the PAN system in the trading of shares in NEPSE starting from 2nd of Baisakh.

MAJOR MARKET NEWS

- Allotment of Himalaya Urja Bikas Company is concluded. Majority of the applicants are allotted 20 unit of shares.
- CBL is convening its 7th and 8th AGM on 27th Baisakh, 2076. The main agenda of the AGM is to issue 10.25% bonus shares and cash dividend for tax purposes for the FY 2073/74 and to issue 4.05% cash dividend for the FY 2074/75 to its shareholders.
- FMDDBL has published 3rd Quarter report. Net Profit is increased by 25.76% on y-o-y basis. EPS and BVPS stands at Rs. 17.90 and Rs. 127.65 respectively.
- CHLBS has published 3rd Quarter report. Net Profit is increased by 184.12% on y-o-y basis. EPS and BVPS stands at Rs. 13.33 and Rs. 118.04 respectively.



- ❏ Sparsha Laghubitta Bittiya Sanstha Ltd. has published 3rd Quarter report. Net Profit has increased to Rs. 60.39 lacs from net loss of 56.15 lacs on a y-o-y basis. EPS and BVPS stands at Rs 9.71 and Rs. 107.54 respectively.
- ❏ EIC is issuing 300% right shares to its shareholders. The book closure for the same is set to be on 9th Baisakh, 2076.

Major Events (Today)

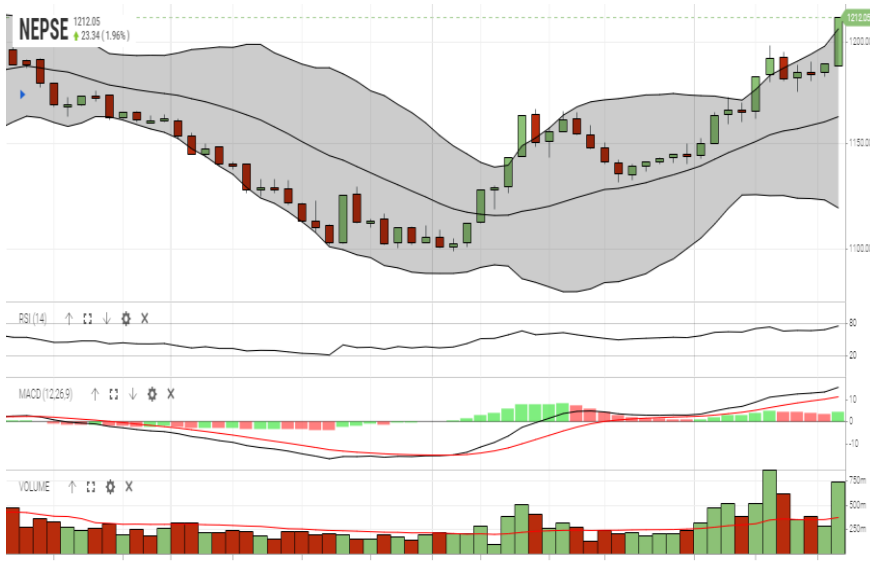
- ❏ Union Hydropower Company Limited is issuing 3,534,340 units IPO shares to general public.
- ❏ Issue open for 60% and 50% right shares of ALICL, and GLICL.

	Scrip Name	Ticker	LTP
UNDER PRICED	Nepal Bank Ltd.	NBL	299.00
	Agriculture Development Bank Ltd.	ADBL	326.00
	Bank of Kathmandu Ltd.	BOKL	267.00
	Nepal Credit and Commerce Ltd.	NCCB	229.00
	Century Commercial Bank Ltd.	CCBL	169.00
FAIRLY PRICED	Nepal Bangladesh Bank Ltd.	NBB	216.00
	Global IME Bank Limited	GBIME	282.00
	Citizen Bank International Limited	CZBIL	227.00
	Civil Bank Limited	CBL	168.00
	Sunrise Bank Limited	SRBL	243.00
OVER PRICED	NIC Asia Bank Limited	NICA	492.00
	Everest Bank Limited	EBL	614.00
	Standard Chartered Bank Limited	SCB	595.00
	Himalayan Bank Limited	HBL	510.00
	Nepal SBI Bank Limited	SBI	425.00

Notes: # Above pricing is performed by averaging the prices derived as per P/E, P/B and 180 days closing averages. Based on Published Q2 75/76 data.
Harmonic Mean of industries is carried for Pricings.

GLOBAL INDICES		
SENSEX	39,275.64	+369.80
NIFTY	11,787.15	+96.80
S&P 500	2,905.58	-1.83
DJIA	26,384.77	-27.53
NIKKEI 225	22,221.66	+52.55

NEPSE TECHNICAL OUTLOOKS



Indicators used: Bollinger Bands, MACD, RSI, Moving Average (20 days) Volume

Date / Time	03.01.2076
Close	1,212.05
Open	1,187.70
High	1,212.05
Low	1,187.70
Turnover	742,718,751
Bollinger Bands Top Bollinger Bands (20,2,ma,y)	1,206.45
Bollinger Bands Median Bollinger Bands (20,2,ma,y)	1,162.78
Bollinger Bands Bottom Bollinger Bands (20,2,ma,y)	1,119.12
RSI (14)	75
MA (20, Volume, ma, 0)	372m
MACD (12,26,9)	15
Signal macd (12,26,9)	11
macd (12,26,9)_hist	4



Disclaimers: This MARKET SUMM is prepared to timely update the market participants about the Nepalese stock market before the Market opens for the day. The information and data herein should not be construed as an investment advice or recommendation. Should the investors choose to act based on this report, it shall be entirely at their own risk and KCL Astute shall not be liable, for any loss or damages incurred thereby. Unless otherwise specifically stated, the above data concerns the previous trading day.

KCL Astute Capital Limited

Address: Sundar Bhawan, Hattisar, Kathmandu

Contact No. 977-1-4429149 | 4429150, Email: info@kclastute.com