



MARKET SUMMARY		
NEPSE	1,260.90	+0.21%
Total Turnover (Rs.)	403,538,147	-14.60%
Share Volume	1,373,120	-6.83%
Total Transactions	6,156	-10.82%
Total Market Cap. (Rs. Mill)	1,568,556.48	+0.21%
Floated Market Cap (Rs. Mill)	549,131.81	+0.19%

MARKET CAP TO GDP RATIO	52.15% ▲
-------------------------	----------

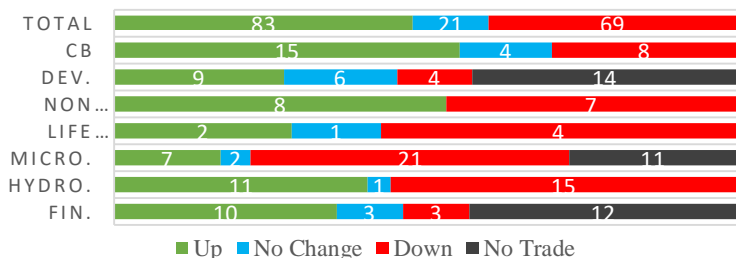
WEIGHTAGE ON MARKET CAP	
Commercial Banks	52.87%
Development Bank	5.11%
Finance	3.05%
Microfinance	5.72%
Life Insurance	7.59%
Non-life Insurance	5.86%
Hydropower	5.91%
Hotel	1.76%
Manufacturing And Processing	4.27%
Trading	0.10%
Others	7.77%
NTC	6.64%

Top Gainers	AHPC, GUFL, GLBSL
Top Losers	GILB, UNHPL, GFCL
Top Stocks by Shares Traded	NBL, PRVU, SBL
Top Stocks by Transactions	SHIVM, UPPER, NBL
Top Stocks by Turnover	NBL, SHIVM, PRVU
Top Brokers by Turnover	34, 45, 42

NEPSE STATISTICS	
Average Return	16.99%
Standard Deviation	17.11%
Standard Error	1.13%
Skewness	0.46
Kurtosis	3.44

Notes: NEPSE Index from 2069.04.01 – 2076.03.02. Avg. annual trade day's 229. Lognormal return is used. Skewness shows market is asymmetrically skewed to right, indicating average return of 16.99% more affected by outliers. Further excess kurtosis shows fat tail and more peaked distribution than normal.

TRADED SCRIPTS STATS



MARKET OVERVIEW

NEPSE reported a meagre gain of 2.63 points closing at 1260.90 on Monday. Market experienced gain in its index after consecutive fall for 3 days. However, Turnover, Share Volume and Transactions all decreased by 14.60%, 6.83% and 10.82% respectively. The trade of 173 scripts led to a turnover of Rs. 40.35 crores. Throughout the day, market traded at the range of 1254.52 to 1264.97 level. Sensitive, Float and Sensitive Float posted a marginal gain of 0.29, 0.17 and 0.09 points respectively.

Three Sub-Indices Life Insurance, Microfinance, and Development Banks closed Red, losing 18.84, 3.19 and 2.76 points respectively. Remaining Sub-indices closed Green. Sectors that reported major gains include Non-life Insurance, Manu & Pro. and Hotels which gained by 37.27, 28.32 and 12.88 points respectively. Further, Banking gained by 1.7 points at the end of the day.

GLBSL, AHPC, and KRBL outperformed their respective sectors while PMHPL, GFCL, and HURJA underperformed the most in comparison to their respective sectors. RRHP, GBLBS and SINDU were the most volatile stocks. KSBBL, NBB and GUFL traded closest to their 52 week high whereas LLBS, SIL, and MSMB traded closest to their 52 week low.

Nepal Capital Market Association has presented 13 points suggestion to the Governor of NRB for inclusion in the monetary policy of FY 2076/77. Some of the major suggestion are:

- Decrease in the interest on share collateralized loans.
- Limit of Share Collateralized should be extended to 80% from the existing 65%
- Pathways for the successful implementation of bringing NRN investors to Nepalese capital market.
- Discount facilities for women looking to participate in stock market.
- Relaxation of the CCD ratio to 85% for some time.
- Mergers of Microfinance Companies should be prioritized.

MAJOR MARKET NEWS

- 12% Bonus Shares of NABIL is listed on NEPSE for trading.
- Nepal Reinsurance Company convened its 4th AGM on 31st Jestha, 2076. The main agenda of the AGM includes issuance of IPO worth Rs. 1.6 arba.
- Shine Resunga Development Bank is in the verge of acquiring Bhargav Bikas Bank. The approval for the same has been received from NRB. After the acquisition, SHINE will be listed as a National Level Development Bank.



Major Events (Today)

- NFO Alert:** NIBL Sahabagita Fund, an Open End MF worth Rs.12.5 crores (12.5 million at Rs.10 each) has been extended upto 16th Ashadh, after the issue remained undersubscribed by more than 50% till 22nd Jestha;
- NFO Alert:** Issue of Citizens Mutual Fund-2 (CMF II), 7-years closed end fund worth Rs.1 billion (100 million units at Rs.10) extended till 8th Ashadh, 2076 after under-subscription.
- Himal Dolkha Hydropower Company Ltd. issuing 16 lakhs units IPO to the locals of project affected area of Illam district.

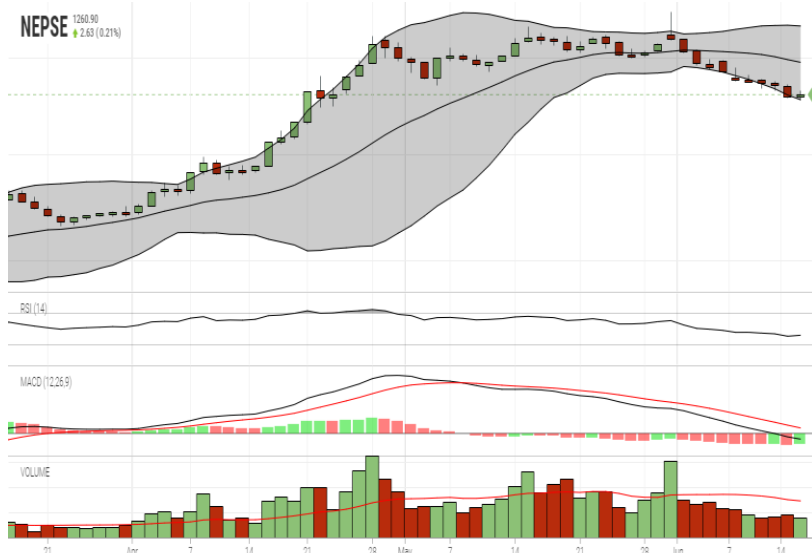
GLOBAL INDICES		
SENSEX	38,960.79	-491.28
NIFTY	11,672.15	-151.15
S&P 500	2,886.98	-4.66
DJIA	26,089.61	-17.16
NIKKEI 225	21,124.00	+7.11

	Stock Name	Ticker	LTP
UNDER PRICED	Nepal Bank Ltd.	NBL	324.00
	Kumari Bank Ltd.	KBL	213.00
	Prime Commercial Bank Ltd.	PCBL	290.00
	Civil Bank Ltd.	CBL	146.00
	Prabhu Bank Limited	PRVU	266.00
FAIRLY PRICED	Laxmi Bank Limited	LBL	218.00
	Global IME Bank Ltd.	GBIME	296.00
	Sunrise Bank Limited	SRBL	252.00
	Mega Bank Nepal Limited	MEGA	202.00
	Janata Bank Nepal Ltd.	JBNL	208.00
OVER PRICED	Standard Chartered Bank Limited	SCB	665.00
	Everest Bank Limited	EBL	657.00
	Himalayan Bank Limited	HBL	558.00
	Nepal SBI Bank Limited	SBI	463.00
	Nabil Bank Limited	NABIL	816.00

Notes: # Above pricing is performed by averaging the prices derived as per P/E, P/B and 180 days closing averages. Based on Published Q3 75/76 data.

Harmonic Mean of industries is carried for Pricings.

NEPSE TECHNICAL OUTLOOKS



Date / Time	02.03.2076
Close	1260.90
Open	1259.38
High	1264.97
Low	1254.52
Turnover	403,538,147
Bollinger Bands Top Bollinger Bands (20,2,ma,y)	1334.44
Bollinger Bands Median Bollinger Bands (20,2,ma,y)	1295.03
Bollinger Bands Bottom Bollinger Bands (20,2,ma,y)	1255.63
RSI (14)	37
MA (20, Volume, ma, 0)	722m
MACD (12,26,9)	-4
Signal macd (12,26,9)	4
macd (12,26,9)_hist	-8

Indicators used: Bollinger Bands, MACD, RSI, Moving Average (20 days) Volume

Disclaimers: This MARKET SUMM is prepared to timely update the market participants about the Nepalese stock market before the Market opens for the day. The information and data herein should not be construed as an investment advice or recommendation. Should the investors choose to act based on this report, it shall be entirely at their own risk and KCL Astute shall not be liable, for any loss or damages incurred thereby. Unless otherwise specifically stated, the above data concerns the previous trading day.



KCL Astute Capital Limited
 Address: Sundar Bhawan, Hattisar, Kathmandu
 Contact No. 977-1-4429149 | 4429150,
 Email: info@kclastute.com