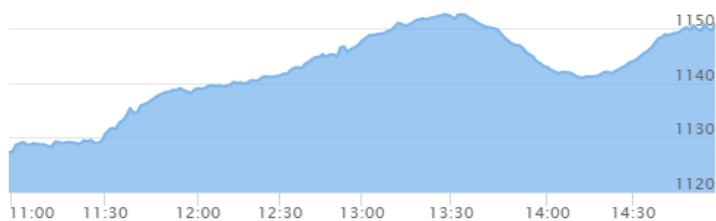




1st Ashwin, 2076 Wednesday

Market Summ... concerning previous day's trading Tuesday"

NEPSE Index – Tuesday



MARKET SUMMARY

NEPSE	1,150.74	+2.39%
Total Turnover (Rs.)	383,957,426	+11.64%
Share Volume	1,377,946	+10.38%
Total Transactions	7,129	-5.54%
Total Market Cap. (Rs. Mill)	1,461,536.60	+2.40%
Floated Market Cap (Rs. Mill)	528,303.85	+2.28%

MARKET CAP TO GDP RATIO **48.59%** ▲

WEIGHTAGE ON MARKET CAP

Commercial Banks	53.23%
Development Bank	5.40%
Finance	2.90%
Microfinance	6.55%
Life Insurance	6.76%
Non-life Insurance	5.22%
Hydropower	6.51%
Hotel	1.71%
Manufacturing And Processing	4.14%
Trading	0.11%
Others	7.46%
NTC	6.44%

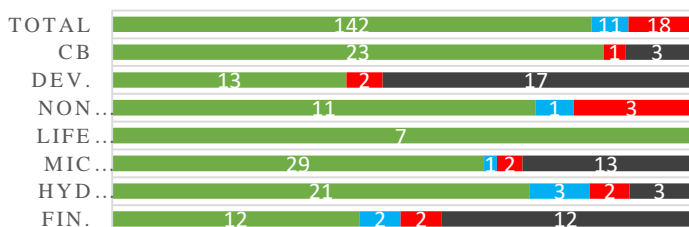
Top Gainers	SHIVM, GLBSL, RADHI
Top Losers	EIC, AKJCL, CZBIL
Top Stocks by Shares Traded	SBL, NBL, RHPL
Top Stocks by Transactions	RHPL, SJCL, SBL
Top Stocks by Turnover	CBL, NBL, NLIC
Top Brokers by Transactions	44, 34, 49

NEPSE STATISTICS

Average Return	15.06%
Standard Deviation	16.91%
Skewness	0.48
Kurtosis	3.51

Notes: NEPSE Index from 2069.04.01 – 2076.05.31. Avg. annual trade day's 229. Lognormal return is used. Skewness shows market is asymmetrically skewed to right, indicating average return of 15.06% more affected by outliers. Further excess kurtosis shows fat tail and more peaked distribution than normal.

TRADED SCRIPTS STATS



■ Up ■ No Change ■ Down ■ No Trade

MAJOR MARKET NEWS

- Market closed with a bullish candle at the end of the day after consecutive fall for 8 days. NEPSE gained 26.91 points and closed at 1150.74 level.
- Sensitive, Float and Sensitive Float Index gained by 5.22, 1.89 and 1.52 points respectively.
- Except Mutual Fund, remaining Sub-indices closed green; Manu & Pro. followed by Life Insurance gained by 107.1 and 102.93 respectively.
- SHIVM, GLBSL, RADHI and API hit positive circuit at the end of the day gaining 9.90%, 9.62%, 9.45% and 9.17% respectively.
- Tinau Mission Development Bank lists 11,441,681.25 unit shares in NEPSE. Tinau Mission is on the verge of acquiring Nepal Community Development Bank.
- Infinity Laghubitta proposes 10% bonus shares and 5.79% cash dividend to shareholders.
- NAGRO proposes 15% bonus shares and cash dividend for tax purposes to shareholders.
- SBL proposes 10% bonus shares and 15.26% cash dividend to shareholders.
- NADEP has published Q4 financial report for FY 2075/76. The net profit of the company decreased by 43.01% on a y-o-y basis to Rs. 2.69 crores. The EPS and BVPS stands at Rs. 7.32 and 150.10 respectively.
- NIBSF1 is proposing 6.50% cash dividend to unit holders. The book closure date is set at 7th Ashwin.
- SIL urges its shareholders to pay the dividend tax on 15.48% bonus shares distribution.
- MPFL allotted 865% right shares to its shareholders.
- Adjusted price of CZBIII for 3% bonus shares is set at Rs. 210.68
- Adjusted price of PLIC for 12.50% bonus shares is set at Rs. 320.89

Today's Events (Wednesday)

- Book Closure Date for 200% right shares of SMATA.
- Right Shares Alert:** MNBBL is issuing 20% Right
- Right Shares Alert:** SLICL is issuing 70% Right
- Right Shares Alert:** UIC is issuing 240% Right

New Fund Offerings (Upcoming)

	Schemes	Units	@ Rs.	Open
1	Sunrise First Mutual Fund	100,000,000	10	Coming Soon

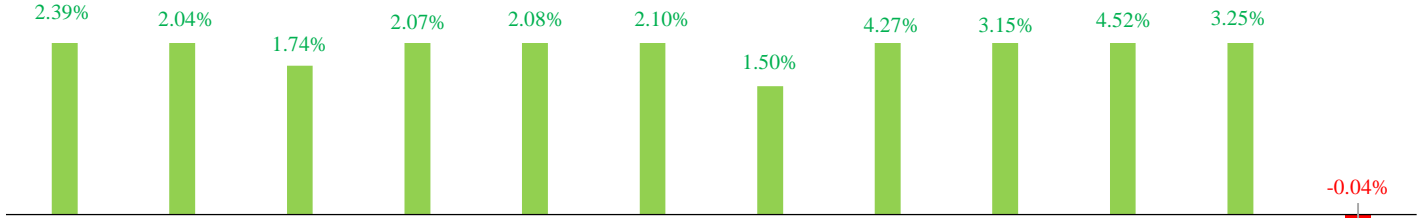


MARKET SUMM...



1st Ashwin, 2076 Wednesday

INDICES % CHANGE



NEPSE

CB

DB

NLI

LI

MFI

FI..

HP

HO..

MP

OT..

MF

Volatile Stocks

NLICL	(473)	16.2%
SJCL	(178)	13.41%
UPCL	(76)	12.0%

Stock Movement

HPPL	(136)	Lowest till now
PMHPL	(94)	Lowest till now
PPCL	(93)	Lowest till now

Highest Volume – Day 3 (Week 10)

NBL	(317)	210,909 units
RHPL	(167)	168,869 units
SBL	(325)	168,654 units

Sectorial Outlooks

Bullish

Banking
Non-life Insurance

Bearish

Mutual Fund
Others

Stock Pick...

Up Pick

GLBSL
RADHI

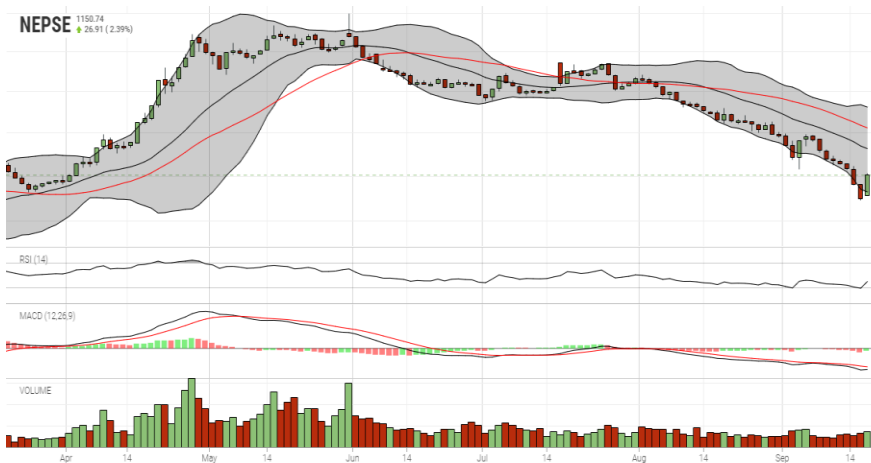
Down Pick

EIC
SINDU

Financial Metrics

S.N.	Ticker	LTP	EPS	BVPS	P/E	P/B	ROE	NPL	CAR	Remarks
1	SHIVM	544	34.16	194.6	15.93	2.80	20.29%	-	-	-
2	LLBS	679	45.84	201.11	14.81	3.38	25.61%	1.26%	13.31%	-
2	JSLBB	946	73.73	327.01	12.83	2.89	26.99%	2.23%	8.37%	-
3	NIL	368	29.22	195.90	12.59	1.88	16.12%	-	-	-
5	SABSL	470	27.87	128.75	16.86	3.65	27.75%	0.45%	9.76%	13% Bonus Proposal

NEPSE TECHNICAL OUTLOOKS



Date / Time	31.05.2076
Close	1150.74
Open	1127.26
High	1152.51
Low	1127.26
Bollinger Bands Top (20,2,ma,y)	1230.71
Bollinger Bands Median (20,2,ma,y)	1181.18
Bollinger Bands Bottom (20,2,ma,y)	1131.65
RSI (14)	35
MA (35, Price, ma, 0)	1205.70
MACD (12,26,9)	-23
Signal macd (12,26,9)	-20
macd (12,26,9)_hist	-3

Indicators used: Bollinger Bands, MACD, RSI, Moving Average (35 days) Volume

Global Indices

SENSEX	36,481.09 (-1.73%)	NIFTY	10,817.60 (-1.69%)	S&P 500	2,997.96 (-0.31%)	DJIA	27,076.82 (-0.52%)	NIKKEI 225	22,001.32 (+0.06%)
--------	--------------------	-------	--------------------	---------	-------------------	------	--------------------	------------	--------------------



Disclaimers: This MARKET SUMM is prepared to timely update the market participants about the Nepalese stock market before the Market opens for the day. The information and data herein should not be construed as an investment advice or recommendation. Should the investors choose to act based on this report, it shall be entirely at their own risk and KCL Astute shall not be liable, for any loss or damages incurred thereby. Unless otherwise specifically stated, the above data concerns the previous trading day.

KCL Astute Capital Limited

Address: Sundar Bhawan, Hattisar, Kathmandu

Contact No. 977-1-4429149 | 4429150

Email: info@kclastute.com