



MARKET OVERVIEW

MARKET SUMMARY		
NEPSE	1,109.72	-0.28%
Total Turnover (Rs.)	210,726,447	-90.27%
Share Volume	828,823	-89.76%
Total Transactions	5,150	-12.27%
Total Market Cap. (Rs. Mill)	1,357,745.92	-0.05%
Floated Market Cap (Rs.Mill)	475,253.78	0.08%

MARKET CAP TO GDP RATIO	45.14% ▼
-------------------------	----------

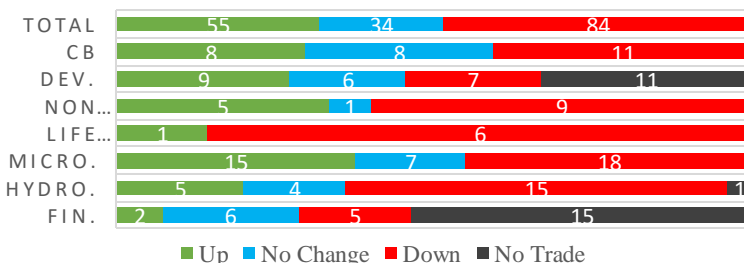
WEIGHTAGE ON MARKET CAP as on 14.02.2019	
Commercial Banks	51.52%
Development Bank	5.23%
Finance	3.48%
Microfinance	6.44%
Life Insurance	7.96%
Non-life Insurance	6.64%
Hydropower	5.77%
Hotel	1.65%
Manufacturing And Processing	2.52%
Trading	0.11%
Others	8.70%
NTC	7.62%

Top Gainers	CHLBS, EDBL, PMHPL
Top Losers	KADBL, RHPC, AKPL
Top Stocks by Shares Traded	PRVU, PRVUPO, UPPER
Top Stocks by Transactions	UPPER, PRVU, BOKL
Top Stocks by Turnover	PRVU, CIT, UPPER
Top Brokers by Turnover	17, 44, 56

NEPSE STATISTICS	
Average Return	15.98%
Standard Deviation	17.31%
Standard Error	1.14%
Skewness	0.46
Kurtosis	3.42

Notes: NEPSE Index from 2069.04.01 –2075.11.05. Avg. annual trade day's 229. Lognormal return is used. Skewness shows market is asymmetrically skewed to right, indicating average return of 15.98% more affected by outliers. Further excess kurtosis shows fat tail and more peaked distribution than normal.

TRADED SCRIPTS STATS



NEPSE plunged 3.15 points on the opening day of weekend Sunday, closing at 1109.72 level. Turnover remained Rs.21.07 crores through the trade of 828,823 unit shares from 5,150 Transactions of 173 Companies scripts. Sensitive, Float and Sensitive Float index all posted meagre fall of 0.76, 0.12 and 0.08 points respectively.

Three sub-indices Manu. & Pro., Hotels and Development Bank posted the gain of 6.25, 5.5 and 3.68 points respectively. Rest all sub-indices closed Red on the day. Major losing ones were Life Insurance, Non-life insurance and Hydropower that lost 53.75, 9.05 and 8.34 points respectively. Banking lost 0.92 points and Microfinance lost 1.66 points.

SMB, RHPC, KNBL underperformed the most as compared to its sector performance while PMHPL, EDBL, and BOKL outperformed its respective sectors. HBL, SMB and BOKL were the most volatile stocks. CHLBS traded at all-time high of Rs.412 while scripts like DHPL, LEMF and KKHC etc. traded at all-time low. NABIL, BPCL, and SANIMA are trading closer to 52 weeks low while CHLBS is trading near to 52 weeks high.

Following the delegation of FNCCI, PM Oli has requested the banks not to impose interest rates arbitrarily. PM also urged the investors to increase investment on productive sectors that prop up nation's economy.

SEBON had made the second amendment to the "Securities Registration and Issue Regulation, 2073" to particularly lure the investment in hydropower.

MAJOR MARKET NEWS

- ☑ The IPO shares of Ghalemdi Hydropower has been listed in NEPSE for trading.
- ☑ IPO of two Microfinance companies underway. Nepal Agro Laghibitta Bittiya Sanstha Ltd- 161,778 units and Infinity Laghubitta Bittiya Sanstha Limited- 674,000 units.
- ☑ KKHC reported net loss of Rs. 7.12 crores; EPS Rs. (30.81), NWPS Rs. 23.36.
- ☑ Panchthar Power Company Limited has allotted its 962,500 units IPO shares to the local residents.
- ☑ Nabil Bank is convening its 34th AGM on Falgun 27, 2075. The AGM agendas includes: conversion of 10% promoter shares held by NIDC Development Bank Limited to be converted to public shares.



5 The cut-off price of the EICPO stands at 253.39.
Maximum bid received for Rs. 551. Siddhartha Capital Limited was the issue manager.

Major Events (Today)

- 5 IPO of Shivam Cements Limited to General Public as well as Locals of Project affected areas at an issue price of Rs.300 and Rs.200 respectively.
- 5 Universal Power Company Limited IPO to General Public; likely to close today.

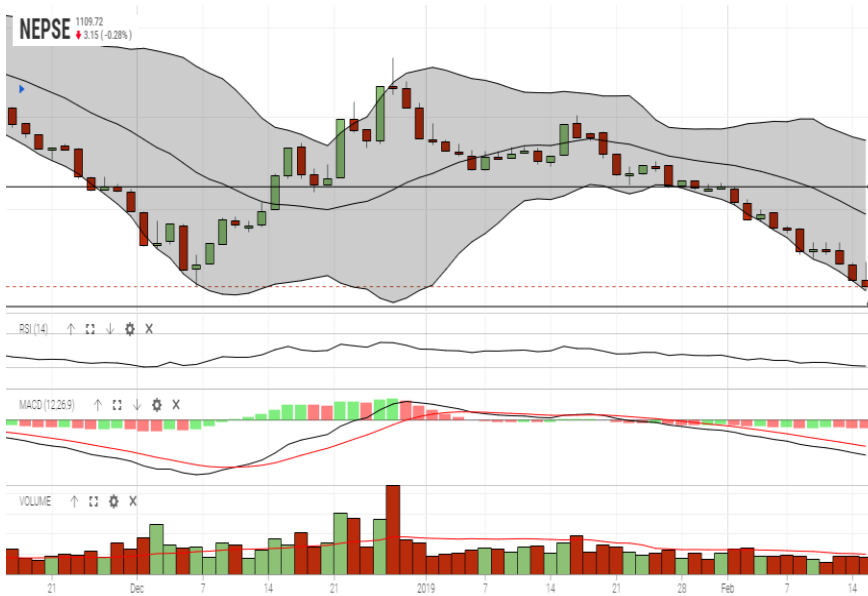
	Scrip Name	Ticker	LTP
UNDER PRICED	Nepal Bank Ltd.	NBL	284.00
	Laxmi Bank Limited	LBL	186.00
	Bank of Kathmandu Ltd.	BOKL	240.00
	Nepal Bangladesh Bank Limited	NBB	181.00
	Agriculture Development Bank Ltd.	ADBL	330.00
FAIRLY PRICED	Machhapuchhre Bank Limited	MBL	209.00
	Prime Commercial Bank Ltd.	PCBL	309.00
	Himalayan Bank Limited	HBL	430.00
	Kumari Bank Limited	KBL	230.00
	Sanima Bank Limited	SANIMA	295.00
OVER PRICED	Standard Chartered Bank Limited	SCB	536.00
	Nabil Bank Limited	NABIL	807.00
	NIC Asia Bank Ltd.	NICA	387.00
	Nepal Investment Bank Limited	NIB	508.00
	Everest Bank Limited	EBL	504.00

Notes: # Above pricing is performed by averaging the prices derived as per P/E, P/B and 180 days closing averages. Based on Published Q2 75/76 data.

Harmonic Mean of industries is carried for Pricings.

GLOBAL INDICES		
SENSEX	35,808.95	-67.27
NIFTY	10,724.40	-21.65
S&P 500	2,775.60	+29.87
DJIA	25,883.25	+443.86
NIKKEI 225	20,900.63	-239.08

NEPSE TECHNICAL OUTLOOKS



Date / Time	05.11.2075
Close	1,109.72
Open	1,112.91
High	1,122.33
Low	1,107.63
Turnover	210,726,447
Bollinger Bands Top Bollinger Bands (20,2,ma,y)	1,186.84
Bollinger Bands Median Bollinger Bands (20,2,ma,y)	1,147.24
Bollinger Bands Bottom Bollinger Bands (20,2,ma,y)	1,107.64
RSI (14)	22
MA (20, Volume, ma, 0)	246m
MACD (12,26,9)	-16
Signal macd (12,26,9)	-12
macd (12,26,9)_hist	-4

Indicators used: Bollinger Bands, MACD, RSI, Moving Average (20 days) Volume



Disclaimers: This MARKET SUMM is prepared to timely update the market participants about the Nepalese stock market before the Market opens for the day. The information and data herein should not be construed as an investment advice or recommendation. Should the investors choose to act based on this report, it shall be entirely at their own risk and KCL Astute shall not be liable, for any loss or damages incurred thereby. Unless otherwise specifically stated, the above data concerns the previous trading day.

KCL Astute Capital Limited

Address: SundarBhawan, Hattisar, Kathmandu

Contact No. 977-1-4429149 | 4429150, Email: info@kclastute.com