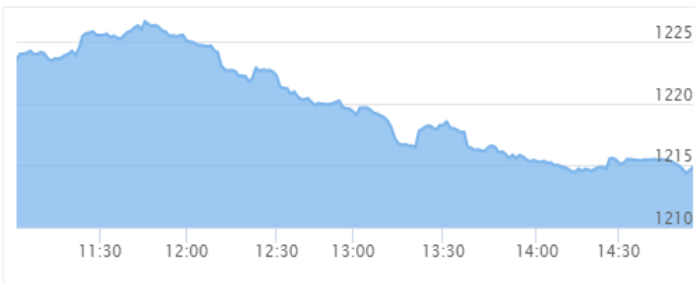




## NEPSE Index – Sunday



## MARKET SUMMARY

NEPSE	1214.83	-0.75%
Total Turnover (Rs.)	329527915	-22.34%
Share Volume	1101776	-31.59%
Total Transactions	7701	32.52%
Total Market Cap. (Rs. Mill)	1542046.72	-0.62%
Floated Market Cap (Rs.Mill)	554306.61	-0.43%

MARKET CAP TO GDP RATIO 51.27% ▼

## WEIGHTAGE ON MARKET CAP

Commercial Banks	52.53%
Development Bank	5.20%
Finance	2.90%
Microfinance	6.33%
Life Insurance	7.25%
Non-life Insurance	5.51%
Hydropower	6.82%
Hotel	1.75%
Manufacturing And Processing	4.09%
Trading	0.10%
Others	7.53%
NTC	6.48%

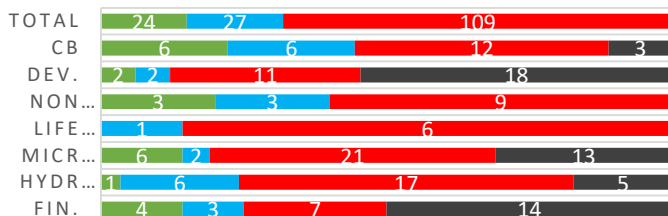
Top Gainers	GILB, RLFL, GFCL
Top Losers	GLBSL, WMBF, GLICL
Top Stocks by Shares Traded	RHPL, NICA, SJCL
Top Stocks by Transactions	RHPL, SJCL, NIB
Top Stocks by Turnover	NICA, RHPL, NIB
Top Brokers by Transactions	45, 34, 49

## NEPSE STATISTICS

Average Return	16.02%
Standard Deviation	16.94%
Skewness	0.47
Kurtosis	3.53

Notes: NEPSE Index from 2069.04.01 – 2076.05.01. Avg. annual trade day's 229. Lognormal return is used. Skewness shows market is asymmetrically skewed to right, indicating average return of 16.02% more affected by outliers. Further excess kurtosis shows fat tail and more peaked distribution than normal.

## TRADED SCRIPTS STATS



■ Up ■ No Change ■ Down ■ No Trade

## MAJOR MARKET NEWS

- 📌 Market closed with Red candle on the opening day of the week, Sunday, losing 9.20 points and NEPSE closing at 1214.83 level.
- 📌 Sensitive, Float and Sensitive Float Index all dropped by 1.57, 0.54 and 0.24 points respectively.
- 📌 Price adjusted for 20% Right Share of MNBBL.
- 📌 Price adjusted for 11% cash dividend of SEF.
- 📌 The 66<sup>th</sup> BOD meet of ALBSL has proposed 12% bonus shares to its shareholders.
- 📌 The 47<sup>th</sup> BOD meet of NAGRO has proposed 15% cash dividend to its shareholders.
- 📌 The 99<sup>th</sup> BOD meet of ALBSL has proposed 35% bonus shares to its shareholders.
- 📌 GILB hit positive circuit by gaining 9.85%.
- 📌 CFCL Q4 75/76 y-so-y Net profit increased by 12.14% to Rs.8.36 crores; EPS Rs.10.16 BVPS Rs.123.60
- 📌 NIL Q4 75/76 y-o-y Net profit increased by 13.63% to Rs.34.37 crores; EPS Rs.29.22 BVPS Rs.195.90
- 📌 UNL Q4 75/76 y-o-y Net profit increased by 6.75% to Rs.1.06 arba; EPS Rs.1158 BVPS Rs.2526
- 📌 SHL Q4 75/76 y-o-y Net profit increased by 28.8% to Rs.27.42 crores; EPS Rs.3.74 BVPS Rs.21.89.
- 📌 BFC Q4 75/76 y-o-y Net profit increased by 84.63% to Rs.8.2 crores; EPS Rs.9.92 BVPS Rs.87.53
- 📌 UFL Q4 75/76 y-o-y Net profit increased by 87.94% to Rs 13.33 crores; EPS Rs.15.84
- 📌 JFL Q4 75/76 y-o-y Net profit decreased by 9.01% to Rs 11.61 crores; EPS Rs.30.34 BVPS Rs.158.26
- 📌 EDBL Q4 75/76 y-o-y Net profit increased by 4.89% to Rs.16.43 crores; EPS Rs.23.71 BVPS Rs.144.79
- 📌 SIL Q4 75/76 y-o-y Net profit decreased by 27.41% to Rs.21.44 crores; EPS Rs.21.43 BVPS Rs.189.89
- 📌 ODBL Q4 75/76 y-o-y Net profit increased by 51.87% to Rs.21.44 crores; EPS Rs.29.65 BVPS Rs.156.63.
- 📌 KADBL Q4 75/76 y-o-y Net profit increased by 21.71% to Rs.10.11 crores; EPS Rs.18.52 BVPS Rs.129.89
- 📌 GLICL Q4 75/76 y-o-y Net profit increased by 90.36% to Rs.7.64 crores; EPS Rs.8.22 BVPS Rs.133.92

## Today Events (Thursday)

- 📌 **NFO Alert:** SIGS2 worth Rs.1.40 billion (140 million units at Rs.10 each). *Last day.*
- 📌 **NFO Alert:** NMB 50 worth Rs.1.20 billion (120 million units at Rs.10 each). *Issue date extended.*
- 📌 **NFO Alert:** NIC ASIA Balance Fund worth Rs.1.25 billion (125 million units at Rs.10 each). *Extended*

Fundamental Watch: Quarter 4 2075/76 Unaudited Reports

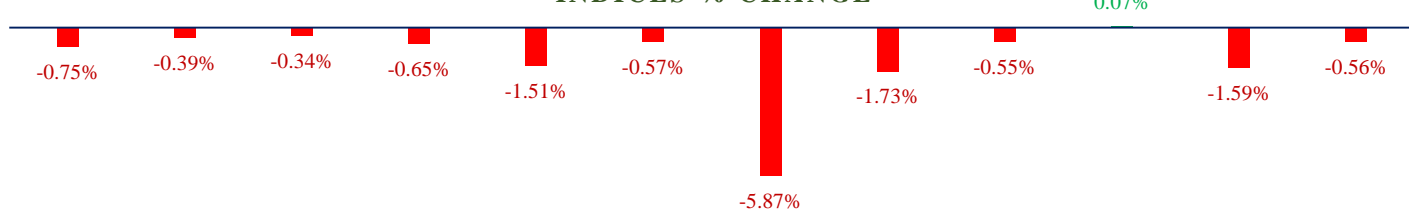


# MARKET SUMM...



2<sup>nd</sup> Bhadra, 2076 Monday

## INDICES % CHANGE



NEPSE      CB      DB      NLI      LI      MFI      FI..      HP      HO..      MP      OT..      MF

### Volatile Stock

NAGRO	(810)	7.05%
GILB	(747)	6.38%
RBCLPO	(8450)	6.14%

### Stock Movement

UPCL	(82)	Lowest till now
DHPL	(62)	Lowest till now
NHDL	(115)	Lowest till now

### Highest Volume – Day 1 (Week 6)

RHPL	(205)	82,602 units
NICA	(451)	54,223 units
SJCL	(217)	42,847 units

### Sectorial Outlooks

<b>Bullish</b>	-
<b>Bearish</b>	Banking Non-Life Insurance

### Stock Pick...

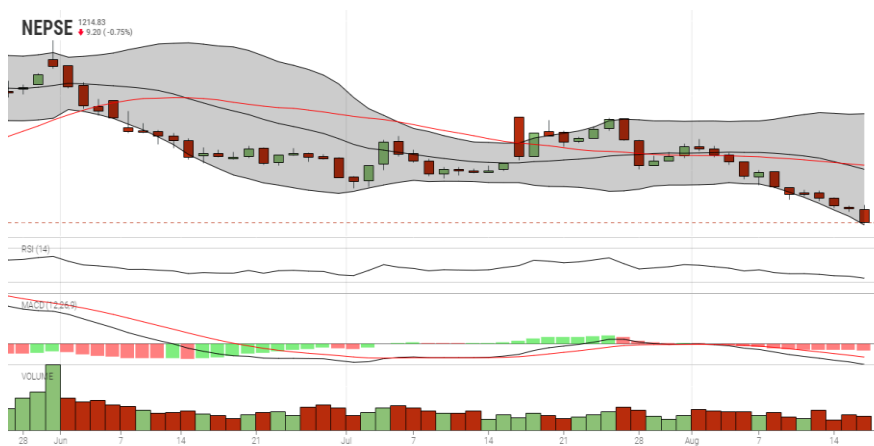
<b>Up Pick</b>	MEGA HDL
<b>Down Pick</b>	CIT NIB

### Financial Metrics

S.N.	Ticker	LTP	EPS	BVPS	P/E	P/B	ROE	NPL	CAR	Remarks
1	CBL	148	9.5	127.98	15.58	1.16	7.57%	2.37%	17.97%	-
1	MNBBL	326	27.84	146.39	11.71	2.23	20.97%	0.07%	13.30%	-
2	NABIL	779	47.65	258.06	16.35	3.02	19.59%	0.74%	12.71%	-
3	SCB	640	31.15	187.08	20.55	3.42	17.26%	0.15%	19.90%	-
5	PRIN	349	26	186	13.42	1.88	-	-	-	-

Note: If asterisk sign (\*) financial metrics denotes Quarter 3 75/76 data, otherwise financial metrics are of Quarter 4 75/76 data.

### NEPSE TECHNICAL OUTLOOKS



Date / Time	01.05.2076
Close	1214.83
Open	1223.51
High	1226.57
Low	1214.33
Bollinger Bands Top (20,2,ma,y)	1287.83
Bollinger Bands Median (20,2,ma,y)	1250.54
Bollinger Bands Bottom (20,2,ma,y)	1213.25
RSI (14)	27
MA (35, ma, 0)	1253.30
MACD (12,26,9)	-11
Signal macd (12,26,9)	-7
macd (12,26,9)_hist	-4

Indicators used: Bollinger Bands, MACD, RSI, Moving Average (35 days) Volume

<b>Global Indices</b>	<b>SENSEX</b> 37,350.33 (+0.10%)	<b>NIFTY</b> 11,047.80 (+0.17%)	<b>S&amp;P 500</b> 2,888.68 (+1.44%)	<b>DJIA</b> 25,886.01 (+1.20%)	<b>NIKKEI 225</b> 20,534.50 (+0.81%)
-----------------------	-------------------------------------	------------------------------------	---	-----------------------------------	---



Disclaimers: This MARKET SUMM is prepared to timely update the market participants about the Nepalese stock market before the Market opens for the day. The information and data herein should not be construed as an investment advice or recommendation. Should the investors choose to act based on this report, it shall be entirely at their own risk and KCL Astute shall not be liable, for any loss or damages incurred thereby. Unless otherwise specifically stated, the above data concerns the previous trading day.

### KCL Astute Capital Limited

Address: Sundar Bhawan, Hattisar, Kathmandu

Contact No. 977-1-4429149 | 4429150

Email: [info@kclastute.com](mailto:info@kclastute.com)

KCL ASTUTE CAPITAL RESEARCH TEAM