



MARKET SUMMARY		
NEPSE	1,143.59	-0.08%
Total Turnover (Rs.)	266,606,810	+5.97%
Share Volume	950,643	-3.90%
Total Transactions	5,777	+1.14%
Total Market Cap. (Rs. Mill)	1,397,633.95	-0.08%
Floated Market Cap (Rs. Mill)	490,235.68	-0.05%

MARKET CAP TO GDP RATIO	46.51%	▼
-------------------------	--------	---

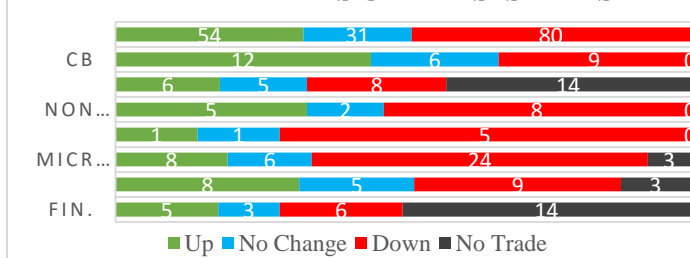
WEIGHTAGE ON MARKET CAP	
Commercial Banks	51.34%
Development Bank	5.16%
Finance	3.39%
Microfinance	6.12%
Life Insurance	7.93%
Non-life Insurance	6.48%
Hydropower	5.94%
Hotel	1.61%
Manufacturing And Processing	3.58%
Trading	0.11%
Others	8.34%
NTC	7.29%

Top Gainers	AKPL, MPFL, CEFL
Top Losers	UPCL, RADHI, MMFDB
Top Stocks by Shares Traded	BOKL, PRVU, UPPER
Top Stocks by Transactions	UPPER, SHIVM, ALBSL
Top Stocks by Turnover	BOKL PRVU, SHIVM
Top Brokers by Turnover	49, 44, 58

NEPSE STATISTICS	
Average Return	16.15%
Standard Deviation	17.24%
Standard Error	1.14%
Skewness	0.46
Kurtosis	3.43

Notes: NEPSE Index from 2069.04.01 – 2075.12.17. Avg. annual trade day's 229. Lognormal return is used. Skewness shows market is asymmetrically skewed to right, indicating average return of 16.15% more affected by outliers. Further excess kurtosis shows fat tail and more peaked distribution than normal.

TRADED SCRIPTS STATS



MARKET OVERVIEW

NEPSE opened the week's trade with a bearish candle on Sunday. Market reported a loss of 0.91 points in its index closing at 1143.59. The highest index reached throughout the day was 1149.81 while the lowest index reached was 1139.51. Turnover, and total transaction increased by 5.97% and 1.14% respectively. The trade of 165 scripts resulted in a total turnover of Rs. 26.66 crores. Sensitive, Float and Sensitive Float also reported a marginal loss of 0.12, 0.04 and 0.01 points respectively.

All the sectors closed red at the end of the day except Banking, Manu & Pro. and Others which reported a gain of 0.22, 32.7 and 2.89 points respectively. However, Life Insurance, Non-life Insurance and Microfinance were the top losers which lost by 52.93, 44.65 and 5.24 respectively.

RADHI, SHIVM and MMFDB underperformed the most as compared to its sector performance while AKPL, MPFL, and CEFL outperformed its respective sectors. AKPL, FOWAD and MFIL are the most volatile stock traded throughout the day. NNLB, JSLBB and LFC are trading closer to 52 weeks low while PRVU, NICA and ALBSL are trading near 52 weeks high.

UPCL hit negative circuit losing by 9.49% at the end of the trading day.

NRB has permitted BFIs to facilitate margin lending through brokers.

MAJOR MARKET NEWS

- Union Hydropower Company Limited has extended its issue of 3,534,340 units IPO shares to general public till 12th Baisakh, 2076.
- JBBL has started joint transaction after acquisition of HAMRO. Following this, JBBL becomes the development bank with highest paid up capital.
- SHIVM is conducting its AGM on 9th Baisakh, 2076. The main agenda of the AGM is to issue 15.7895% bonus shares to its shareholders and to endorse merger and acquisition with appropriate companies.
- NLICL has conducted its AGM on 15th Chaitra, 2075. The main agenda of the AGM was to issue 13.50% bonus shares to its shareholders.
- GLICL is conducting its AGM on 21st Chaitra, 2075. The main agenda of the AGM is to issue 8%



bonus shares and 50% right shares to its shareholders.

Major Events (Today)

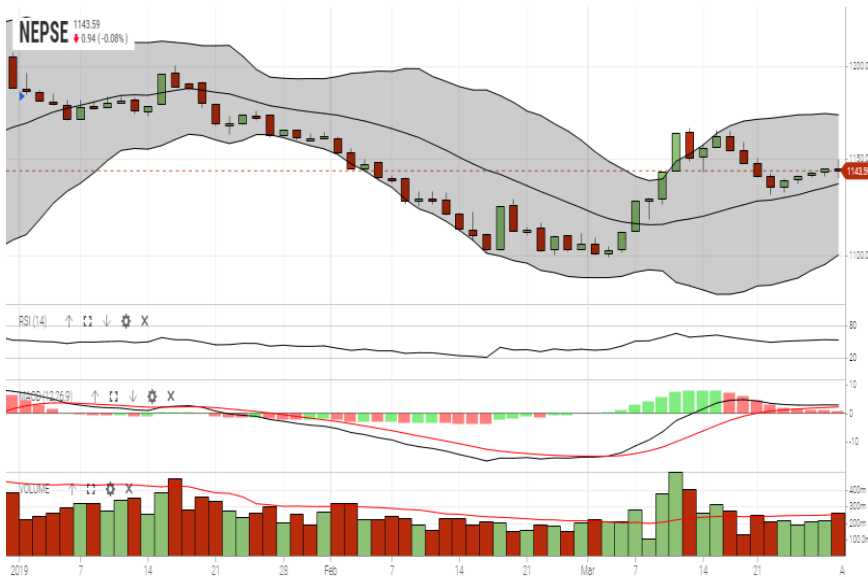
- Union Hydropower Company Limited is issuing 3,534,340 units IPO shares to general public.
- Sanima Bank Limited calls to place the bids for 2,718,835 units of promoter shares.
- Right Share Issue open for 100% and 65% of MERO, and NICL respectively.

GLOBAL INDICES		
SENSEX	38,672.91	+127.19
NIFTY	11,623.90	+53.90
S&P 500	2,834.80	+18.96
DJIA	25,928.68	+211.22
NIKKEI 225	21,205.81	+172.05

	Scrip Name	Ticker	LTP
UNDER PRICED	Agriculture Development Bank Ltd.	ADBL	295.00
	Nepal Bank Ltd.	NBL	290.00
	Bank of Kathmandu Ltd.	BOKL	242.00
	Laxmi Bank Limited	LBL	192.00
	Mega Bank Nepal Ltd.	MEGA	159.00
FAIRLY PRICED	Sunrise Bank Limited	SRBL	217.00
	Century Commercial Bank Ltd.	CCBL	165.00
	Global IME Bank Limited	GBIME	261.00
	Citizen Bank International Limited	CZBIL	209.00
	Civil Bank Limited	CBL	156.00
OVER PRICED	Standard Chartered Bank Limited	SCB	565.00
	Everest Bank Limited	EBL	561.00
	Nepal SBI Bank Limited	SBI	387.00
	Nepal Investment Bank Ltd.	NIB	528.00
	Himalayan Bank Limited	HBL	458.00

Notes: # Above pricing is performed by averaging the prices derived as per P/E, P/B and 180 days closing averages. Based on Published Q2 75/76 data.
Harmonic Mean of industries is carried for Pricings.

NEPSE TECHNICAL OUTLOOKS



Indicators used: Bollinger Bands, MACD, RSI, Moving Average (20 days) Volume

Date / Time	17.12.2075
Close	1,143.59
Open	1,144.55
High	1,149.81
Low	1,139.51
Turnover	266,606,810
Bollinger Bands Top Bollinger Bands (20,2,ma,y)	1,173.40
Bollinger Bands Median Bollinger Bands (20,2,ma,y)	1,136.84
Bollinger Bands Bottom Bollinger Bands (20,2,ma,y)	1,100.29
RSI (14)	53
MA (20, Volume, ma, 0)	254m
MACD (12,26,9)	3
Signal macd (12,26,9)	2
macd (12,26,9)_hist	1



Disclaimers: This MARKET SUMM is prepared to timely update the market participants about the Nepalese stock market before the Market opens for the day. The information and data herein should not be construed as an investment advice or recommendation. Should the investors choose to act based on this report, it shall be entirely at their own risk and KCL Astute shall not be liable, for any loss or damages incurred thereby. Unless otherwise specifically stated, the above data concerns the previous trading day.

KCL Astute Capital Limited

Address: Sundar Bhawan, Hattisar, Kathmandu
Contact No. 977-1-4429149 | 4429150, Email: info@kclastute.com