



MARKET SUMMARY		
<b>NEPSE</b>	1,307.71	-0.69%
<b>Total Turnover (Rs.)</b>	1,220,507,485	+12.10%
<b>Share Volume</b>	3,398,680	+3.77%
<b>Total Transactions</b>	12,009	-14.25%
<b>Total Market Cap. (Rs. Mill)</b>	1,634,467.09	-0.66%
<b>Floated Market Cap (Rs. Mill)</b>	567,820.26	-0.67%

<b>MARKET CAP TO GDP RATIO</b>	<b>53.98%</b> ▼
--------------------------------	-----------------

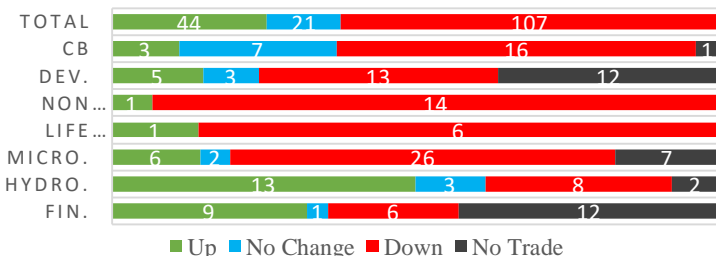
WEIGHTAGE ON MARKET CAP	
<b>Commercial Banks</b>	52.75%
<b>Development Bank</b>	4.99%
<b>Finance</b>	2.99%
<b>Microfinance</b>	5.85%
<b>Life Insurance</b>	7.91%
<b>Non-life Insurance</b>	6.11%
<b>Hydropower</b>	5.63%
<b>Hotel</b>	1.69%
<b>Manufacturing And Processing</b>	4.09%
<b>Trading</b>	0.09%
<b>Others</b>	7.88%
<b>NTC</b>	6.81%

<b>Top Gainers</b>	CORBL, MPFL, SINDU
<b>Top Losers</b>	PPCL, MLBBL, SHIVM
<b>Top Stocks by Shares Traded</b>	NBL, SHIVM, PCBLP
<b>Top Stocks by Transactions</b>	SHIVM, NBL, UPPER
<b>Top Stocks by Turnover</b>	SHIVM, NBL, HDL
<b>Top Brokers by Turnover</b>	58, 34, 45

NEPSE STATISTICS	
<b>Average Return</b>	17.72%
<b>Standard Deviation</b>	17.18%
<b>Standard Error</b>	1.14%
<b>Skewness</b>	0.45
<b>Kurtosis</b>	3.40

Notes: NEPSE Index from 2069.04.01 – 2076.02.06. Avg. annual trade day's 229. Lognormal return is used. Skewness shows market is asymmetrically skewed to right, indicating average return of 17.72% more affected by outliers. Further excess kurtosis shows fat tail and more peaked distribution than normal.

### TRADED SCRIPTS STATS



### MARKET OVERVIEW

NEPSE continued the downfall on the second trading day of the week on Monday, losing 9.13 points and closing at 1,307.71 level. Market opened with a green signal from Sunday's close, reaching to the high of 1322.85 in the initial 15 minutes before making a down path till the closing hour. However, the positive factor noticed was the increment in Turnover, Share Volume and Total transactions by 12.10%, 3.77% and 14.25% respectively. The trade of 172 scripts resulted in a total turnover of 1.22 arba. Sensitive, Float and Sensitive Float reported a loss of 0.99, 0.68 and 0.51 points respectively.

Except the Hydropower and Others sub-indices, rest all posted loss on the day. Hydropower and Others gained 16.59 and 2.76 points respectively. Major losing indices were Non-Life Insurance, Life Insurance and Manu. & Pro reporting loss of 119.25, 85.44 and 52.69 respectively. Besides, Banking and Microfinance plunged 7.27 and 16.82 points respectively.

SADBL, AHCP and RADHI underperformed the most as compared to its sector performance while JSLBB, CFCL, and MFIL outperformed its respective sectors. BPCL, RLFL and SHIVM were the most volatile stocks. SMB, SLBBL and NNLB traded closer to 52 weeks low while HDL, KSBBL and DBBL traded near to 52 weeks high.

*CORBL, MPFL, SINDU, BFC and SMB hit the positive circuit by gaining 9.91%, 9.70%, 9.29%, 9.28% and 9.09% respectively.*

### MAJOR MARKET NEWS

- NEPSE has listed 21,00,000 units ordinary Shares of UFL.
- NEPSE has listed 2,53,000 units (5%) bonus shares of KADBL for trading.
- NLIC concluded its 19<sup>th</sup> AGM on 4<sup>th</sup> Jestha, 2076. The main agenda of the AGM was to issue 25% bonus shares and 23.5% cash dividend.
- TRH has published its financial report for 3rd Quarter 75/76. The net profit of the company has increased by 29.47% on a y-o-y basis. EPS and BVPS stands at Rs. 18.90 and Rs. 146.77 respectively.

*Kalika Laghubitta (KMCDB) and Janasewi Laghubitta Bittiya Sanstha Ltd. in merger process; Trading of KMCDB has been halted by NEPSE.*



NRB issuing Rs.6 billion worth of "Development Bond 2087 Kha"; bids to be accepted till 7<sup>th</sup> Jestha, 3 pm and bonds to be issued on 8<sup>TH</sup> Jestha, 2076.

NMB Capital Ltd. made allotment of 4,63,300 units IPO issue of Janasewi Laghubitta Bittiya Sanstha Ltd.

### Major Events (Today)

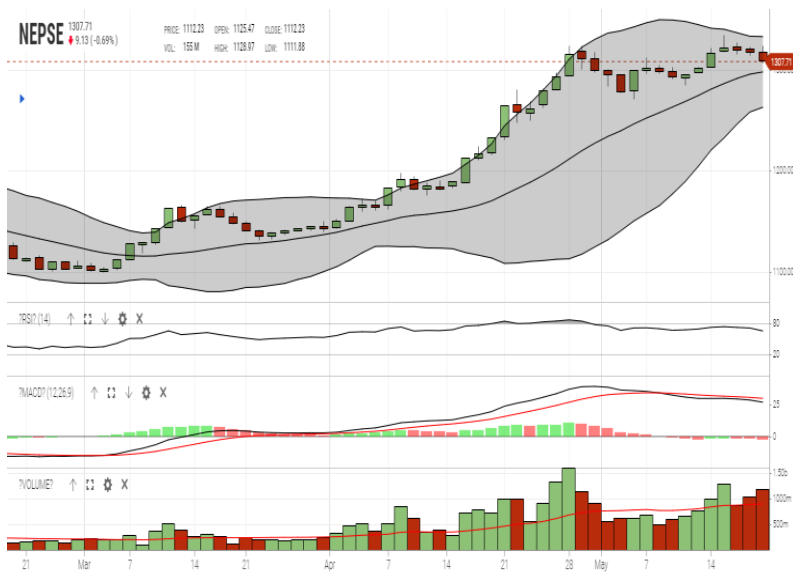
- Issue open for 50% right shares of GBLBS.
- NICL and CBL is selling its unsold right shares via auction. The bids for the auction will be accepted till 19<sup>th</sup> Jestha, 2076 and 9<sup>th</sup> Jestha, 2076 respectively.

GLOBAL INDICES		
SENSEX	39,352.67	+1421.9
NIFTY	11,828.25	+421.10
S&P 500	2,841.98	-17.55
DJIA	25,666.25	-97.75
NIKKEI 225	21,301.73	+51.64

	Scrip Name	Ticker	LTP
UNDER PRICED	Kumari Bank Ltd.	KBL	218.00
	Nepal Bank Ltd.	NBL	338.00
	Civil Bank Ltd.	CBL	148.00
	Century Commercial Bank Limited	CCBL	168.00
	Nepal Bangladesh Bank Limited	NBB	225.00
FAIRLY PRICED	Laxmi Bank Limited	LBL	223.00
	Agriculture Development Bank Limited	ADBL	418.00
	Global IME Bank Limited	GBIME	310.00
	Sunrise Bank Limited	SRBL	260.00
	Mega Bank Nepal Ltd.	MEGA	197.00
OVER PRICED	Standard Chartered Bank Limited	SCB	689.00
	Himalayan Bank Limited	HBL	600.00
	Everest Bank Limited	EBL	662.00
	Nepal SBI Bank Limited	SBI	480.00
	Nabil Bank Limited	NABIL	830.00

**Notes:** # Above pricing is performed by averaging the prices derived as per P/E, P/B and 180 days closing averages. Based on Published Q3 75/76 data.  
# Harmonic Mean of industries is carried for Pricings.

### NEPSE TECHNICAL OUTLOOKS



Indicators used: Bollinger Bands, MACD, RSI, Moving Average (20 days) Volume

Date / Time	06.02.2076
Close	1307.71
Open	1316.93
High	1322.85
Low	1305.43
Turnover	1,220,507,485
Bollinger Bands Top Bollinger Bands (20,2,ma,y)	1332.44
Bollinger Bands Median Bollinger Bands (20,2,ma,y)	1295.37
Bollinger Bands Bottom Bollinger Bands (20,2,ma,y)	1297.54
RSI (14)	66
MA (20, Volume, ma, 0)	901m
MACD (12,26,9)	27
Signal macd (12,26,9)	30
macd (12,26,9)_hist	-3



**Disclaimers:** This MARKET SUMM is prepared to timely update the market participants about the Nepalese stock market before the Market opens for the day. The information and data herein should not be construed as an investment advice or recommendation. Should the investors choose to act based on this report, it shall be entirely at their own risk and KCL Astute shall not be liable, for any loss or damages incurred thereby. Unless otherwise specifically stated, the above data concerns the previous trading day.

### KCL Astute Capital Limited

Address: Sundar Bhawan, Hattisar, Kathmandu  
 Contact No. 977-1-4429149 | 4429150,  
 Email: info@kclastute.com