



NEPSE Index – Wednesday



MARKET SUMMARY

NEPSE	1,214.05	+0.03%
Total Turnover (Rs.)	292,641,718	+7.39%
Share Volume	1,270,118	+8.23%
Total Transactions	6,249	-0.51%
Total Market Cap. (Rs. Mill)	1,541,058.22	+0.03%
Floated Market Cap (Rs.Mill)	554,065.56	0.00%

MARKET CAP TO GDP RATIO 51.24% ▲

WEIGHTAGE ON MARKET CAP

Commercial Banks	52.58%
Development Bank	5.23%
Finance	2.95%
Microfinance	6.36%
Life Insurance	7.23%
Non-life Insurance	5.45%
Hydropower	6.73%
Hotel	1.73%
Manufacturing And Processing	4.08%
Trading	0.11%
Others	7.57%
NTC	6.51%

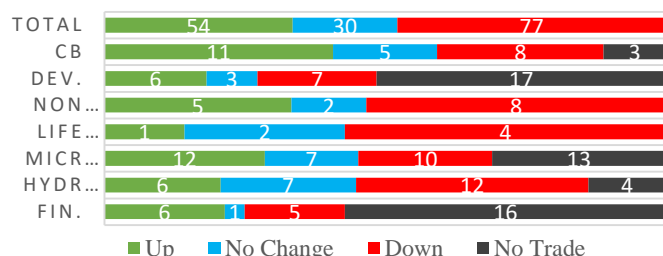
Top Gainers	BBC, PPCL, JFL
Top Losers	GBFBS, NADEP, SMB
Top Stocks by Shares Traded	SHL, MBL, RHPL
Top Stocks by Transactions	SJCL, RHPL, UPPER
Top Stocks by Turnover	SHL, MBL, NICA
Top Brokers by Transactions	34, 33, 45

NEPSE STATISTICS

Average Return	15.98%
Standard Deviation	16.93%
Skewness	0.47
Kurtosis	3.54

Notes: NEPSE Index from 2069.04.01 – 2076.05.04. Avg. annual trade day's 229. Lognormal return is used. Skewness shows market is asymmetrically skewed to right, indicating average return of 15.98% more affected by outliers. Further excess kurtosis shows fat tail and more peaked distribution than normal.

TRADED SCRIPTS STATS



MAJOR MARKET NEWS

- Market closed with Green candle on Wednesday. Market reported a meagre gain of 0.42 points and NEPSE closed at 1214.05 level.
- Sensitive and Sensitive Float Index gained by 0.22, and 0.07 points respectively.
- WMBF Q4 75/76 y-so-y Net profit decreased by 91.91% to Rs.48.93 lakhs; EPS Rs.2.69 BVPS Rs.(25.49)
- GUFL Q4 75/76 y-so-y Net profit increased by 532.33% to Rs.7.10 crores; EPS Rs.8.20 BVPS Rs.160.91
- The 34.60% ownership of NEPSE is sold via auction by NRB divesting its ownership. Around 20% of the shares is subscribed by institutions. The remaining 14.6% ownership remains unsubscribed.
- NEPSE suspends the application from the commercial bank's subsidiary requesting for brokerage license on the grounds of letter received from Finance Committee.
- 1,650,000 units IPO shares of Sabaiko Laghubitta Bittiya Sanstha Limited is listed on NEPSE.
- The 53rd BOD meet of Ganapati Microfinance has proposed 7% bonus shares to its shareholders for FY 75/76.
- SICL Q4 75/76 y-o-y Net profit increased by 18.46% to Rs.47.29 crores; EPS Rs. 44.73 and BVPS Rs.81.12

Today Events

- Auction Alert:** EIC is selling its 383,205 units ordinary shares and 146,575 units promoter shares via auction. Issue open till 8th Bhadra.
- Auction Alert:** CBL is selling its 1,282,881 units promoter shares via auction. Issue open till 16th Bhadra
- Right Shares Alert:** GILB is issuing 100% right shares to its shareholders. Issue open till 23rd Bhadra.
- Right Shares Alert:** WOMI is issuing 100% right shares to its shareholders. Issue open till 11th Bhadra.
- Right Shares Alert:** MPFL is issuing 865% right shares to its shareholders. Issue open till 9th Bhadra.
- Right Shares Alert:** UIC is issuing 240% right shares to its shareholders from today. Issue open till 6th Ashwin.
- NFO Alert:** SIGS2 worth Rs.1.40 billion (140 million units at Rs.10 each).
- NFO Alert:** NMB 50 worth Rs.1.20 billion (120 million units at Rs.10 each). *Issue date extended.*
- NFO Alert:** NIC ASIA Balance Fund worth Rs.1.25 billion (125 million units at Rs.10 each). *Extended*

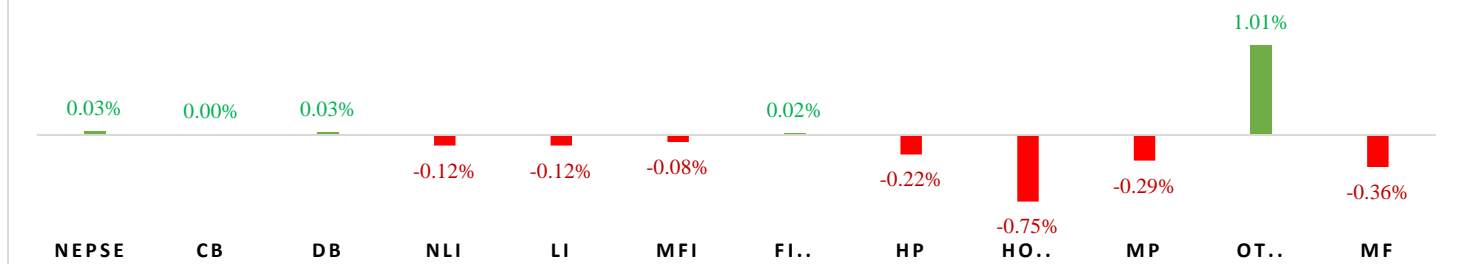
Fundamental Watch: Quarter 4 2075/76 Unaudited Reports



MARKET SUMM...

5th Bhadra, 2076 Thursday

INDICES % CHANGE



Volatile Stocks

PPCL	(109)	12.37%
GMFBS	(538)	8.57%
SPARS	(600)	7.98%

Stock Movement

DHPL	(57)	Lowest till now
UPCL	(82)	Lowest till now
HPPL	(154)	Lowest till now

Highest Volume – Day 4 (Week 6)

SHL	(228)	568,993 units
NEF	(7.81)	396,704 units
RHPL	(200)	292,882 units

Sectorial Outlooks

Bullish	Bearish
-	Banking
-	Non-Life Insurance

Stock Pick...

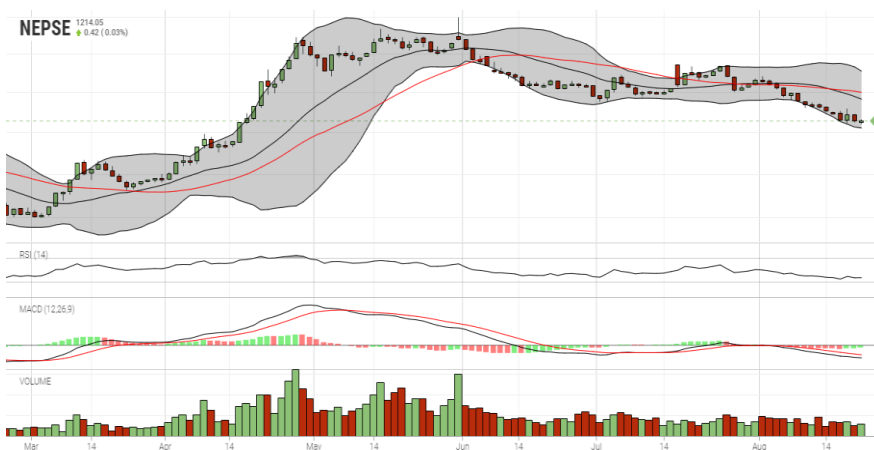
Up Pick	Down Pick
SBI	NIB
SLBSL	SIC

Financial Metrics

S.N.	Ticker	LTP	EPS	BVPS	P/E	P/B	ROE	NPL	CAR	Remarks
1	SICL	780	44.73	250.17	17.44	3.12	19.64%	-	-	-
1	SIC	575	27.62	191.17	20.82	3.01	15.57%	-	-	-
2	JSLBB	975	73.73	327.01	13.22	2.98	26.99%	2.23%	8.37%	-
3	NIL	399	29.22	195.90	13.66	2.04	16.12%	-	-	-
5	BFC	95	9.92	87.53	9.58	1.09	17.56%	18.46%	17.17%	-

Note: If asterisk sign (*) financial metrics denotes Quarter 3 75/76 data, otherwise financial metrics are of Quarter 4 75/76 data.

NEPSE TECHNICAL OUTLOOKS



Date / Time	04.05.2076
Close	1214.05
Open	1213.97
High	1216.31
Low	1209.77
Bollinger Bands Top (20,2,ma,y)	1277.54
Bollinger Bands Median (20,2,ma,y)	1241.41
Bollinger Bands Bottom (20,2,ma,y)	1205.27
RSI (14)	31
MA (35, ma, 0)	1250.04
MACD (12,26,9)	-12
Signal macd (12,26,9)	-9
macd (12,26,9)_hist	-3

Indicators used: Bollinger Bands, MACD, RSI, Moving Average (35 days) Volume

Global Indices	SENSEX	NIFTY	S&P 500	DJIA	NIKKEI 225
	37,060.37 (-0.72%)	10,918.70 (-0.89%)	2,900.51 (-0.79%)	25,962.44 (-0.66%)	20,618.57 (-0.28%)



Disclaimers: This MARKET SUMM is prepared to timely update the market participants about the Nepalese stock market before the Market opens for the day. The information and data herein should not be construed as an investment advice or recommendation. Should the investors choose to act based on this report, it shall be entirely at their own risk and KCL Astute shall not be liable, for any loss or damages incurred thereby. Unless otherwise specifically stated, the above data concerns the previous trading day.

KCL Astute Capital Limited

Address: Sundar Bhawan, Hattisar, Kathmandu

Contact No. 977-1-4429149 | 4429150

Email: info@kclastute.com

KCL ASTUTE CAPITAL RESEARCH TEAM