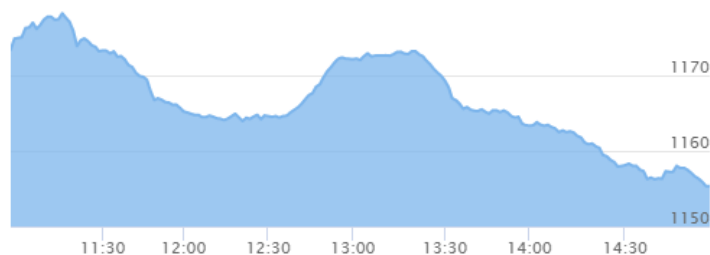




## NEPSE Index – Thursday



### MARKET SUMMARY

NEPSE	1,155.30	-1.54%
Total Turnover (Rs.)	399,930,871	-16.13%
Share Volume	1,224,572	-25.60%
Total Transactions	7,535	-4.34%
Total Market Cap. (Rs. Mill)	1,467,449.68	-1.54%
Floated Market Cap (Rs. Mill)	530,720.69	-1.41%

MARKET CAP TO GDP RATIO 48.79% ▼

### WEIGHTAGE ON MARKET CAP

Commercial Banks	53.21%
Development Bank	5.37%
Finance	2.92%
Microfinance	6.62%
Life Insurance	6.82%
Non-life Insurance	5.24%
Hydropower	6.47%
Hotel	1.72%
Manufacturing And Processing	4.18%
Trading	0.11%
Others	7.32%
NTC	6.31%

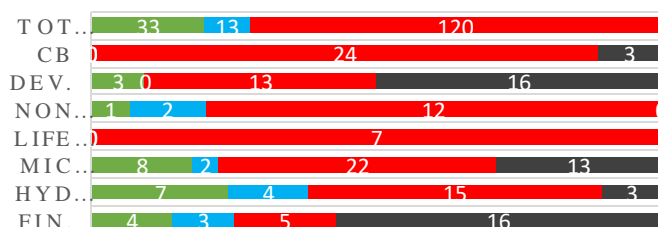
Top Gainers	SMATA, EDBL, NMFBS
Top Losers	GLBSL, SPARS, NICL
Top Stocks by Shares Traded	PRVU, SHIVM, DBBL
Top Stocks by Transactions	RHPL, SJCL, SHIVM
Top Stocks by Turnover	SHIVM, PRVU, SBL
Top Brokers by Transactions	34, 58, 49

### NEPSE STATISTICS

Average Return	15.10%
Standard Deviation	16.93%
Skewness	0.47
Kurtosis	3.49

Notes: NEPSE Index from 2069.04.01 – 2076.06.02. Avg. annual traded day's 229. Lognormal return is used. Skewness shows market is asymmetrically skewed to right, indicating average return of 15.10% more affected by outliers. Further excess kurtosis shows fat tail and more peaked distribution than normal.

### TRADED SCRIPTS STATS



■ Up ■ No Change ■ Down ■ No Trade

### MAJOR MARKET NEWS

- Market took a downturn losing 18.12 points on Thursday after a gain of 46.16 points combined in the time period of 2 days. NEPSE closed at 1155.30 level.
- Sensitive, Float and Sensitive Float Index lost by 3.49, 1.22 and 0.96 points respectively.
- All the sub-indices closed red at the end of the trading day except Trading and Mutual Fund which gained by 2.37 and 0.02 points respectively. Life Insurance followed by Non-Life Insurance lost most by 105.6 and 105.32 points respectively.
- SMATA hit positive circuit at the end of the day gaining 10%.
- NMFBS proposed 75% bonus shares and 5% cash dividend to its shareholders.
- UMB proposed 38.60% bonus shares and 2.03% cash dividend to its shareholders.
- 891,874.35 unit bonus shares is listed on NEPSE for trading.
- SEBON directs CDSC and all brokers to begin the margin trading facilities as soon as possible.
- 891,874.35 units bonus shares of RLFL is listed in NEPSE for trading.
- 5% Bonus shares of API to be credited to the demat account of respective shareholders.
- KBL is calling its shareholders on 11<sup>th</sup> Ashwin to attend 19<sup>th</sup> AGM. The special agenda of the AGM is to issue 10% bonus shares and cash dividend for tax purposes.
- NICA is calling its shareholders on 10<sup>th</sup> Ashwin to attend 22<sup>nd</sup> AGM. The special agenda of the AGM is to issue 10% bonus shares and 11.0526% cash dividend.

### Today's Events (Sunday)

- Auction Alert:** GBLBS is selling its 299,982 units promoter shares via auction till 4<sup>th</sup> Kartik.
- Right Shares Alert:** MNBBL is issuing 20% Right
- Right Shares Alert:** SLICL is issuing 70% Right
- Right Shares Alert:** UIC is issuing 240% Right

### New Fund Offerings (Upcoming)

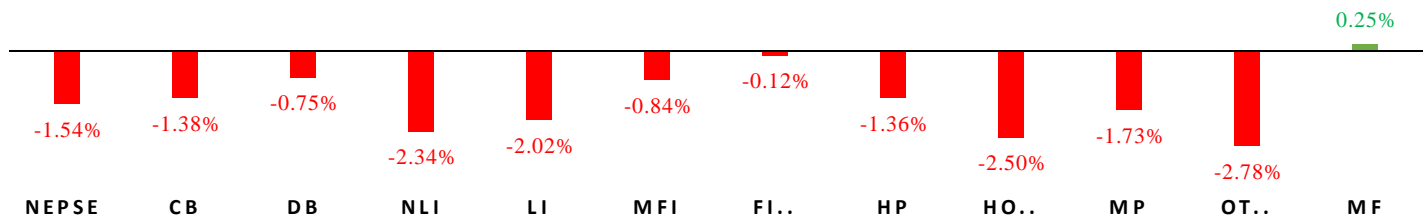
	Schemes	Units	@ Rs.	Open
1	Sunrise First Mutual Fund	100,000,000	10	8 <sup>th</sup> Ashoj



# MARKET SUMM...

5<sup>th</sup> Ashwin, 2076 Sunday

## INDICES % CHANGE



### Volatile Stocks

NMFBS	(1745)	9.76%
GLBSL	(454)	9.49%
SPARS	(553)	8.86%

### Stock Movement

KPCL	(81)	Lowest till now
GGBSL	(251)	Highest till now
SMATA	(594)	Highest till now

### Highest Volume – Day 5 (Week 10)

SBL	(329)	360,061 units
NBL	(319)	343,932 units
RHPL	(163)	289,089 units

### Sectorial Outlooks

#### Bullish

Development Bank

-

#### Bearish

Mutual Fund

Banking

### Stock Pick...

#### Up Pick

NMFBS

UMB

#### Down Pick

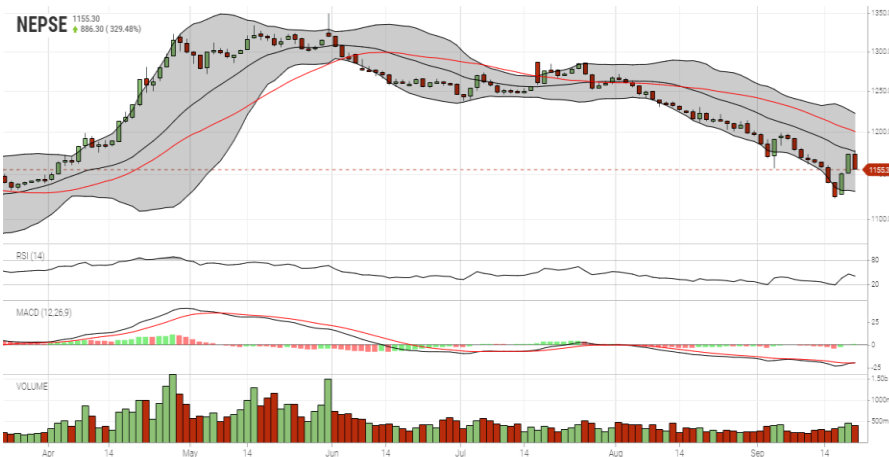
EIC

PPCL

### Financial Metrics

S.N.	Ticker	LTP	EPS	BVPS	P/E	P/B	ROE	NPL	CAR	Remarks
1	SHIVM	572	34.16	194.6	16.74	2.94	20.29%	-	-	-
2	LLBS	666	45.84	201.11	14.53	3.31	25.61%	1.26%	13.31%	-
2	JSLBB	995	73.73	327.01	13.50	3.04	26.99%	2.23%	8.37%	-
3	NIL	375	29.22	195.90	12.83	1.91	16.12%	-	-	-
5	SABSL	469	27.87	128.75	16.83	3.64	27.75%	0.45%	9.76%	13% Bonus Proposal

### NEPSE TECHNICAL OUTLOOKS



Date / Time	02.06.2076
Close	1155.30
Open	1173.44
High	1178.28
Low	1155.30
Bollinger Bands Top (20,2,ma,y)	1221.90
Bollinger Bands Median (20,2,ma,y)	1176.26
Bollinger Bands Bottom (20,2,ma,y)	1130.62
RSI (14)	40
MA (35, Price, ma, 0)	1,199.97
MACD (12,26,9)	-20
Signal macd (12,26,9)	-20
macd (12,26,9)_hist	-0

Indicators used: Bollinger Bands, MACD, RSI, Moving Average (35 days) Volume

<b>Global Indices</b>	<b>SENSEX</b> 36,093.47 (-1.29%)	<b>NIFTY</b> 10,704.80 (-1.25%)	<b>S&amp;P 500</b> 3,006.73 (+0.03%)	<b>DJIA</b> 27,147.08 (+0.13%)	<b>NIKKEI 225</b> 22,044.45 (+0.38%)
-----------------------	-------------------------------------	------------------------------------	---	-----------------------------------	---



Disclaimers: This MARKET SUMM is prepared to timely update the market participants about the Nepalese stock market before the Market opens for the day. The information and data herein should not be construed as an investment advice or recommendation. Should the investors choose to act based on this report, it shall be entirely at their own risk and KCL Astute shall not be liable, for any loss or damages incurred thereby. Unless otherwise specifically stated, the above data concerns the previous trading day.

### KCL Astute Capital Limited

Address: Sundar Bhawan, Hattisar, Kathmandu

Contact No. 977-1-4429149 | 4429150

Email: [info@kclastute.com](mailto:info@kclastute.com)