



MARKET SUMMARY		
NEPSE	1256.94	-0.57%
Total Turnover (Rs.)	1,046,039,903	+0.88%
Share Volume	3,259,496	-3.43%
Total Transactions	10,918.00	+2.31%
Total Market Cap. (Rs. Mill)	1,556,766.84	-0.43%
Floated Market Cap (Rs. Mill)	547,895.83	-0.86%

MARKET CAP TO GDP RATIO	51.76%	▼
-------------------------	--------	---

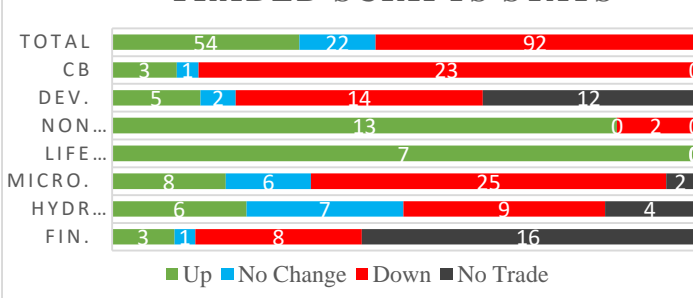
WEIGHTAGE ON MARKET CAP	
Commercial Banks	54.45%
Development Bank	4.90%
Finance	3.03%
Microfinance	5.99%
Life Insurance	7.68%
Non-life Insurance	6.17%
Hydropower	5.34%
Hotel	1.53%
Manufacturing And Processing	3.17%
Trading	0.10%
Others	7.65%
NTC	6.66%

Top Gainers	EIC, GILB, UNL
Top Losers	MHNL, SBI, NHPC
Top Stocks by Shares Traded	NBL, CBL, PRVU
Top Stocks by Transactions	NBL, SCB, CBL
Top Stocks by Turnover	NBL, CBL, PRVU
Top Brokers by Turnover	34, 49, 58

NEPSE STATISTICS	
Average Return	17.38%
Standard Deviation	17.22%
Standard Error	1.14%
Skewness	0.45
Kurtosis	3.40

Notes: NEPSE Index from 2069.04.01 – 2076.01.09. Avg. annual trade day's 229. Lognormal return is used. Skewness shows market is asymmetrically skewed to right, indicating average return of 17.38% more affected by outliers. Further excess kurtosis shows fat tail and more peaked distribution than normal.

TRADED SCRIPTS STATS



MARKET OVERVIEW

NEPSE reported a loss in its index after gain for 5 consecutive days. Market reported loss of 7.26 points closing at 1256.94 on Monday. The highest index reached throughout the day was 1280.08 while the lowest index reached was 1246.97. Turnover and total transactions increased by a marginal 0.88% and 2.31% respectively. The trade of 168 scripts resulted in a total turnover of Rs. 1.05 arba. Sensitive, Float and Sensitive Float reported a marginal loss of 2.04, 0.83 and 0.87 points respectively.

Most of the sectors closed red at the end of the day. Sectors that reported the top losses were Hotels followed by Microfinance and Development Banks that lost by 24.97, 20.98 and 12.98 points respectively. However, Sectors to gain the most at the end of the trading day were Life Insurance followed by Non-Life Insurance and Manu & Pro. which reported gain of 154.29, 64.85 and 23.98 points respectively.

MHNL, KMCDB and NHPC underperformed the most as compared to its sector performance while GILB, SCB and NADEP outperformed its respective sectors. GLICL, SBI and GILB are the most volatile stock traded throughout the day. MHNL, KPCL and RADHI are trading closer to 52 weeks low while NIBPO, NMB and GBIME are trading near to 52 weeks high.

EIC hit positive circuit by gaining 9.77% at the end of the trading day. Whereas, MHNL is the top loser that lost by 5.21%.

MAJOR MARKET NEWS

- Book Closure for Civil Bank Ltd's AGM is 10th Baisakh, 2076. The main agenda for the AGM is to issue 10.25% bonus shares of FY 2073/74 and 4.05% cash dividend of FY 2074/75.
- GILB has published 3rd Quarter report. Net Profit is increased by 255.71% on y-o-y basis. EPS and BVPS stands at Rs. 49.28 and Rs. 150.11 respectively.
- IPO of Union Hydropower Company Limited is subscribed by 96.20%. The issue is still open for subscription.
- IPO of Ganapati Microfinance is already oversubscribed by 3 times on its first day of issue.
- IPO of Sanjen Jalbidhyut is oversubscribed by 1.30 times on Monday whereas that of Rasuwagadhi is subscribed by almost 80% on the same date. Both IPO received ICRA Grade 4+ for their respective issue.



Major Events (Today)

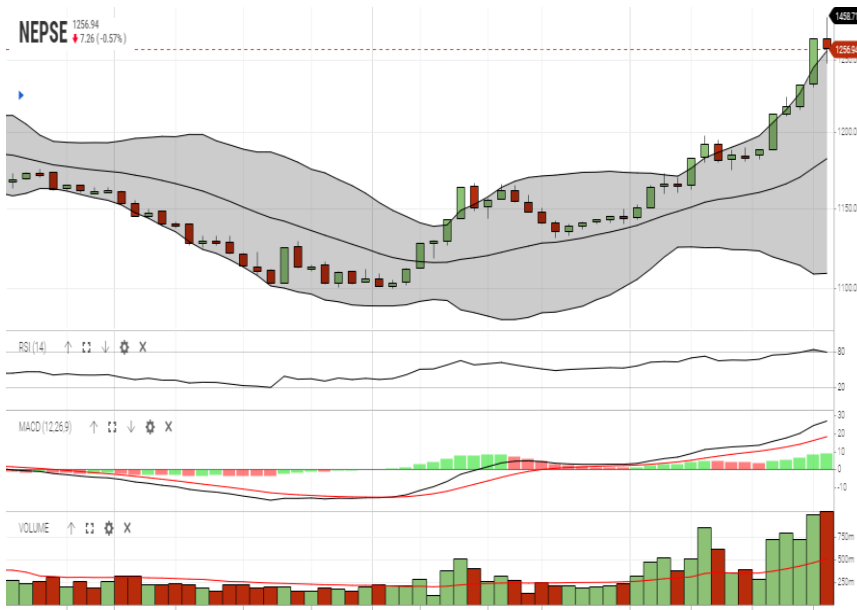
- Union Hydropower Company Limited is issuing 3,534,340 units IPO shares to general public.
- Sanjen and Rasuwagadhi is issuing 4,982,250 units and 9,339,469 units IPO shares to general public respectively.
- Nepal Agro Laghubitta Bittiya Sanstha Ltd is issuing 151,200 units IPO shares to public.
- Ganapati Microfinance Bittiya Sanstha Ltd is issuing 313,075 units IPO shares to general public.
- Issue open for 60% and 50% right shares of ALICL, and GLICL.

GLOBAL INDICES		
SENSEX	38,645.18	-495.10
NIFTY	11,594.45	-158.35
S&P 500	2,905.03	+4.58
DJIA	26,559.54	+110.00
NIKKEI 225	22,232.10	+31.54

	Scrip Name	Ticker	LTP
UNDER PRICED	Nepal Bank Ltd.	NBL	310.00
	Agriculture Development Bank Ltd.	ADBL	342.00
	Kumari Bank Ltd.	KBL	225.00
	Nepal Credit and Commerce Ltd.	NCCB	233.00
	Century Commercial Bank Ltd	CCBL	171.00
FAIRLY PRICED	Janata Bank Nepal Ltd.	JBNL	191.00
	Bank of Kathmandu Ltd.	BOKL	277.00
	Mega Bank Nepal Ltd.	MEGA	179.00
	Citizen Bank International Ltd.	CZBIL	227.00
	Prabhu Bank Limited	PRVU	275.00
OVER PRICED	Standard Chartered Bank Limited	SCB	710.00
	Nepal SBI Bank Limited	SBI	497.00
	Everest Bank Limited	EBL	670.00
	Himalayan Bank Limited	HBL	560.00
	NIC Asia Bank Limited	NICA	484.00

Notes: # Above pricing is performed by averaging the prices derived as per P/E, P/B and 180 days closing averages. Based on Published Q2 75/76 data.
Harmonic Mean of industries is carried for Pricings.

NEPSE TECHNICAL OUTLOOKS



Date / Time	09.01.2076
Close	1,256.94
Open	1,264.77
High	1,280.08
Low	1,246.97
Turnover	1,046,039,903
Bollinger Bands Top Bollinger Bands (20,2,ma,y)	1,256.10
Bollinger Bands Median Bollinger Bands (20,2,ma,y)	1,182.48
Bollinger Bands Bottom Bollinger Bands (20,2,ma,y)	1,108.86
RSI (14)	80
MA (20, Volume, ma, 0)	506m
MACD (12,26,9)	27
Signal macd (12,26,9)	18
macd (12,26,9)_hist	9

Indicators used: Bollinger Bands, MACD, RSI, Moving Average (20 days) Volume



Disclaimers: This MARKET SUMM is prepared to timely update the market participants about the Nepalese stock market before the Market opens for the day. The information and data herein should not be construed as an investment advice or recommendation. Should the investors choose to act based on this report, it shall be entirely at their own risk and KCL Astute shall not be liable, for any loss or damages incurred thereby. Unless otherwise specifically stated, the above data concerns the previous trading day.

KCL Astute Capital Limited

Address: Sundar Bhawan, Hattisar, Kathmandu

Contact No. 977-1-4429149 | 4429150, Email: info@kclastute.com