



NEPSE Index – Monday



MARKET SUMMARY

NEPSE	1,140.98	+0.15%
Total Turnover (Rs.)	177,279,039	-21.89%
Share Volume	743,315	-12.41%
Total Transactions	4,684	-20.56%
Total Market Cap. (Rs. Mill)	1,449,546.48	+0.17%
Floated Market Cap (Rs. Mill)	523,809.23	+0.14%

MARKET CAP TO GDP RATIO **48.20%** ▲

WEIGHTAGE ON MARKET CAP

Commercial Banks	53.35%
Development Bank	5.38%
Finance	2.94%
Microfinance	6.58%
Life Insurance	6.81%
Non-life Insurance	5.16%
Hydropower	6.34%
Hotel	1.69%
Manufacturing And Processing	4.13%
Trading	0.12%
Others	7.50%
NTC	6.50%

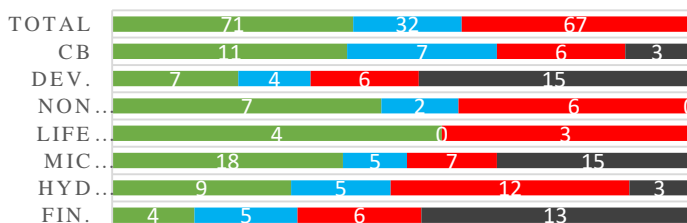
Top Gainers	STC, SFFIL, JOSHI
Top Losers	UNHPL, MHNL, AKJCL
Top Stocks by Shares Traded	PRVU, CBL, NBB
Top Stocks by Transactions	RHPL, SJCL, SHIVM
Top Stocks by Turnover	PRVU, SHIVM, SBL
Top Brokers by Transactions	RHPL, SJCL, SHIVM

NEPSE STATISTICS

Average Return	14.91%
Standard Deviation	16.92%
Skewness	0.47
Kurtosis	3.49

Notes: NEPSE Index from 2069.04.01 – 2076.06.06. Avg. annual trade day's 229. Lognormal return is used. Skewness shows market is asymmetrically skewed to right, indicating average return of 14.91% more affected by outliers. Further excess kurtosis shows fat tail and more peaked distribution than normal.

TRADED SCRIPTS STATS



■ Up ■ No Change ■ Down ■ No Trade

MAJOR MARKET NEWS

- Market closed with a bullish candle at the end of Monday's trading hours gaining by marginal 1.73 points. NEPSE closed at 1140.98 level.
- Sensitive, Float and Sensitive Float Index all gained by 0.1, 0.1 and 0.03 points respectively.
- All the sub-indices closed green except Hydropower, Finance and Mutual Fund which lost by 0.68, 0.17 and 0.06 points respectively.
- CLBSL proposed 5% bonus shares and 5% cash dividend to its shareholders.
- Adjusted price for 60% right shares of SFFIL is set at Rs. 192.50
- SANIMA is calling its shareholders to attend 15th AGM on 29th Ashwin. The main agenda of the AGM is to issue 10% bonus shares and 11.0526% cash dividend to its shareholders.
- JBNL proposed 6% bonus shares and 6% cash dividend to its shareholders.
- SEBON forms two committees. One is dedicated to revise the brokerage charges and the other to formulate Trustee Act as mentioned in the Budget of 2076/77.
- NEPSE suspends the trading license of Sagarmatha Securities for a day following the violation of Securities Market Membership and Trading Regulation, 2055.

Today's Events (Tuesday)

- SGM of PLIC today. 12.50% bonus shares.
- Separate SGM of NCDB and Tinau Mission. Agenda includes acquisition of NCDB by the latter.
- Right Shares Alert:** MNBBL is issuing 20% Right
- Right Shares Alert:** SLICL is issuing 70% Right
- Right Shares Alert:** UIC is issuing 240% Right. *Extended*
- Auction Alert:** GBLBS is auctioning its 299,982 units promoter shares via auction till 4th Kartik.
- Auction Alert:** WOMI is auctioning its 46,509 units Ordinary Shares and 76,704 units Promoter shares

New Fund Offerings (Upcoming)

	Schemes	Units	@ Rs.	Open
1	Sunrise First Mutual Fund	100,000,000	10	8 th Ashoj

Debenture Offering (Upcoming)

	Schemes	Units	@ Rs.
1	10% Laxmi Bank Debenture 2086	2,000,000	1000

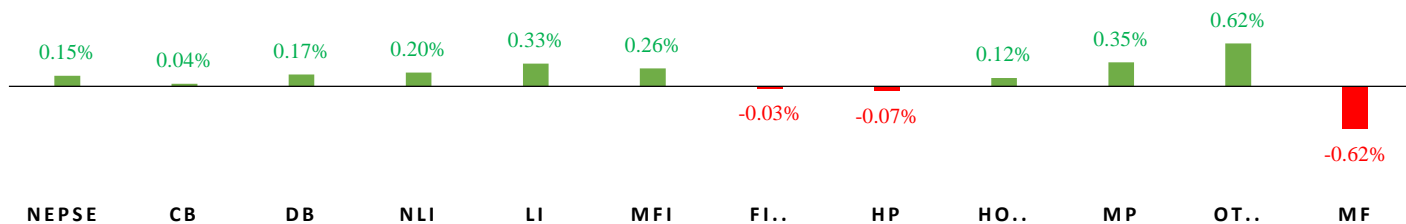


MARKET SUMM...



7th Ashwin, 2076 Tuesday

INDICES % CHANGE



Volatile Stocks

RRHP	(110)	7.84%
SMATA	(535)	7.1%
SFFIL	(200)	6.74%

Stock Movement

STC	(658)	Highest till now
JOSHI	(59)	Lowest till now
SHPC	(188)	Lowest till now

Highest Volume – Day 2 (Week 11)

GDBLPO	(122)	135,759 units
PRVU	(261)	61,239 units
RHPL	(154)	60,062 units

Sectorial Outlooks

Bullish	Bearish
Development Bank	Microfinance
-	Banking

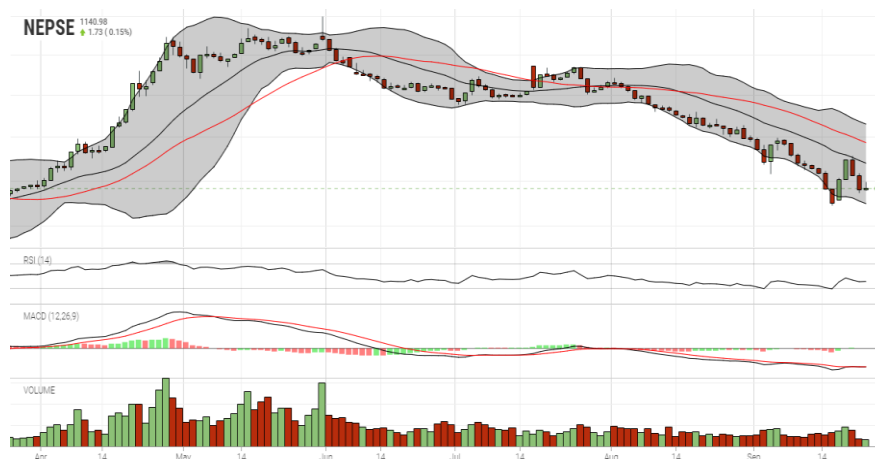
Stock Pick...

Up Pick	Down Pick
CEFL	EIC
UMB	SMATA

Financial Metrics

S.N.	Ticker	LTP	EPS	BVPS	P/E	P/B	ROE	NPL	CAR	Remarks
1	SHIVM	553	34.16	194.6	16.19	2.84	20.29%	-	-	-
2	LLBS	660	45.84	201.11	14.40	3.28	25.61%	1.26%	13.31%	-
2	JSLBB	999	73.73	327.01	13.55	3.05	26.99%	2.23%	8.37%	-
3	NIL	361	29.22	195.90	12.35	1.84	16.12%	-	-	-
5	SABSL	462	27.87	128.75	16.58	3.59	27.75%	0.45%	9.76%	13% Bonus Proposal

NEPSE TECHNICAL OUTLOOKS



Date / Time	06.06.2076
Close	1140.98
Open	1139.92
High	1147.86
Low	1137.87
Bollinger Bands Top (20,2,ma,y)	1215.06
Bollinger Bands Median (20,2,ma,y)	1169.63
Bollinger Bands Bottom (20,2,ma,y)	1124.21
RSI (14)	36
MA (35, Price, ma, 0)	1193.27
MACD (12,26,9)	-20
Signal macd (12,26,9)	-20
macd (12,26,9)_hist	-0

Indicators used: Bollinger Bands, MACD, RSI, Moving Average (35 days) Price

Global Indices	SENSEX	NIFTY	S&P 500	DJIA	NIKKEI 225
	39,090.03 (+2.83%)	11,600.20 (+2.89%)	2,992.03 (-0.49%)	26,935.07 (-0.59%)	22,079.09 (+0.16%)



Disclaimers: This MARKET SUMM is prepared to timely update the market participants about the Nepalese stock market before the Market opens for the day. The information and data herein should not be construed as an investment advice or recommendation. Should the investors choose to act based on this report, it shall be entirely at their own risk and KCL Astute shall not be liable, for any loss or damages incurred thereby. Unless otherwise specifically stated, the above data concerns the previous trading day.

KCL Astute Capital Limited

Address: Sundar Bhawan, Hattisar, Kathmandu

Contact No. 977-1-4429149 | 4429150

Email: info@kclastute.com