



MARKET SUMMARY		
NEPSE	1,260.68	+0.30%
Total Turnover (Rs.)	614,147,411	-41.29%
Share Volume	1,801,522	-44.73%
Total Transactions	6,660	-39.00%
Total Market Cap. (Rs. Mill)	1,561,440.10	+0.30%
Floated Market Cap (Rs. Mill)	549,399.50	+0.27%

MARKET CAP TO GDP RATIO	51.76%	▲
-------------------------	--------	---

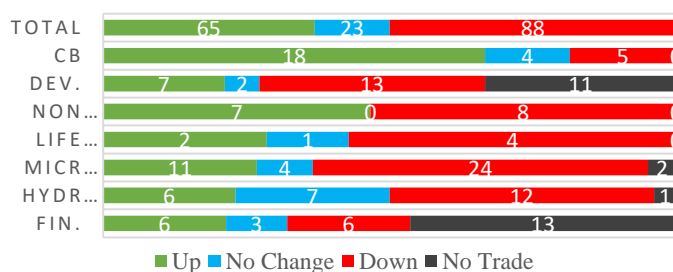
WEIGHTAGE ON MARKET CAP	
Commercial Banks	54.60%
Development Bank	4.88%
Finance	3.01%
Microfinance	5.96%
Life Insurance	7.64%
Non-life Insurance	6.17%
Hydropower	5.30%
Hotel	1.51%
Manufacturing And Processing	3.23%
Trading	0.10%
Others	7.61%
NTC	6.64%

Top Gainers	EIC, SIFC, RADHI
Top Losers	GHL, AKPL, BHBL
Top Stocks by Shares Traded	NBL, NMB, PRVU
Top Stocks by Transactions	UPPER, NMB, SCB
Top Stocks by Turnover	CBBL, NBL, NMB
Top Brokers by Turnover	49, 44, 45

NEPSE STATISTICS	
Average Return	17.42%
Standard Deviation	17.22%
Standard Error	1.14%
Skewness	0.45
Kurtosis	3.40

Notes: NEPSE Index from 2069.04.01 – 2076.01.10. Avg. annual trade day's 229. Lognormal return is used. Skewness shows market is asymmetrically skewed to right, indicating average return of 17.42% more affected by outliers. Further excess kurtosis shows fat tail and more peaked distribution than normal.

TRADED SCRIPTS STATS



MARKET OVERVIEW

NEPSE reported a meagre gain in its index by gaining 3.74 points to close at 1260.68 on Tuesday. The highest index reached throughout the day was 1268.32 while the lowest index reached was 1248.50. Turnover, share volume and total transactions all decreased by 41.29%, 44.73% and 39% respectively. The trade of 176 scripts resulted in a total turnover of Rs. 61.41 crores. Sensitive, Float and Sensitive Float reported a marginal gain of 0.9, 0.25 and 0.29 points respectively.

Sectors that reported the most losses at the end of the trading day were Life Insurance followed by Hotels and Microfinance lost by 22.22, 17.37 and 4.95 points respectively. However, Sectors to gain the most at the end of the trading day were Manu & Pro followed by Non-Life Insurance and Banking which reported gain of 46.08, 16.41 and 6.66 points respectively.

GHL and AKPL underperformed the most as compared to its sector performance while CBL outperformed its respective sectors. NMFBS, RADHI and EIC are the most volatile stock traded throughout the day. RADHI, MHNL and UPCL are trading closer to 52 weeks low while NABILP, GBBL and JBBL are trading near to 52 weeks high.

EIC hit positive circuit by gaining 9.89% at the end of the trading day. Whereas, GHL is the top loser that lost by 4.79%.

MAJOR MARKET NEWS

- IPO of Nepal Agro Bittiya Sanstha Ltd is already oversubscribed by 19.05 times on Tuesday.
- GBLBS is issuing 50% right shares to its shareholders from 27th Baisakh, 2076. Investors holding shares till 28th Chaitra, 2075 are eligible for the right issue.
- Ganapati Microfinance reports Rs. 2.23 cores profit for the 3rd quarter of FY75/76. The IPO issue of the company is open.
- LBBL has published its financial report for 3rd Quarter 75/76. The net profit of the company has increased by 86.26% on a y-o-y basis. EPS and BVPS stands at Rs. 20.73 and Rs. 166.32 respectively.
- SEBON has given instruction to the issue manager of Sanjen and Rasuwagadhi to extend the ongoing IPO issue of both companies by 2 days till Thursday.
- NICL has allotted the 65% right shares to the applicants. 96.32% of shares is subscribed.



Major Events (Today)

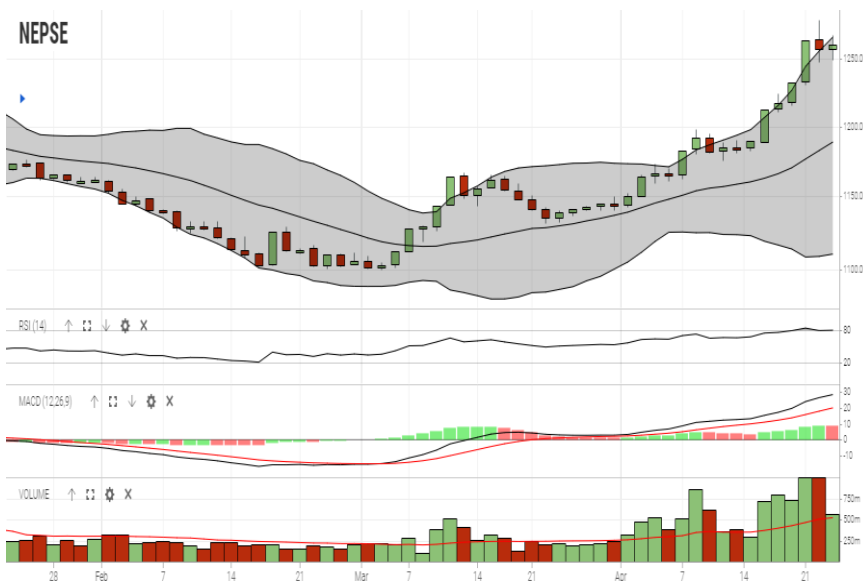
- Union Hydropower Company Limited is issuing 3,534,340 units IPO shares to general public.
- Nepal Agro Laghubitta Bittiya Sanstha Ltd is issuing 151,200 units IPO shares to public.
- Ganapati Microfinance Bittiya Sanstha Ltd is issuing 313,075 units IPO shares to general public.
- Sanjen and Rasuwagadhi is issuing 4,982,250 units and 9,339,469 units IPO shares to general public respectively.
- Issue open for 60% and 50% right shares of ALICL, and GLICL.

GLOBAL INDICES		
SENSEX	38,564.88	-80.30
NIFTY	11,575.95	-18.50
S&P 500	2,907.97	+2.94
DJIA	26,511.05	-48.49
NIKKEI 225	22,259.74	+41.84

	Scrip Name	Ticker	LTP
UNDER PRICED	Nepal Bank Ltd.	NBL	309.00
	Agriculture Development Bank Ltd.	ADBL	346.00
	Kumari Bank Ltd.	KBL	226.00
	Civil Bank Ltd.	CBL	157.00
	Nepal Credit and Commerce Ltd.	NCCB	230.00
FAIRLY PRICED	Century Commercial Bank Ltd	CCBL	170.00
	Janata Bank Nepal Ltd.	JBNL	193.00
	Bank of Kathmandu Ltd.	BOKL	281.00
	Mega Bank Nepal Ltd.	MEGA	182.00
	Prabhu Bank Limited	PRVU	278.00
OVER PRICED	Standard Chartered Bank Limited	SCB	727.00
	Nepal SBI Bank Limited	SBI	505.00
	Everest Bank Limited	EBL	671.00
	Himalayan Bank Limited	HBL	562.00
	NIC Asia Bank Limited	NICA	490.00

Notes: # Above pricing is performed by averaging the prices derived as per P/E, P/B and 180 days closing averages. Based on Published Q2 75/76 data.
Harmonic Mean of industries is carried for Pricings.

NEPSE TECHNICAL OUTLOOKS



Indicators used: Bollinger Bands, MACD, RSI, Moving Average (20 days) Volume

Date / Time	10.01.2076
Close	1,260.68
Open	1,256.64
High	1,268.32
Low	1,248.50
Turnover	614,147,411
Bollinger Bands Top Bollinger Bands (20,2,ma,y)	1,266.75
Bollinger Bands Median Bollinger Bands (20,2,ma,y)	1,188.58
Bollinger Bands Bottom Bollinger Bands (20,2,ma,y)	1,110.41
RSI (14)	80
MA (20, Volume, ma, 0)	524m
MACD (12,26,9)	29
Signal macd (12,26,9)	20
macd (12,26,9)_hist	8



Disclaimers: This MARKET SUMM is prepared to timely update the market participants about the Nepalese stock market before the Market opens for the day. The information and data herein should not be construed as an investment advice or recommendation. Should the investors choose to act based on this report, it shall be entirely at their own risk and KCL Astute shall not be liable, for any loss or damages incurred thereby. Unless otherwise specifically stated, the above data concerns the previous trading day.

KCL Astute Capital Limited

Address: Sundar Bhawan, Hattisar, Kathmandu

Contact No. 977-1-4429149 | 4429150, Email: info@kclastute.com