



NEPSE Index - Wednesday



MARKET SUMMARY

NEPSE	1,284.07	+0.54%
Total Turnover (Rs.)	443,481,391	+20.19%
Share Volume	1,346,330	-6.78%
Total Transactions	6,462	+17.47%
Total Market Cap. (Rs. Mill)	1,598,805.92	+0.54%
Floated Market Cap (Rs. Mill)	571,238.82	+0.51%

MARKET CAP TO GDP RATIO 53.16% ▲

WEIGHTAGE ON MARKET CAP

Commercial Banks	53.43%
Development Bank	5.15%
Finance	2.90%
Microfinance	6.11%
Life Insurance	7.29%
Non-life Insurance	5.61%
Hydropower	5.87%
Hotel	1.74%
Manufacturing And Processing	4.11%
Trading	0.09%
Others	7.69%
NTC	6.56%

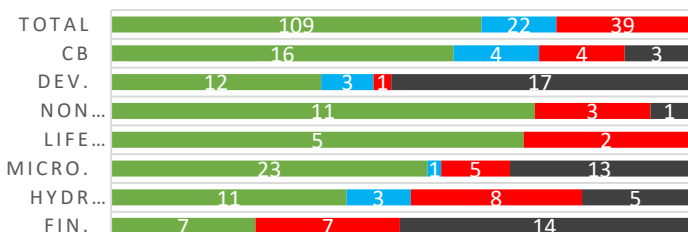
Top Gainers	GMFBS, MLBBL, DHPL
Top Losers	UNHPL, CEFL, PROFL
Top Stocks by Shares Traded	NBL, PRVU, CBL
Top Stocks by Transactions	ILBS, NBL, ADBL
Top Stocks by Turnover	NBL, ADBL, PRVU
Top Brokers by Turnover	49, 44, 34

NEPSE STATISTICS

Average Return	16.97%
Standard Deviation	17.00%
Skewness	0.46
Kurtosis	3.50

Notes: NEPSE Index from 2069.04.01 – 2076.04.08. Avg. annual trade day's 229. Lognormal return is used. Skewness shows market is asymmetrically skewed to right, indicating average return of 16.97% more affected by outliers. Further excess kurtosis shows fat tail and more peaked distribution than normal.

TRADED SCRIPTS STATS



Legend: Up (Green), No Change (Blue), Down (Red), No Trade (Black)

MAJOR MARKET NEWS

- NEPSE closed Green at 1284.07, gaining 6.90 points
- Sensitive Index gained 1.72 points
- NEPSE has listed 74,40,793.12 units (10.25%) Bonus Share of CBL (162).
- NEPSE has listed 1,39,345 units (29%) Bonus Share of KMFL (830)
- LGIL (445) to convene its 14th AGM on 29th Shrawan
- SICL (824) to convene its 14th AGM on 28th Shrawan; issue 30% Right Shares
- Trade price between 30th Shrawan 2064 to 31st Asadh 2076 to be used for determining Average Price for calculation of Capital Gain Tax.

Major Takeaway of Monetary Policy 2076/77

- NRB stepped back from its BFIs M&A approach including the Big Merger talk; Monetary Policy came with no mandatory norms but brings privileges for the BFIs opting M&A
- Commercial Bank mandatory to issue Debentures worth 25% of their paid up capital by Asadh end 2078.
- Borrowers to produce PAN for borrowing at or above Rs.50 lakhs.
- Basel II to be fully applicable to 'B' and 'C' Class BFIs;
- 'D' Class BFI to mandatorily disburse one third of its Total Loan in Agriculture sector

Major Events (Today)

- NFO Alert:** NIC ASIA Balance Fund worth Rs.1.25 billion (125 million units at Rs.10 each) open from today 8th Shrawan;
- IPO Alert:** 7,672,210 units IPO Issue of Himal Dolakha Hydropower Company Ltd.
- Debenture Alert:** '10.25% NIC ASIA Debenture 2083/84' worth Rs.4.4 billion. **Last day.**
- Debenture Alert:** '10.25% Machhapuchchhre Debenture 2085' worth Rs.3 billion. **Last day.**
- Debenture Alert:** '10% Himalayan Bank Ltd. Debenture 2083' worth Rs.3 billion
- Right Alert:** 100% Right Issue of WOMI opened

New Fund Offerings (Upcoming)

Schemes	Units	@ Rs.	Open
1 NMB 50	120 mil.	10	13/4/76
2 Siddhartha Investment Growth Scheme-2	140 mil.	10	23/4/76

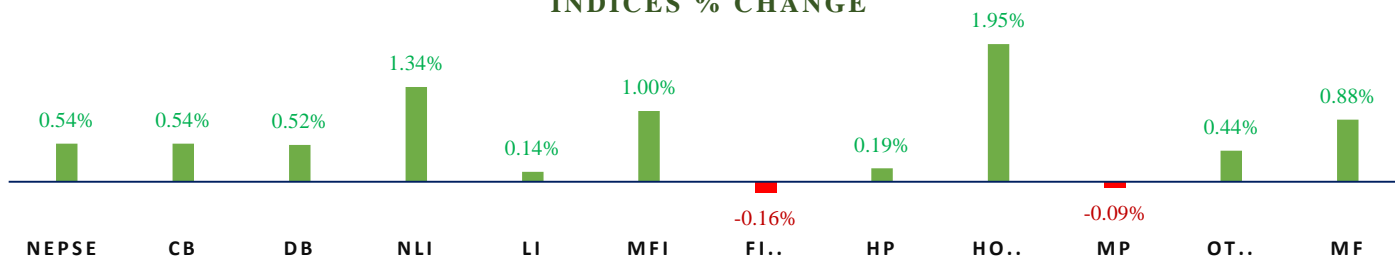
Fundamental Watch: Quarter 4 2075/76 Unaudited Reports



MARKET SUMM...

9th Asadh, 2076 Thursday

INDICES % CHANGE



Volatile Stock

GMFBS	(538)	8.69%
SLBSL	(602)	7.69%
NADEP	(454)	7.33%

Stock Movement

NAGRO	(540)	Highest till now
GMFBS	(538)	Highest till now
UNHPL	(94)	Lowest till now

Highest Ang. Volume Stocks in last 7 days

NBL	(349)	89,601.86 units
CBL	(162)	68,335.71 units
PRVU	(280)	42,956 units

Sectorial Outlooks

Bullish	Bearish
Development Bank	Hotels
Microfinance	Life Insurance

Stock Pick...

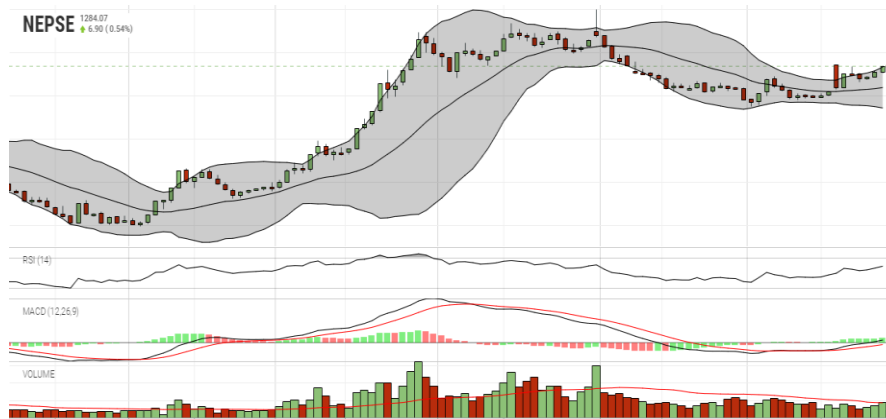
Up Pick	Down Pick
PRVU	NLIC
BPCL	OHL

Financial Metrics

S.N.	Ticker	LTP	EPS	BVPS	P/E	P/B	ROE	NPL	CAR	Remarks
1	MBL	276	21.15	139.57	13.05	1.98	15.77%	0.37%	12.88%	-
2	CZBIL	232	17.79	148.87	13.04	1.56	12.68%	1.19%	13.19%	To acquire SBBLJ
3	UFL	185	10.83	147.72	17.08	1.25	8.70%	0.65%	21.85%	-
4	NMFBS	1579	87.12	259.86	18.12	6.08	39.48%	1.43%	11.11%	-
5	FMDBL	397	19.46	133.81	20.40	2.97	15.69%	-	16.96%	-

Note: If asterisk sign (*) financial metrics denotes Quarter 3 75/76 data, otherwise financial metrics are of Quarter 4 75/76 data.

NEPSE TECHNICAL OUTLOOKS



Date / Time	08.04.2076
Close	1284.07
Open	1277.09
High	1284.99
Low	1276.07
Bollinger Bands Top (20,2,ma,y)	1283.09
Bollinger Bands Median (20,2,ma,y)	1259.46
Bollinger Bands Bottom (20,2,ma,y)	1235.83
RSI (14)	63
MA (35), Volume, ma, 0)	424m
MACD (12,26,9)	2
Signal macd (12,26,9)	-2
macd (12,26,9)_hist	4

Indicators used: Bollinger Bands, MACD, RSI, Moving Average (35 days) Volume

Major Indices	SENSEX	NIFTY	S&P 500	DJIA	NIKKEI 225
	37,847.65 (-0.36%)	11,271.30 (-0.53%)	3008.30 (+0.09%)	27,231.80 (-0.43%)	21709.57 (+0.41%)



Disclaimers: This MARKET SUMM is prepared to timely update the market participants about the Nepalese stock market before the Market opens for the day. The information and data herein should not be construed as an investment advice or recommendation. Should the investors choose to act based on this report, it shall be entirely at their own risk and KCL Astute shall not be liable, for any loss or damages incurred thereby. Unless otherwise specifically stated, the above data concerns the previous trading day.

KCL Astute Capital Limited

Address: Sundar Bhawan, Hattisar, Kathmandu

Contact No. 977-1-4429149 | 4429150,

Email: info@kclastute.com