



NEPSE Index – Tuesday



MARKET SUMMARY

NEPSE	1,134.56	-0.56%
Total Turnover (Rs.)	218,278,449	+23.13%
Share Volume	873,079	+17.46%
Total Transactions	3,975	-15.14%
Total Market Cap. (Rs. Mill)	1,441,364.76	-0.56%
Floated Market Cap (Rs. Mill)	521,392.74	-0.46%

MARKET CAP TO GDP RATIO 47.92% ▼

WEIGHTAGE ON MARKET CAP

Commercial Banks	53.43%
Development Bank	5.40%
Finance	2.95%
Microfinance	6.58%
Life Insurance	6.76%
Non-life Insurance	5.15%
Hydropower	6.31%
Hotel	1.71%
Manufacturing And Processing	4.12%
Trading	0.12%
Others	7.46%
NTC	6.47%

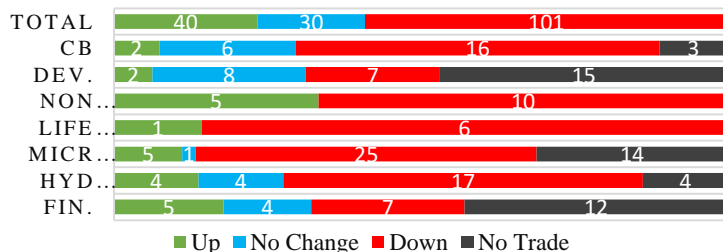
Top Gainers	KKHC, GGBSL, BBS
Top Losers	RRHP, KADBL, CLBSL
Top Stocks by Shares Traded	SBLPO, SANIMA, JBBLPO
Top Stocks by Transactions	RHPL, SJCL, SANIMA
Top Stocks by Turnover	SANIMA, SBLPO, SHIVM
Top Brokers by Transactions	32, 49, 35

NEPSE STATISTICS

Average Return	14.82%
Standard Deviation	16.92%
Skewness	0.48
Kurtosis	3.49

Notes: NEPSE Index from 2069.04.01 – 2076.06.07. Avg. annual trade day's 229. Lognormal return is used. Skewness shows market is asymmetrically skewed to right, indicating average return of 14.82% more affected by outliers. Further excess kurtosis shows fat tail and more peaked distribution than normal.

TRADED SCRIPTS STATS



MAJOR MARKET NEWS

- Market fell by 6.42 points on Tuesday; NEPSE Index closed at 1134.56 level.
- Sensitive, Float and Sensitive Float Index all closed Red falling by 1.4, 0.43 and 0.42 points respectively.
- All sub-indices closed red except Hotels, Trading and Mutual Funds which gained by 13.48, 3.63, and 0.03 points respectively.
- Tinanu Mission Development Bank Limited started to trade in Secondary Market with Ticker of TMDBL.
- Siddhartha Equity Fund (SEF) Bhadra end NAV fell down to Rs.9.68 from Rs.11.09; Reported Net Loss of Rs.6.86 crores till Bhadra.
- Siddhartha Investment Growth Scheme II (SIGS2) Bhadra end NAV stood Rs.9.84; Reported Net Loss of Rs.1.96 crores.
- NMB and ODBL to carry joint transaction from Ashoj 11, following the acquisition of latter by former.
- FMDBL to convene 10th AGM on 28th Ashoj; 17% Bonus shares.
- Shiva Shree Hydropower Limited received approval from SEBON to float 3,351,140 units of IPO.
- KKHC remained the top gainers for the day which gained by 8.16%, whereas RRHP remained top losers for the day which lost by 7.27%.

Today's Events (Wednesday)

- NFO Alert:** Issue opens of "Sunrise First Mutual Fund" - 100,000,000 units at Rs.10 each.
- 13th AGM of NLG
- Right Shares Alert:** MNBBL is issuing 20% Right
- Right Shares Alert:** SLICL is issuing 70% Right
- Right Shares Alert:** UIC is issuing 240% Right. *Extended*
- Auction Alert:** GBLBS is auctioning its 299,982 units promoter shares via auction till 4th Kartik.
- Auction Alert:** WOMI is auctioning its 46,509 units Ordinary Shares and 76,704 units Promoter shares

Debenture Offering (Upcoming)

	Schemes	Units	@ Rs.
1	10% Laxmi Bank Debenture	2,000,000	1000
			2086

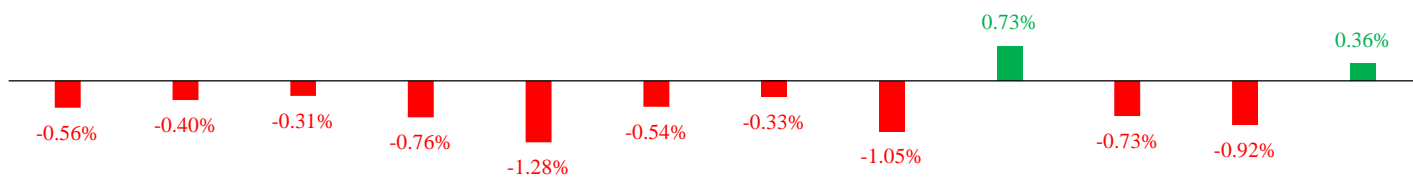


MARKET SUMM...



8th Ashwin, 2076 Wednesday

INDICES % CHANGE



NEPSE	CB	DB	NLI	LI	MFI	FI..	HP	HO..	MP	OT..	MF
-------	----	----	-----	----	-----	------	----	------	----	------	----

Volatile Stocks

HURJA	(106)	6.86%
KKHC	(53)	6.00%
RRHP	(102)	5.88%

Stock Movement

KPCL	(76)	Lowest till now
CCBLPO	(124)	Lowest till now
SHPC	(185)	Lowest till now

Highest Volume – Day 2 (Week 11)

SBLPO	(196)	159,637 units
GDBLPO	(122)	135,759 units
SANIMA	(348)	116,376 units

Sectorial Outlooks

Bullish

-
-

Bearish

Microfinance
Banking

Stock Pick...

Up Pick

CEFL
UMB

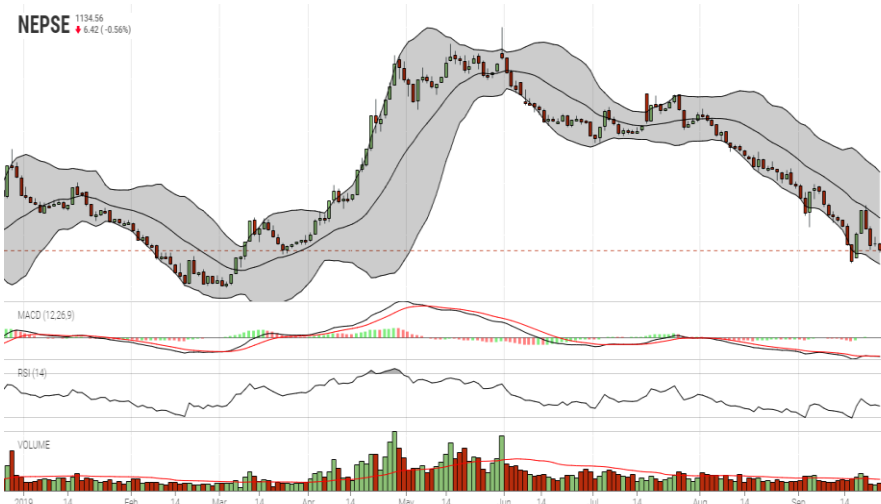
Down Pick

EIC
SMATA

Financial Metrics

S.N.	Ticker	LTP	EPS	BVPS	P/E	P/B	ROE	NPL	CAR	Remarks
1	SHIVM	547	34.16	194.6	16.01	2.81	20.29%	-	-	-
2	LLBS	653	45.84	201.11	14.25	3.25	25.61%	1.26%	13.31%	-
2	JSLBB	999	73.73	327.01	13.55	3.05	26.99%	2.23%	8.37%	-
3	NIL	356	29.22	195.90	12.18	1.82	16.12%	-	-	-
5	SABSL	451	27.87	128.75	16.18	3.58	27.75%	0.45%	9.76%	13% Bonus Proposal

NEPSE TECHNICAL OUTLOOKS



Date / Time	24.06.2076
Close	1134.56
Open	1141.00
High	1141.62
Low	1132.72
Bollinger Bands Top (20,2,ma,y)	1210.24
Bollinger Bands Median (20,2,ma,y)	1165.96
Bollinger Bands Bottom (20,2,ma,y)	1121.68
RSI (14)	35
MA (35, Volume, ma, 0)	308M
MACD (12,26,9)	-20
Signal macd (12,26,9)	-20
macd (12,26,9)_hist	-0

Indicators used: Bollinger Bands, MACD, RSI, Moving Average (35 days) Price

Global Indices	SENSEX 39,087.20 (-0.03%)	NIFTY 11,564.85 (-0.20%)	S&P 500 2,966.61 (-0.84%)	DJIA 26,807.77 (-0.53%)	NIKKEI 225 21,991.50 (-0.49%)
-----------------------	-------------------------------------	------------------------------------	---	-----------------------------------	---



Disclaimers: This MARKET SUMM is prepared to timely update the market participants about the Nepalese stock market before the Market opens for the day. The information and data herein should not be construed as an investment advice or recommendation. Should the investors choose to act based on this report, it shall be entirely at their own risk and KCL Astute shall not be liable, for any loss or damages incurred thereby. Unless otherwise specifically stated, the above data concerns the previous trading day.

KCL Astute Capital Limited

Address: Sundar Bhawan, Hattisar, Kathmandu

Contact No. 977-1-4429149 | 4429150

Email: info@kclastute.com

KCL ASTUTE CAPITAL RESEARCH TEAM