



MARKET SUMMARY		
NEPSE	1,279.29	+1.47%
Total Turnover (Rs.)	95,030,4410	+54.74%
Share Volume	3,408,374	+89.19%
Total Transactions	9,609	+44.28%
Total Market Cap. (Rs. Mill)	1,585,155.27	+1.52%
Floated Market Cap (Rs. Mill)	559,302.03	+1.80%

MARKET CAP TO GDP RATIO	52.70%	▲
-------------------------	--------	---

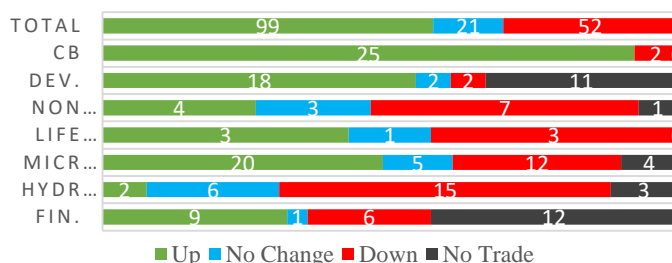
WEIGHTAGE ON MARKET CAP	
Commercial Banks	55.04%
Development Bank	4.94%
Finance	2.97%
Microfinance	5.89%
Life Insurance	7.53%
Non-life Insurance	6.09%
Hydropower	5.18%
Hotel	1.54%
Manufacturing And Processing	3.18%
Trading	0.10%
Others	7.55%
NTC	6.59%

Top Gainers	EIC, SLBSL, SBBLJ
Top Losers	RADHI, CLBSL, NCDB
Top Stocks by Shares Traded	JBNL, NBL, GBIME
Top Stocks by Transactions	GBIME, JBNL, PRVU
Top Stocks by Turnover	NBL, GBIME, NICA
Top Brokers by Turnover	58, 49, 4

NEPSE STATISTICS	
Average Return	17.62%
Standard Deviation	17.22%
Standard Error	1.14%
Skewness	0.45
Kurtosis	3.39

Notes: NEPSE Index from 2069.04.01 – 2076.01.11. Avg. annual trade day's 229. Lognormal return is used. Skewness shows market is asymmetrically skewed to right, indicating average return of 17.62% more affected by outliers. Further excess kurtosis shows fat tail and more peaked distribution than normal.

TRADED SCRIPTS STATS



MARKET OVERVIEW

NEPSE reported a significant gain in its index by gaining 19.14 points to close at 1279.29 on Wednesday. The highest index reached throughout the day was 1280.84 while the lowest index reached was 1261.69. Turnover, share volume and total transactions all increased by 54.74%, 89.19% and 44.28% respectively. The trade of 172 scripts resulted in a total turnover of Rs. 95.03 crores. Sensitive, Float and Sensitive Float reported a gain of 4.8, 1.67 and 1.76 points respectively.

Most of the sectors reported increase in its sub-indices. Sectors that reported the most losses at the end of the trading day were Hydropower and Manu & Pro. that lost by 10.68 and 2.69 points respectively. However, Sectors to gain the most at the end of the trading day were Hotels followed by Development Banks and Banking which reported gain of 60.11, 39.34 and 27.2 points respectively.

CLBSL, SMB and MHNL underperformed the most as compared to its sector performance while EIC, GBIME and JBNL outperformed its respective sectors. GBIME, EIC, and SINDU are the most volatile stock that traded throughout the day. BARUN, UPCL and MHNL are trading closer to 52 weeks low while NIB, NIBPO and NICA are trading near to 52 weeks high.

EIC hit positive circuit by gaining 9.77% at the end of the trading day. Whereas, RADHI is the top loser that lost by 4.94%.

MAJOR MARKET NEWS

- Last day to apply for IPO of Union Hydropower Company Limited. .
- GBIME and NIB urges shareholders to dematerialize their shares to receive the dividend.
- PURBL has published its financial report for 3rd Quarter 75/76. The net profit of the company has decreased by 3.08% on a y-o-y basis. EPS and BVPS stands at Rs. 13.73 and Rs. 126.76 respectively.
- SHINE has published its financial report for 3rd Quarter 75/76. The net profit of the company has increased by 31.07% on a y-o-y basis. EPS and BVPS stands at Rs. 25.55 and Rs. 139.59 respectively.
- NRB is issuing Repo worth Rs. 1500 crores with maturity of 7 days on 18th Baisakh, 2076. The security matures on 18th Baisakh, 2076.



Major Events (Today)

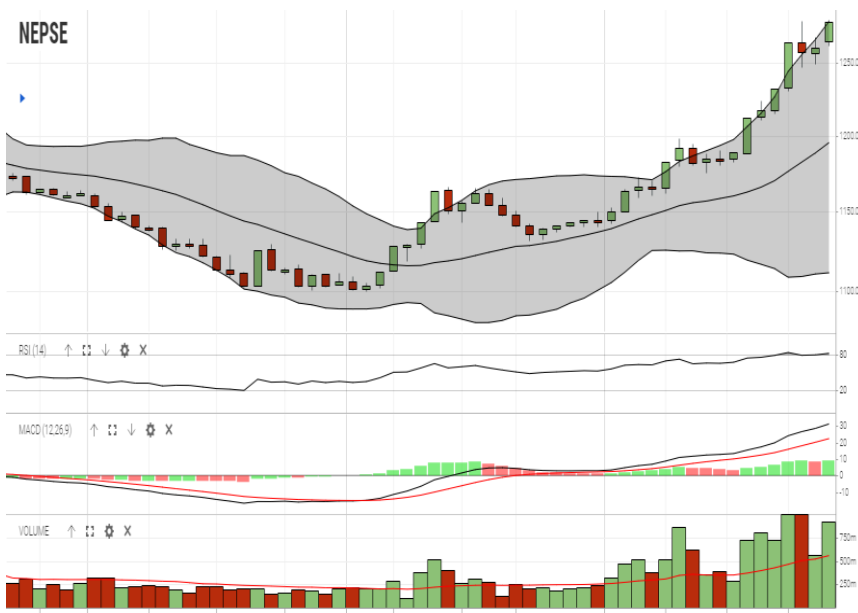
- Union Hydropower Company Limited is issuing 3,534,340 units IPO shares to general public.
- Ganapati Microfinance Bittiya Sanstha Ltd is issuing 313,075 units IPO shares to general public.
- Sanjen and Rasuwagadhi is issuing 4,982,250 units and 9,339,469 units IPO shares to general public respectively.
- Issue open for 60% and 50% right shares of ALICL, and GLICL.

GLOBAL INDICES		
SENSEX	39,054.68	+489.80
NIFTY	11,726.15	+150.20
S&P 500	2,933.68	+25.71
DJIA	26,656.39	+145.34
NIKKEI 225	22,182.90	-76.84

	Scrip Name	Ticker	LTP
UNDER PRICED	Nepal Bank Ltd.	NBL	312.00
	Agriculture Development Bank Ltd.	ADBL	354.00
	Kumari Bank Ltd.	KBL	235.00
	Civil Bank Ltd.	CBL	162.00
	Nepal Credit and Commerce Ltd.	NCCB	239.00
FAIRLY PRICED	Century Commercial Bank Ltd	CCBL	179.00
	Janata Bank Nepal Ltd.	JBNL	202.00
	Bank of Kathmandu Ltd.	BOKL	292.00
	Citizen Bank International Ltd.	CZBIL	235.00
	Mega Bank Nepal Ltd.	MEGA	193.00
OVER PRICED	Standard Chartered Bank Limited	SCB	722.00
	Nepal SBI Bank Limited	SBI	518.00
	Everest Bank Limited	EBL	679.00
	Himalayan Bank Limited	HBL	569.00
	NIC Asia Bank Limited	NICA	506.00

Notes: # Above pricing is performed by averaging the prices derived as per P/E, P/B and 180 days closing averages. Based on Published Q2 75/76 data.
Harmonic Mean of industries is carried for Pricings.

NEPSE TECHNICAL OUTLOOKS



Date / Time	11.01.2076
Close	1,279.29
Open	1,265.11
High	1,280.84
Low	1,261.69
Turnover	95,030,4410
Bollinger Bands Top Bollinger Bands (20,2,ma,y)	1,279.80
Bollinger Bands Median Bollinger Bands (20,2,ma,y)	1,195.51
Bollinger Bands Bottom Bollinger Bands (20,2,ma,y)	1,111.21
RSI (14)	83
MA (20, Volume, ma, 0)	560m
MACD (12,26,9)	31
Signal macd (12,26,9)	22
macd (12,26,9)_hist	9

Indicators used: Bollinger Bands, MACD, RSI, Moving Average (20 days) Volume



Disclaimers: This MARKET SUMM is prepared to timely update the market participants about the Nepalese stock market before the Market opens for the day. The information and data herein should not be construed as an investment advice or recommendation. Should the investors choose to act based on this report, it shall be entirely at their own risk and KCL Astute shall not be liable, for any loss or damages incurred thereby. Unless otherwise specifically stated, the above data concerns the previous trading day.

KCL Astute Capital Limited

Address: Sundar Bhawan, Hattisar, Kathmandu

Contact No. 977-1-4429149 | 4429150, [Email: info@kclastute.com](mailto:info@kclastute.com)