



10th Bhadra, 2076 Tuesday

Market Summ... concerning previous day's trading Monday"

NEPSE Index – Monday



MARKET SUMMARY

NEPSE	1,203.13	-0.54%
Total Turnover (Rs.)	380,596,571	8.66%
Share Volume	1,603,326	25.69%
Total Transactions	6,540	-1.37%
Total Market Cap. (Rs. Mill)	1,527,717.1	-0.54%
Floated Market Cap (Rs.Mill)	548,978.35	-0.49%

MARKET CAP TO GDP RATIO **50.79%** ▼

WEIGHTAGE ON MARKET CAP

Commercial Banks	52.67%
Development Bank	5.28%
Finance	2.93%
Microfinance	6.43%
Life Insurance	7.14%
Non-life Insurance	5.37%
Hydropower	6.61%
Hotel	1.74%
Manufacturing And Processing	4.08%
Trading	0.11%
Others	7.64%
NTC	6.58%

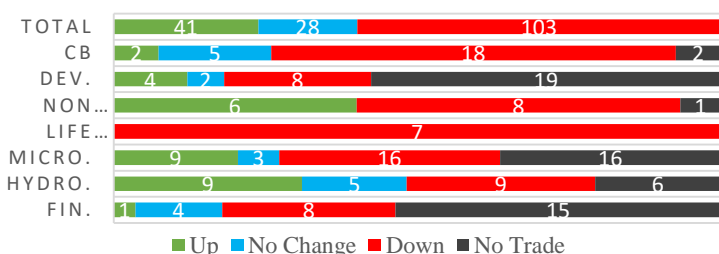
Top Gainers	STC, MERO, AKBSL
Top Losers	NLG, AKJCL, NIBLPF
Top Stocks by Shares Traded	PRVUPO, NBL, RHPL
Top Stocks by Transactions	RHPL, SJCL, UPPER
Top Stocks by Turnover	PRVUPO, NABIL, NBL
Top Brokers by Transactions	33, 34, 49

NEPSE STATISTICS

Average Return	15.82%
Standard Deviation	16.91%
Skewness	0.47
Kurtosis	3.55

Notes: NEPSE Index from 2069.04.01 – 2076.05.09. Avg. annual trade day's 229. Lognormal return is used. Skewness shows market is asymmetrically skewed to right, indicating average return of 15.82% more affected by outliers. Further excess kurtosis shows fat tail and more peaked distribution than normal.

TRADED SCRIPTS STATS



MAJOR MARKET NEWS

- 📌 Market closed the day with loss of 6.49 points on Monday; NEPSE Index closed at 1203.13 level.
- 📌 Sensitive, Float and Sensitive Float Index lost by 1.07, 0.44 and 0.27 points respectively.
- 📌 All Sub-Indices closed Red on the day; Life-Insurance lost the most.
- 📌 CZBIL proposed 12% Cash and 3% Bonus Dividend for the FY 2075/76.
- 📌 MERO proposed 30% Bonus shares and 1.58% cash dividend (for tax purpose) for the FY 2075/76.
- 📌 NEPSE has listed 49,05,600 units (84%) Bonus Share of PIC.
- 📌 Adhikhola Laghubitta Bittiya Sanstha Limited (AKBSL) began its trade in secondary market.
- 📌 SLBS proposed 44.4778% Bonus and 2.3409% cash dividend for tax purpose for the FY 2075/76.
- 📌 ICFC Finance Ltd. to issue 2 lakhs units of 12% 7 year Debenture.
- 📌 SFFIL to close book for 60% Right Shares on 20th Bhadra.
- 📌 Supreme Court favoured Ncell, giving verdict that the telecom company not requiring to pay capital gain tax amounting approx. Rs.39 billion as demanded by the Inland Revenue Department.
- 📌 Gold (hallmark) price trading at record high of Rs.73,500 per tola.
- 📌 KCL Astute Capital Ltd., a Merchant Bank, has been issued the license of Depository Participants; Now permitted to provide Demat services to the customers.

Today's Events

- 📌 **NFO Alert:** NMB 50 worth Rs.1.20 billion (120 million units at Rs.10 each). *004Cast day*
- 📌 **NFO Alert:** SIGS2 worth Rs.1.40 billion (140 million units at Rs.10 each). *Issue date Extended*
- 📌 **Auction Alert:** CBL is selling its 1,282,881 units promoter shares via auction. Issue open till 16th Bhadra
- 📌 **Right Shares Alert:** SLICL is issuing 70% right shares to its shareholders. Issue open till 12th Ashwin.
- 📌 **Debentures Alert:** SBL is issuing 10.25% 25 lakh units debentures. Issue open till 9th Bhadra.
- 📌 **Right Shares Alert:** GILB is issuing 100% right shares to its shareholders. Issue open till 23rd Bhadra.
- 📌 **Right Shares Alert:** WOMI is issuing 100% right shares to its shareholders. Issue open till 11th Bhadra.
- 📌 **Right Shares Alert:** MPFL is issuing 865% right shares to its shareholders. Issue open till 9th Bhadra.
- 📌 **Right Shares Alert:** UIC is issuing 240% right shares to its shareholders from today. Issue open till 6th Ashwin.

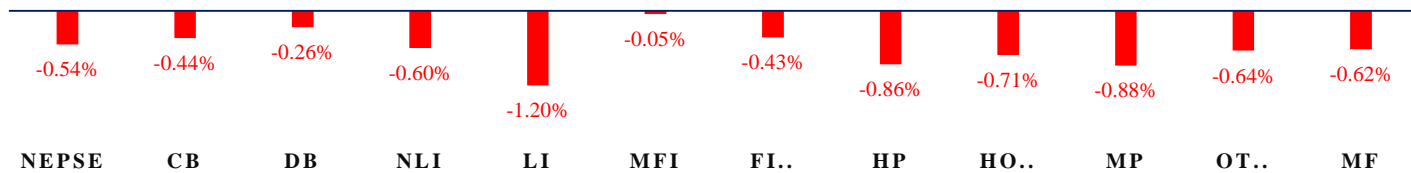


MARKET SUMM...



10th Bhadra, 2076 Tuesday

INDICES % CHANGE



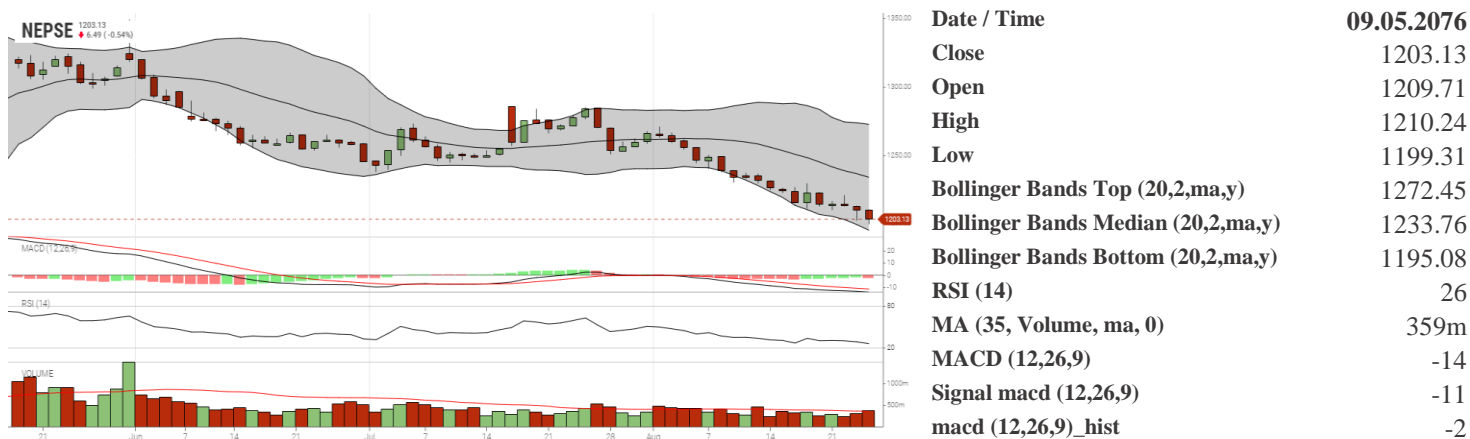
Volatile Stocks			Stock Movement			Highest Volume – Day 2 (Week 7)	
SLBSL	(749)	5.61%	STC	(603)	Highest till now	PRVUPO	(8.82) 1,240,288 units
NADEP	(474)	5.38%	KKHC	(57)	Lowest till now	NBL	(322) 103,818 units
UNHPL	(60)	5.17%	UNHPL	(60)	Lowest till now	RHPL	(481) 90,460 units

Sectorial Outlooks		Stock Pick...	
Bullish	Bearish	Up Pick	Down Pick
-	Banking	CLBSL	IGI
-	Non-Life Insurance	SLBSL	SIC

Financial Metrics										
S.N.	Ticker	LTP	EPS	BVPS	P/E	P/B	ROE	NPL	CAR	Remarks
1	SICL	769	44.73	250.17	17.19	3.07	19.64%	-	-	-
1	SIC	585	27.62	191.17	21.18	3.06	15.57%	-	-	-
2	JSLBB	970	73.73	327.01	13.16	2.97	26.99%	2.23%	8.37%	-
3	NIL	395	29.22	195.90	13.52	2.02	16.12%	-	-	-
5	BFC	92	9.92	87.53	9.27	1.05	17.56%	18.46%	17.17%	-

Note: If asterisk sign (*) financial metrics denotes Quarter 3 75/76 data, otherwise financial metrics are of Quarter 4 75/76 data.

NEPSE TECHNICAL OUTLOOKS



Indicators used: Bollinger Bands, MACD, RSI, Moving Average (35 days) Volume

Global Indices	SENSEX	NIFTY	S&P 500	DJIA	NIKKEI 225
	37,651.99 (+0.42%)	11,106.55 (+0.44%)	2,878.38 (+1.10%)	25,898.33 (+1.05%)	20,517.00 (+1.26%)



Disclaimers: This MARKET SUMM is prepared to timely update the market participants about the Nepalese stock market before the Market opens for the day. The information and data herein should not be construed as an investment advice or recommendation. Should the investors choose to act based on this report, it shall be entirely at their own risk and KCL Astute shall not be liable, for any loss or damages incurred thereby. Unless otherwise specifically stated, the above data concerns the previous trading day.

KCL Astute Capital Limited

Address: Sundar Bhawan, Hattisar, Kathmandu

Contact No. 977-1-4429149 | 4429150

Email: info@kclastute.com

KCL ASTUTE CAPITAL RESEARCH TEAM