



MARKET SUMMARY		
NEPSE	1140.72	+0.18%
Total Turnover (Rs.)	215,121,580	-11.37%
Share Volume	882,885	-5.00%
Total Transactions	4,613	-12.20%
Total Market Cap. (Rs. Mill)	1,394,160.50	+0.18%
Floated Market Cap (Rs. Mill)	489,084.63	+0.15%

MARKET CAP TO GDP RATIO	46.35%	▲
-------------------------	--------	---

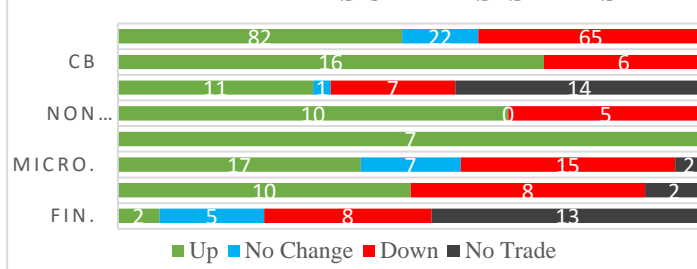
WEIGHTAGE ON MARKET CAP	
Commercial Banks	51.24%
Development Bank	5.15%
Finance	3.41%
Microfinance	6.12%
Life Insurance	7.92%
Non-life Insurance	6.55%
Hydropower	6.05%
Hotel	1.61%
Manufacturing And Processing	3.59%
Trading	0.11%
Others	8.25%
NTC	7.23%

Top Gainers	NSEWA, NMBHF1, PFL
Top Losers	UPCL, SHIVM, MLBBL
Top Stocks by Shares Traded	NBBPO, UPPER, NMB
Top Stocks by Transactions	UPPER, ALBSL, NMB
Top Stocks by Turnover	NBBPO, NMB, UPPER
Top Brokers by Turnover	25, 38, 44

NEPSE STATISTICS	
Average Return	16.15%
Standard Deviation	17.25%
Standard Error	1.14%
Skewness	0.46
Kurtosis	3.42

Notes: NEPSE Index from 2069.04.01 – 2075.12.12. Avg. annual trade day's 229. Lognormal return is used. Skewness shows market is asymmetrically skewed to right, indicating average return of 16.15% more affected by outliers. Further excess kurtosis shows fat tail and more peaked distribution than normal.

TRADED SCRIPTS STATS



MARKET OVERVIEW

NEPSE followed Monday's candle with a green candle at the end of Tuesday's trade. Market reported a slight gain of 2.07 points closing at 1140.72 on Tuesday. The highest index reached throughout the day was 1141.19 while the lowest index reached was 1136.20. Turnover, share volume and total transactions all decreased by 11.37%, 5% and 12.20% respectively. The trade of 171 scripts resulted in a total turnover of Rs. 21.51 crores. Sensitive, Float and Sensitive Float also reported a marginal gain of 0.42, 0.13 and 0.12 points respectively.

All sector closed green at the end of the day except Microfinance which reported a loss of 5.12 points in its index. However, Non-Life Insurance, Manu & Pro. and Others were the top gainers which reported gain of 24.19, 11.06 and 5.42 points in its index respectively. Similarly, Banking and Life Insurance gained by 1.16 and 0.58 points respectively at the end of the day.

SLBSL, SMB, and UFL underperformed the most as compared to its sector performance NSEWA, SIFC and PFL outperformed its respective sectors. NSEWA, SMB and SHIVM are the most volatile stock traded throughout the day. MLBBL, JSLBB and SLBBL are trading closer to 52 weeks low while PRVU, GBIMEP and ALBSL are trading near 52 weeks high.

UPCL and SHIVM hit negative circuit losing by 9.88% and 9.81% respectively at the end of the trading day.

MAJOR MARKET NEWS

- The members of investor's pressure group were arrested outside the NEPSE premises.
- In order to maintain the promoter public ratio at 55:45, more than 13.44 lakhs units of promoter shares of JBBL is converted to public shares.
- SKDBL and KEBL are calling SGM on 27th Chaitra, 2075. The major agenda of the SGM is to discuss various aspects of the merger.
- PROFL will be reselling remaining 667,305 units of ordinary shares via auction.
- NAV of NMBSF1 and NMBHF1 increased to Rs. 11.31 and to Rs.10.70 respectively for the month of Falgun.
- NAV of SEOS and SEF increased to Rs. 10.68 and to Rs.10.73 respectively for the month of Falgun.
- The unsold right shares of IGI has been allotted.



📌 Himalaya Urja Bikas Company Limited is issuing 1,485,000 units IPO shares to general public from 20th Chaitra, 2075.

Major Events (Today)

- 📌 Union Hydropower Company Limited is issuing 3,534,340 units IPO shares to general public.
- 📌 Jebils Finance calls to place the bids for 340,955.50 units of promoter shares. The auction will close today.
- 📌 Sanima Bank Limited calls to place the bids for 2,718,835 units of promoter shares.
- 📌 Right Share Issue open for 20%, 100% and 65% of UMB, MERO, and NICL respectively.

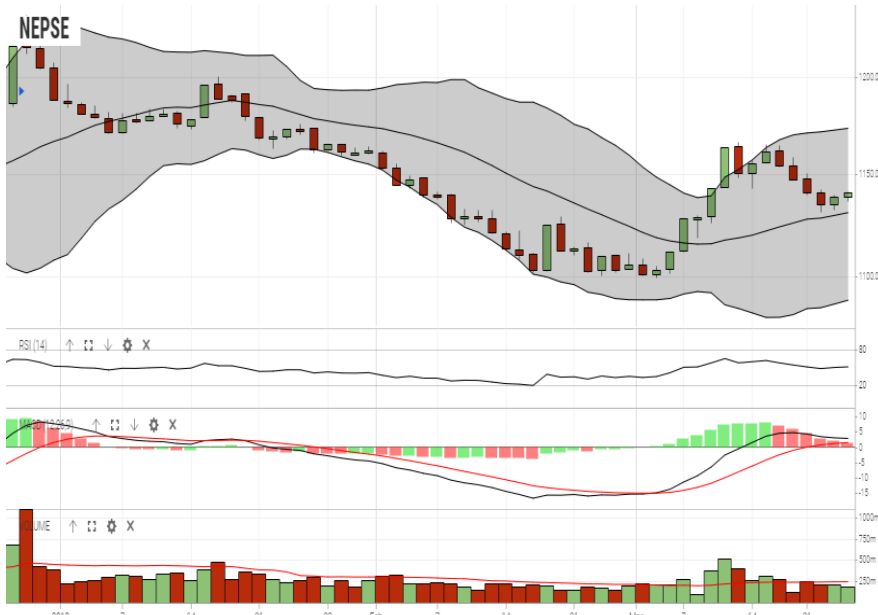
	Scrip Name	Ticker	LTP
UNDER PRICED	Agriculture Development Bank Ltd.	ADBL	294.00
	Nepal Bank Ltd.	NBL	290.00
	Bank of Kathmandu Ltd.	BOKL	243.00
	Laxmi Bank Limited	LBL	191.00
	Prabhu Bank Limited	PRVU	233.00
FAIRLY PRICED	Sunrise Bank Limited	SRBL	216.00
	Global IME Bank Limited	GBIME	261.00
	Citizen Bank International Ltd.	CZBIL	209.00
	Kumari Bank Limited	KBL	235.00
	Civil Bank Limited	CBL	155.00
OVER PRICED	Standard Chartered Bank Limited	SCB	564.00
	Everest Bank Limited	EBL	555.00
	Nepal SBI Bank Limited	SBI	391.00
	Nepal Investment Bank Ltd.	NIB	527.00
	Himalayan Bank Limited	HBL	461.00

Notes: # Above pricing is performed by averaging the prices derived as per P/E, P/B and 180 days closing averages. Based on Published Q2 75/76 data.

Harmonic Mean of industries is carried for Pricings.

GLOBAL INDICES		
SENSEX	38,406.86	+173.45
NIFTY	11,526.50	+43.25
S&P 500	2,818.46	+20.10
DJIA	25,657.73	+140.90
NIKKEI 225	21,307.50	-120.89

NEPSE TECHNICAL OUTLOOKS



Indicators used: Bollinger Bands, MACD, RSI, Moving Average (20 days) Volume

Date / Time	12.12.2075
Close	1,140.72
Open	1,138.41
High	1,141.19
Low	1,136.20
Turnover	215,121,580
Bollinger Bands Top Bollinger Bands (20,2,ma,y)	1,173.40
Bollinger Bands Median Bollinger Bands (20,2,ma,y)	1,131.04
Bollinger Bands Bottom Bollinger Bands (20,2,ma,y)	1,088.68
RSI (14)	52
MA (20, Volume, ma, 0)	247m
MACD (12,26,9)	3
Signal macd (12,26,9)	2
macd (12,26,9)_hist	1



Disclaimers: This MARKET SUMM is prepared to timely update the market participants about the Nepalese stock market before the Market opens for the day. The information and data herein should not be construed as an investment advice or recommendation. Should the investors choose to act based on this report, it shall be entirely at their own risk and KCL Astute shall not be liable, for any loss or damages incurred thereby. Unless otherwise specifically stated, the above data concerns the previous trading day.

KCL Astute Capital Limited

Address: Sundar Bhawan, Hattisar, Kathmandu

Contact No. 977-1-4429149 | 4429150, Email: info@kclastute.com