



MARKET SUMMARY		
NEPSE	1,302.96	+0.03%
Total Turnover (Rs.)	519,556,793	-17.03%
Share Volume	1,701,064	-17.19%
Total Transactions	6,618	-28.79%
Total Market Cap. (Rs. Mill)	1,617,725.58	+0.03%
Floated Market Cap (Rs.Mill)	565,965.52	+0.01%

MARKET CAP TO GDP RATIO	53.79%	▲
-------------------------	--------	---

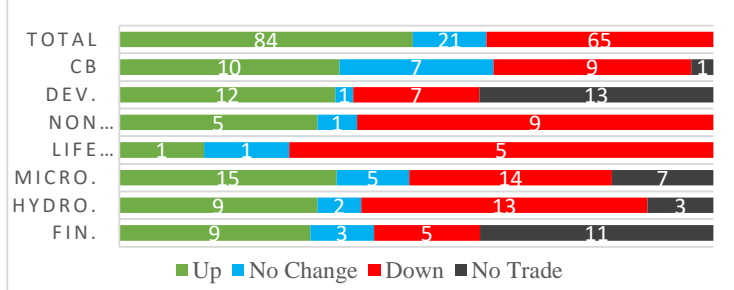
WEIGHTAGE ON MARKET CAP	
Commercial Banks	52.52%
Development Bank	4.98%
Finance	3.01%
Microfinance	5.87%
Life Insurance	7.89%
Non-life Insurance	6.11%
Hydropower	5.91%
Hotel	1.74%
Manufacturing And Processing	3.98%
Trading	0.09%
Others	7.89%
NTC	6.75%

Top Gainers	SPARS, KRBL, GUFL
Top Losers	SPDL, CHL, AKJCL
Top Stocks by Shares Traded	PRVU, SHIVM, NBL
Top Stocks by Transactions	SHIVM, UPPER, HURJA
Top Stocks by Turnover	SHIVM, PRVU, NBL
Top Brokers by Turnover	45, 34, 42

NEPSE STATISTICS	
Average Return	17.61%
Standard Deviation	17.16%
Standard Error	1.13%
Skewness	0.45
Kurtosis	3.41

Notes: NEPSE Index from 2069.04.01 – 2076.02.13. Avg. annual trade day's 229. Lognormal return is used. Skewness shows market is asymmetrically skewed to right, indicating average return of 17.61% more affected by outliers. Further excess kurtosis shows fat tail and more peaked distribution than normal.

### TRADED SCRIPTS STATS



### MARKET OVERVIEW

NEPSE reported a meagre gain of 0.34 points in its index points on Monday closing at 1302.96 level. Throughout the day, market peaked at 1309.90 level and made a low of 1298.36 level. Other indicators like Turnover, share volume and transactions also dropped by 17.03%, 17.19% and 28.79% respectively. A total trade of 170 scripts resulted in a total turnover of Rs. 51.96 crores. Sensitive, Float and Sensitive Float reported marginal gain of 0.05, 0.01 and 0.1 points respectively.

Most of the indicators closed green at the end of the day except Life Insurance, Non-Life Insurance and Banking which reported a loss of 28.62, 15.89 and 0.96 points respectively. Sectors like Manu & Pro followed by Hydropower and Development Bank posted the most gain of 37.66, 2.88 and 1.81 points respectively. Likewise, Microfinance gained by 0.81 points at the end of the day.

SPDL, SEF and CHL underperformed the most as compared to its sector performance while SPARS, KRBL and GUFL outperformed its respective sectors. AKPL, KRBL and SINDU were the most volatile stocks. MSLB, VLBS and NIBLPF traded closer to 52 weeks low while KADBL, KNBL and GILB traded near to 52 weeks high.

SPARS hit the positive circuit, gaining 9.83%. While SPDL was the top loser at the end of day which lost by 8%.

### MAJOR MARKET NEWS

- NEPSE lists IPO shares worth Rs. 7.75 crores of Gurans Laghubitta Bittiya Sanstha Limited for trading.
- The swap ratio for the merger of Nepal Investment Bank Limited and Jebils Finance Limited is set at 100:33.
- Laxmi Value Fund-1 (LVF-1) Baishakh end NAV increased by 5.36% to Rs.11.79 from Rs.11.19.
- NMB Sulav Investment Fund-1 (NMBSF-1) Baishakh end NAV increased by 4.77% to Rs.12.08 from Rs.11.53.
- NRB is auctioning Rs. 11 arba worth of T-Bill with different maturity periods.
- PMHPL has published its financial report for 3rd Quarter 75/76. The company has reported the net loss of Rs. 3.96 crores. BVPS stands at Rs. 88.67.
- Global IME Samunnat Scheme-1 (GIMES1) Baishakh end NAV increased by 8.32% to Rs.9.50 from Rs.8.77.



📌 NMB Hybrid Fund L-1 (NMBHF-1) Baishakh end NAV increased by 2.49% to Rs.11.09 from Rs.10.82.

### Major Events (Today)

📌 **NFO Alert:** Citizens Mutual Fund-2 (CMF II), 7-years closed end fund worth Rs.1 billion (100 million units at Rs.10) undersubscribed; application for approx Rs. 21.10 crores received till the last day (13<sup>th</sup> Jestha); issue is extended till 8<sup>th</sup> Asadh, 2076.

📌 “10.25% NBBL Debenture 2085”

**IPO Alert:** *Infinity Laghubitta Bittiya Sanstha Ltd.* (674,000 units) 13<sup>th</sup> – 16<sup>th</sup> Jestha 2076

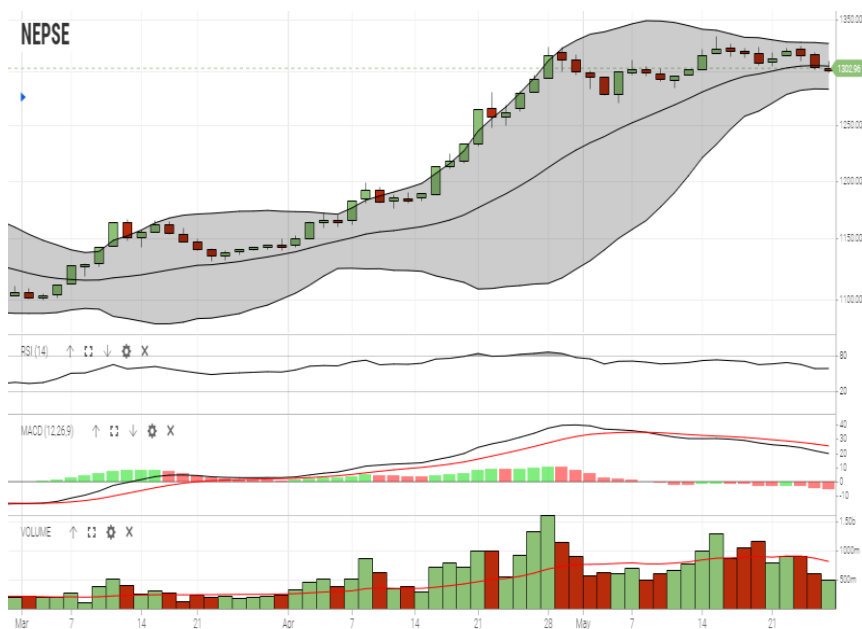
GLOBAL INDICES		
SENSEX	39,683.29	+248.57
NIFTY	11,924.75	+80.65
S&P 500	2,826.06	+3.82
DJIA	25,585.69	+95.22
NIKKEI 225	21,182.58	+65.36

	Scrip Name	Ticker	LTP
UNDER PRICED	Kumari Bank Ltd.	KBL	217.00
	Nepal Bank Ltd.	NBL	336.00
	Civil Bank Ltd.	CBL	147.00
	Prime Commercial Bank Ltd.	PCBL	310.00
	Century Commercial Bank Limited	CCBL	165.00
FAIRLY PRICED	Global IME Bank Limited	GBIME	307.00
	Sunrise Bank Limited	SRBL	254.00
	Laxmi Bank Limited	LBL	220.00
	Agriculture Development Bank Limited	ADBL	422.00
	Janata Bank Nepal Ltd.	JBNL	209.00
OVER PRICED	Standard Chartered Bank Limited	SCB	677.00
	Himalayan Bank Limited	HBL	583.00
	Everest Bank Limited	EBL	659.00
	Nepal SBI Bank Limited	SBI	473.00
	Nabil Bank Limited	NABIL	840.00

**Notes:** # Above pricing is performed by averaging the prices derived as per P/E, P/B and 180 days closing averages. Based on Published Q3 75/76 data.

# Harmonic Mean of industries is carried for Pricings.

### NEPSE TECHNICAL OUTLOOKS



Date / Time	13.02.2076
Close	1302.96
Open	1302.98
High	1309.90
Low	1298.36
Turnover	519,556,793
Bollinger Bands Top Bollinger Bands (20,2,ma,y)	1326.77
Bollinger Bands Median Bollinger Bands (20,2,ma,y)	1304.96
Bollinger Bands Bottom Bollinger Bands (20,2,ma,y)	1283.15
RSI (14)	59
MA (20, Volume, ma, 0)	815m
MACD (12,26,9)	20
Signal macd (12,26,9)	25
macd (12,26,9)_hist	-5

Indicators used: Bollinger Bands, MACD, RSI, Moving Average (20 days) Volume



Today's Outlook

*Disclaimers: This MARKET SUMM is prepared to timely update the market participants about the Nepalese stock market before the Market opens for the day. The information and data herein should not be construed as an investment advice or recommendation. Should the investors choose to act based on this report, it shall be entirely at their own risk and KCL Astute shall not be liable, for any loss or damages incurred thereby. Unless otherwise specifically stated, the above data concerns the previous trading day.*

**KCL Astute Capital Limited**

Address: Sundar Bhawan, Hattisar, Kathmandu

Contact No. 977-1-4429149 | 4429150,

Email: info@kclastute.com

**KCL ASTUTE CAPITAL RESEARCH TEAM**