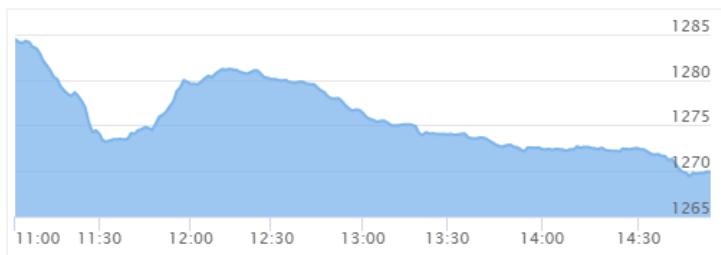




NEPSE Index -Thursday



MARKET SUMMARY

NEPSE	1,269.92	-1.10%
Total Turnover (Rs.)	550,532,146	+24.14%
Share Volume	2,198,126	+63.27%
Total Transactions	7,016	+8.57%
Total Market Cap. (Rs. Mill)	1,581,188.31	-1.10%
Floated Market Cap (Rs. Mill)	564,833.2	-1.12%

MARKET CAP TO GDP RATIO 52.57% ▼

WEIGHTAGE ON MARKET CAP

Commercial Banks	53.45%
Development Bank	5.15%
Finance	2.92%
Microfinance	6.09%
Life Insurance	7.31%
Non-life Insurance	5.58%
Hydropower	5.83%
Hotel	1.74%
Manufacturing And Processing	4.14%
Trading	0.09%
Others	7.71%
NTC	6.59%

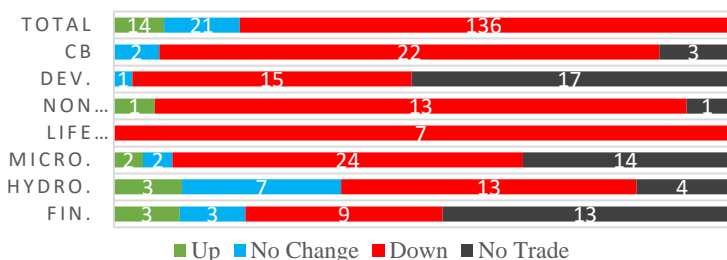
Top Gainers	NLO, SRS, GILB
Top Losers	UNHPL, NMFBS, BARUN
Top Stocks by Shares Traded	PRVU, NBL, NCCBPO
Top Stocks by Transactions	PRVU, UPPER, NBL
Top Stocks by Turnover	PRVU, ADBL, NBL
Top Brokers by Turnover	34, 58, 57

NEPSE STATISTICS

Average Return	16.80%
Standard Deviation	17.00%
Skewness	0.46
Kurtosis	3.49

Notes: NEPSE Index from 2069.04.01 – 2076.04.09. Avg. annual trade day's 229. Lognormal return is used. Skewness shows market is asymmetrically skewed to right, indicating average return of 16.80% more affected by outliers. Further excess kurtosis shows fat tail and more peaked distribution than normal.

TRADED SCRIPTS STATS



MAJOR MARKET NEWS

- NEPSE posted double digit fall of 14.15 points, closing the week at 1269.92 level.
- Sensitive Index dropped by 2.66 points
- Market reacted negatively to the Monetary Policy 2076/77, unveiled on Wednesday.
- UNHPL (85) hit negative circuit dropping by 9.57%.
- NIC Asia Capital Ltd. proposes to distribute 10% Cash dividend for the FY 2075/76.
- Allotment of 530,000 units IPO of Sabaiko Laghubitta Bittiya Sanstha Ltd. concluded at the Issue Manager premise, 49,525 applicant received 10 units via lottery.
- PRVU (280) Q4 75/76 Reports - Net Profit rose by 112.05% (y-o-y) to Rs.2.05 billion, EPS Rs.23.06, BVPS Rs.163.80
- ILBS (399) Q4 75/76 Reports - Net Profit rose by 231.62% (y-o-y) to Rs.3.86 crores, EPS Rs.18.09, BVPS Rs.120.56
- SMATA (1161) Q4 75/76 Reports - Net Profit rose by 249.32% (y-o-y) to Rs.2.57 crores, EPS Rs.42.32, BVPS Rs.238.87
- SFFIL (216) Q4 75/76 Reports - Net Profit rose by 29.87% (y-o-y) to Rs.15.73 crores, EPS Rs.34.14, BVPS Rs.156.39.
- NMBMF (1070) Q4 75/76 Reports - Net Profit rose by 86.46% (y-o-y) to Rs.6.09 crores, EPS Rs.37.64, BVPS Rs.188.46.
- ALBSL (402) Q4 75/76 Reports - Net Profit rose by 253.21% (y-o-y) to Rs.3.91 crores, EPS Rs.18.89, BVPS Rs.118.78.
- SDESI (602) Q4 75/76 Reports - Net Profit rose by 97.18% (y-o-y) to Rs.7.43 crores, EPS Rs.32.34, BVPS Rs.180.48.
- Price adjusted for 34.46% Bonus share of LICN.

Major Events (Today)

- **NFO Alert:** NIC ASIA Balance Fund worth Rs.1.25 billion (125 million units at Rs.10 each) open from today 8th Shrawan;
- **IPO Alert:** 7,672,210 units IPO Issue of Himal Dolakha Hydropower Company Ltd.

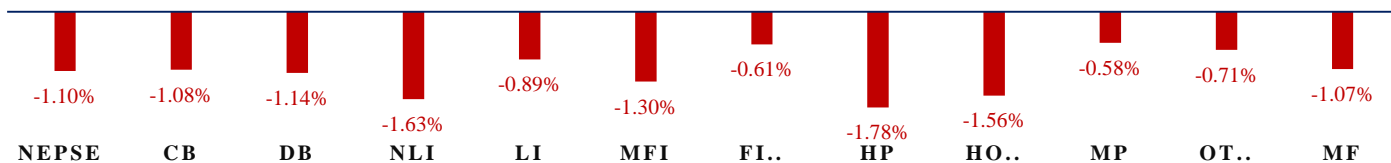
New Fund Offerings (Upcoming)

Schemes	Units	@ Rs.	Open
1 NMB 50	120 mil.	10	13/4/76
2 Siddhartha Investment Growth Scheme-2	140 mil.	10	23/4/76

Fundamental Watch: Quarter 4 2075/76 Unaudited Reports



INDICES % CHANGE



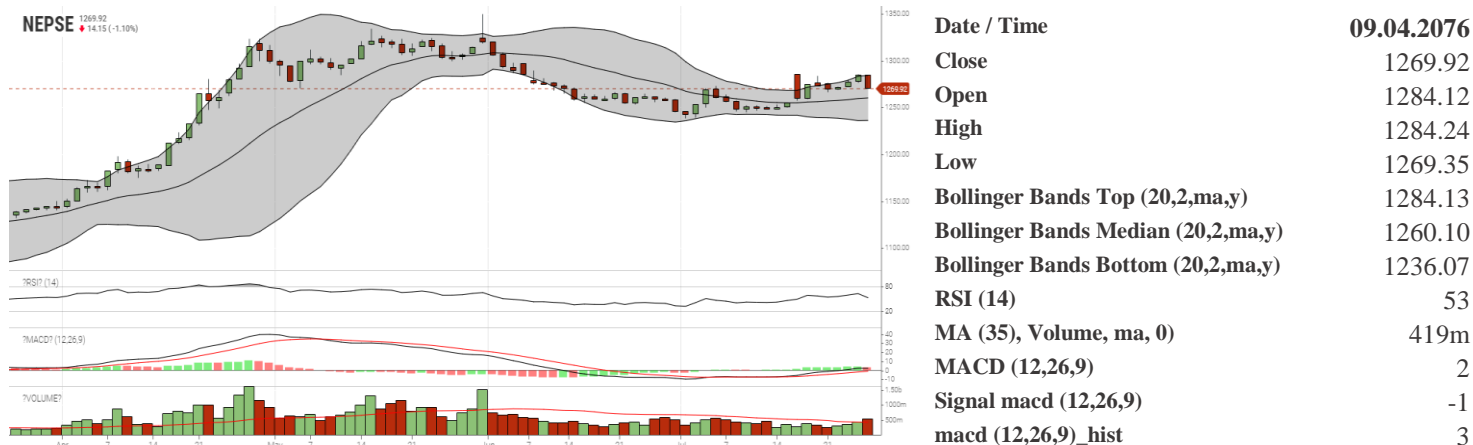
Volatile Stock			Stock Movement			Highest Avg. Volume Stocks in last 8 days		
SMFBS	(516)	7.49%	SRS	(227)	Highest till now	NBL	(344)	92,860.38 units
SLICL	(462)	6.49%	UPCL	(87)	Lowest till now	CBL	(158)	71,074.50 units
MHNL	(100)	6.00%	UNHPL	(85)	Lowest till now	PRVU	(280)	65,090.63 units

Sectorial Outlooks		Stock Pick...	
Bullish	Bearish	Up Pick	Down Pick
Development Bank	Hotels	PRVU	NLIC
Microfinance	Life Insurance	BPCL	OHL

Financial Metrics										
S.N.	Ticker	LTP	EPS	BVPS	P/E	P/B	ROE	NPL	CAR	Remarks
1	PRVU	280	24.18	163.80	11.58	1.71	15.11%	2.31%	11.58%	-
2	CZBIL	228	17.79	148.87	12.82	1.53	12.68%	1.19%	13.19%	To acquire SBBLJ
3	UFL	185	10.83	147.72	17.08	1.25	8.70%	0.65%	21.85%	-
4	NMFBS	1499	87.12	259.86	17.21	5.77	39.48%	1.43%	11.11%	-
5	SMATA	1161	42.32	238.87	27.43	4.86	25.21%	0.98%	10.17%	200% Right...

Note: If asterisk sign (*) financial metrics denotes Quarter 3 75/76 data, otherwise financial metrics are of Quarter 4 75/76 data.

NEPSE TECHNICAL OUTLOOKS



Indicators used: Bollinger Bands, MACD, RSI, Moving Average (35 days) Volume

Global Indices	SENSEX	NIFTY	S&P 500	DJIA	NIKKEI 225
	37,882.79 (+0.14%)	11,284.30 (+0.29%)	3,025.86 (+0.74%)	27,192.45 (+0.19%)	21658.15 (-0.44%)



Disclaimers: This MARKET SUMM is prepared to timely update the market participants about the Nepalese stock market before the Market opens for the day. The information and data herein should not be construed as an investment advice or recommendation. Should the investors choose to act based on this report, it shall be entirely at their own risk and KCL Astute shall not be liable, for any loss or damages incurred thereby. Unless otherwise specifically stated, the above data concerns the previous trading day.

KCL Astute Capital Limited

Address: Sundar Bhawan, Hattisar, Kathmandu

Contact No. 977-1-4429149 | 4429150,

Email: info@kclastute.com