



11th Bhadra, 2076 Wednesday

Market Summ... concerning previous day's trading Tuesday"

NEPSE Index – Tuesday



MARKET SUMMARY

| | | |
|------------------------------|--------------|---------|
| NEPSE | 1,208.40 | +0.44% |
| Total Turnover (Rs.) | 244,668,209 | -35.71% |
| Share Volume | 850,386 | -46.96% |
| Total Transactions | 5,282 | -19.24% |
| Total Market Cap. (Rs. Mill) | 1,534,181.07 | +0.42% |
| Floated Market Cap (Rs.Mill) | 551,472.12 | +0.45% |

MARKET CAP TO GDP RATIO **51.01%** ▲

WEIGHTAGE ON MARKET CAP

| | |
|------------------------------|--------|
| Commercial Banks | 52.70% |
| Development Bank | 5.27% |
| Finance | 2.94% |
| Microfinance | 6.44% |
| Life Insurance | 7.13% |
| Non-life Insurance | 5.34% |
| Hydropower | 6.64% |
| Hotel | 1.73% |
| Manufacturing And Processing | 4.08% |
| Trading | 0.11% |
| Others | 7.61% |
| NTC | 6.55% |

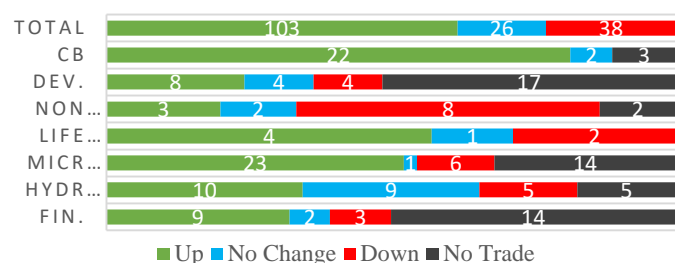
| | |
|-----------------------------|---------------------|
| Top Gainers | SABSL, AKBSL, PROFL |
| Top Losers | CEFL, AKPL, EDBL |
| Top Stocks by Shares Traded | NICA, NBL, PRVU |
| Top Stocks by Transactions | SJCL, RHPL, NICA |
| Top Stocks by Turnover | NICA, NBL, PRVU |
| Top Brokers by Transactions | 34, 4, 49 |

NEPSE STATISTICS

| | |
|--------------------|--------|
| Average Return | 15.88% |
| Standard Deviation | 16.91% |
| Skewness | 0.47 |
| Kurtosis | 3.55 |

Notes: NEPSE Index from 2069.04.01 – 2076.05.10. Avg. annual trade day's 229. Lognormal return is used. Skewness shows market is asymmetrically skewed to right, indicating average return of 15.88% more affected by outliers. Further excess kurtosis shows fat tail and more peaked distribution than normal.

TRADED SCRIPTS STATS



MAJOR MARKET NEWS

- 📌 Market turned green after red candle for 3 consecutive days. NEPSE reported a meagre gain of 4.87 points on Tuesday; and closed at 1208.40 level.
- 📌 Sensitive, Float and Sensitive Float Index all gained by 1.03, 0.38 and 0.34 points respectively.
- 📌 Most of the sub-indices closed green except Hotels and Non-Life Insurance which lost by 8.94 and 12.88 points respectively.
- 📌 SABSL and AKBSL hit positive circuit gaining 9.94% and 9.89% respectively.
- 📌 SAEF reported a NAV of Rs. 10.92 for the month of Shrawan, a decrease of 0.99% when compared with previous month.
- 📌 The 181st BOD meet of SMFDB has proposed 21.09% Bonus shares and 1.11% cash dividend (for tax purpose) for the FY 2075/76.
- 📌 The 308th BOD meet of CZBIL has proposed 3% Bonus shares and 12% cash dividend for the FY 2075/76.
- 📌 NEPSE has listed 10,992,321.62 units (25%) Bonus Share of NLIC.
- 📌 NEPSE has listed 222,750 units (40.5%) Bonus Share of UMB.
- 📌 NEPSE has listed 1,650,092.47 units (2%) Bonus Share of CCBL.

Today's Events

- 📌 **NFO Alert:** SIGS2 worth Rs.1.40 billion (140 million units at Rs.10 each). *Issue date Extended*
- 📌 **Auction Alert:** CBL is selling its 1,282,881 units promoter shares via auction. Issue open till 16th Bhadra
- 📌 **Auction Alert:** BFC is selling its 557,674.57 units promoter shares and 244,549.90 units ordinary shares via auction. Issue open till 25th Bhadra
- 📌 **Auction Alert:** JSLBB is selling its 18,503 units ordinary shares via auction. Issue open till 17th Bhadra
- 📌 **Right Shares Alert:** SLICL is issuing 70% right shares to its shareholders. Issue open till 12th Ashwin.
- 📌 **Debentures Alert:** SBL is issuing 10.25% 25 lakh units debentures. Issue open till 19th Bhadra.
- 📌 **Right Shares Alert:** GILB is issuing 100% right shares to its shareholders. Issue open till 23rd Bhadra.
- 📌 **Right Shares Alert:** WOMI is issuing 100% right shares to its shareholders. *Last day*
- 📌 **Right Shares Alert:** UIC is issuing 240% right shares to its shareholders from today. Issue open till 6th Ashwin.

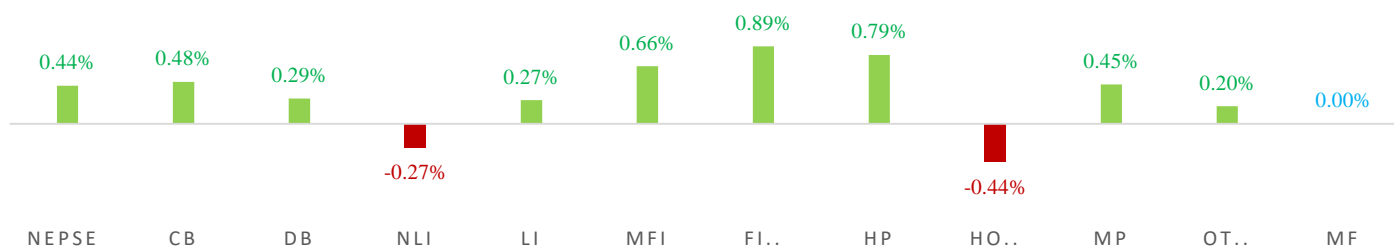


MARKET SUMM...



11th Bhadra, 2076 Wednesday

INDICES % CHANGE



Volatile Stocks

| | | |
|-------|-------|-------|
| DHPL | (61) | 8.62% |
| PROFL | (105) | 8.16% |
| SABSL | (365) | 7.99% |

Stock Movement

| | | |
|-------|-------|------------------|
| AKBSL | (300) | Highest till now |
| HPPL | (148) | Lowest till now |
| NGPL | (115) | Lowest till now |

Highest Volume – Day 3 (Week 7)

| | | |
|--------|-------|-----------------|
| PRVUPO | (165) | 1,240,288 units |
| NBL | (324) | 151,953 units |
| RHPL | (191) | 118,296 units |

Sectorial Outlooks

| Bullish | Bearish |
|---------|--------------------|
| - | Finance |
| - | Non-Life Insurance |

Stock Pick...

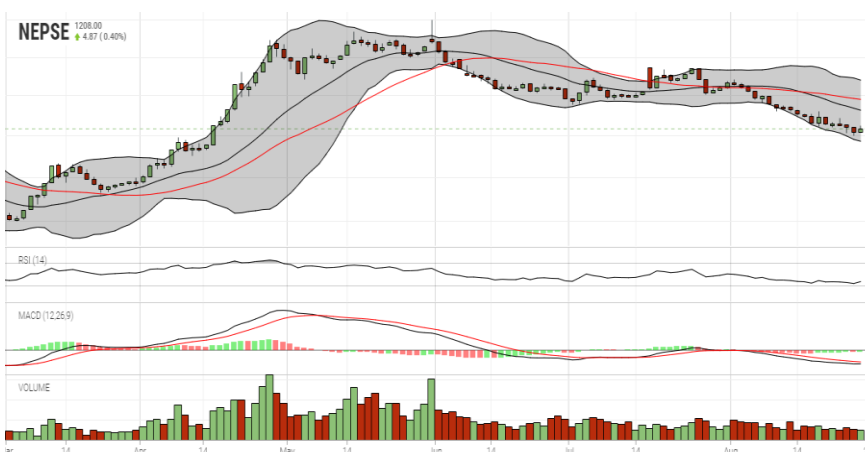
| Up Pick | Down Pick |
|---------|-----------|
| SMATA | PPCL |
| SINDU | NICL |

Financial Metrics

| S.N. | Ticker | LTP | EPS | BVPS | P/E | P/B | ROE | NPL | CAR | Remarks |
|------|--------|-----|-------|--------|-------|------|--------|--------|--------|---------|
| 1 | SICL | 765 | 44.73 | 250.17 | 17.10 | 3.06 | 19.64% | - | - | - |
| 1 | SIC | 574 | 27.62 | 191.17 | 20.78 | 3.00 | 15.57% | - | - | - |
| 2 | JSLBB | 970 | 73.73 | 327.01 | 13.16 | 2.97 | 26.99% | 2.23% | 8.37% | - |
| 3 | NIL | 400 | 29.22 | 195.90 | 13.69 | 2.04 | 16.12% | - | - | - |
| 5 | BFC | 96 | 9.92 | 87.53 | 9.68 | 1.10 | 17.56% | 18.46% | 17.17% | - |

Note: If asterisk sign (*) financial metrics denotes Quarter 3 75/76 data, otherwise financial metrics are of Quarter 4 75/76 data.

NEPSE TECHNICAL OUTLOOKS



| | |
|------------------------------------|------------|
| Date / Time | 10.05.2076 |
| Close | 1208.40 |
| Open | 1203.42 |
| High | 1212.31 |
| Low | 1203.40 |
| Bollinger Bands Top (20,2,ma,y) | 1269.55 |
| Bollinger Bands Median (20,2,ma,y) | 1231.19 |
| Bollinger Bands Bottom (20,2,ma,y) | 1192.83 |
| RSI (14) | 31 |
| MA (35, Price, ma, 0) | 1244.89 |
| MACD (12,26,9) | -14 |
| Signal macd (12,26,9) | -12 |
| macd (12,26,9)_hist | -2 |

Indicators used: Bollinger Bands, MACD, RSI, Moving Average (35 days) Volume

| Global Indices | SENSEX | NIFTY | S&P 500 | DJIA | NIKKEI 225 |
|----------------|--------------------|--------------------|-------------------|--------------------|--------------------|
| | 37,641.27 (+0.39%) | 11,105.35 (+0.43%) | 2,878.38 (+1.10%) | 25,898.83 (+1.05%) | 20,456.08 (+0.96%) |



Disclaimers: This MARKET SUMM is prepared to timely update the market participants about the Nepalese stock market before the Market opens for the day. The information and data herein should not be construed as an investment advice or recommendation. Should the investors choose to act based on this report, it shall be entirely at their own risk and KCL Astute shall not be liable, for any loss or damages incurred thereby. Unless otherwise specifically stated, the above data concerns the previous trading day.

KCL Astute Capital Limited

Address: Sundar Bhawan, Hattisar, Kathmandu

Contact No. 977-1-4429149 | 4429150

Email: info@kclastute.com

KCL ASTUTE CAPITAL RESEARCH TEAM