



MARKET SUMMARY		
NEPSE	1,162.09	-0.91%
Total Turnover (Rs.)	340,371,127	7.90%
Share Volume	1,185,872	19.43%
Total Transactions	6,730	10.31%
Total Market Cap. (Rs. Mill)	1,417,774.04	-0.91%
Floated Market Cap (Rs. Mill)	495,115.87	-0.92%

MARKET CAP TO GDP RATIO	47.14% ▼
-------------------------	----------

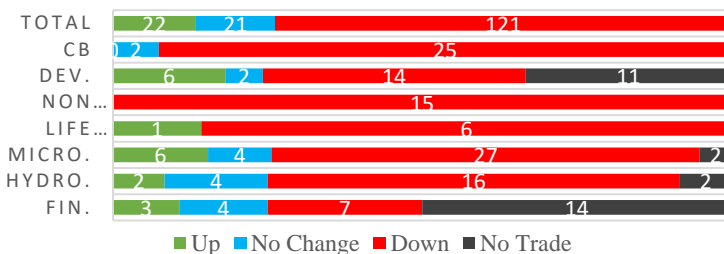
WEIGHTAGE ON MARKET CAP	
Commercial Banks	51.13%
Development Bank	5.15%
Finance	3.44%
Microfinance	6.29%
Life Insurance	8.18%
Non-life Insurance	6.64%
Hydropower	6.03%
Hotel	1.61%
Manufacturing And Processing	2.60%
Trading	0.10%
Others	8.83%
NTC	7.71%

Top Gainers	SMATA, KNBL, GRDBL
Top Losers	CHL, JBNLPO, BARUN
Top Stocks by Shares Traded	JBNLPO, UPPER, NBL
Top Stocks by Transactions	UPPER, LBL, NIB
Top Stocks by Turnover	UPPER, NBL, JBNLPO
Top Brokers by Turnover	17, 28, 58

NEPSE STATISTICS	
Average Return	16.85%
Standard Deviation	17.37%
Standard Error	1.15%
Skewness	0.45
Kurtosis	3.38

Notes: NEPSE Index from 2069.04.01 –2075.10.13. Avg. annual trade day's 229. Lognormal return is used. Skewness shows market is asymmetrically skewed to right, indicating average return of 16.85% more affected by outliers. Further excess kurtosis shows fat tail and more peaked distribution than normal.

TRADED SCRIPTS STATS



MARKET OVERVIEW

Market experienced 10.68 point fall on Sunday, closing at 1,162.09. However, good market participation was seen with a Turnover exceeding Rs.34 crores from the significant increment of Shares Volumes. 164 company scripts transacted for 6,730 times on the day. Sensitive, Float and Sensitive Float index posted loss of 2.06, 0.79 and 0.67 points respectively.

All the sub-indices closed Red on the day. Most losing sectors were Non-life insurance (93.75 points), Life insurance (69.93 points) and Manu. & Pro. (21.64 points). Banking lost 8.39 points and Microfinance lost 12.69 points.

RLFL, CIT underperformed the most as compared to its sector performance while SMATA, GRDBL, KPCL performed relatively well. UPPER, SMATA, PMHPL were the most volatile stocks. JBNLPO, PMHPL traded at all-time low today while SLBSL made all time high. NABIL, NEF, HBL are trading closer to 52 weeks low while JEFL, PCBLP, LBBL are trading near 52 weeks high.

SEBON issued a Press Statements on Sunday to clarify the ongoing rumours regarding the requirements of PAN for shares transactions. Expressing its concerns over negative rumours that created a common fear among the investors, SEBON has clarified that the implementation of PAN system will be made only after ensuring that the markets has adequate infrastructure and sufficient investors awareness. The effect of rumours was reflected by Sunday's fall.

MAJOR MARKET NEWS

- 📌 SBI Q2 Report – Net profit rose by 12.02% to Rs.1.02 billion; EPS Rs.24.21, BVPS Rs.152.93.
- 📌 SDESI Q2 Report – Net profit rose by 93.96% to Rs.2.64 crores; EPS Rs.27.93, BVPS Rs.160.83.
- 📌 SHINE Q2 Report – Net profit rose by 31.43% to Rs.19.9 crores; EPS Rs.24.53, BVPS Rs.132.69.
- 📌 PURBL Q2 Report – Net profit fell by 0.75% to Rs.3.62 crores; EPS Rs.13.13, BVPS Rs.119.70.
- 📌 MERO Q2 Report – Net profit rose by 79.07% to Rs.6.18 crores; EPS Rs.37.62, BVPS Rs.142.15.
- 📌 SMATA Q2 Report – Net profit rose by 180.25% to Rs.72.17 lakh; EPS Rs.25.38, BVPS Rs.166.47
- 📌 PROFL Q2 Report – Net profit of Rs.2.45 crores; EPS Rs.7.59. BVPS Rs.105.85.



- ☑ NIBSF1 Poush end NAV increased to Rs.10.10; Net Profit of Rs 15.85 lakh in Poush.
- ☑ NIBLPF Poush end NAV increased to Rs.7.67; Net Loss of Rs 1.05 crores in Poush.
- ☑ SEF Poush end NAV increased to Rs.10.75; reported Net Profit of Rs 8.45 crores in Poush.
- ☑ SEOS Poush end NAV increased to Rs.10.61; reported Net Profit of Rs 2.68 crores in Poush.
- ☑ GIMES1 Poush end NAV increased to Rs.8.77; reported Net Loss of Rs 18.61 crores in Poush.

Major Events (Today)

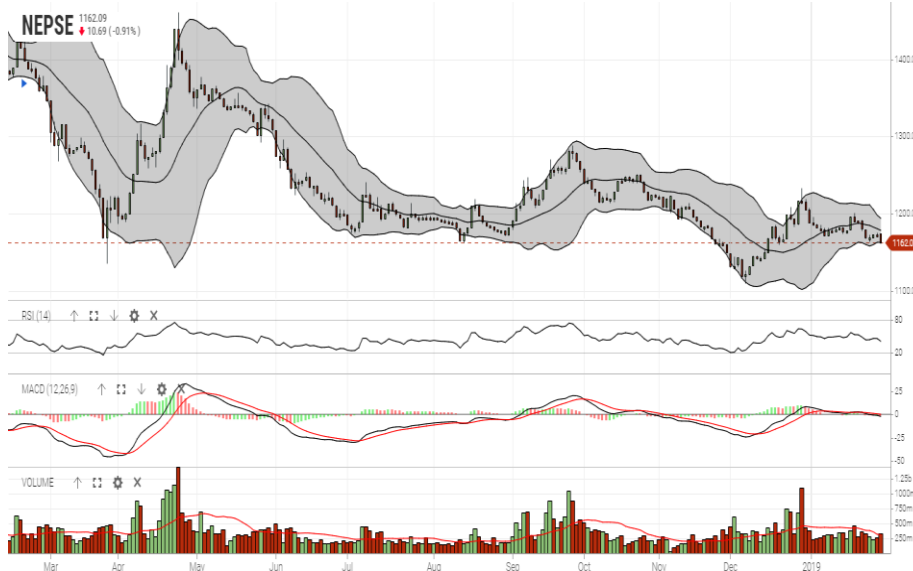
- ☑ Book closure date for 18th AGM of LBL.

GLOBAL INDICES		
SENSEX	36,025.54	-169.56
NIFTY	10,780.55	-69.25
S&P 500	2,664.76	+22.43
DJIA	24,737.20	+183.96
NIKKEI 225	20,773.56	+198.93

	Scrip Name	Ticker	LTP
UNDER PRICED	Nepal Credit And Commercial Bank	NCCB	211.00
	Nepal Bank Ltd.	NBL	289.00
	Bank of Kathmandu Ltd.	BOKL	252.00
	Mega Bank Nepal Ltd.	MEGA	165.00
	Janata Bank Nepal Ltd.	JBNL	166.00
FAIRLY PRICED	Civil Bank Ltd	CBL	160.00
	Laxmi Bank Limited	LBL	220.00
	Nepal Investment Bank Limited	NIB	532.00
	Machhapuchhre Bank Limited	MBL	209.00
OVER PRICED	NMB Bank Limited	NMB	316.00
	Nabil Bank Limited	NABIL	838.00
	Standard Chartered Bank Limited	SCB	565.00
	Everest Bank Limited	EBL	522.00
	Prime Commercial Bank Ltd.	PCBL	325.00
	NIC Asia Bank Ltd.	NICA	391.00

Notes:# Above pricing is performed by averaging the prices derived as per P/E, P/B and 180 days closing averages. Harmonic Mean of industries is carried for Pricings.

NEPSE TECHNICAL OUTLOOKS



Date / Time	13.10.2075
Close	1,162.09
Open	1,173.21
High	1,173.21
Low	1,160.76
Turnover	340,371,127
Bollinger Bands Top Bollinger Bands (20,2,ma,y)	1,193.92
Bollinger Bands Median Bollinger Bands (20,2,ma,y)	1,178.31
Bollinger Bands Bottom Bollinger Bands (20,2,ma,y)	1,162.71
RSI (14)	41
MA (20, Volume, ma, 0)	313m
MACD (12,26,9)	-2
Signal macd (12,26,9)	0
macd (12,26,9)_hist	-2

Indicators used: Bollinger Bands, MACD, RSI, Moving Average (20 days) Volume

Disclaimers: This MARKET SUMM is prepared to timely update the market participants about the Nepalese stock market before the Market opens for the day. The information and data herein should not be construed as an investment advice or recommendation. Should the investors choose to act based on this report, it shall be entirely at their own risk and KCL Astute shall not be liable, for any loss or damages incurred thereby. Unless otherwise specifically stated, the above data concerns the previous trading day.



KCL Astute Capital Limited

Address: SundarBhawan, Hattisar, Kathmandu

Contact No. 977-1-4429149 | 4429150, Email: info@kclastute.com