



NEPSE Index -Sunday



MARKET SUMMARY

NEPSE	1,252.80	-1.35%
Total Turnover (Rs.)	492,673,652	-10.51%
Share Volume	1,937,041	-11.88%
Total Transactions	6,698	-4.53%
Total Market Cap. (Rs. Mill)	1,559,878.46	-1.35%
Floated Market Cap (Rs. Mill)	556,908.46	-1.40%

MARKET CAP TO GDP RATIO 51.86% ▼

WEIGHTAGE ON MARKET CAP

Commercial Banks	53.43%
Development Bank	5.17%
Finance	2.92%
Microfinance	6.06%
Life Insurance	7.27%
Non-life Insurance	5.55%
Hydropower	5.85%
Hotel	1.75%
Manufacturing And Processing	4.15%
Trading	0.09%
Others	7.75%
NTC	6.64%

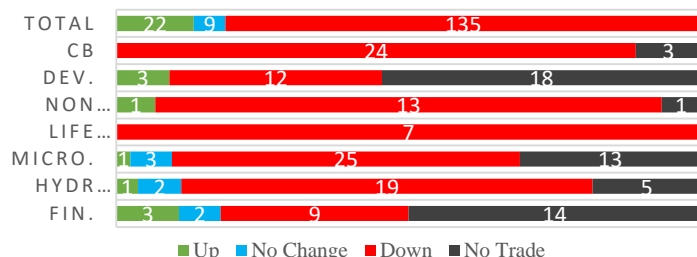
Top Gainers	SFFIL, UPCL, NMBSF1
Top Losers	UNHPL, UIC, PPCL
Top Stocks by Shares Traded	NBL, ADBL, CBL
Top Stocks by Transactions	ILBS, UPPER, NBL
Top Stocks by Turnover	ADBL, NBL, CBBL
Top Brokers by Turnover	49, 44, 34

NEPSE STATISTICS

Average Return	16.60%
Standard Deviation	17.00%
Skewness	0.46
Kurtosis	3.49

Notes: NEPSE Index from 2069.04.01 – 2076.04.12. Avg. annual trade day's 229. Lognormal return is used. Skewness shows market is asymmetrically skewed to right, indicating average return of 16.60% more affected by outliers. Further excess kurtosis shows fat tail and more peaked distribution than normal.

TRADED SCRIPTS STATS



MAJOR MARKET NEWS

- NEPSE posted double digit fall of 17.11 points, opening the week's trade at 1252.80 level.
- Sensitive Index dropped by 3.43 points
- Market continues its negative reaction to the Monetary Policy 2076/77, which was unveiled on Wednesday.
- SFFIL (237) hit positive circuit gaining by 9.72%.
- UNHPL (78) hit negative circuit dropping by 8.24%.
- 15,00,000 units of 10.25% Global IME Bank Ltd Debenture 2080/81 has been listed.
- Dividend announcement of NMBHF1 (9.90) -10% cash dividend for the FY 2075/76.
- Dividend announcement of NMBSF1 (11.26) -15% cash dividend for the FY 2075/76.
- NMB to conduct SGM on 28th Shrawan, 2076 for the purpose of finalizing the merger with ODBL.
- NIL (472) dividend announcement for FY 2075/76-12% bonus shares. Book Closure Date is set on 3rd Bhadra, 2076.
- MNBBL (371) is issuing 20% right shares to its shareholders. Book Closure Date is set on 30th Shrawan 2076.
- SPARS (458) Q4 75/76 Reports - Net Profit rose by 153.33 times (y-o-y) to Rs.1.56 crores, EPS Rs.18.82, BVPS Rs.119.08
- NAGRO (540) Q4 75/76 Reports - Net Profit rose by 605.96% (y-o-y) to Rs.1.58 crores, EPS Rs.37.86, BVPS Rs.134.87.
- SANIMA (351) Q4 75/76 Reports - Net Profit rose by 32.16% (y-o-y) to Rs.2.24 arba, EPS Rs.28.04, BVPS Rs.148.73.
- Sabaiko Laghubitta concludes its IPO allotment. The issue was oversubscribed by more than 11.25 times.

Major Events (Today)

- NFO Alert:** NMB 50 worth Rs.1.20 billion (120 million units at Rs.10 each) open from today 13th Shrawan;
- NFO Alert:** NIC ASIA Balance Fund worth Rs.1.25 billion (125 million units at Rs.10 each); issue date extended till Bhadra 5th owing to under-subscription.
- IPO Alert:** 7,672,210 units IPO Issue of Himal Dolakha Hydropower Company Ltd.

New Fund Offerings (Upcoming)

Schemes	Units	@ Rs.	Open
1 Siddhartha Investment Growth Scheme-2	140 mil.	10	23/4/76

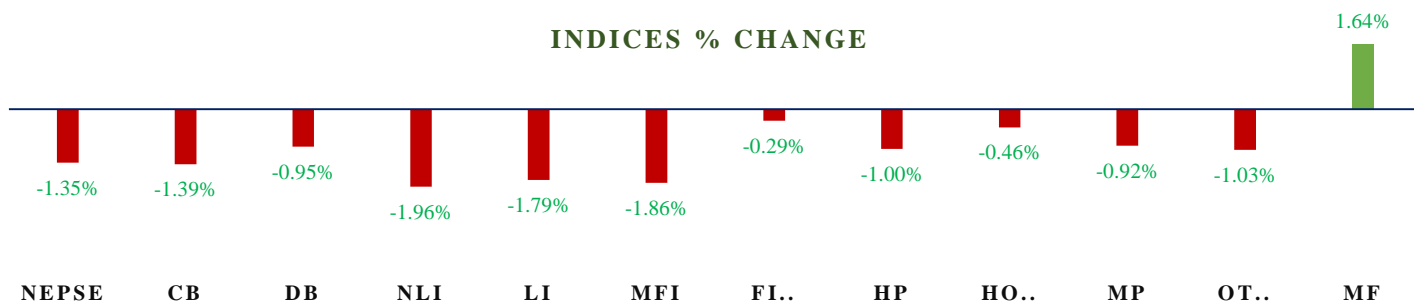
Fundamental Watch: Quarter 4 2075/76 Unaudited Reports



MARKET SUMM...

13th Asadh, 2076 Monday

INDICES % CHANGE



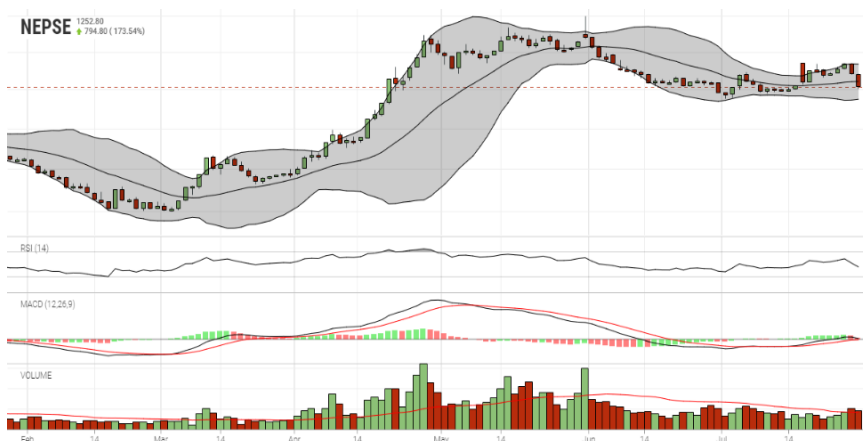
Volatile Stock			Stock Movement			Highest Volume – Day 1 (Week 3)		
UNHPL	(78)	9.09%	NLO	(218)	Highest till now	NBL	(339)	118,728 units
GMFBS	(521)	8.44%	BBC	(1489)	Lowest till now	ADBL	(425)	96,129 units
UIC	(798)	7.54%	UNHPL	(78)	Lowest till now	CBL	(155)	84,840 units

Sectorial Outlooks		Stock Pick...	
Bullish	Bearish	Up Pick	Down Pick
Life Insurance	Hotels	UIC	SHL
Non-Life Insurance	Mutual Funds	KBL	UPPER

Financial Metrics										
S.N.	Ticker	LTP	EPS	BVPS	P/E	P/B	ROE	NPL	CAR	Remarks
1	PRVU	276	24.18	163.80	11.41	1.68	15.11%	2.31%	11.58%	-
2	CZBIL	226	17.79	148.87	12.70	1.52	12.68%	1.19%	13.19%	To acquire SBBLJ
3	UFL	182	10.83	147.72	16.81	1.23	8.70%	0.65%	21.85%	-
4	NMFBS	1478	87.12	259.86	16.97	5.69	39.48%	1.43%	11.11%	-
5	SMATA	1137	42.32	238.87	26.87	4.76	25.21%	0.98%	10.17%	200% Right...

Note: If asterisk sign (*) financial metrics denotes Quarter 3 75/76 data, otherwise financial metrics are of Quarter 4 75/76 data.

NEPSE TECHNICAL OUTLOOKS



Date / Time	12.04.2076
Close	1252.80
Open	1269.91
High	1270.46
Low	1250.18
Bollinger Bands Top (20,2,ma,y)	1283.76
Bollinger Bands Median (20,2,ma,y)	1260.50
Bollinger Bands Bottom (20,2,ma,y)	1237.23
RSI (14)	43
MA (35), Volume, ma, 0	415m
MACD (12,26,9)	1
Signal macd (12,26,9)	-1
macd (12,26,9)_hist	1

Indicators used: Bollinger Bands, MACD, RSI, Moving Average (35 days) Volume

Global Indices	SENSEX	NIFTY	S&P 500	DJIA	NIKKEI 225
	37,882.79 (+0.14%)	11,284.30 (+0.29%)	3,025.86 (+0.74%)	27,192.45 (+0.19%)	21,658.15 (-0.45%)



Disclaimers: This MARKET SUMM is prepared to timely update the market participants about the Nepalese stock market before the Market opens for the day. The information and data herein should not be construed as an investment advice or recommendation. Should the investors choose to act based on this report, it shall be entirely at their own risk and KCL Astute shall not be liable, for any loss or damages incurred thereby. Unless otherwise specifically stated, the above data concerns the previous trading day.

KCL Astute Capital Limited

Address: Sundar Bhawan, Hattisar, Kathmandu

Contact No. 977-1-4429149 | 4429150,

Email: info@kclastute.com