



15<sup>th</sup> Bhadra, 2076 Sunday

Market Summ... concerning previous day's trading Thursday"

## NEPSE Index – Thursday



## MARKET SUMMARY

NEPSE	1,196.41	-0.11%
Total Turnover (Rs.)	277,359,659	-25.43%
Share Volume	975,834	-26.06%
Total Transactions	5,677	3.78%
Total Market Cap. (Rs. Mill)	1,519,459.38	-0.11%
Floated Market Cap (Rs. Mill)	546,197.59	-0.08%

MARKET CAP TO GDP RATIO **50.52%** ▼

## WEIGHTAGE ON MARKET CAP

Commercial Banks	52.78%
Development Bank	5.31%
Finance	2.93%
Microfinance	6.48%
Life Insurance	7.06%
Non-life Insurance	5.33%
Hydropower	6.59%
Hotel	1.74%
Manufacturing And Processing	4.05%
Trading	0.11%
Others	7.62%
NTC	6.58%

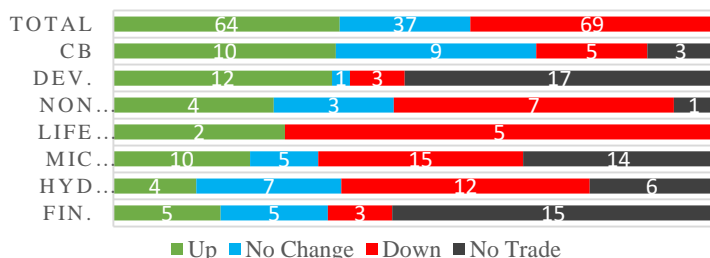
Top Gainers	SABSL, NLG, UNHPL
Top Losers	UFL, KRBL, MLBBL
Top Stocks by Shares Traded	KBL, MEGAPO, PRVU
Top Stocks by Transactions	SJCL, RHPL, KBL
Top Stocks by Turnover	KBL, NLIC, NICA
Top Brokers by Transactions	34, 49, 45

## NEPSE STATISTICS

Average Return	15.72%
Standard Deviation	16.90%
Skewness	0.47
Kurtosis	3.55

Notes: NEPSE Index from 2069.04.01 – 2076.05.12. Avg. annual trade day's 229. Lognormal return is used. Skewness shows market is asymmetrically skewed to right, indicating average return of 15.72% more affected by outliers. Further excess kurtosis shows fat tail and more peaked distribution than normal.

## TRADED SCRIPTS STATS



## MAJOR MARKET NEWS

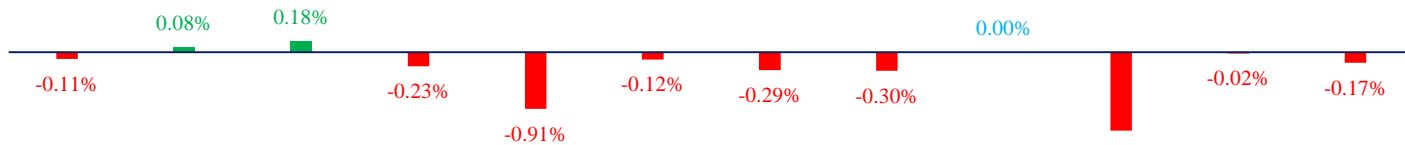
- Market closed the weekend trade with the loss of 1.33 points on Thursday; NEPSE Index stood 1196.41 level.
- Sensitive, Float and Sensitive Float Index all fell by 0.16, 0.07 and 0.04 points respectively.
- Except Banking and Development Bank, remaining Sub-Indices closed Red on the day.
- NCDB Q4 75/76 reported 21% Net Profit growth to Rs.5.22 crores; EPS Rs.9.83, BVPS Rs.114.50.
- CHL Q4 75/76 reported 99.27% Net Profit growth to Rs.1.39 crores; EPS Rs.2.57, BVPS Rs.105.16.
- MBL proposed 5% Bonus and 11% Cash dividend for the FY 2075/76.
- SEBON approved 200% Rights proposal of SMATA.
- NMB Sulav Investment Fund-1 (NMBSF-1) Shrawan NAV decreased to Rs.10.51;
- NMB Hybrid Fund L-1 (NMBHF-1) Shrawan NAV decreased to Rs.10.04;
- Global IME Samunnat Scheme-1 (GIMES1) Shrawan NAV decreased to Rs.8.76;
- NIBL Samriddhi Fund-1 (NIBSF1) Shrawan NAV decreased to Rs.10.56;
- NIBL Pragati Fund (NIBLPF) Shrawan NAV decreased to Rs.8.21;
- NIBL Sahabagita Fund (open ended) Shrawan NAV decreased to Rs.9.95;
- Laxmi Value Fund-1 (LVF1) Shrawan NAV decreased to Rs.9.94;
- Laxmi Equity Fund (LEMF) Shrawan NAV decreased to Rs.8.92;
- Nabil Equity Fund (NEF) Shrawan NAV decreased to Rs.9.01;
- Nabil Balance Fund II (NBF2) Shrawan NAV decreased to Rs.10;
- NEPSE has listed 32,75,000 units (50%) Rights of GBLBS.
- NEPSE has listed 1,43,800.41 Units (9.38%) Bonus Shares of NBBL.

## Today's Events (Sunday)

- Debentures Alert:** SBL is issuing 10.25% 25 lakh units debentures. Issue open till 19<sup>th</sup> Bhadra.
- Right Shares Alert:** MNBBL is issuing 20% Right
- Right Shares Alert:** SLICL is issuing 70% Right
- Right Shares Alert:** GILB is issuing 100% Right
- Right Shares Alert:** UIC is issuing 240% Right
- Auction Alert:** CBL is selling its 1,282,881 units promoter shares via auction.
- Auction Alert:** BFC is selling its 557,674.57 units promoter shares and 244,549.90 units ordinary shares via auction.



### INDICES % CHANGE



NEPSE    CB    DB    NLI    LI    MFI    FI..    HP    HO..    MP    OT..    MF

#### Volatile Stocks

UFL	(175)	7.95%
SABSL	(441)	7.82%
GFCL	(138)	5.88%

#### Stock Movement

AKBSL	(318)	Highest till now
SPDL	(78)	Lowest till now
RHPL	(185)	Lowest till now

#### Highest Volume – Day 5 (Week 7)

PRVUPO	(165)	1,240,288 units
KBL	(203)	488,188 units
NICA	(439)	237,141 units

#### Sectorial Outlooks

##### Bullish

-  
-

##### Bearish

Banking  
Non-Life Insurance

#### Stock Pick...

##### Up Pick

EDBL  
SINDU

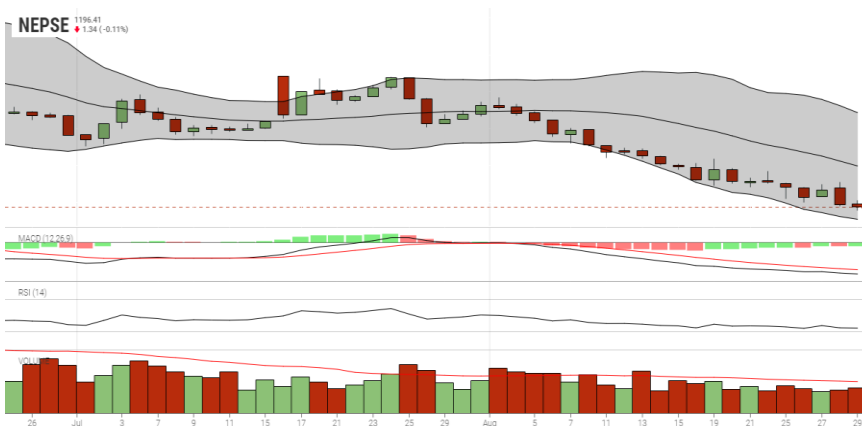
##### Down Pick

UFL  
NICL

#### Financial Metrics

S.N.	Ticker	LTP	EPS	BVPS	P/E	P/B	ROE	NPL	CAR	Remarks
1	SICL	755	44.73	250.17	16.88	3.02	19.64%	-	-	-
1	SIC	560	27.62	191.17	20.28	2.93	15.57%	-	-	-
2	JSLBB	945	73.73	327.01	12.82	2.89	26.99%	2.23%	8.37%	-
3	NIL	386	29.22	195.90	13.21	1.97	16.12%	-	-	-
5	BFC	95	9.92	87.53	9.58	1.09	17.56%	18.46%	17.17%	-

#### NEPSE TECHNICAL OUTLOOKS



Date / Time	12.05.2076
Close	1196.41
Open	1198.63
High	1201.23
Low	1194.09
Bollinger Bands Top (20,2,ma,y)	1260.55
Bollinger Bands Median (20,2,ma,y)	1224.43
Bollinger Bands Bottom (20,2,ma,y)	1188.31
RSI (14)	26
MA (35, Price, ma, 0)	342m
MACD (12,26,9)	-15
Signal macd (12,26,9)	-13
macd (12,26,9)_hist	-2

Indicators used: Bollinger Bands, MACD, RSI, Moving Average (35 days) Volume

Global Indices	SENSEX	NIFTY	S&P 500	DJIA	NIKKEI 225
	37,332.79 (+0.71%)	11,023.25 (+0.68%)	2,926.46 (+0.06%)	25,403.28 (+0.16%)	20,704.37 (+1.19%)



*Disclaimers: This MARKET SUMM is prepared to timely update the market participants about the Nepalese stock market before the Market opens for the day. The information and data herein should not be construed as an investment advice or recommendation. Should the investors choose to act based on this report, it shall be entirely at their own risk and KCL Astute shall not be liable, for any loss or damages incurred thereby. Unless otherwise specifically stated, the above data concerns the previous trading day.*

#### KCL Astute Capital Limited

Address: Sundar Bhawan, Hattisar, Kathmandu

Contact No. 977-1-4429149 | 4429150

Email: [info@kclastute.com](mailto:info@kclastute.com)